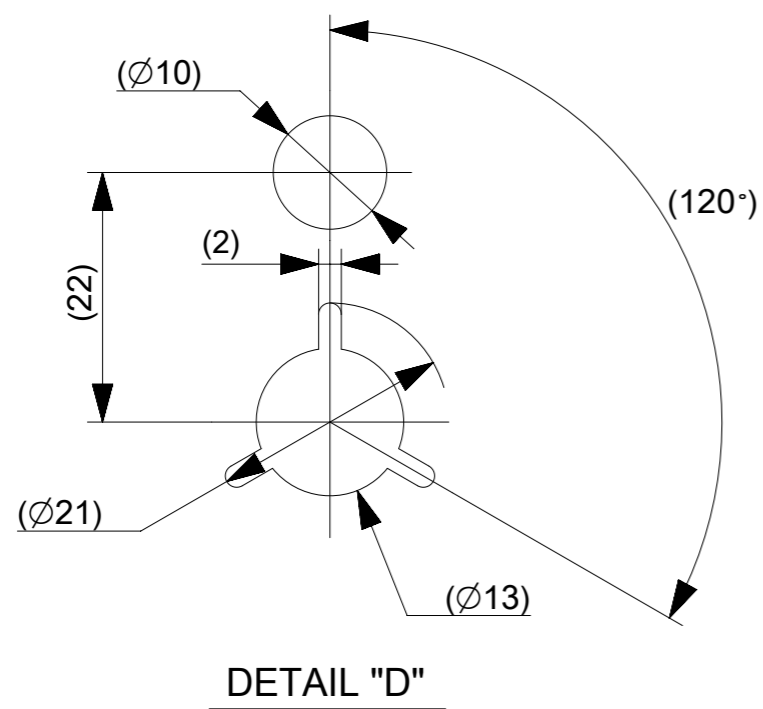
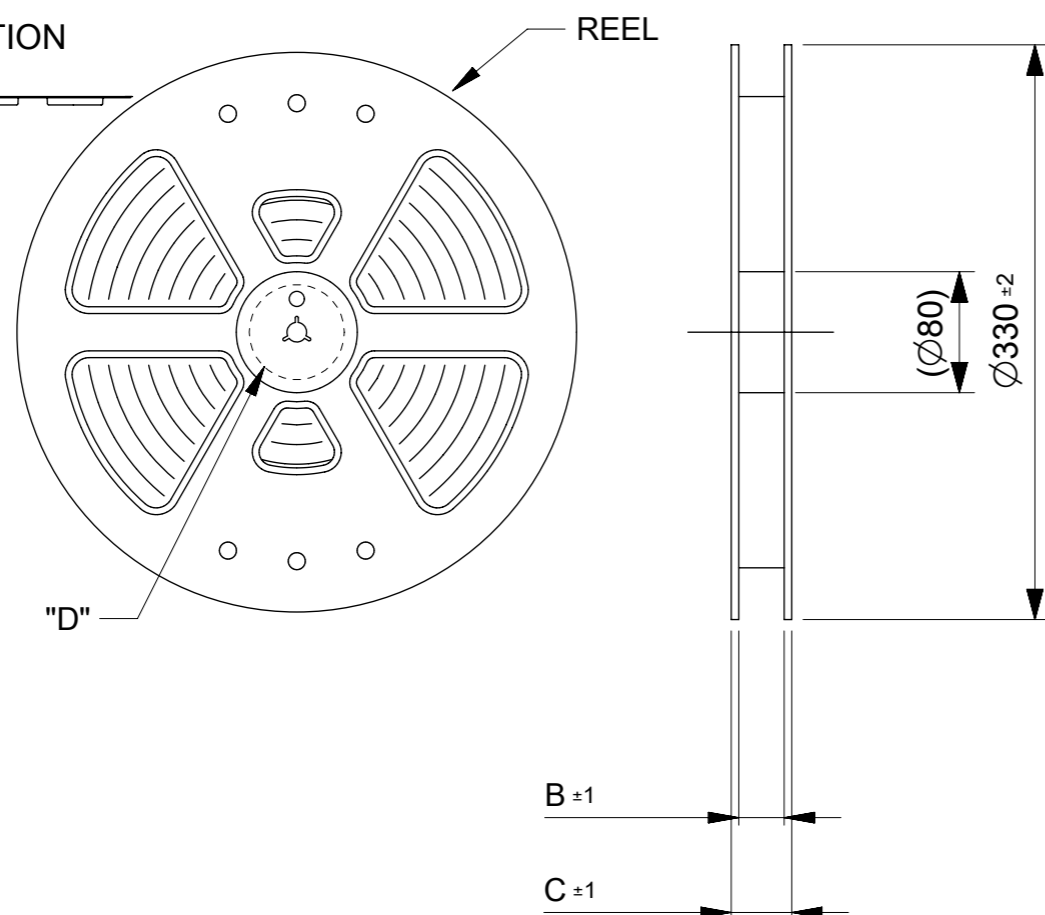
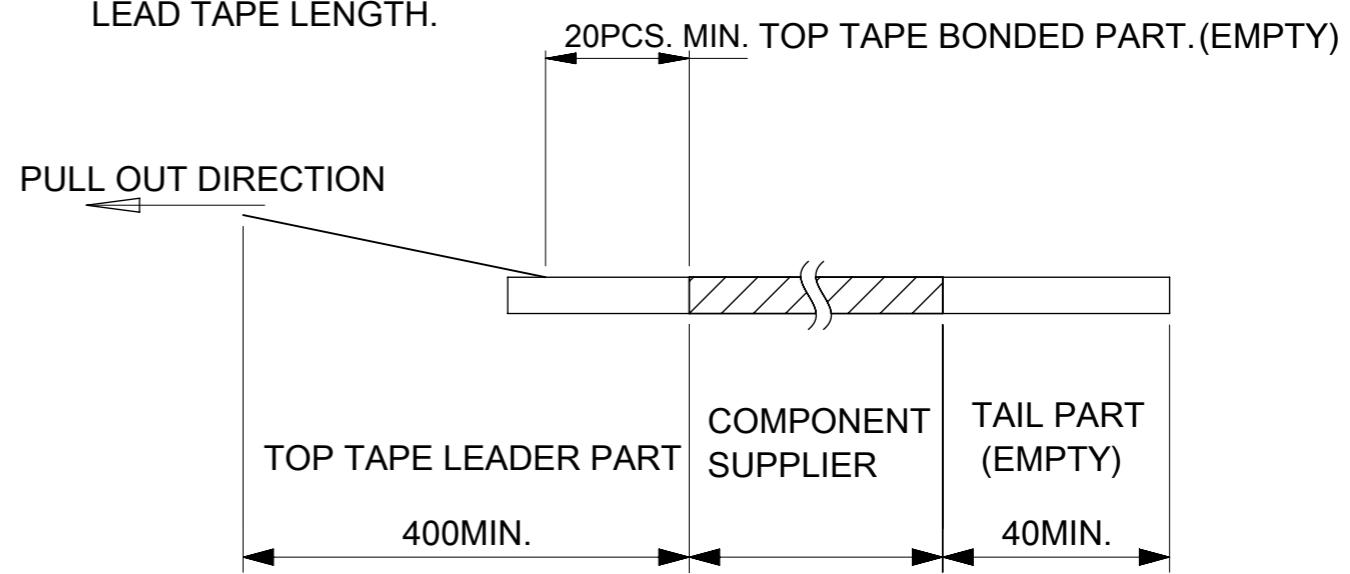


PULL OUT DIRECTION



NOTES

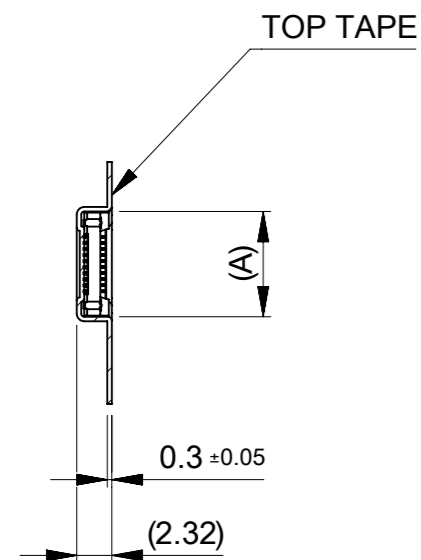
1. RE DETAILED DIMENSION, SEE PRODUCT DRAWING.
2. NUMBER OF CONNECTORS : 3000 PCS/REEL.
3. LEAD TAPE LENGTH.



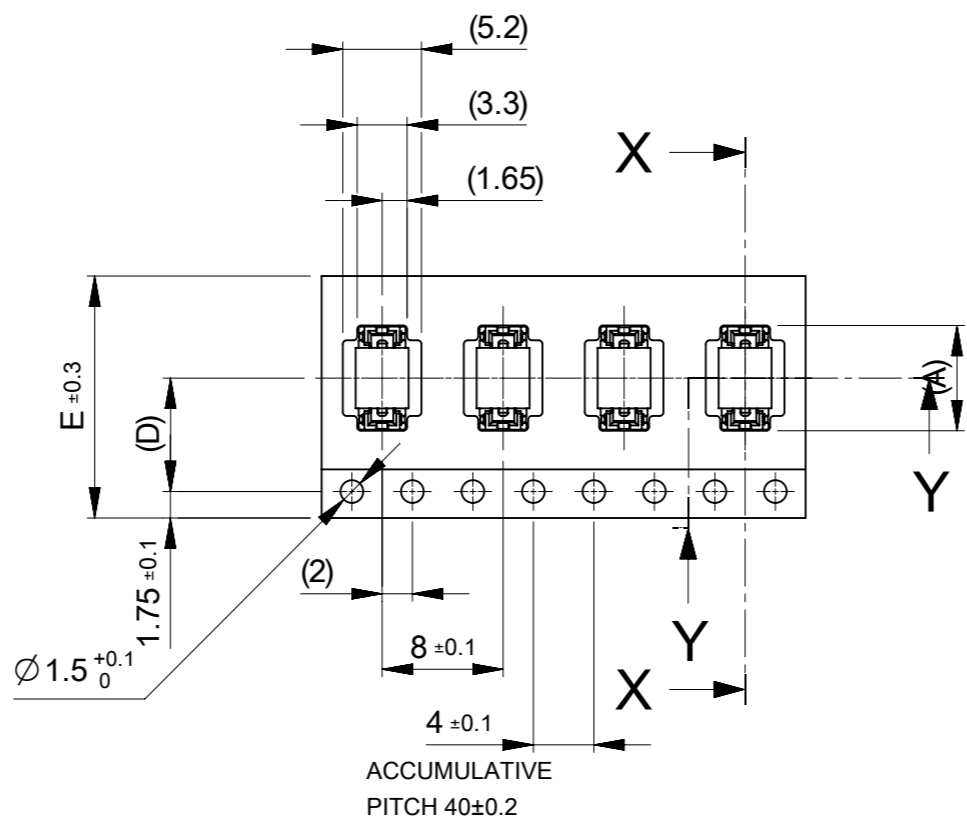
4. TOP TAPE PEEL FORCE IS DEFINED BY IEC60286-3
5. MATERIAL
 CARRIER TAPE : POLYSTYRENE
 TOP TAPE : PET , OTHER
 REEL : POLYSTYRENE(PS)(RECYCLE MATERIAL CONTAINED)

THIS DRAWING CONTAINS INFORMATION THAT IS PROPRIETARY TO MOLEX ELECTRONIC TECHNOLOGIES, LLC AND SHOULD NOT BE USED WITHOUT WRITTEN PERMISSION									
DIMENSION UNITS mm		SCALE 1:5		CURRENT REV DESC:				molex	
GENERAL TOLERANCES (UNLESS SPECIFIED)		ANGULAR TOL ± 1.0°		EC NO: 663038 DRWN: AHMADI2 2020/12/21 CHK'D: TKON 2021/05/21 APPR: SHOSHIKAWA 2021/05/21					
4 PLACES ± 0.01		3 PLACES ± 0.03		INITIAL REVISION: DRWN: JFURUKAWA 2019/01/31 APPR: SHOSHIKAWA 2020/05/20				0.4 FLOATING BOARD TO BOARD CONN. H=3 FSB3 REC EMBOSSTAPE PKG	
2 PLACES ± 0.05		1 PLACE ± 0.1		DOCUMENT NUMBER 2049270000-SD				PRODUCT CUSTOMER DRAWING	
0 PLACES ± 0.2		DRAFT WHERE APPLICABLE MUST REMAIN WITHIN DIMENSIONS		THIRD ANGLE PROJECTION		DRAWING A3-SIZE		SERIES 204927	
MATERIAL NUMBER SEE CHART		CUSTOMER GENERAL		DOC TYPE PSD		DOC PART 000		REVISION C	
SHEET NUMBER 1 OF 2									

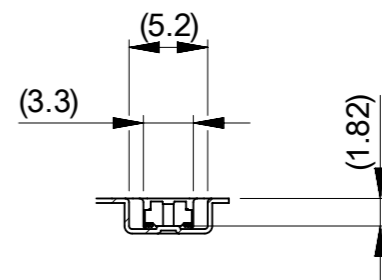
PULL OUT DIRECTION



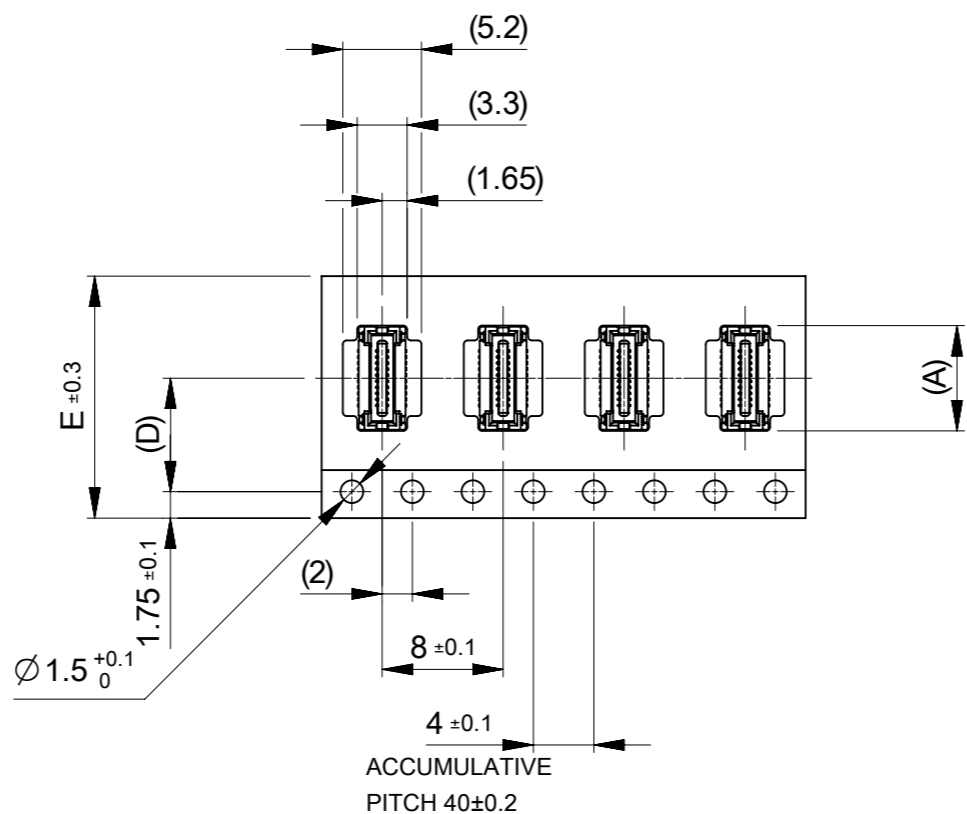
SECTION X-X



2049270**1 (WITH COVER TAPE)



SECTION Y-Y

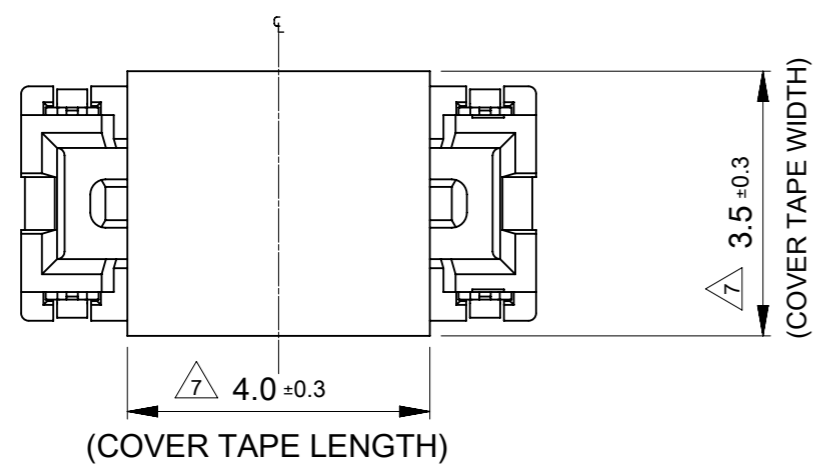
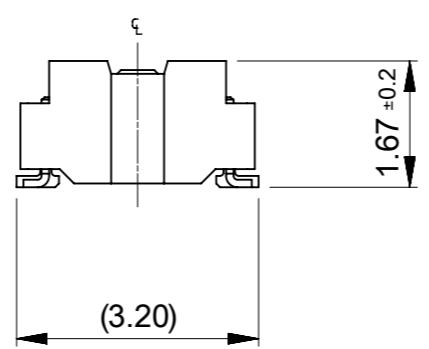
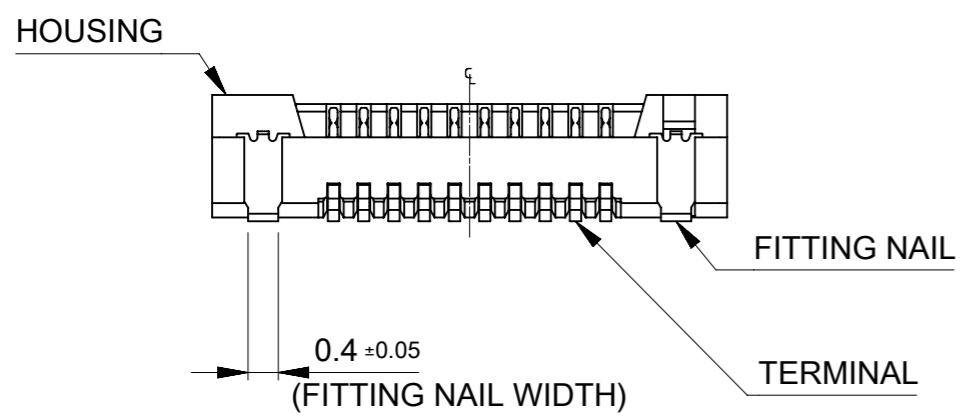
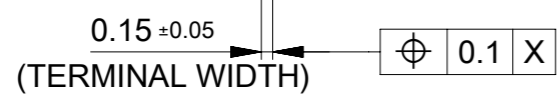
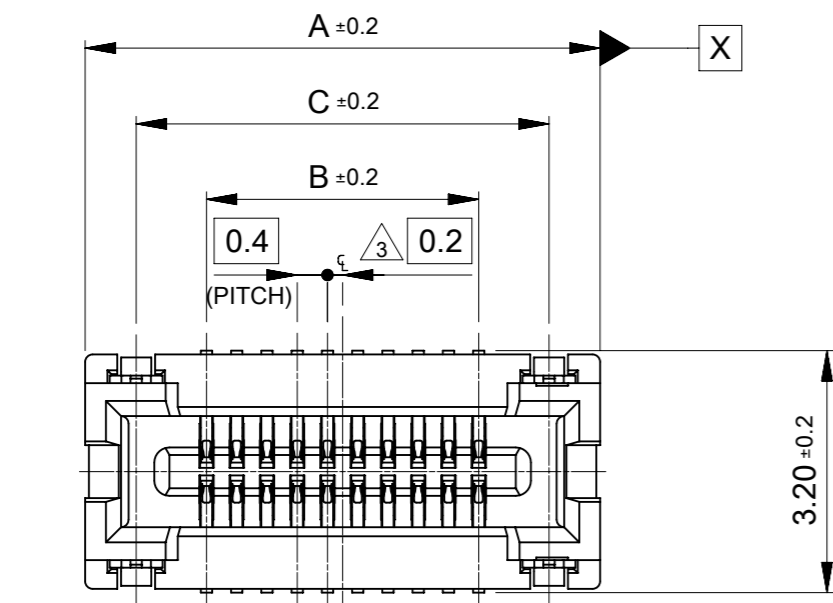


2049270**2 (WITHOUT COVER TAPE)

24	11.5	29.4	25.4	14.96	2049270602	2049270601	60
				12.96	2049270502	2049270501	50
				10.96	2049270402	2049270401	40
				8.96	2049270302	2049270301	30
16	7.5	21.4	17.4	6.96	2049270202	2049270201	20
E	(D)	C	B	(A)	WITHOUT COVER TAPE	WITH COVER TAPE	CIRCUIT
ORDER No.							

THIS DRAWING CONTAINS INFORMATION THAT IS PROPRIETARY TO MOLEX ELECTRONIC TECHNOLOGIES, LLC AND SHOULD NOT BE USED WITHOUT WRITTEN PERMISSION

DIMENSION UNITS mm	SCALE 2:1	CURRENT REV DESC:		molex		
GENERAL TOLERANCES (UNLESS SPECIFIED)		EC NO: 663038				
ANGULAR TOL ± 1.0°	4 PLACES ± 0.01	DRWN: AHMADI2	2020/12/21	PRODUCT CUSTOMER DRAWING		
3 PLACES ± 0.03	2 PLACES ± 0.05	CHK'D: TKON	2021/05/21	DOCUMENT NUMBER		
1 PLACE ± 0.1	0 PLACES ± 0.2	APPR: SHOSHIKAWA	2021/05/21	2049270000-SD		
DRAFT WHERE APPLICABLE MUST REMAIN WITHIN DIMENSIONS		INITIAL REVISION:	DRWN: JFURUKAWA	2019/01/31	MATERIAL NUMBER	CUSTOMER
THIRD ANGLE PROJECTION		APPR: SHOSHIKAWA	2020/05/20	204927	SEE CHART	GENERAL
DRAWING		SERIES	204927	SHEET NUMBER		2 OF 2



COVER TAPE LAYOUT

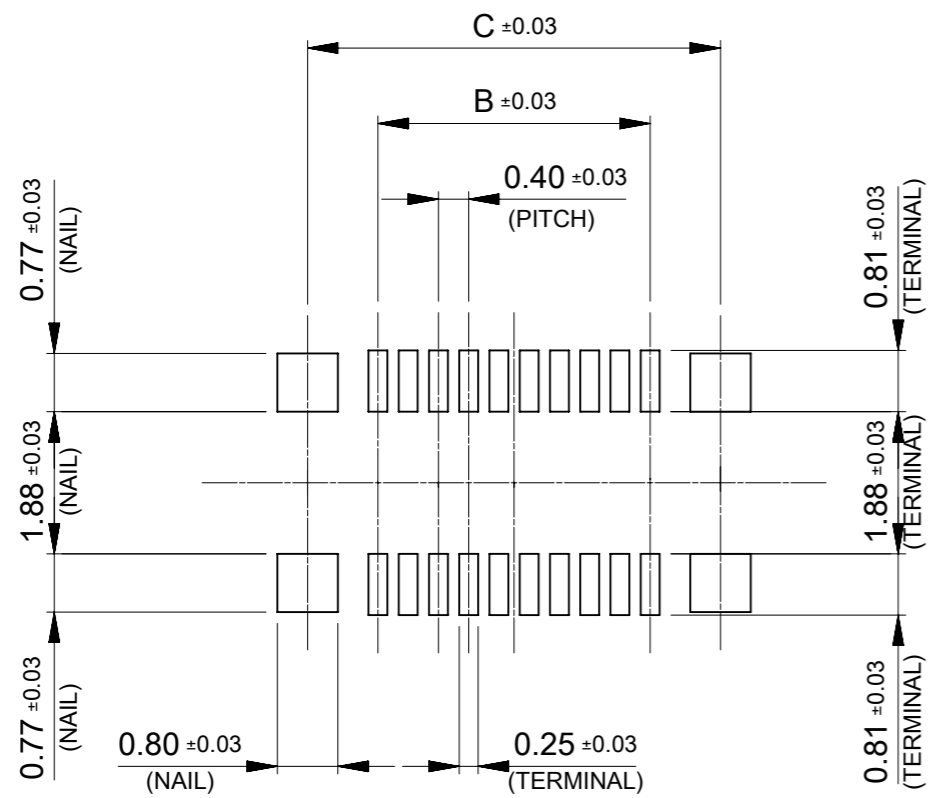
NOTES

- 1 MATERIAL
HOUSING: LIQUID CRYSTAL POLYMER UL94V-0 (COLOR :BLACK)
TERMINAL: COPPER ALLOY
FITTING NAIL: COPPER ALLOY
COVER TAPE: POLYIMIDE
- 2 PLATING
TERMINAL :
CONTACT AREA: GOLD PLATING.
SOLDER TAIL AREA: GOLD PLATING.
UNDERPLATING: NICKEL OVERALL.
*DIVIDE INTO PARTS THE GOLD PLATING OF CONTACT AREA AND TAIL AREA BY THE NICKEL PLATING.
FITTING NAIL:
SURFACE:TIN OVERALL
UNDERPLATING: NICKEL OVERALL.
- 3 APPLY FOR (CIRCUIT/2)=EVEN.
- 4 MATE WITH :204928****
- 5 TAIL AND FITTING NAIL COPLANARITY TO BE 0.1MAXIMUM.
- 6 STACK HEIGHT IS KEPT FIXED BY SPACER.
- 7 COMMON LENGTH TO ALL CIRCUIT.
- 8 THIS DIMENSION SHOWS THE DIMENSION BETWEEN SOLDERING SURFACE OF SOLDER TAILS.

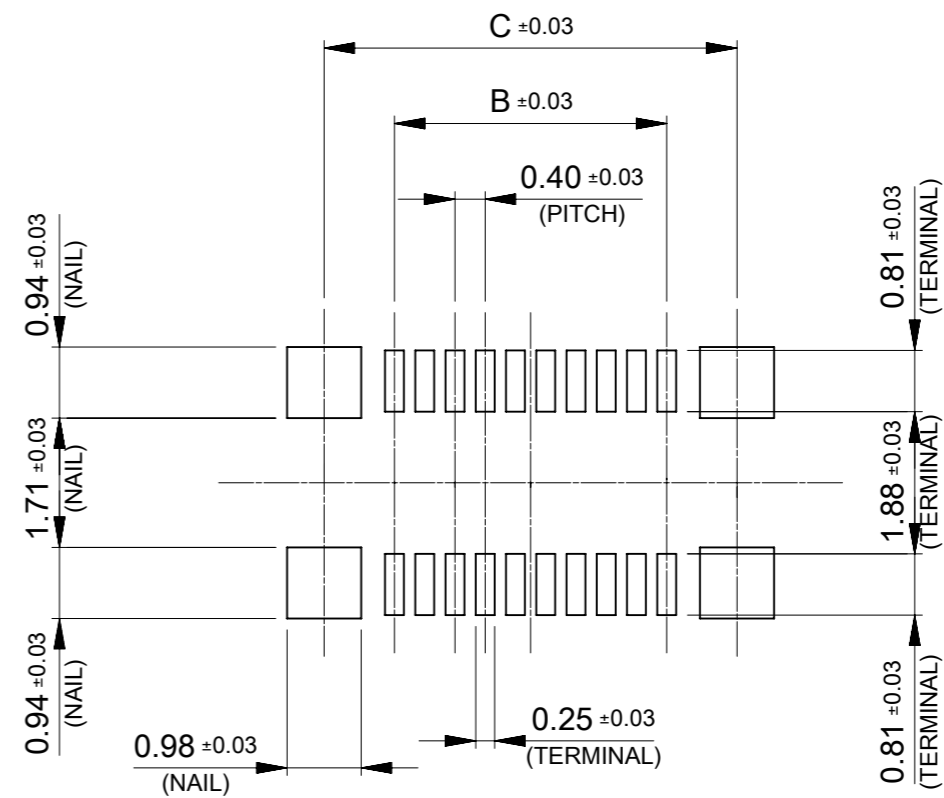
13.46	11.6	14.81	2049270602	2049270601	60
11.46	9.6	12.81	2049270502	2049270501	50
9.46	7.6	10.81	2049270402	2049270401	40
7.46	5.6	8.81	2049270302	2049270301	30
5.46	3.6	6.81	2049270202	2049270201	20
C	B	A	WITHOUT COVER TAPE	WITH COVER TAPE	CIRCUIT
			EMBOSSED TAPE PACKAGE		
			ORDER NO.		

THIS DRAWING CONTAINS INFORMATION THAT IS PROPRIETARY TO MOLEX ELECTRONIC TECHNOLOGIES, LLC AND SHOULD NOT BE USED WITHOUT WRITTEN PERMISSION

DIMENSION UNITS mm	SCALE 10:1	CURRENT REV DESC:		molex		
GENERAL TOLERANCES (UNLESS SPECIFIED)		EC NO: 663038				
ANGULAR TOL	± 3.0 °	DRWN: AHMADI2		2020/12/21		
4 PLACES	± 0.03	CHK'D: TKON		2021/05/21		
3 PLACES	± 0.03	APPR: SHOSHIKAWA		2021/05/21		
2 PLACES	± 0.05	INITIAL REVISION:		PRODUCT CUSTOMER DRAWING		
1 PLACE	± 0.1	DRWN: JFURUKAWA		DOCUMENT NUMBER		
0 PLACES	± 0.2	APPR: SHOSHIKAWA		2049271000-SD		
DRAFT WHERE APPLICABLE MUST REMAIN WITHIN DIMENSIONS		THIRD ANGLE PROJECTION	DRAWING	SERIES	MATERIAL NUMBER	CUSTOMER
			A3-SIZE	204927	SEE CHART	GENERAL
					DOC TYPE	DOC PART
					PSD	000
					REVISION	C
					SHEET NUMBER	
					1 OF 2	

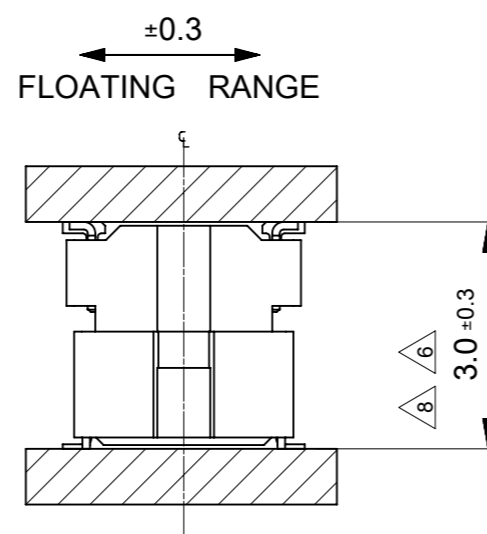
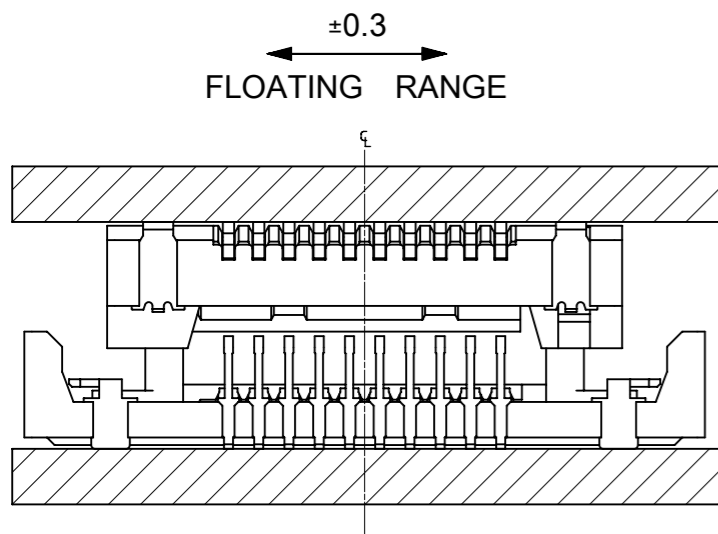


RECOMMENDED P.W. BOARD PATTERN LAYOUT(REFERENCE)



RECOMMENDED METAL MASK LAYOUT(REFERENCE)

RECOMMENDED THICKNESS OF METAL MASK : $t=0.1\text{mm}$
 RECOMMENDED OPEN APERTURE RATIO OF METAL MASK : TERMINAL 100%, NAIL 150%



THIS DRAWING CONTAINS INFORMATION THAT IS PROPRIETARY TO MOLEX ELECTRONIC TECHNOLOGIES, LLC AND SHOULD NOT BE USED WITHOUT WRITTEN PERMISSION		CURRENT REV DESC:		molex	
DIMENSION UNITS	SCALE				
mm	10:1			PRODUCT CUSTOMER DRAWING	
GENERAL TOLERANCES (UNLESS SPECIFIED)		EC NO: 663038		DOCUMENT NUMBER	
ANGULAR TOL ± 3.0°		DRWN: AHMADI2 2020/12/21		2049271000-SD	
4 PLACES ± 0.03		CHK'D: TKON 2021/05/21		DOC TYPE DOC PART REVISION	
3 PLACES ± 0.03		APPR: SHOSHIKAWA 2021/05/21		PSD 000 C	
2 PLACES ± 0.05		INITIAL REVISION:		MATERIAL NUMBER	
1 PLACE ± 0.1		DRWN: JFURUKAWA 2018/11/22		CUSTOMER	
0 PLACES ± 0.2		APPR: SHOSHIKAWA 2020/05/20		GENERAL	
DRAFT WHERE APPLICABLE MUST REMAIN WITHIN DIMENSIONS		THIRD ANGLE PROJECTION	DRAWING	SERIES	SHEET NUMBER
			A3-SIZE	204927	2 OF 2