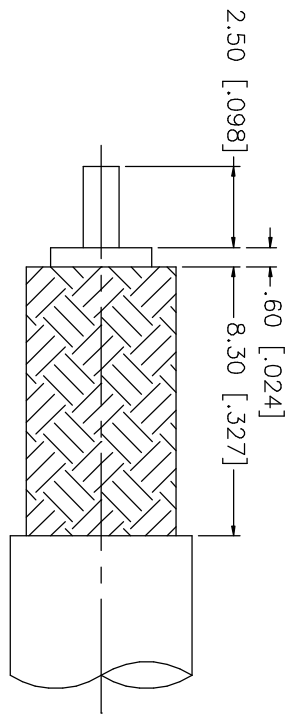
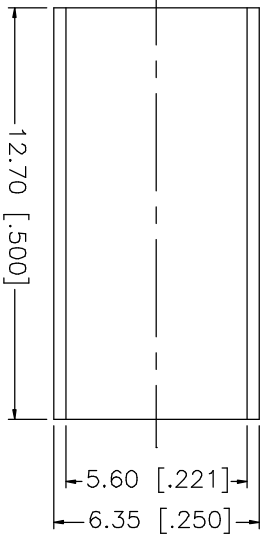
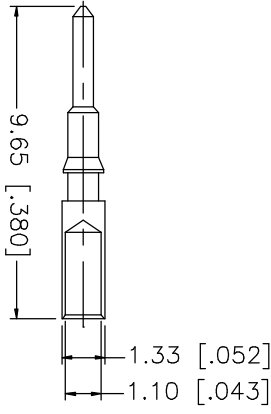
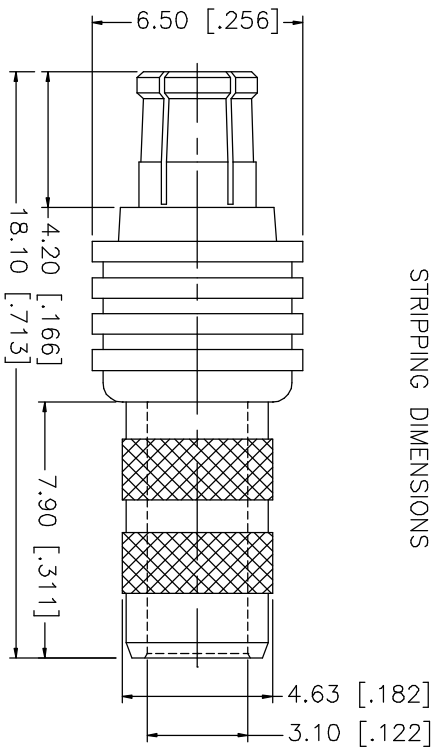


REV.	DATE	DESCRIPTION
NC	11/27/02	INITIAL RELEASE



RECOMMENDED CABLE STRIPPING DIMENSIONS



NOTES:

1. CRIMPED FERRULE  
HEX CRIMP SIZE .213"
2. CRIMPED CONTACT PIN  
SQ. CRIMP SIZE .043"

8			
7			
6			
5			
4	FERRULE	COPPER	GOLD
3	CONTACT PIN	BRASS	GOLD
2	INSULATOR	TEFLON	NATURAL
1	BODY	BER. COPPER	GOLD
	DESCRIPTION	MATERIAL	FINISH

UNLESS OTHERWISE SPECIFIED DIMENSIONS ARE IN MILLIMETERS  
DIMENSIONS IN [ ] ARE IN INCHES FOR CUSTOMER REFERENCE ONLY

UNLESS OTHERWISE SPECIFIED TOLERANCES FOR INCHES ARE:  
.XXX = ± 0.005"  
.XX = ± 0.010"  
.X = ± 0.020"

DO NOT SCALE DRAWING

APPROVALS		DATE
DRAWN	G.R.S.	11/27/02
CHECKED		
ISSUED		

**Amphenol - Connex**  
CONNECTOR CORPORATION

M CX CRIMP PLUG  
(FOR RG-58A/U, 58C/U CABLE)

TITLE	SIZE	FSCM NO.	DWG. NO.	REV.
	A	99001	252180.DWG	NC
SCALE	NA	PART NO.	252180	SHEET
				1 OF 1