

THIS DRAWING IS UNPUBLISHED.		RELEASED FOR PUBLICATION		2007	
COPYRIGHT 2007 BY TICO ELECTRONICS CORPORATION. ALL RIGHTS RESERVED.					
PART NUMBER	REV	FIRST USED	POWER UNIT	FEED TYPE	
567750-1	D	354500-3	LEADMAKER	MECHANICAL-POST FEED	

- 1 RECOMMENDED SPARE PARTS.
- 2 GREASE LIGHTLY.
- 3 AFTER ASSEMBLY OF APPLICATOR, PROPER SPRING PRESSURE (ITEM 34) CAN BE OBTAINED BY TIGHTENING SET SCREW (ITEM 105) UNTIL CONTACT IS MADE WITH SPACER (ITEM 32) THEN TIGHTEN AN ADDITIONAL 5 1/2-6 REVOLUTIONS.
- 4 DO NOT EXCEED 80 CRIMPS PER MINUTE WITH THIS APPLICATOR.
- 5 APPLY LOCTITE 222.

1	-	3-21081-2	SHCS, 1/4-20 X 1	142
2	-	2-21000-0	SCR, SKT HD CAP 6-32 X .500	141
1	-	1804318-1	BRACKET, MAGNET HOLDER	140
1	-	1804303-1	BRACKET, COUNTER MOUNTING	139
2	-	21024-3	WASHER, SPRG LOCK, REG NO 6	138

TERMINAL NAME: FLAG, FASTON, .187 SERIES						
62817	-	-	AMP TERMINAL - AMP CRIMP SPECS			
-	-	-	PAB LTR	CRIMP HEIGHT	WIRE SIZE	Ø SOLDER
-	-	-	A	.040±.002	16	-
-	-	-	B	.037±.002	18 OR (2)20	-
-	-	-	C	.035±.002	20	-
-	-	-	D	-	-	-
-	-	-	CRIMP	SIZE	TYPE	RANGE
-	-	-	WIRE	.140	TAB LOC	20-16
-	-	-	INSUL	.200	O	.170-.225

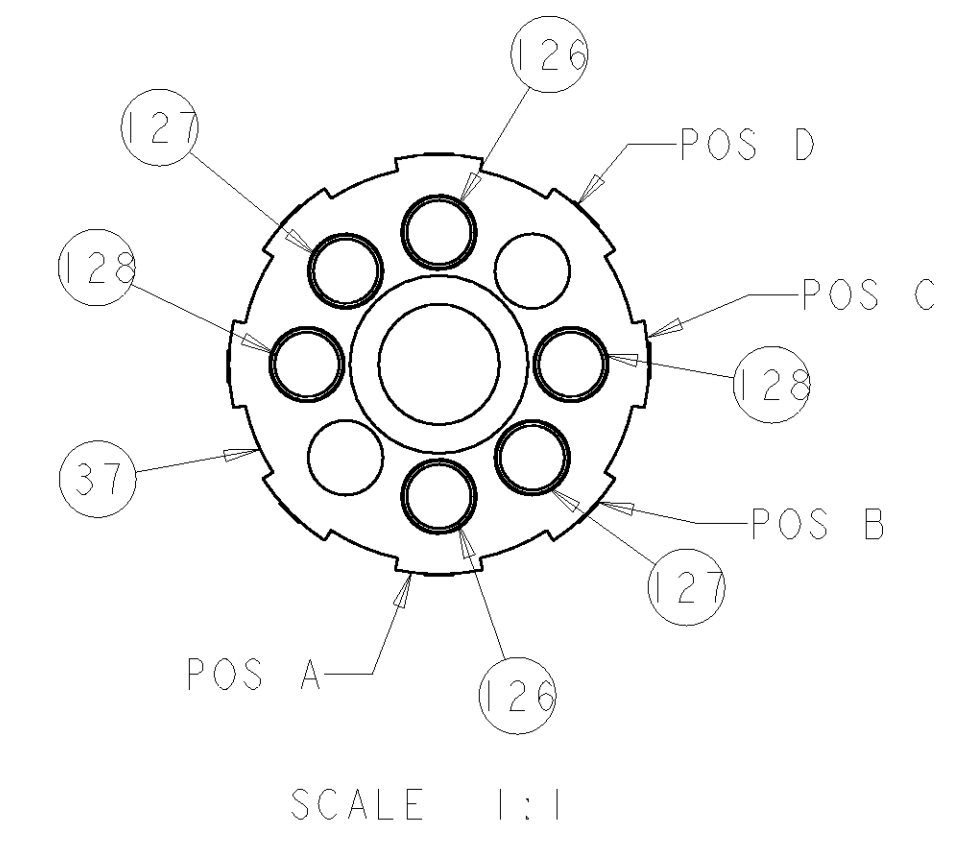
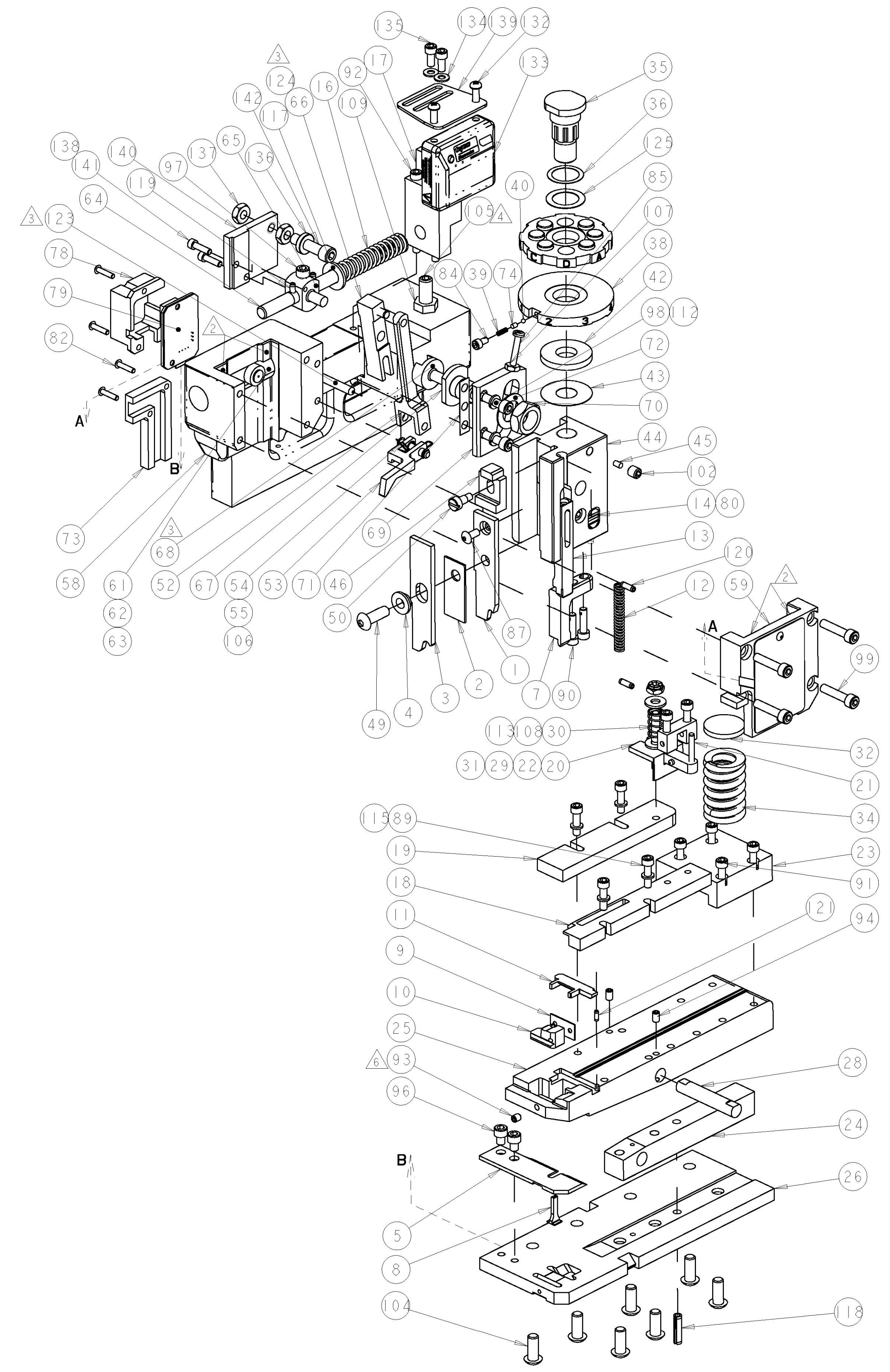
WIRE STRIP LENGTH	TERM APPL SPEC	FEED .640	APPL INSTRUCTIONS AT 8031	SET UP GAGE	LAYOUT LISTING
2	-	22593-1	NUT, HEX, JAM ,SS		137
1	-	1804310-1	MAGNET, RING		136
2	-	2-21000-6	SCR, SKT HD CAP 8-32 X .375		135
2	-	18028-2	WASHER, FLAT, REG M4		134
1	-	1804300-1	ASSEMBLY, APPLICATOR COUNTER		133
2	-	994991-5	SCREW, OVL HD, M4X12		132
2	-	4-354779-8	PIN, WIRE DISC (MARKED)		128
2	-	4-354779-6	PIN, WIRE DISC (MARKED)		127
2	-	4-354779-2	PIN, WIRE DISC (MARKED)		126
1	-	986950-1	WASHER, FLAT PRECISION		125
1	-	1-21030-2	PIN, DOWEL .1875 X .625		124
1	-	1-21030-6	PIN, DOWEL .1875 X 1.250		123
1	-	3-21028-2	PIN, SLOTTED SPRING .094 X .250		121
2	-	4-21028-9	PIN, SLOTTED SPRING .125 X .375		120
2	-	5-21028-1	PIN, SLOTTED SPRING .125 X .500		119
1	-	21029-5	PIN, SLOTTED SPRING .188 X .750		118
1	-	21899-4	WASHER, FLAT		117
4	-	21024-4	WASHER, SPRG LOCK, REG NO 8		115
2	-	21899-2	WASHER, FLAT		113
2	-	21024-5	WASHER, SPRG LOCK, REG NO 10		112
1	-	1-22202-7	NUT, HEX, JAM 5/16-24/UNF		109
1	-	21022-3	NUT, HEX, SELF-LOCKING, THIN, 10-32		108
1	-	21018-5	NUT, HEX, REG 6-32		107
2	-	21045-3	RING, RETAIN, EXTERN, 3/16 CRESCENT		106
1	-	8-21007-5	SCR, SET, CUP POINT 5/16-24 X .750		105
7	-	2-22733-8	SCR, BHSC, SELF-LOCKING, 1/4-20 X .625		104
1	-	21009-2	SCR, SET, SELF LOCKING 1/4-20 X .250		102
1	-	3-21000-9	SCR, SKT HD CAP 10-32 X 1.000		100
4	-	3-21000-8	SCR, SKT HD CAP 10-32 X .875		99
2	-	3-21000-6	SCR, SKT HD CAP 10-32 X .625		98
1	-	3-21000-4	SCR, SKT HD CAP 10-32 X .375		97
2	-	7-21000-5	SCR, SKT HD CAP 10-32 X .250		96
2	-	4-21006-0	SCR, SET, CUP POINT 8-32 X .250		94
1	-	21061-9	SCR, SET, CONE POINT 8-32 X .250		93
2	-	9-21000-3	SCR, SKT HD CAP 8-32 X 2.000		92
4	-	2-21000-9	SCR, SKT HD CAP 8-32 X .750		91
2	-	1-23030-1	SCR, SKT HD CAP, S-LOCK, 8-32 X .625		90
6	-	2-21000-8	SCR, SKT HD CAP 8-32 X .625		89
1	-	2-21002-1	SCR, BTN SKT HD CAP 8-32 X .375		87
1	-	6-23715-5	SCR, PAN SLT HD MACH 6-32 X 1.500		85
1	-	23030-1	SCR, SKT HD CAP, S-LOCK, 6-32 X .25		84
4	-	1-21002-5	SCR, BTN SKT HD CAP 4-40 X .500		82
1	-	2-21006-9	SCR, SET, CUP POINT 6-32 X .250		80
1	-	856822-1	PCB ASSEMBLY		79
1	-	856825-1	COVER, PCB		78
1	-	690603-1	SPRING ASSIST AMP-O-MATOR APPLICATOR		74
1	-	314867-1	COVER, FLAT FLEX		73
1	-	458109-1	WASHER, SPECIAL ADJUST PLATE		72
1	-	690517-1	SPACER, ADJ PLATE		71
1	-	22594-8	NUT, HEX, JAM		70
1	-	240628-1	PLATE, ADJUSTING		69

LOC		DIST		REVISIONS			
A	66	P	LTR	DESCRIPTION	DATE	BY	APPD
		D		ECR-07-006533	27MAR2007	EW	TE

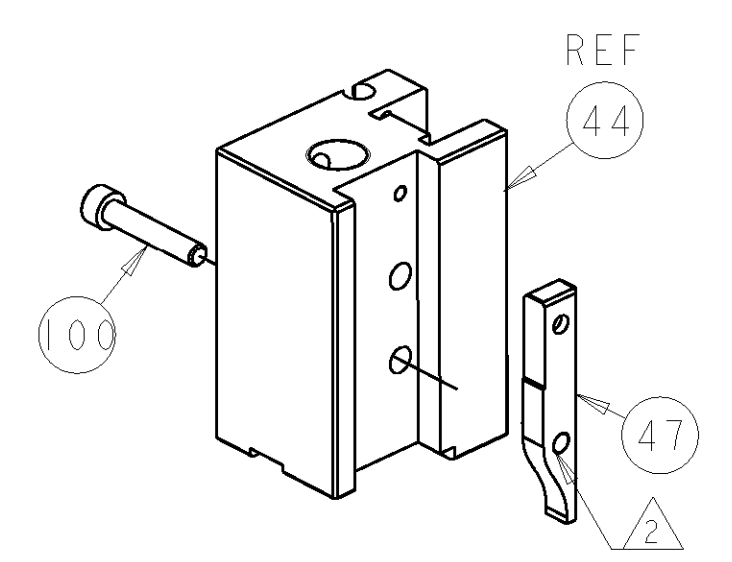
I	-	240626-1	SHAFT-PIVOT AMP-O-MATOR	68
I	-	240633-1	BUSHING	67
I	-	240630-1	LEVER, INTERMEDIATE	66
I	-	1804317-1	BLOCK, PIVOT	65
I	-	1633286-1	SCREW, ADJUSTMENT	64
I	-	240659-3	PIN, CAM ROLLER	63
I	-	240658-1	ROLLER-CAM	62
I	-	240631-1	ROD, FEED	61
I	-	768623-1	MODIFIED CAP ASSEMBLY	59
I	-	768680-1	HOUSING, MODIFIED	58
I	-	240624-1	PIN, FEED FINGER	55
I	-	691499-1	SPRING-FEED FINGER	54
I	-	454568-2	FINGER, FEED	53
I	-	240634-1	LEVER, TERMINAL FEED	52
I	-	22353-8	SCR, SHLD, SLOT HD, 3/16 DIA	50
I	-	3-21002-5	SCR, BTN SKT HD CAP 1/4-20 X .750	49
I	-	238015-1	CAM, POST FEED 1 5/8	47
I	-	690578-1	INSULATION ADJUST BLOCK	46
I	-	690191-1	PLUG, NYLON	45
I	-	856807-1	RAM, SPECIAL	44
I	-	690125-1	SHIM SUB-ASSY	43
I	-	1-690124-1	WASHER, RAM (.150)	42
I	-	23241-6	BALL, STEEL	40
I	-	690170-1	SPRING, COMPRESSION	39
I	-	690142-1	DISC, INSULATION	38
I	-	354777-1	WIRE DISC, ASSEMBLY	37
I	-	22480-5	WASHER, WAVE SPRING	36
I	-	690212-1	POST, RAM	35
I	-	3-23846-5	SPRING, DIE	34
I	-	690573-1	SPACER, SPRING	32
I	-	454569-1	MOUNT, DRAG	31
I	-	1-22354-8	STUD, THREADED	30
I	-	21030-2	PIN, DOWEL .1250 X .500	29
I	-	690582-1	PIN, HINGE	28
I	-	768624-1	PLATE, BASE, COM	26
I	-	856801-1	MODIFIED HINGE BAR	25
I	-	690571-1	STABILIZER	24
I	-	690585-1	BLOCK, SPRING PRESSURE	23
I	-	1-22282-3	SPRING, COMPRESSION	22
I	-	21030-6	PIN, DOWEL .1250 X 1.000	21
I	-	454570-1	DRAG, STOCK	20
I	-	454573-1	GUIDE, STRIP, REAR	19
I	-	454571-2	GUIDE, FRONT STRIP	18
I	-	1804319-1	GUIDE, FEED ROD	17
I	-	4-22284-9	SPRING, COMPRESSION	16
I	-	853498-1	MAGNET ASSEMBLY	14
I	-	692134-7	TERMINAL POSITIONER	13
I	-	5-22280-5	SPRING, COMPRESSION	12
I	-	454712-5	PLATE, REAR SHEAR	11
I	-	683641-1	ANVIL, INSERT	10
I	-	690569-2	PLATE, SHEAR, FRONT	9
I	-	856804-1	ANVIL, COM, 2-AXIS	8
I	-	454575-6	BLADE, SHEAR	7
I	-	856802-1	PLATE, ANVIL RETAINING	5
I	-	690574-1	SPACER, TUBULAR	4
I	-	690764-1	INSULATION CRIMPER	3
I	-	681153-1	SPACER, CRIMPER	2
I	-	690716-3	CRIMPER, WIRE PREMIUM	1
-I	U/M	PART NO	DESCRIPTION	ITEM NO

DIMENSIONS:		TOLERANCES UNLESS OTHERWISE SPECIFIED:		DWG: WEAVER 07FEB2007		TICO Tyco Electronics Harrisburg, PA 17105-3608	
IN		0 PLC ±		CHK: T. ELBIN 07FEB2007		NAME: END FEED COM HINGE BAR APPLICATOR	
Ø		1 PLC ±		APPD: T. ELBIN 07FEB2007		PRODUCT SPEC: -	
H		3 PLC ±		APPLICATION SPEC: -		SIZE: CAGE CODE: DRAWING NO: RESTRICTED TO	
R		4 PLC ±		WEIGHT: -		A100779C=567750	
ANGLES		FINISH: -		CUSTOMER DRAWING		SCALE: 1:1 SHEET 1 OF 2 REV D	

LOC		DIST		REVISIONS			
A	66	P	LTR	DESCRIPTION	DATE	DWN	APVD
		-	-	SEE SHEET 1	-	-	-



POST-FEED 1-5/8 STROKE



ROTATED 180°

<small>THE INFORMATION CONTAINED HEREON IS UNCLASSIFIED EXCEPT WHERE SHOWN OTHERWISE. IT IS THE PROPERTY OF TYCO ELECTRONICS CORPORATION AND IS TO BE CONTAINED AND CONTROLLED BY THE USER'S ORGANIZATION UNLESS SO INDICATED BY THE USER'S ORGANIZATION.</small>		DWN: B. WEAVER 07FEB2007 CHK: T. ELBIN 07FEB2007 APVD: T. ELBIN 07FEB2007	tyco Electronics Tyco Electronics Harrisburg, PA 17105-3608
DIMENSIONS: IN		TOLERANCES UNLESS OTHERWISE SPECIFIED: 0 PLC ± 1 PLC ± 2 PLC ± 3 PLC ± 4 PLC ± ANGLES ±	NAME: END FEED COM HINGE BAR APPLICATOR PRODUCT SPEC: - APPLICATION SPEC: - SIZE: - CAGE CODE: - DRAWING NO: A100779C-567750 RESTRICTED TO: -
MATERIAL: - FINISH: -		WEIGHT: - CUSTOMER DRAWING: -	SCALE: 3:5 SHEET 2 OF 2 REV D

CUSTOMER VIEWABLE ASSEMBLY