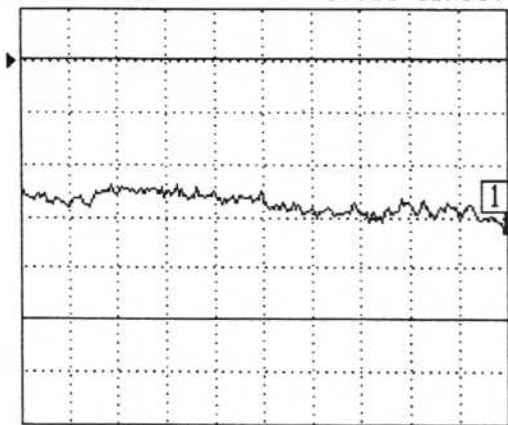
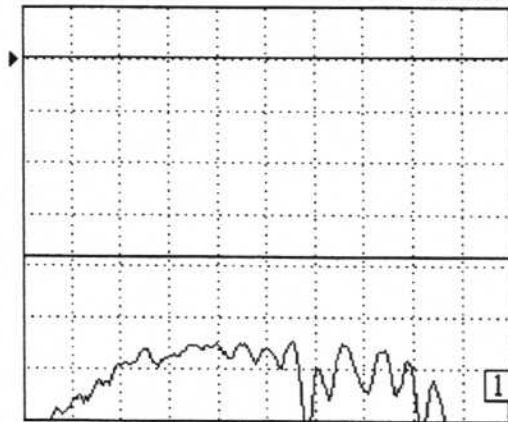


S21 TRANS LOG MAG.  
▶0.000 dB 0.100 dB/DIV



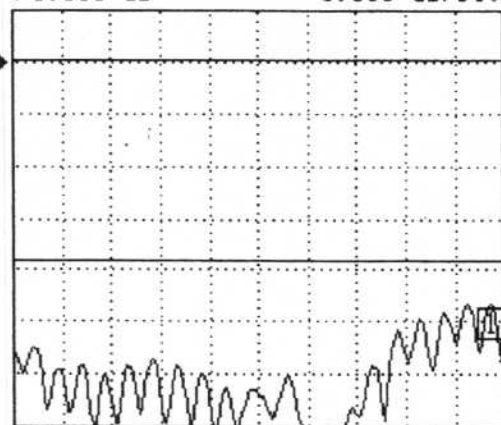
16.000000 GHz 19.000000

S11 REFL LOG MAG.  
▶0.000 dB 5.000 dB/DIV



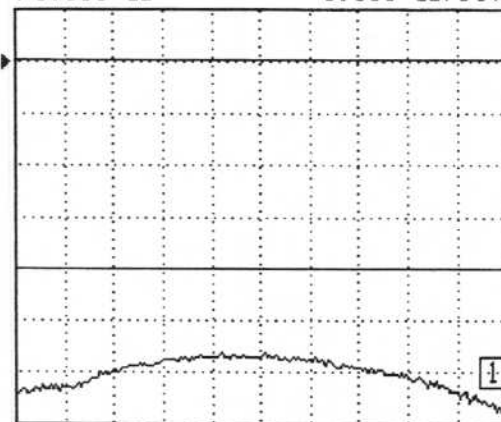
16.000000 GHz 19.000000

S22 REFL LOG MAG.  
▶0.000 dB 5.000 dB/DIV



16.000000 GHz 19.000000

S12 TRANS LOG MAG.  
▶0.000 dB 5.000 dB/DIV



16.000000 GHz 19.000000

CH 1 - S21  
REFERENCE PLANE  
0.0000 mm

MARKER 1  
19.000000 GHz  
-0.334 dB

MARKER TO MAX  
▶ MARKER TO MIN

MARKER READOUT  
FUNCTIONS

D3C 1619 - Circulator

16.0 - 19.0 GHz

Isolation: 20 dB Min

Insertion Loss: 0.50 dB Max

VSWR: 1.25:1 Max

SMA-F All 3 Ports