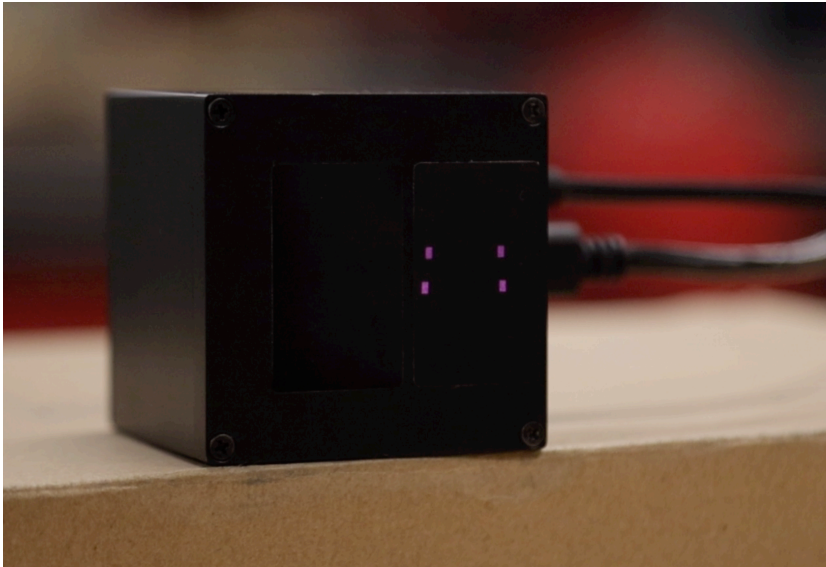


DepthEye Wide

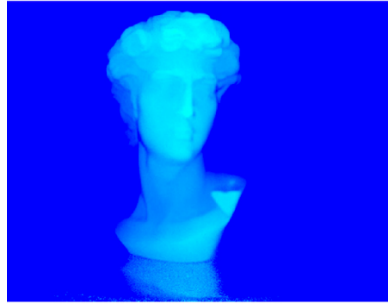
Time-Of-Flight(ToF) Camera with Sony DepthSense



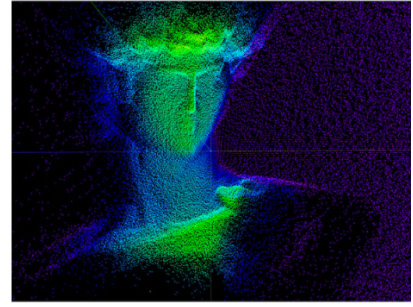
Model	DepthEye Wide
Sensor/Pixel Size	Sony IMX556PLR CMOS /10 μ m
Resolution/FPS	0.3MP 640 x 480 px/ Max 30 FPS
Dimension &Weight	58 x 58 x 52 mm / 305 g
Accuracy	Less than 1cm at 1.5m
Precision	Standard deviation less than 3mm at 1m
Working Range	0.3m to 2.5m
FOV	H100° x V75°
Data Interface	USB 3.1 Gen1 /Type C
Power Consumption	12V/ 1A (Peak) /0.5A(Average)
Illumination	4 x VCSEL laser diodes @ 850nm
Operating Temperature	-10° C to 60° C case temperature
SDK Platform	Windows/Linux/Mac/Ros
SDK language support	C++/Python



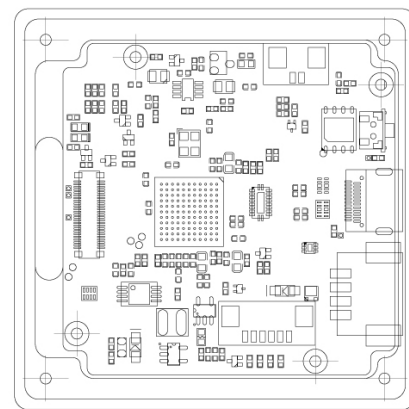
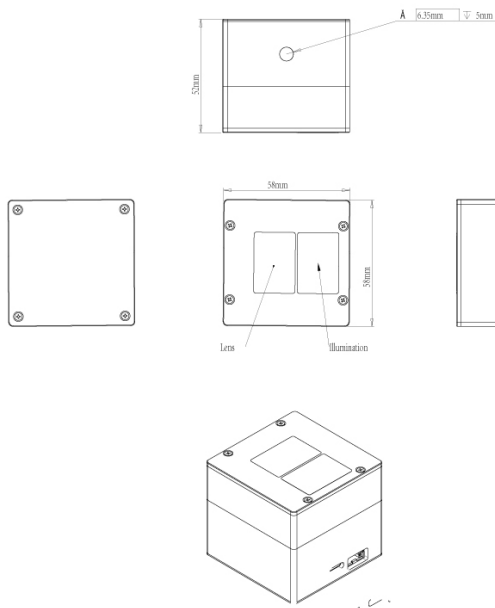
Amplitude Image



Depth Image



PointCloud Image



Support

SDK & Documents

<https://github.com/pointcloudAI/libPointCloud>

Support Email

dev@pointcloud.ai