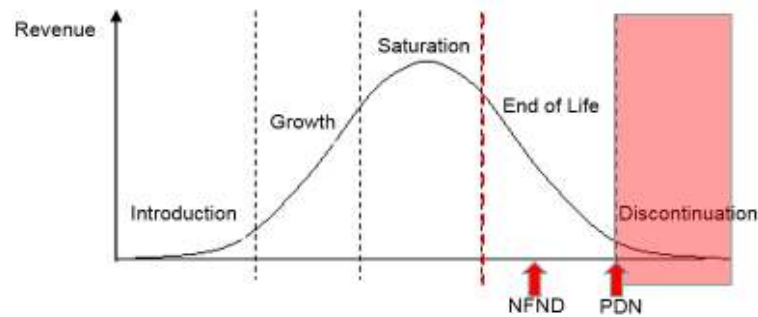


Light is OSRAM

Product Discontinuation (acc. JEDEC J-STD-048) OS-PD-2018-016

15-Feb-2018

Last order:	15-Aug-2018
Last delivery:	15-Feb-2019
Reason:	Consolidation Product Portfolio



Please direct your feedback to your local Sales office.

DISCONTINUED				NEW (REPLACEMENT)			
Device	Ordering Code	Function	Brand	Device	Datasheet Ordering Code	Function	Brand
LCW JNSH.PC-BTCP-5H7I-1-20-R18	Q65111A1664			GW JCLPS2.EM-HPHR-A333-1-65-R33	Q65112A3755		
LCW JNSH.PC-BTCP-5L7N-1-20-R18	Q65111A1665			GW JCLPS2.EM-HPHR-A535-1-65-R33	Q65112A3748		
LCW JNSH.PC-BUCQ-5H7I-1-20-R18	Q65111A2068			GW JCLPS2.EM-HPHR-A333-1-65-R33	Q65112A3755		
LCW JNSH.PC-BUCQ-5L7N-1-20-R18	Q65111A2554			GW JCLPS2.EM-HPHR-A535-1-65-R33	Q65112A3748		
LCW JNSH.PC-BUCQ-5R8T-1-20-R18	Q65111A4628			GW JCLPS2.EM-GUHQ-A737-1-65-R33	Q65112A3733		
LCW JNSH.PC-CPCR-5H7I-1-20-R18	Q65111A5853			GW JCLPS2.EM-HPHR-A333-1-65-R33	Q65112A3755		
LCW JNSH.PC-CPCR-5L7N-1-20-R18	Q65111A5852			GW JCLPS2.EM-HPHR-A535-1-65-R33	Q65112A3748		
LCW JNSH.PC-BUCP-6R8T-L1N2-20-R18-LM	Q65111A4615			No direct Q# replacement. Please refer to standard Q#			

Products Affected by Product Discontinuation Notification

Number: OS-PD-2018-016

Name: Discontinuation due to Consolidation of Product Portfolio

Release Date: 2/14/2018

Last Order: 8/15/2018

Last Delivery: 2/15/2019

DISCONTINUED

NEW (REPLACEMENT)

<i>Product</i>	<i>QNumber</i>	<i>QNumber Description</i>	<i>Part Number</i>	<i>Product</i>	<i>QNumber</i>	<i>QNumber Description</i>	<i>Part Number</i>
LCW JNSH.P	Q65111A1664	LCW JNSH.PC-BTCP-5H7I-1-20-R18	LCW JNSH.PC-BTCP-5H7I-1	GW JCLPS2.	Q65112A3755	GW JCLPS2.EM-HPHR-A333-1-65-R33	
LCW JNSH.P	Q65111A1665	LCW JNSH.PC-BTCP-5L7N-1-20-R18	LCW JNSH.PC-BTCP-5L7N-1	GW JCLPS2.	Q65112A3748	GW JCLPS2.EM-HPHR-A535-1-65-R33	
LCW JNSH.P	Q65111A2068	LCW JNSH.PC-BUCQ-5H7I-1-20-R18	LCW JNSH.PC-BUCQ-5H7I-1	GW JCLPS2.	Q65112A3755	GW JCLPS2.EM-HPHR-A333-1-65-R33	
LCW JNSH.P	Q65111A2554	LCW JNSH.PC-BUCQ-5L7N-1-20-R18	LCW JNSH.PC-BUCQ-5L7N-1	GW JCLPS2.	Q65112A3748	GW JCLPS2.EM-HPHR-A535-1-65-R33	
LCW JNSH.P	Q65111A4615	LCW JNSH.PC-BUCP-6R8T-L1N2-20-R18-LM	LCW JNSH.PC-BUCP-6R8T-L1N2-LM	No direct Q#		No direct Q# replacement. Please refer to sta	
LCW JNSH.P	Q65111A4628	LCW JNSH.PC-BUCQ-5R8T-1-20-R18	LCW JNSH.PC-BUCQ-5R8T-1	GW JCLPS2.	Q65112A3733	GW JCLPS2.EM-GUHQ-A737-1-65-R33	
LCW JNSH.P	Q65111A5852	LCW JNSH.PC-CPCR-5L7N-1-20-R18	LCW JNSH.PC-CPCR-5L7N-1	GW JCLPS2.	Q65112A3748	GW JCLPS2.EM-HPHR-A535-1-65-R33	
LCW JNSH.P	Q65111A5853	LCW JNSH.PC-CPCR-5H7I-1-20-R18	LCW JNSH.PC-CPCR-5H7I-1	GW JCLPS2.	Q65112A3755	GW JCLPS2.EM-HPHR-A333-1-65-R33	

LastTimeBuy	QNbr_Discont	QNbrDesc_Discont	Products.QNbrDesc_Z1	QNbr_Replace	QNbrDesc_Replace
15-Aug-18	Q65111A1664	LCW JNSH.PC-BTCP-5H7I-1-20-R18	LCW JNSH.PC-BTCP-5H7I-1	Q65112A3755	GW JCLPS2.EM-HPHR-A333-1-65-R33
15-Aug-18	Q65111A1665	LCW JNSH.PC-BTCP-5L7N-1-20-R18	LCW JNSH.PC-BTCP-5L7N-1	Q65112A3748	GW JCLPS2.EM-HPHR-A535-1-65-R33
15-Aug-18	Q65111A2068	LCW JNSH.PC-BUCQ-5H7I-1-20-R18	LCW JNSH.PC-BUCQ-5H7I-1	Q65112A3755	GW JCLPS2.EM-HPHR-A333-1-65-R33
15-Aug-18	Q65111A2554	LCW JNSH.PC-BUCQ-5L7N-1-20-R18	LCW JNSH.PC-BUCQ-5L7N-1	Q65112A3748	GW JCLPS2.EM-HPHR-A535-1-65-R33
15-Aug-18	Q65111A4628	LCW JNSH.PC-BUCQ-5R8T-1-20-R18	LCW JNSH.PC-BUCQ-5R8T-1	Q65112A3733	GW JCLPS2.EM-GUHQ-A737-1-65-R33
15-Aug-18	Q65111A5853	LCW JNSH.PC-CPCR-5H7I-1-20-R18	LCW JNSH.PC-CPCR-5H7I-1	Q65112A3755	GW JCLPS2.EM-HPHR-A333-1-65-R33
15-Aug-18	Q65111A5852	LCW JNSH.PC-CPCR-5L7N-1-20-R18	LCW JNSH.PC-CPCR-5L7N-1	Q65112A3748	GW JCLPS2.EM-HPHR-A535-1-65-R33
15-Aug-18	Q65111A4615	LCW JNSH.PC-BUCP-6R8T-L1N2-20-R18-LM	LCW JNSH.PC-BUCP-6R8T-L1N2-LM		No direct Q# replacement. Please refer to standard