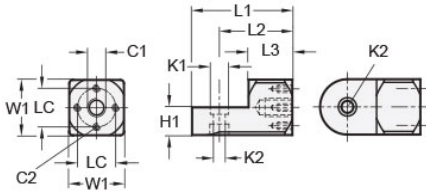




MT20-SWMB-M10-A

Ruland Swivel Mounting Block, Width/Height 30mm, Length 55mm, Aluminum



Description

Ruland MT20-SWMB-M10-A is a cross pattern swivel mounting block with an M10 tapped center hole, M4 threads in the cross, a 15mm base height, a 30mm width and height, a and 55mm overall length. It is designed to fit with Ruland modular mounting system swivel components that begin with MT20. MT20-SWMB-M10-A is aluminum and screws are 304 stainless steel for use in most industrial applications. This swivel mounting block is used to support brackets for mounting sensors, screens, reflectors, plexiglass machine guards, and other industrial components. It has a cross pattern allowing the user to mount with a single M10 screw through the center of the bracket or with multiple M4 screws in the arms of the cross. The use of a cross pattern prevents the bracket from rotating if the mounted component has high mass or will have force applied to it such as a screen. An MT20-SWALK-M6-30 adjustable clamping handle can be used to rapidly reposition MT20-SWMB-M10-A without the use of tools. It is manufactured by Otto Ganter, inventoried by Ruland, and RoHS3 compliant.

Product Specifications

Center Thread C1	M10	Cross Thread C2	M4 x 4
Counterbore 1 Diameter K1	10 mm	Counterbore 2 Diameter K2	6.5 mm
Width & Height W1	30 mm	Base Height H1	15 mm
Center To Center LC	20 mm	Edge To Center Of Counterbore L2	40 mm
Overall Length L1	55 mm	Hub Length LH	24 mm
Material Specification	Aluminum	Manufacturer	JW Winco/ Otto Ganter
Country of Origin	Germany	Weight (lbs)	0.181800
UPC	634529302347	Tariff Code	7609.00.0000
UNSPC	31162908		