

# NEO CRUCIBLE

3D Printers for Industry

## Creality Sermoon D1 Industrial Grade FDM 3D Printer

Print Volume  
22,568 cm<sup>3</sup>



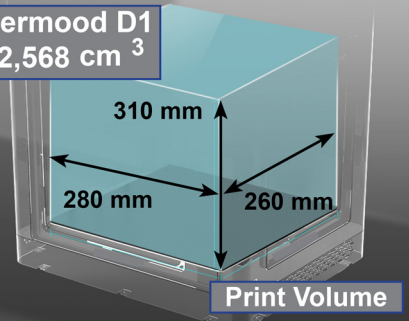
### Industrial Grade Customer Support

- Warranty & Repair Support
- Replacement Parts in Stock
- Technical Support & Consulting

### Industrial Grade Material Capabilities

- Fully Enclosed for Temperature Stability
- Max Hotbed Temperature: 100°C (212°F)
- Max Nozzle Temperature: 250°C (482°F)
- Designed for PLA, TPU, PETG

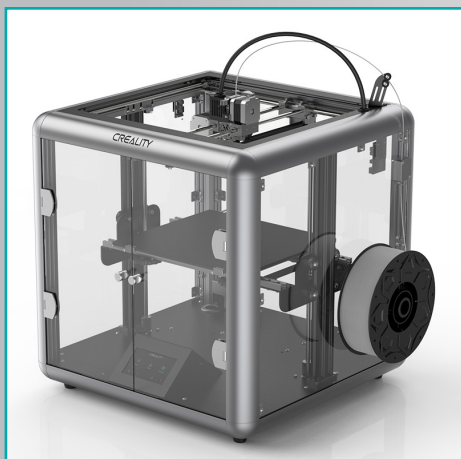
Sermood D1  
22,568 cm<sup>3</sup>



### Max Print Volume

**22,568 Cubic cm (cm<sup>3</sup>) (1383 Cubic Inches)**

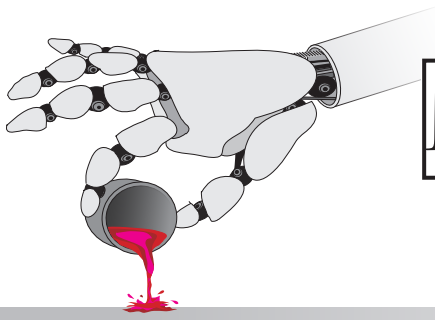
- X Dimension: 280 mm (11.0 Inches)
- Y Dimension: 260 mm (10.2 Inches)
- Z Dimension: 310 mm (12.2 Inches)



### Industrial Grade Applications

- What ifs...
- Prototypes
- Test Fixtures
- Production Fixtures
- Concept Justification
- Packaging Evaluations
- Product Shape Alternatives
- Finished Goods Production

Under  
**\$700**  
Ask for a  
Quote  
[sales@neocrucible.com](mailto:sales@neocrucible.com)



# NEO CRUCIBLE

**3D Printers for Industry**

A Division of Lodestone Group

## Sermoon D1 Specifications

Master Process Chip: ATMEGA 2560

Whisper Quiet for Office Environments

Power Loss-Recovery ● Filament Run-Out Sensor

4.3 Color Touch Screen ● File Transfer via SD Card

Power Supply Rating: 115/230 Volts AC - 24 Volts DC

Printer Size: 500 x 500 x 590 mm (20.0 x 20.2 x 21.0 Inches)

Shipping Carton: 590 x 590 x 410 mm (23.2 x 23.2 x 26.1 Inches)

Gross Weight: 26.5 Kg (58 lbs) ● Net Weight: 20.5 Kg (45.2 lbs)

Print Nozzle Diameter: 0.4 mm ● Filament Diameter: 1.75 mm

Max Print Temperature: 250°C ● Max Hot Bed Temp: 100°C (212°F)

Layer Thickness: 0.1 to 0.3 mm (.008 inches) ● Print Accuracy: +/- 0.1 mm



Neo Crucible

## Sermoon D1 is Engineered for Materials up to 250°C

### Filament Characteristics

|                | Group 1 Filaments |                 | Group 2 Filaments |              |              | Group 3 Filaments |               |                 |                    |                 |
|----------------|-------------------|-----------------|-------------------|--------------|--------------|-------------------|---------------|-----------------|--------------------|-----------------|
| Brand Material | Creality CR-PLA   | Creality CR-TPU | Creality CR-PETG  | Creality ABS | PolyLite ASA | PolyMax PC        | PolyMax PC-FR | PolyMide PC/ABS | PolyMide Nylon 6/6 | PolyMide PA6-GF |
| Description    | Versatile         | Flexible        | Versatile         | Strong       | Strong       | Useful            | Special       | Tough           | Tough              | Tough           |
| Colors         | Many              | Many            | Many              | Some         | Some         | Limited           | Limited       | Limited         | Limited            | Gray            |
| Ease of Use    | 9                 | 8               | 7                 | 6            | 5            | 5                 | 5             | 5               | 5                  | 4               |
| Print Temp     | >190°C            | >210°C          | >230°C            | >250°C       | >250°C       | >260°C            | <260°C        | >260°C          | >280°C             | >280°C          |
| Durability     | 4                 | 7               | 5                 | 4            | 3            | 9                 | 8             | 10              | 8                  | 10              |
| Heat Resist    | 3                 | 2               | 6                 | 7            | 7            | 8                 | 8             | 8               | 9                  | 10              |
| Rigidness      | 5                 | 1               | 5                 | 6            | 7            | 7                 | 9             | 7               | 7                  | 10              |
| Weather        | 3                 | 7               | 4                 | 4            | 9            | 5                 | 5             | 5               | 4                  | 4               |
|                |                   |                 |                   |              |              | Reinforced        | UL94-VO       | Blend           |                    | Glass Fill      |

## Creality Pro Line-Up

Ask for Volume Discounts

**CR-5 Pro**

Up To 260°C

Print Volume 25,650 cm

**CR-5 Pro H**

Up To 300°C

Print Volume 25,650 cm

**CR-3040 Pro**

Up To 280°C

Print Volume 36,000 cm<sup>3</sup>

**CR-5060 Pro**

Up To 300°C

Print Volume 150,000 cm<sup>3</sup>

www.neocrucible.com ● 4769 E Wesley Drive ● Anaheim CA 92807 ● (888) 831-9336

Creality Authorized USA Distributor and Repair Facility