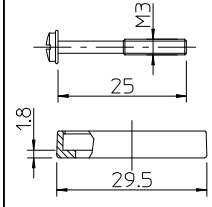
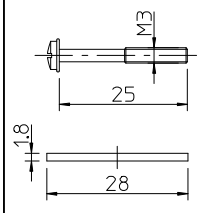


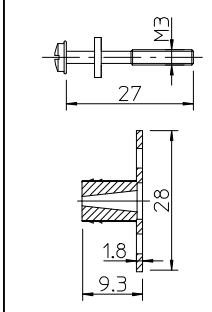
Screw M3x25
and Profile Gasket
Qty 2
(See sheet 2)



Screw M3x25
and Flat Gasket
Qty 2
(See sheet 2)



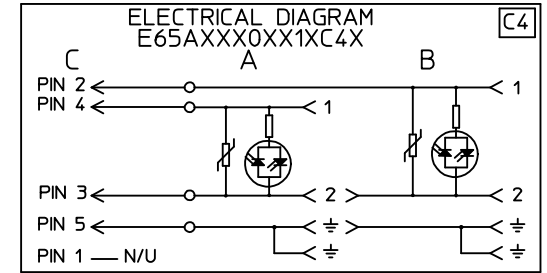
Screw M3x27
with Grommet
& Integrated Gasket
Qty 2
(See sheet 2)



PART NUMBER MATRIX

E	6	5	A	X	X	X	0	X	X	1	X	X	X	X
E65-Form A (18mm contact spacing)		Number of poles: A-M12 straight		Cable type: N-PVC K-CEI P-PUR A-PVC CSA-UL B-PUR CSA-UL	Cable cross section area: 2x0.5 mm ² (20AWG) 3x0.75 mm ² (18AWG)	Head colour: N-Black A-CSA-UL Black	L - Cable length: 0-M12 moulded on the DIN head	L1 - Distance between the two head in cm 13-130mm	Earth pin location: 1-16/M12	Gasket+screws: 1-NBR profile gasket+screw 2-NBR flat gasket+screw 3-Silicon profile gasket+screw 4-Silicon flat gasket+screw P-NBR integrated gasket+screw (IP67)	Internal circuit type	Supply voltage and LED colour: 1 - 5-Red LED A - E-Green LED G - M-Amber LED		

EXAMPLE: E65A12N01311C42



M12 Male 4 Pole

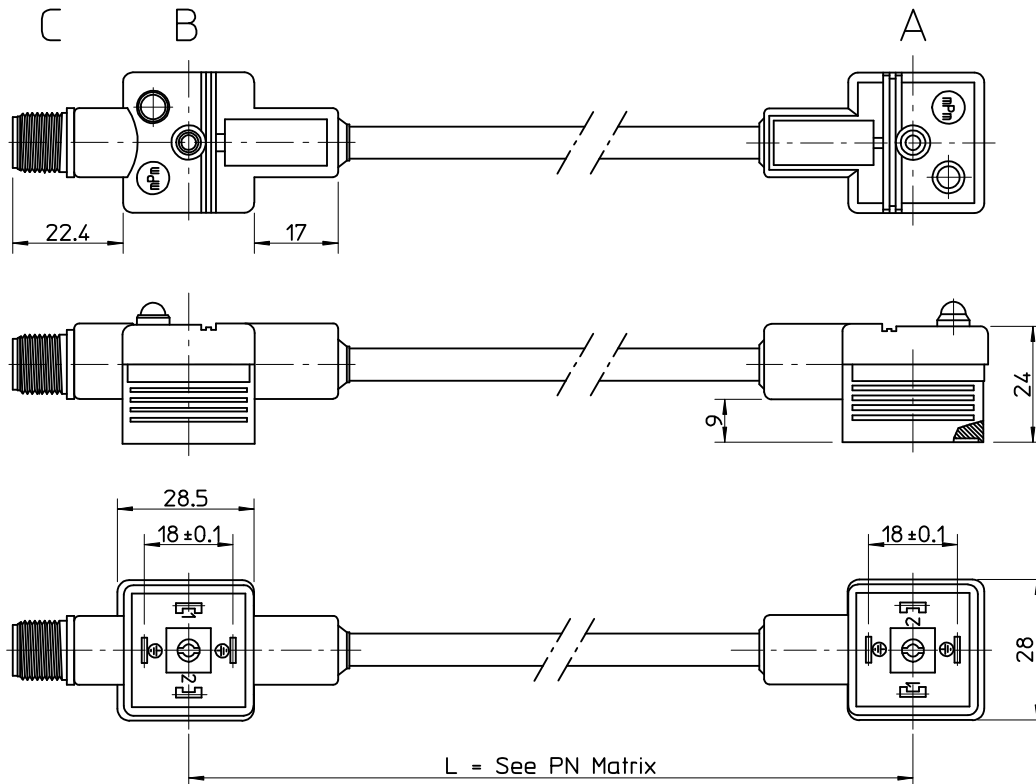
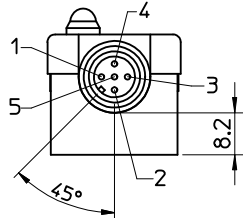


Table 1

Molex PN	Engineering No.	L1 [mm]
1210550041	E65A18N04211C4H	420
1210550165	E65A12N01311C42	130
1210550173	E65A12N04011C4H	400
1210550195	E65A12N02011C4H	200
1210550259	E65AB2A04011C4H	400

Table of length tolerances [mm]

Over	Up to and including	Tolerance
0	1000	±20
1000	3000	±30
3000	5000	±40
5000	10000	±50
10000	15000	±100
15000	20000	±150
20000		±L/100

Notes:
1. Dimensions without tolerance are referential.

<p>ORIGINAL RELEASE EC NO: IPG2016-0461 DRWN: JMARSZALEK 2014/03/19 CHKD: APPR: MIWASIECZKO 2015/09/28</p>	<p>QUALITY SYMBOLS ▽=0 ◁=0</p>	<p>GENERAL TOLERANCES (UNLESS SPECIFIED)</p>		<p>DIMENSION STYLE MM ONLY</p>		<p>SCALE -</p>	<p>DESIGN UNITS METRIC</p>	<p>THIRD ANGLE PROJECTION</p>																				
		<table border="1"> <thead> <tr> <th></th> <th>mm</th> <th>INCH</th> </tr> </thead> <tbody> <tr> <td>4 PLACES</td> <td>± ---</td> <td>± ---</td> </tr> <tr> <td>3 PLACES</td> <td>± ---</td> <td>± ---</td> </tr> <tr> <td>2 PLACES</td> <td>± ---</td> <td>± ---</td> </tr> <tr> <td>1 PLACE</td> <td>± ---</td> <td>± ---</td> </tr> <tr> <td>0 PLACE</td> <td>± ---</td> <td>± ---</td> </tr> </tbody> </table>			mm	INCH	4 PLACES	± ---	± ---	3 PLACES	± ---	± ---	2 PLACES	± ---	± ---	1 PLACE	± ---	± ---	0 PLACE	± ---	± ---	<p>DRAWN BY JMARSZALEK</p>		<p>DATE 2014/03/19</p>	<p>TITLE E65AXXX0XX1XXXX DUAL DIN FORM A WITH M12</p>			
			mm	INCH																								
		4 PLACES	± ---	± ---																								
3 PLACES	± ---	± ---																										
2 PLACES	± ---	± ---																										
1 PLACE	± ---	± ---																										
0 PLACE	± ---	± ---																										
<p>ANGULAR ±---°</p>		<p>APPROVED BY MIWASIECZKO</p>		<p>DATE 2015/09/28</p>		<p>DOCUMENT NO. SD-121055-009</p>																						
<p>DRAFT WHERE APPLICABLE MUST REMAIN WITHIN DIMENSIONS</p>		<p>SEE TABLE 1</p>		<p>MATERIAL NO.</p>		<p>SHEET NO. 1 OF 1</p>																						