

# M.243 | Bridge handles

Duroplast



- 1
- 2
- 3
- 4
- 5
- 6
- 7
- 8
- 9
- 10
- 11
- 12
- 13
- 14
- 15
- 16
- 17
- 18

## MATERIAL

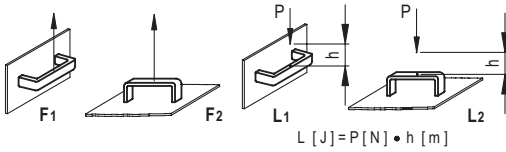
Phenolic based (PF) Duroplast, black colour, glossy finish.

## STANDARD EXECUTION

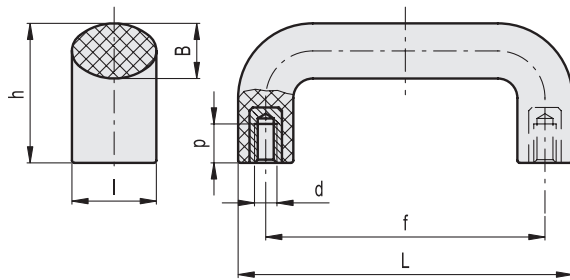
Brass bosses, threaded blind holes.

## TECHNICAL DATA

Tensile stress and impact strength: the values F1, F2, L1 and L2 indicated in the table were obtained during breaking tests carried out with the appropriate dynamometric equipment under the test conditions shown in the figure with ambient temperature.



ELESA Original design



Conversion Table	
1 mm = 0,039 inch	
L	
mm	inch
103	4.05
138	5.43
198	7.80

METRIC

Code	Description	L	f	d6H	h	B	l	p	F1 [N]	F2 [N]	L1 [J]	L2 [J]	⚖️
36501	M.243/100	103	86±0.5	M6	43	17	26	12	2500	2500	5	6	85
36601	M.243/140	138	117±0.5	M8	54	20	30	13	4000	5000	6	10	138
36701	M.243/200	198	179±1	M8	62	20	30	13	3000	2000	7	8	185

Lift & Pull handles