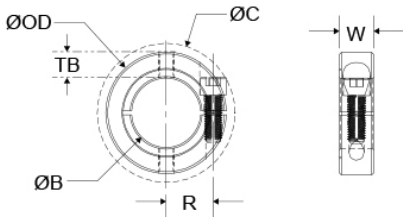




OH-CL-24-F

Ruland OH-CL-24-F, 1 1/2" Shaft Collar With OD Holes, Black Oxide Steel, One-Piece Clamp Style, 2 3/8" OD, 0.563" Width



*Additional hardware NOT included

Description

Ruland OH-CL-24-F is a one-piece shaft collar with a 1.5000" bore, 2 3/8" OD, and 0.563" width. It has OD flats and tapped holes for mounting shaft collars to each other or adjacent components. The clamp style design does not mar the shaft, is easy to remove, and is indefinitely adjustable. OH-CL-24-F is commonly used for guiding, spacing, stopping, mounting, and component alignment. Equipment manufacturers benefit from the tightly controlled face to bore perpendicularity (TIR of ? .002"). Perpendicularity is critical for alignment when the shaft collar is used as a load bearing face, mechanical stop, or for mounting components such as gears or bearings. Proprietary processes have been developed by Ruland to maintain superior fit, finish, and holding power. OH-CL-24-F is stamped with the Ruland name and bore size for ease of identification. Forged screws test beyond ANSI standards to ensure maximum holding power. OH-CL-24-F is manufactured from solid bar stock sourced from select North American mills and machined to a fine burr free finish. Ruland uses 1215 lead-free steel with a proprietary black oxide finish that produces a fine glossy finish while increasing holding power and resisting corrosion. OH-CL-24-F is RoHS3 and REACH compliant and manufactured in our Marlborough, MA factory under strict controls using proprietary processes.

Product Specifications

Bore (B)	1.5000 in	Bore Tolerance	+0.0020 in / +0.0005 in
Outer Diameter (OD)	2 3/8 in	Clearance Diameter (C) MAX	2.578 in
Width (W)	0.563 in	Width Tolerance	+0.003 in / -0.010 in
Threaded Mounting Hole	1/4-28	Through to Bore TB	0.43 in
Recommended Shaft Tolerance	+0.0000 in / -0.0005 in	Forged Clamp Screw	1/4-28
Screw Material	Alloy Steel	Hex Wrench Size	3/16 in
Screw Finish	Black Oxide	Seating Torque	170 lb-in
Screw Location (R)	0.984 in	Number of Screws	1 ea
Material Specification	1215 Carbon Steel Bar	Temperature	-40°F to 350°F (-40°C to 176°C)
Finish Specification	Hot Process Black Oxide, Impregnated with Naphthenic Oil, Centrifugally Dried	Manufacturer	Ruland Manufacturing
Country of Origin	USA	Weight (lbs)	0.392400
UPC	634529220290	Tariff Code	8483.60.8000
UNSPC	31162811		
Note 1	This product has been discontinued as a standard item. Please inquire for special pricing.		
Note 2	Additional mounting hardware not included.		
Prop 65	<p>⚠️WARNING This product can expose you to the chemical Ethylene Thiourea, known to the State of California to cause cancer and birth defects or other reproductive harm. For more information go to www.P65Warnings.ca.gov.</p>		

Installation Instructions

1. Use the OH-CL-24-F one-piece shaft collar as it is received.
2. Wipe the bore clean.
3. Apply a thin coat of light oil to the shaft.
4. Place the collar onto the desired shaft location and tighten it using a 3/16 in hex wrench until a slight resistance is felt.
5. Wring collar into its final position and tighten the screw to the full recommended seating torque of 170 lb-in using a 3/16 in torque wrench.