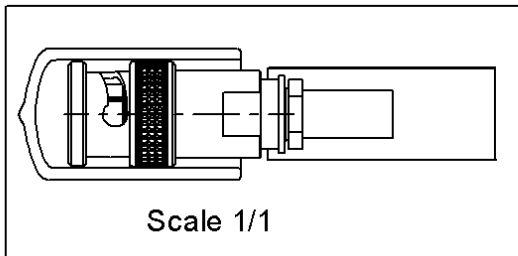
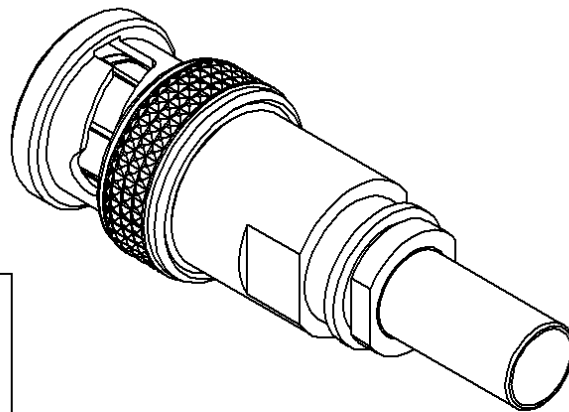
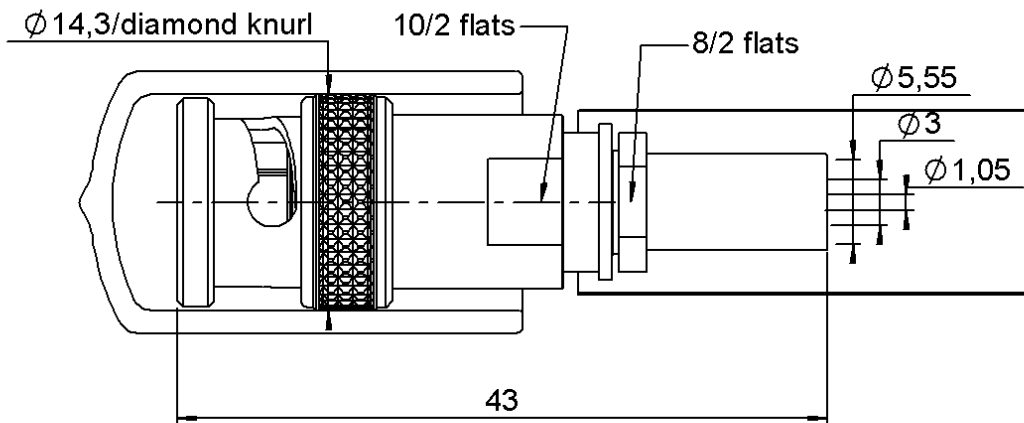


**STRAIGHT PLUG CRIMP TYPE**

**R141.097.000**

**CABLE 5/50 D**

Series : **BNC**



All dimensions are in mm.



COMPONENTS	MATERIALS	PLATINGS ( $\mu\text{m}$ )
BODY	BRASS	NICKEL 2
CENTER CONTACT	BRASS	GOLD 0.5 OVER NICKEL 2
OUTER CONTACT	-	-
INSULATOR	PTFE	-
GASKET	SILICONE RUBBER	-
OTHERS PARTS	-	-
-	-	-
-	-	-

Issue : 1435 D

In the effort to improve our products, we reserve the right to make changes judged to be necessary.



**STRAIGHT PLUG CRIMP TYPE**

**R141.097.000**

**CABLE 5/50 D**

Series : BNC

**PACKAGING**

**SPECIFICATION**

ASN-E0460 F01

**CABLE ASSEMBLY**

Standard	Unit	Other
<b>1</b>	<b>'W' option</b>	<b>Contact us</b>

**ELECTRICAL CHARACTERISTICS**

Stripping	a	b	c	d	e	f
mm	9,00	9,00	23,0	0,00	0,00	0,00

Impedance	<b>50</b>	$\Omega$
Frequency	<b>0-4</b>	GHz
VSWR	<b>1.3 + 0,0000</b>	x F(GHz) Maxi
Insertion loss	<b>0.115</b>	$\sqrt{F}$ (GHz) dB Maxi
RF leakage	- ( <b>57</b> )	- F(GHz) dB mini
Voltage rating	<b>500</b>	Veff Maxi
Dielectric withstanding voltage	<b>1500</b>	Veff mini
Insulation resistance	<b>5000</b>	M $\Omega$ mini

Assembly instruction :

Recommended cable(s)  
 RG 142  
 RG 142 FTX  
 RG 223  
 KX 23  
 RG 400

**MECHANICAL CHARACTERISTICS**

Cable retention

- pull off	<b>220</b>	N mini
- torque	<b>NA</b>	N.cm

Center contact retention		
Axial force – Mating end	<b>27</b>	N mini
Axial force – Opposite end	<b>27</b>	N mini
Torque	<b>NA</b>	N.cm mini

**TOOLING**

Part Number	Description	Hexagon
R282246000	CRIMPING DIES M22520/5-05	5.41
282291	CRIMPING TOOL M22520/1-01	2x4 (pos. 7)
282997	POSITIONER FOR TOOL 282.291(M22520/1-13)	rouge
R282293000	CRIMPING TOOL M22520/5-01	-

Recommended torque		
Mating	<b>NA</b>	N.cm
Panel nut	<b>NA</b>	N.cm
Clamp nut	<b>170</b>	N.cm
A/F clamp nut	<b>8,0000</b>	mm

Mating life	<b>500</b>	Cycles mini
Weight	<b>16,0880</b>	g

**ENVIRONMENTAL**

Operating temperature	<b>-65/+165</b>	$^{\circ}$ C
Hermetic seal	<b>NA</b>	Atm.cm3/s
Panel leakage	<b>NA</b>	

**OTHERS CHARACTERISTICS**

Issue : 1435 D

In the effort to improve our products, we reserve the right to make changes judged to be necessary.

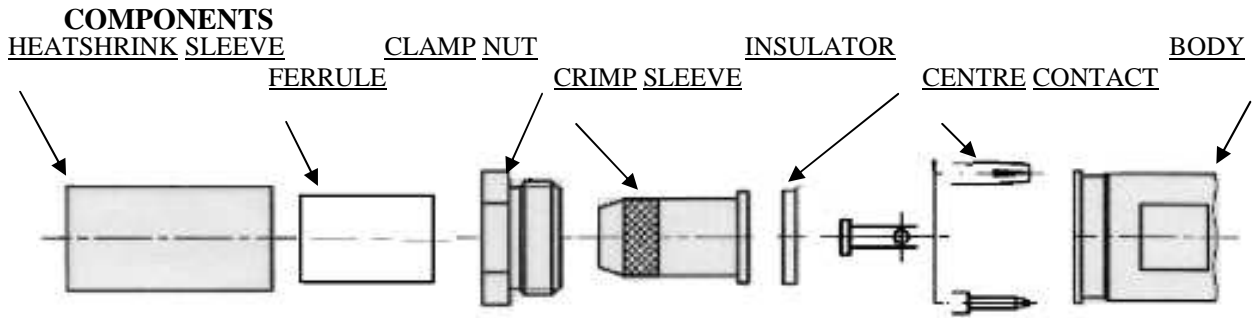


**STRAIGHT PLUG CRIMP TYPE**

**R141.097.000**

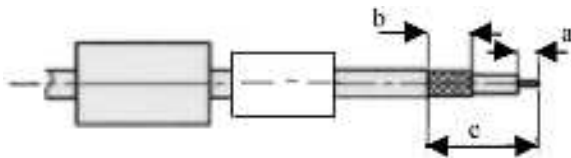
**CABLE 5/50 D**

Series : BNC



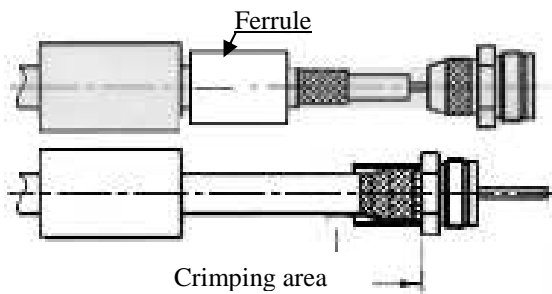
1

Slide onto the cable the heatshrink and the ferrule.  
Strip the cable.



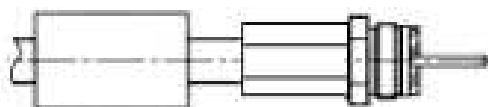
2

Slide the clamp nut onto the crimp sleeve.  
Slide sub-assembly under the braid.  
Slide ferrule over the braid against clamp nut. (In direction F)  
Crimp the ferrule with crimping tool + dies



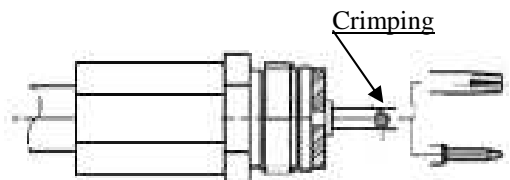
3

Cut the dielectric flush to crimp sleeve.  
Mount insulator against crimp sleeve.



4

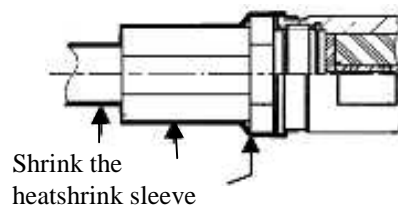
Slide the centre contact onto the cable inner conductor against insulator.  
Crimp centre contact with the crimping tool and the positioner.



Heatshrink sleeve not shown

5

Screw sub-assembly into the connector body.  
(recommended coupling see the connector TDS)  
Slide sleeve over ferrule and heatshrink sleeve in the place.



Issue : 1435 D

In the effort to improve our products, we reserve the right to make changes judged to be necessary.

