



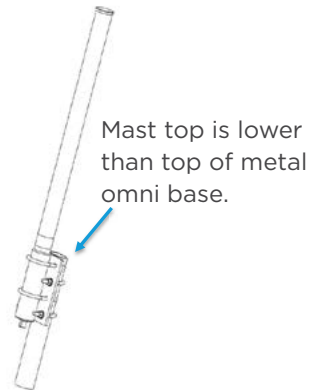
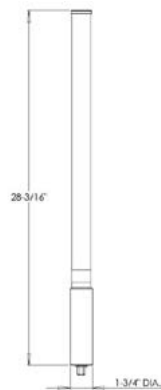
S3307BPNF

3.3-3.8 GHz

Assembly and Installation Instructions

SPECIFICATIONS

Antenna Model	S3307BPNF
Operating Frequency (GHz)	3.3-3.8
Peak Gain (dBi)	9.0
Vertical Plane 3 dB Beamwidth	8°
Azimuth Plane 3 dB Beamwidth	Omni
Weight - kg (lb.)	0.52 (1.15)
Height - cm (in.)	71.63 (28.2)
Polarization	Linear Vertical
VSWR - Max	2.0:1
Max Power - Ambient 25°C (W)	10
Enclosure	Polycarbonate
RF Connector	N(f)



SAFETY

This antenna is designed to mount to an outdoor pole or mast. To prevent personal injury or equipment damage, the antenna must be securely mounted per the instructions.

LOCATION

The location of the antenna is important. Best performance is achieved when transmit and receive antennas are mounted at the same height and in a direct line of sight with no obstructions. If this is not possible and reception is poor, try different mounting positions to optimize reception.

APPLICATION

The antenna has a female N-connector which provides great flexibility during installation. Weatherproof the connectors and attach the feedline to the mast with cable ties or tape.

CONNECTOR ATTACHMENT

The M8 metric U-bolts mounting bracket accomodates a 3.2-5.4 centimeter (1.25"-2.125") mast. Make sure that the mast does not extend above the metal base on the omni. If multiple antennas are mounted on the same mast, it is important to place this antenna at least 30 centimeters (12 inches) from the others to keep interaction to a minimum.

TE TECHNICAL SUPPORT CENTER

USA:	+1 (800) 522-6752
Canada:	+1 (905) 475-6222
Mexico:	+52 (0) 55-1106-0800
Latin/S. America:	+54 (0) 11-4733-2200
Germany:	+49 (0) 6251-133-1999
UK:	+44 (0) 800-267666
France:	+33 (0) 1-3420-8686
Netherlands:	+31 (0) 73-6246-999
China:	+86 (0) 400-820-6015

te.com

TE, and TE connectivity (logo) are trademarks owned or licensed by the TE Connectivity Ltd. family of companies. All other logos, products and/or company names referred to herein might be trademarks of their respective owners.

The information given herein, including drawings, illustrations and schematics which are intended for illustration purposes only, is believed to be reliable. However, TE Connectivity makes no warranties as to its accuracy or completeness and disclaims any liability in connection with its use. TE Connectivity's obligations shall only be as set forth in TE Connectivity's Standard Terms and Conditions of Sale for this product and in no case will TE Connectivity be liable for any incidental, indirect or consequential damages arising out of the sale, resale, use or misuse of the product. Users of TE Connectivity products should make their own evaluation to determine the suitability of each such product for the specific application.

TE Connectivity warrants to the original end user customer of its products that its products are free from defects in material and workmanship. Subject to conditions and limitations TE Connectivity will, at its option, either repair or replace any part of its products that prove defective because of improper workmanship or materials. This limited warranty is in force for the useful lifetime of the original end product into which the TE Connectivity product is installed. Useful lifetime of the original end product may vary but is not warranted to exceed one (1) year from the original date of the end product purchase.

©2022 TE Connectivity. All Rights Reserved.

08/22 Original