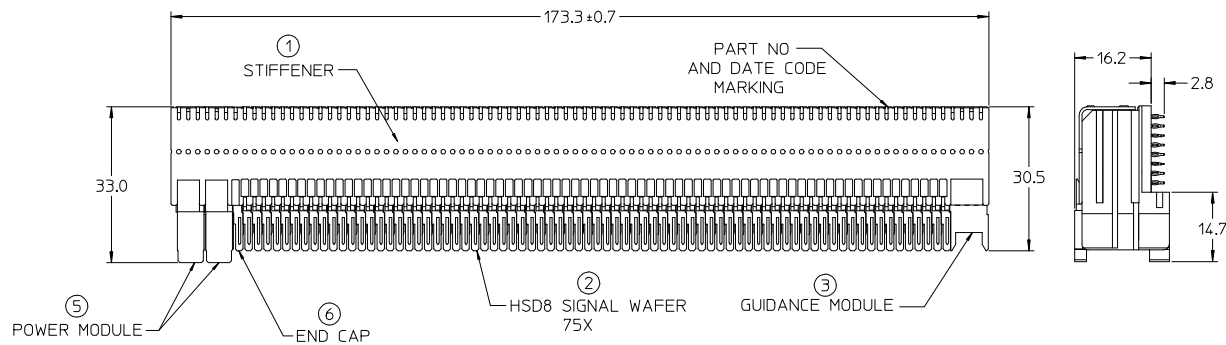
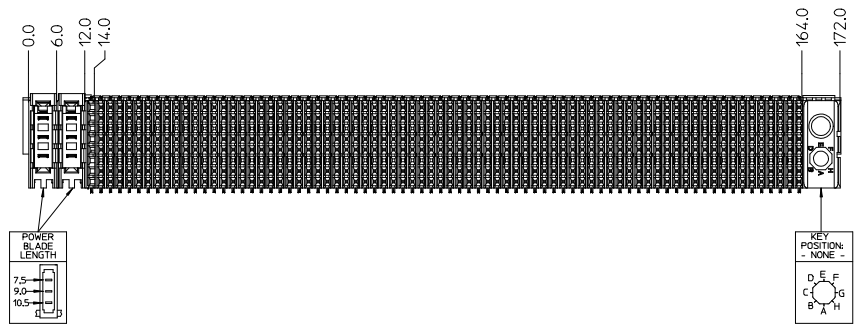


CUSTOMER: ENTERA SYSTEMS

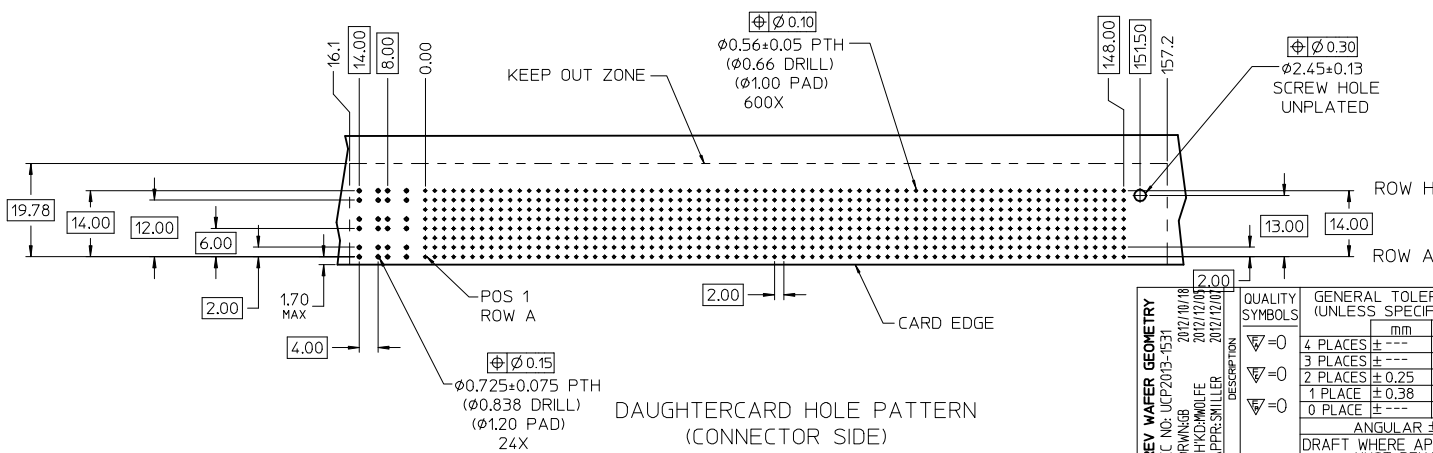


- NOTES:
1. MATERIALS: HOUSING - LIQUID CRYSTAL POLYMER (LCP), GLASS-FILLED, UL 94V-0.
TERMINALS - HIGH PERFORMANCE COPPER ALLOY.
STIFFENER - STAINLESS STEEL.
 2. FINISH: SELECTIVE GOLD (Au) IN CONTACT AREA,
0.76 micrometers MINIMUM THICKNESS;
SELECTIVE MATTE TIN (Sn) ON PCB TAILS,
NICKEL (Ni) UNDERPLATE OVERALL.
 3. PRODUCT CONFORMS TO MOLEX PRODUCT SPECIFICATION PS-74031-999.
 4. PARTS ARE PACKAGED PER PK-70873-5041.
MOUNTING SCREWS WILL BE BAGGED WITH EACH CONNECTOR.
 5. REFER TO MOLEX DOCUMENT SD-74681-002 FOR ADDITIONAL DETAIL ON THE HSD SIGNAL WAFER.
 6. REFER TO MOLEX DOCUMENT SD-74037-006 FOR ADDITIONAL DETAIL ON THE HSD GUIDANCE MODULE.
 7. REFER TO MOLEX DOCUMENT SD-75885-002 FOR ADDITIONAL DETAIL ON THE HSD POWER MODULE.
 8. REFER TO MOLEX DOCUMENT SD-74038-003 FOR ADDITIONAL DETAIL ON THE HSD END CAP.
 9. PRODUCT CONFORMS TO CLASS B REQUIREMENTS OF MOLEX COSMETIC SPECIFICATION PS-45499-002.



LEAD-FREE
PLATING

ITEM	PART NUMBER	DESCRIPTION	QTY
1	74046-0173	STIFFENER	1
2	74681-1001	HSD8 SIGNAL WAFER, LF	75
3	74037-0008	POLARIZING/GUIDE MODULE	1
4	73726-0000	MOUNTING SCREW	1
5	75885-8321	POWER MODULE, LF	2
6	74038-1001	END CAP	1



REV WAFER GEOMETRY EC NO: UCP2013-1531 DRAWING: CHYD/MOLEX APPROVED BY: MILLER DATE: 2012/10/18 DATE: 2012/12/09 DATE: 2012/12/09	QUALITY SYMBOLS ▽=0 ▽=0 ▽=0	GENERAL TOLERANCES (UNLESS SPECIFIED) <table border="1"> <thead> <tr> <th></th> <th>mm</th> <th>INCH</th> </tr> </thead> <tbody> <tr> <td>4 PLACES</td> <td>±---</td> <td>±---</td> </tr> <tr> <td>3 PLACES</td> <td>±---</td> <td>±---</td> </tr> <tr> <td>2 PLACES</td> <td>±0.25</td> <td>±---</td> </tr> <tr> <td>1 PLACE</td> <td>±0.38</td> <td>±---</td> </tr> <tr> <td>0 PLACE</td> <td>±---</td> <td>±---</td> </tr> </tbody> </table>		mm	INCH	4 PLACES	±---	±---	3 PLACES	±---	±---	2 PLACES	±0.25	±---	1 PLACE	±0.38	±---	0 PLACE	±---	±---	DIMENSION STYLE MM ONLY	SCALE 2:1	DESIGN UNITS METRIC	THIRD ANGLE PROJECTION
		mm	INCH																					
	4 PLACES	±---	±---																					
	3 PLACES	±---	±---																					
2 PLACES	±0.25	±---																						
1 PLACE	±0.38	±---																						
0 PLACE	±---	±---																						
DRAFT WHERE APPLICABLE MUST REMAIN WITHIN DIMENSIONS		MATERIAL NO. 74680-0277	DOCUMENT NO. SD-74680-277	TITLE VHDM 8 ROW HSD, LF DAUGHTERCARD SALES DRAWING																				
ANGULAR ±1/2°		MOLEX		SHEET NO. 1 OF 1																				
THIS DRAWING CONTAINS INFORMATION THAT IS PROPRIETARY TO MOLEX INCORPORATED AND SHOULD NOT BE USED WITHOUT WRITTEN PERMISSION																								