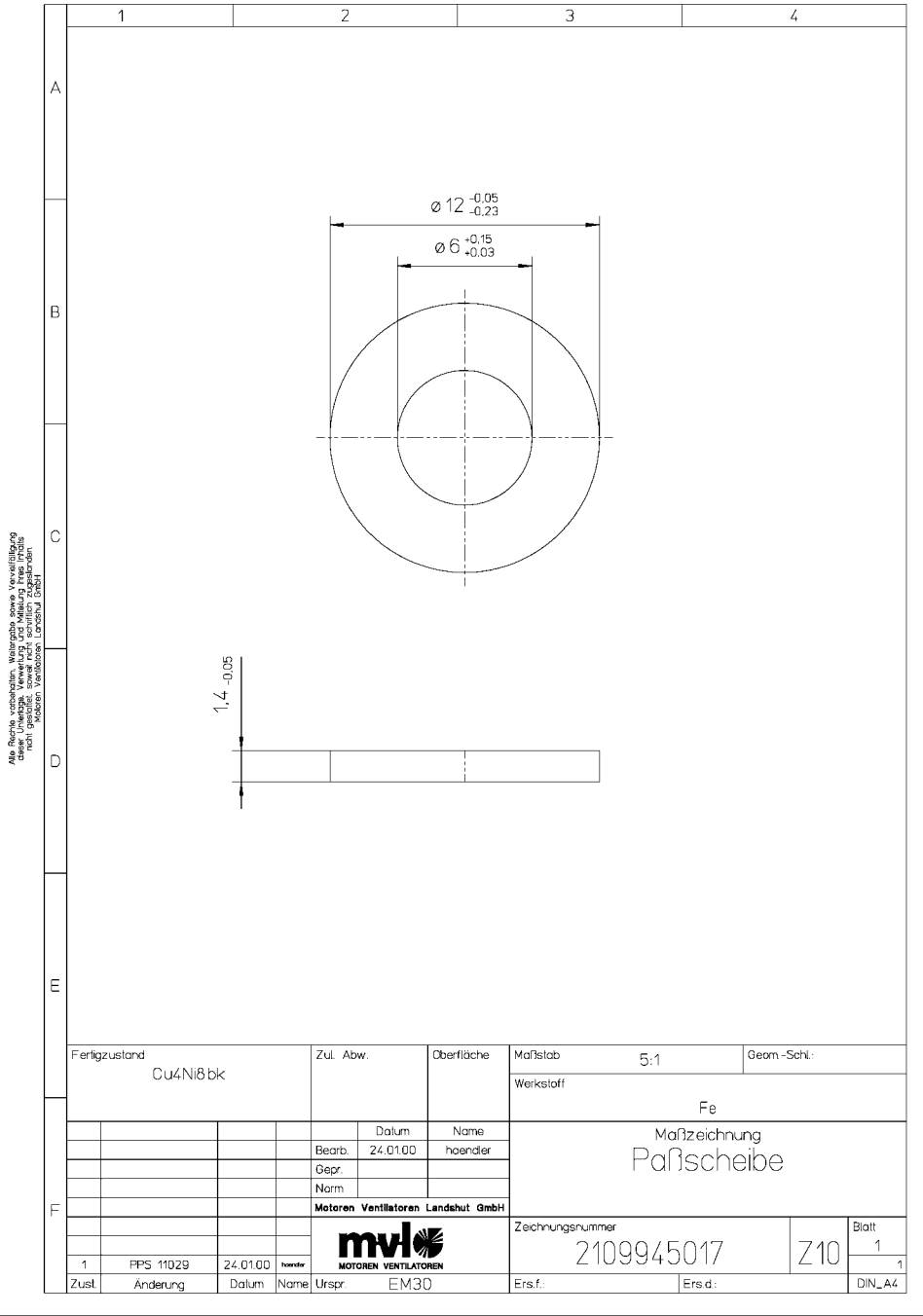


Product Change Notice

| | |
|-------------------------|---|
| Date: | July 1, 2021 |
| Overview: | Part number consolidation / correction from part numbers 21099.45023 and 21099.45017 to 21099.45017 only |
| Reason for Change: | There were two part numbers for the same washer in our system, so we are consolidating to the one current part number |
| Affected Part No(s): | Part number 21099.45023 is inactive, effective immediately. Please update your systems to reflect part number 21099.45017 only to order this washer |
| Design Change Detail: | The only change is to the ordering part number; please use part number 21099.45017 to order this washer moving forward |
| Effective Date: | June XX, 2021 |
| Last Time Buy Deadline: | N/A |
| Pricing: | Per current pricer |
| ebm-papst employee: | Jeannine Zenobi |
| Attachments: | Drawing of part number 21099.45017 |
| Comments: | N/A |

| | | |
|--------------------------------|---------------------------|-------------------------------|
| Form No: 1274 | Quality Record - No | Page 1 of 1 |
| Rev. – Orig, Released 08/28/14 | Retention Period – 1 year | Dept. Owner – Sales/Marketing |



Alle Rechte vorbehalten. Weitergabe sowie Vervielfältigung
 dieser Urhebungs-Verwendungs- und Messung- Erzeugnisse
 nach dem Patentgesetz, Landespatentgesetz, Patentrecht
 sind ausdrücklich untersagt.

| | | | | | | |
|---|-----------|-----------|--------------------------------|-----------------------------------|--------------------------------|---------|
| Fertigzustand Cu4Ni8bk | | Zul. Abw. | Oberfläche | Maßstab 5:1 | Geom.-Schl. | |
| | | | | Werkstoff Fe | | |
| | | Datum | Name | Maßzeichnung Paßscheibe | | |
| | | Bearb. | 24.01.00 | | | hoender |
| | | Gepr. | | | | |
| | | Nam | | | | |
| Motoren Ventilatoren Landshut GmbH | | | | | | |
| | | | Zeichnungsnummer 2109945017 | | Blatt 1 1 | |
| 1 | PPS 11029 | 24.01.00 | hoender | | | |
| Zust | Anderung | Datum | Name | Urspr. EM30 | Ers.f. Ers.d. DIN_A4 | |

