

**NOTES:**

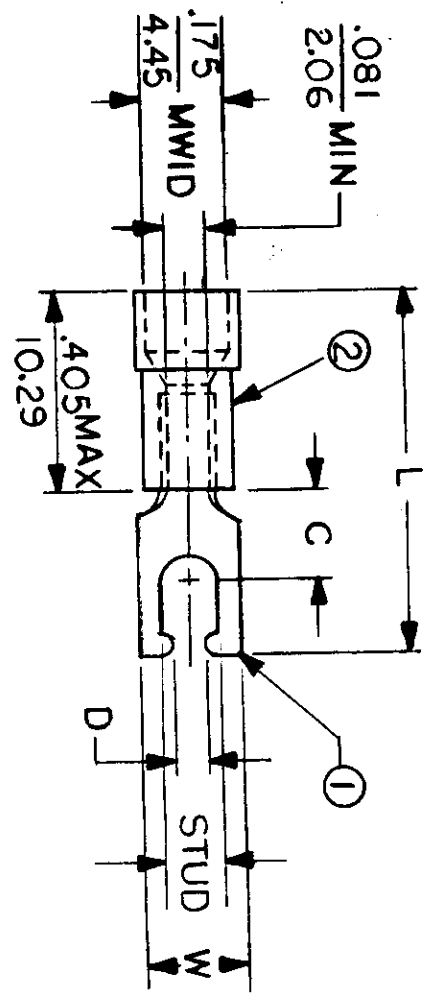
- ① MAT'L: COPPER (STOCK TKN.  $\frac{.031}{.79}$ )
- ② INSULATION: MOLDED PVC (BLUE)

STUD SIZES: ( $\pm .005$ )

- 02 = .094
- 04 = .119
- 06 = .146
- 08 = .173
- 10 = .198
- 14 = .265
- 56 = .328
- 38 = .390

"UL" LISTING #E32244  
 "CSA" LISTING #18689

ALL DIMENSIONS =  $\frac{\text{INCHES}}{\text{MM}}$



MWID = MAXIMUM WIRE  
 INSULATION DIAMETER  
 WIRE SIZE: 16 - 14 AWG  
 1.0 - 2.5MM<sup>2</sup>

PART NUMBER	"W" ±.010	"C" MIN.	"L" MAX.	"D" ±.005	AVAILABLE STUD SIZES	DIMENSIONAL TOLERANCES UNLESS OTHERWISE SPECIFIED		REFERENCE	SCALE:	NTS	DATE	TITLE:	DWG. NO.	A	CUSTOMER DWG.
						DEC.	ANG.								
BB-2193-	$\frac{.260}{6.60}$	$\frac{.235}{5.97}$	$\frac{.870}{2210}$	$\frac{.111}{2.82}$	06X						11.7.84	SNAP SPADE TONGUE TERMINAL 200 SERIES			
BB-2194-	$\frac{.290}{7.37}$	$\frac{.235}{5.97}$	$\frac{.880}{2235}$	$\frac{.137}{3.48}$	08X						11-13-84				
BB-2195-	$\frac{.328}{8.33}$	$\frac{.235}{5.97}$	$\frac{.930}{2362}$	$\frac{.163}{4.14}$	10X										

FILE NO. BB-CD-205-01

