

Specification Sheet

Part Number: 181-33017

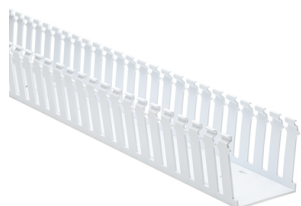
Strong fingers prevent unwanted breaking. Fingers are easily deflected outward, allowing ready positioning of the wires within the slotted wall duct.

Restricted opening design in the finger of the duct helps keep wires in place.

Restricted opening prevents unintended removal of wires and permits any individual wire to be traced without disconnection.

Supplied with mounting holes to streamline installation.

Optional covers enhance protection and appearance.



Slotted Wall Wiring Duct, 3" x 3", Non-Adhesive, PVC, White, 30ft/Box

Article Number 181-33017

Type SL3X3

Color White (WH)

Quantity Per box

Product Description Pro-Duct slotted wall wiring duct features break-away fingers which provide additional access for wire leads. Each section of the duct is provided with two score lines. The upper score line is used to break away fingers when a greater opening is required. The lower score line allows the sidewall to be smoothly cut for joints and Ts.

| | |
|----------------------------------|---|
| Short Description | Slotted Wall Wiring Duct, 3" x 3", Non-Adhesive, PVC, White, 30ft/Box |
| Global Part Name | SL3X3-PVC-WH |
| Length L (Imperial) | 6.0 |
| Length L (Metric) | 1.83 |
| Width W (Imperial) | 3.0 |
| Width W (Metric) | 76.2 |
| Height H (Imperial) | 3.07 |
| Height H (Metric) | 77.9 |
| Mounting Hole Centers (Imperial) | 4.0 |
| Material | Polyvinylchloride (PVC) |
| Material Shortcut | PVC |
| Halogen Free | No |
| UV Resistant (Yes/No) | No |
| Operating Temperature | +122°F (+50°C) |

| | |
|------------------------------|--|
| Reach Compliant (Article 33) | No |
| ROHS Compliant | Yes |
| Certification/Specification | CSA EN 50085-2-3_1A UL EN 50085-1:2005 + A1:2013 |
| UL Recognized (US) | Yes |
| Package Quantity (Imperial) | 30.0 |
| Package Quantity (Metric) | 9.14 |
| Customs Number | 3925900000 |

© 2023 HellermannTyton. All Rights Reserved.

[Contact Us](#) [RoHS/WEEE Compliance](#) [Disclaimer](#) [Terms and Conditions](#)