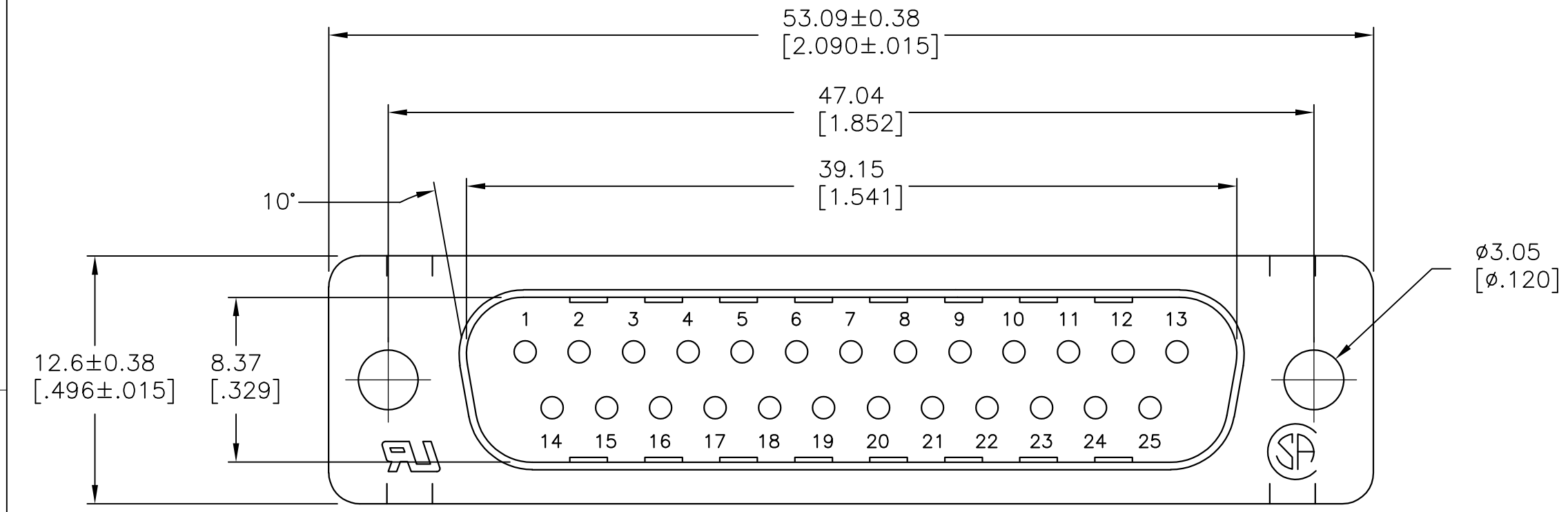
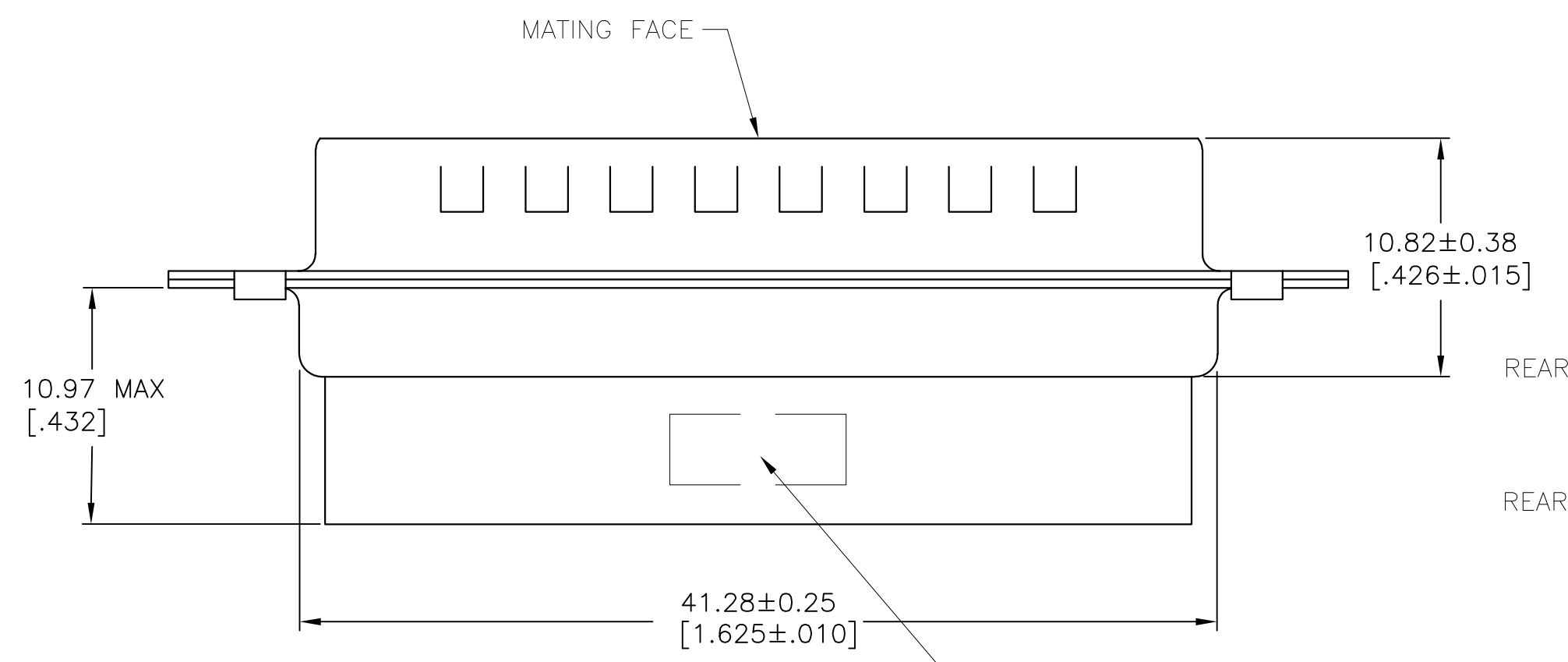


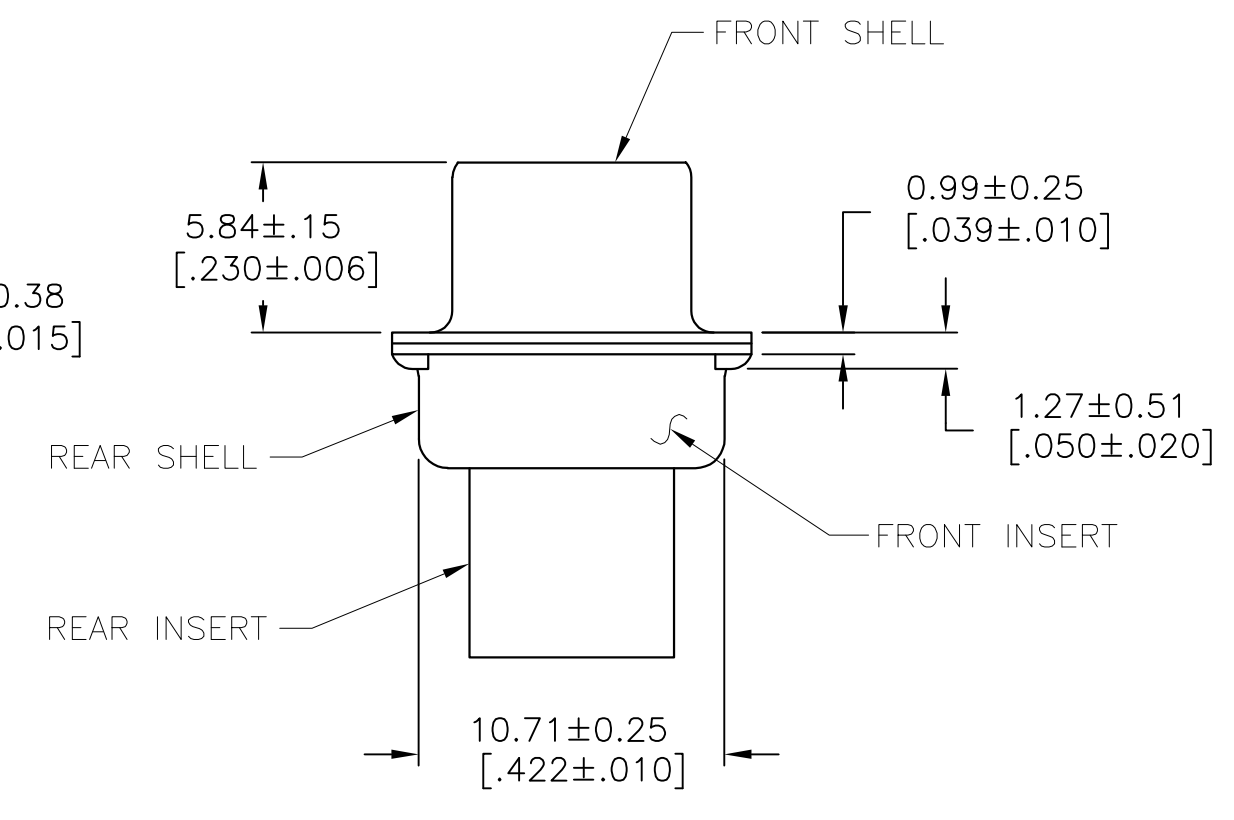
LOC	DIST	REVISIONS			
P	LTR	DESCRIPTION	DATE	OWN	APVD
GP	00	B	REVISED PER ECO-14-011808	09AUG2014	AP SB



- 1. INSERTS: GLASS-FILLED PBT OR GLASS-FILLED NYLON, UL94V-0 RATED. COLOR: BLACK  
SHELLS: CARBON STEEL.
- 2. SHELLS: 0.00254[.000100] MIN TIN OVER 0.00051[.000020] MIN NICKEL OVER 0.00254[.000100] MIN COPPER.
- 3. CONNECTOR ACCEPTS SIZE 20 DF PIN CONTACTS. RETENTION TINES ARE AN INTEGRAL PART OF INSERT.



TYCO, PART NO & DATE CODE, MARKED IN AREA INDICATED ON FAR SIDE



1888307-1  
 PART NUMBER

THIS DRAWING IS A CONTROLLED DOCUMENT.		DWN J.GERACE 28MAR06	TE Connectivity	NAME PLUG CONNECTOR, SIZE 3, 25 POS, AMPLIMITE HDP
DIMENSIONS: mm[INCHES]		CHK C.ROHDE 27AMR06		
TOLERANCES UNLESS OTHERWISE SPECIFIED:		APVD M.WALMSLEY 27MAR06		
0 PLC ± - 1 PLC ± - 2 PLC ± - 3 PLC ± 0.13[.005] 4 PLC ± ± 2° ANGLES		PRODUCT SPEC 108-40005 APPLICATION SPEC 114-40030		
MATERIAL	FINISH	WEIGHT	SIZE A2	CAGE CODE 00779
CUSTOMER DRAWING		SCALE 4:1	DRAWING NO G-1888307	RESTRICTED TO
		SHEET 1 OF 1	REV B	