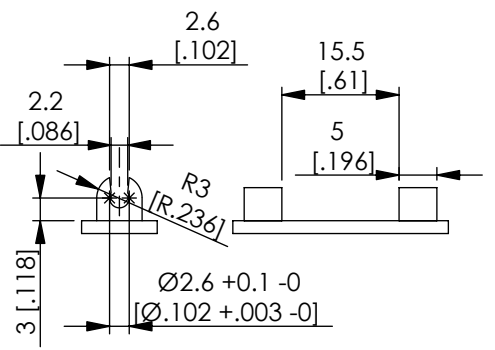


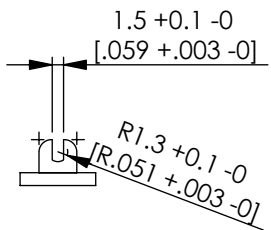
REV.	MODIFICATION.	DATE	DRN
01	NEW DRAWING	10/07/04	NJB
02	IMPERIAL DIMENSIONAL VALUES ADDED	06/09/04	NJB
03	ECN2006-049	20/02/06	OW
04	ECN2007-091	02/05/07	SF
05	CO2010162	27/03/08	SF



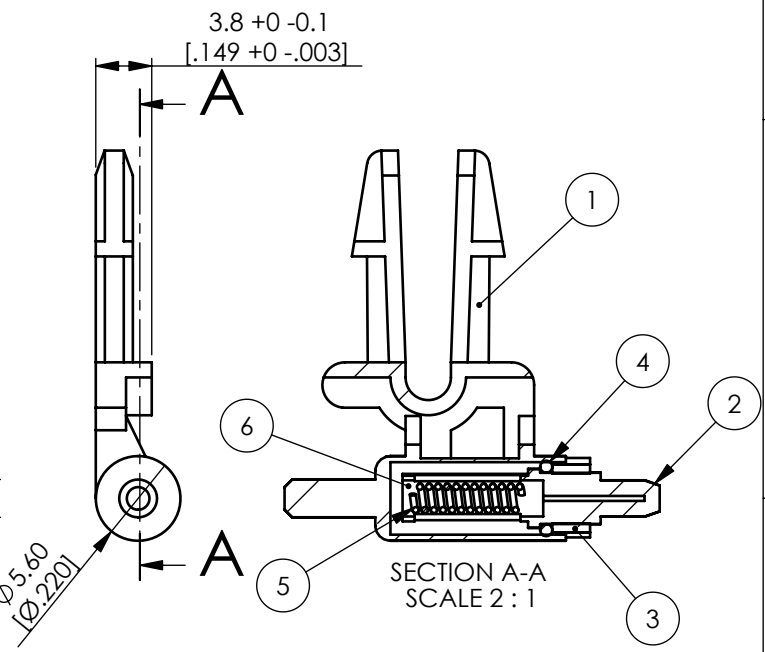
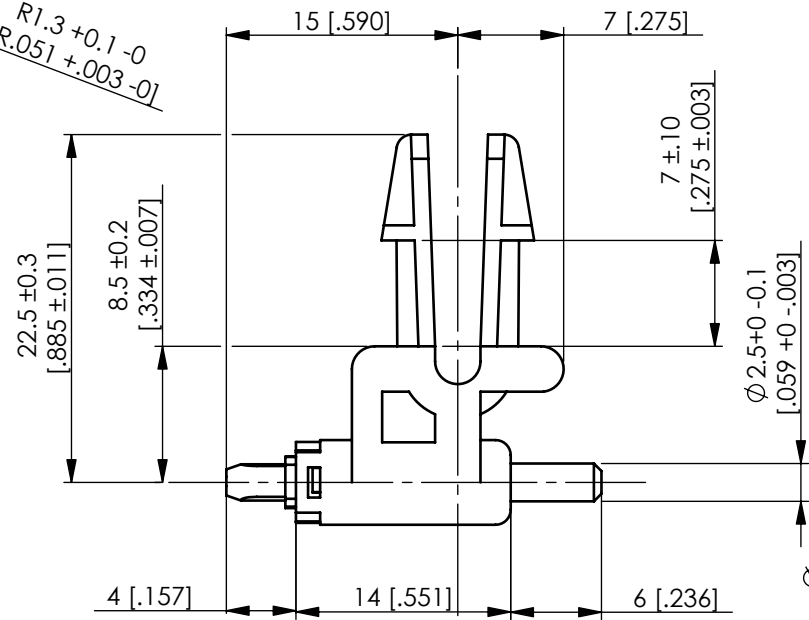
RECOMENDED SHAFT FIXTURE SHAPE

NOTES:

- 1a) METRIC PRIMARY UNITS:mm
- 1b) IMPERIAL SECONDARY UNITS: [inches]
- 2) LOAD TORQUE ON AXIS AT HORIZONTAL POSITION & 90° OPENING TIME, SEE TABLE.
- 3) DURABILITY:
 - 1 CYCLE = 90°- 0- 90°
 - WHEN OPERATED FOR 1 CYCLE REPEATEDLY THE CHANGE OF OPERATION TIME IS $\leq \pm 20\%$.
- 4) OPERATING TEMPERATURE: 0 TO 40°C.
- 5) STORAGE TEMPERATURE: -20°C TO 60°C.
- 6) HEAT CYCLE:
 - 1 CYCLE = 6 HOURS @ 60°C & 6 HOURS @ -20°C
 - AFTER 2 HEAT CYCLES THE CHANGE OF OPERATION TIME AT ROOM TEMPERATURE SHOULD BE $< \pm 20\%$.
- 7) REVOLUTION ANGLE 90°.
- 8) MAX REVOLUTION ANGLE: 130° $\pm 10^\circ$
- 9) COLOUR CODED NEXT TO INJECTION POINT TO IDENTIFY.



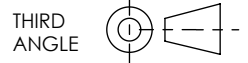
RECOMENDED HOLE SHAPE



INFORMATION CONTAINED IN THIS DOCUMENT IS CONFIDENTIAL TO RICHCO INTERNATIONAL Co. Ltd. AND MAY NOT BE DISCLOSED OR REPRODUCED IN WHOLE OR PART WITHOUT THEIR WRITTEN CONSENT.



GENERAL TOLERANCES ± 0.25 [0.010]
UNLESS OTHERWISE STATED
1 DECIMAL PLACE \pm
2 DECIMAL PLACES \pm
ANGULAR $\pm 1^\circ$



MATERIAL:		SEE TABLE		COLOUR:		SEE TABLE	
DESCRIPTION:				RAD-XX			
DRG No:		NPR No:		SHEET SIZE		A4	
04-073		2001-302					
DRN	DATE	CHKD	DATE	SCALE	SHEET No.		
OW	20/02/06	TC	20/02/06	NTS	1 OF 1		

CASE	PC	BLACK	161	1
SHAFT	PC	BLACK	161	2
CAP	POM	BLUE	160	3
O-RING	SILICON RUBBER	RED	296	4
SPRING	SWP-B	N/A	309	5
SILICONE OIL	SILICONE OIL	TRANSPARENT	209	6
COLOUR	N/A	N/A	239	7
MARKING				
PART NAME	MATERIAL	COLOUR	RMS No.	No.
RAD-30	RED	30 gf.cm	0.6 ± 0.4 sec	
RAD-25	WHITE	25 gf.cm	0.6 ± 0.4 sec	
RAD-20	NO MARKING	20 gf.cm	0.6 ± 0.4 sec	
PART NUMBER	COLOUR CODE	LOAD TORQUE	90° OPENING TIME	

