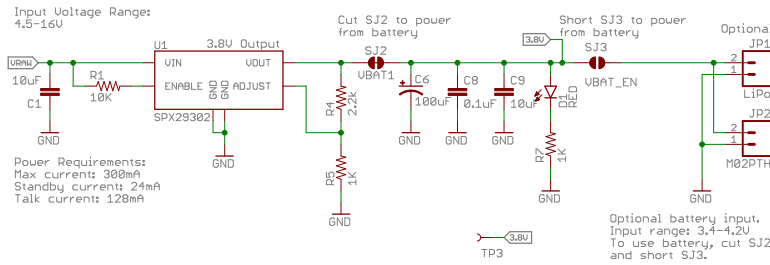
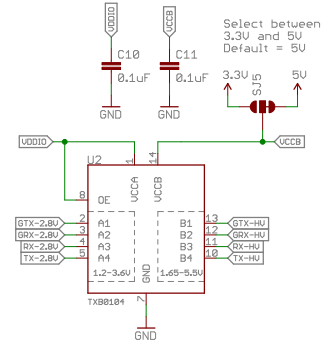


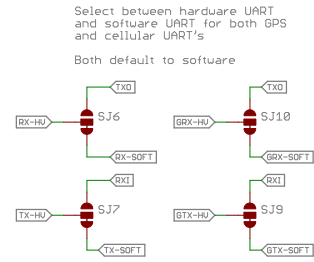
## Voltage Regulator



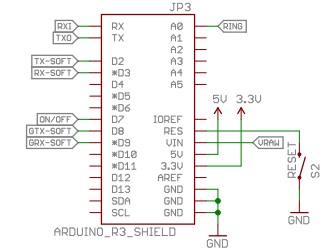
## Level Shifter



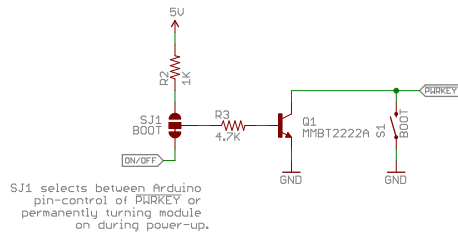
## UART Select



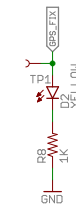
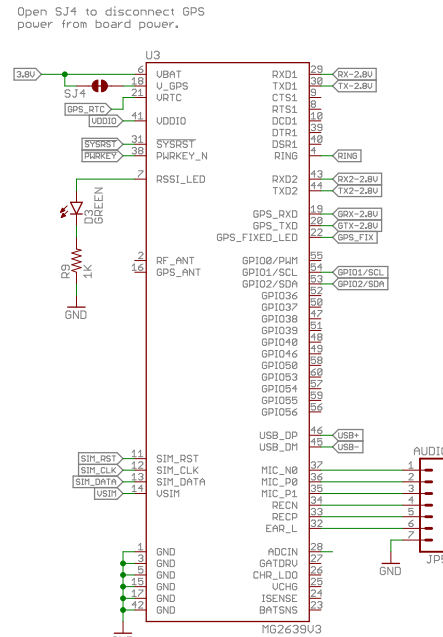
## Arduino Shield



## Boot Button

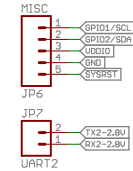


## MG2639 Cellular Module

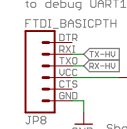


## Misc. Headers

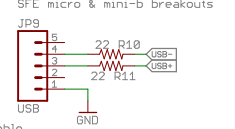
Top-left header breaks out I2C,  
UART2, VDDIO, GND and the  
cell module's reset pin.



FTDI Header to debug UART1

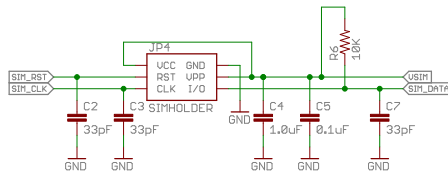


USB Header matches  
SFE micro & mini-b breakouts

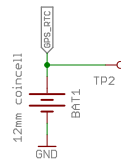


Short SJ8 to enable  
FTDI UCC to power high-  
side of level shifter.

## SIM Card



## GPS Battery



Released under the Creative Commons  
Attribution Share-Alike 4.0 License  
<https://creativecommons.org/licenses/by-sa/4.0/>

TITLE: MG2639 Cellular Shield\_v11

Design by: Nathan Seidle  
Jim Lindblom

REV:  
v11

Date: 5/7/2015 9:07:06 AM

Sheet: 1/1