



We've released two e-ink display for Arduino, the [Grove - Triple Color E-Ink Display 2.13"](#) and the [Grove - Triple Color E-Ink Display 1.54"](#), today we bring you the [2.13" Triple-Color E-Ink Display for Raspberry Pi](#) and the 2.7" Triple-Color E-Ink Display for Raspberry Pi. Actually, they can work as a pi hat, you just need to plug those displays into your Raspberry pi via the Raspberry pi GPIO header. The E-Ink communicates with the Raspberry pi with the 4-wire SPI interface.

At the same time, we have reserved a Grove I2C interface for using other I2C modules with this screen and a Grove digital interface which breakout two digital pin. We have added a voltage conversion module to the screen so that you can use both 3.3v and 5v modules. And with the two user buttons, you can switch between different images easily.

#### Note

Please note that this product does not contain a Raspberry Pi. If you need one, you can consider our [Raspberry Pi 3 Model B+](#) or [Raspberry Pi Zero](#)

If you are interested, you can click on the image below to view the different sizes of Arduino E-Ink or Raspberry Pi E-Ink.



Figure 1. Seeed E-Ink Series

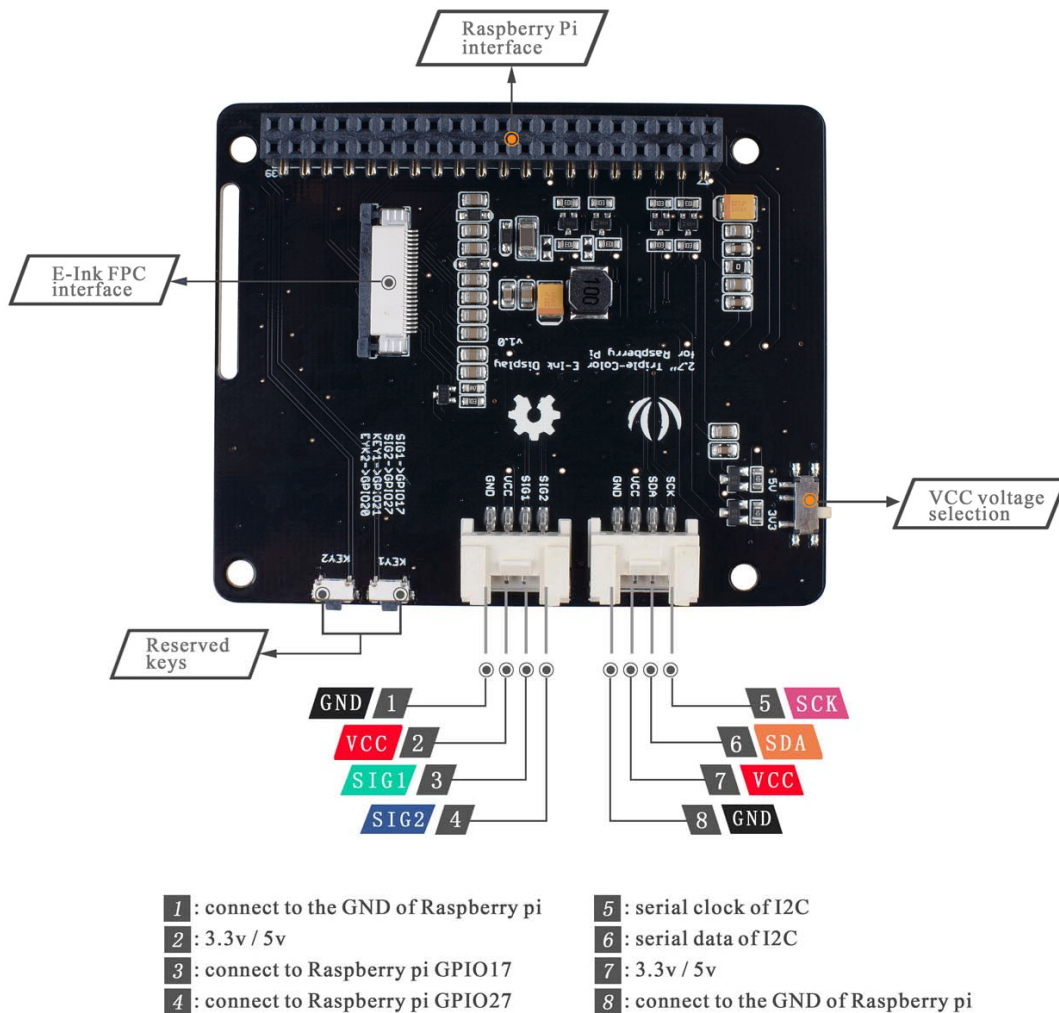
## Features

- High contrast
- Ultra wide viewing angle
- Ultra low power consumption
- Compatible with Raspberry pi 2 serial, Raspberry pi 3 serial, Raspberry pi 4 serial and Raspberry pi zero

## Applications

- Shelf label
- Industrial instrument
- Outdoor display scene
- Low power display scene

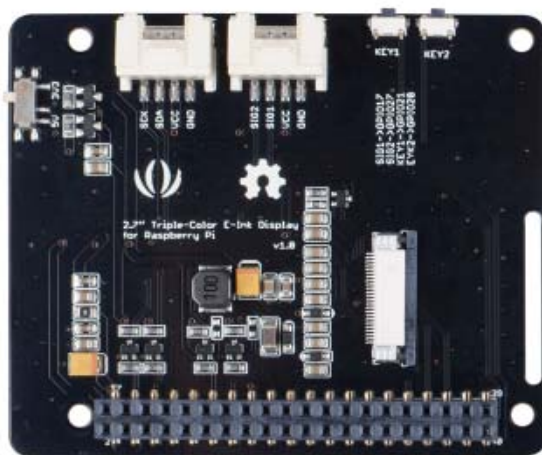
## Hardware Overview

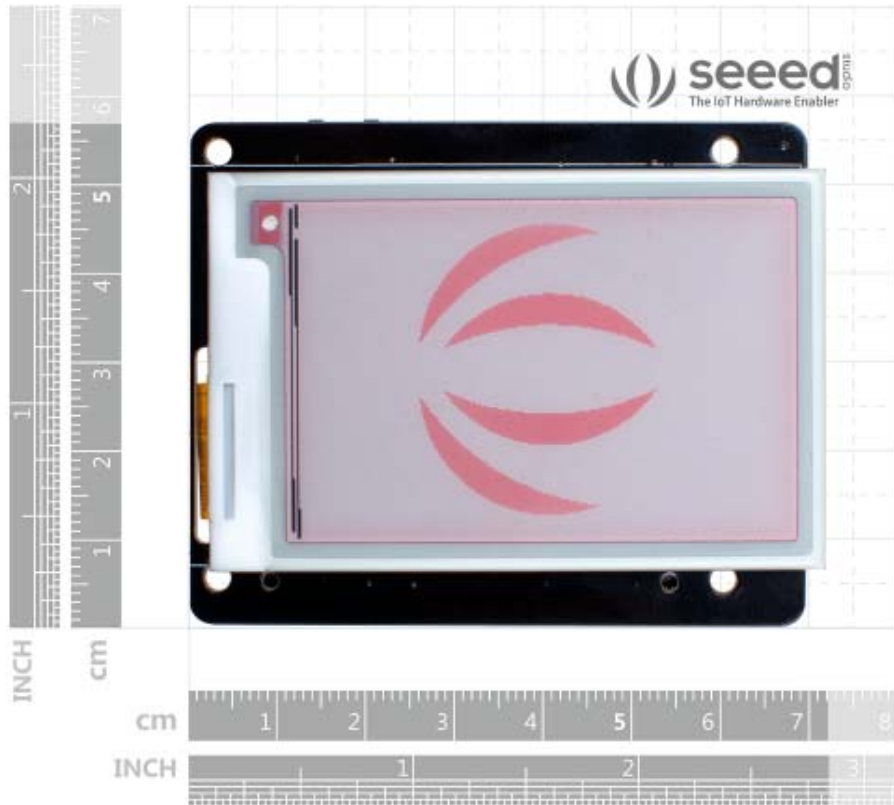
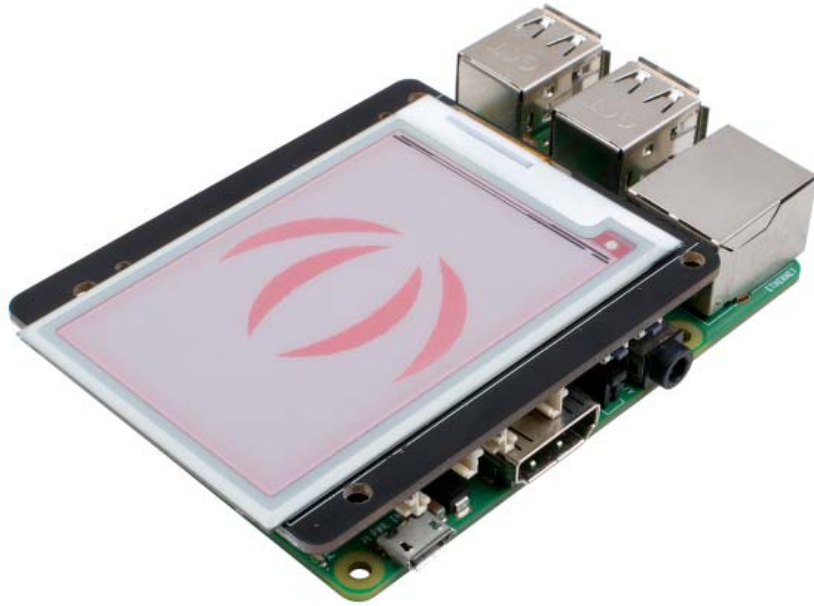


*Hardware Overview, click to check the original file*

## ECCN/HTS

ECCN	EAR99
HSCODE	8531200000
UPC	





<https://www.seeedstudio.com/2-7-Triple-Color-E-Ink-Display-for-Raspberry-Pi-p-4042.html/9-16-19>