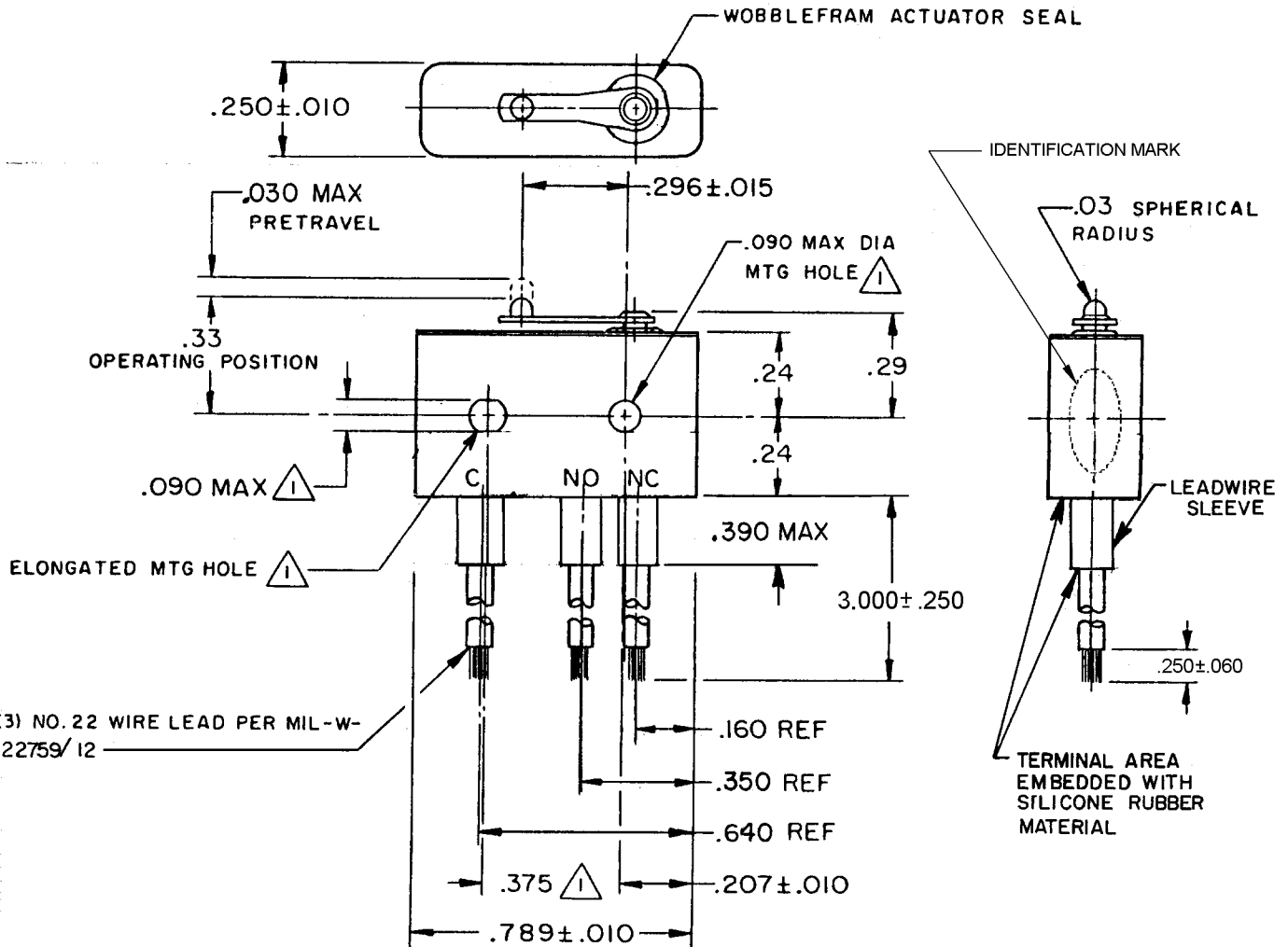


# MICRO SWITCH

FREERPORT ILLINOIS, U.S.A  
A DIVISION OF HONEYWELL  
FED. MFG. CODE 91929

## SWITCH - BASIC

CATALOG LISTING  
**16HM32**

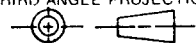


### NOTES

- 1 - MOUNTING HOLES WILL ACCEPT PINS OR SCREWS OF .087 MAX DIA ON .375 ± .002 CENTERS
- 2 - FOR USE IN TEMPERATURE RANGE -85°F TO +500°F (-65°C TO 260°C) (DOWN TO -300°F (-184°C) IF WIRE LEADS ARE NOT FLEXED)
- 3 - SWITCH IS HERMETICALLY SEALED PER ENCLOSURE DESIGN SYMBOL 5 OF MIL-PRF-8805
- 4 - ALL EXPOSED PARTS ARE OF CORROSION RESISTANT MATERIALS
- 5 - WEIGHT OF SWITCH ONLY IS .026 LB MAX.
- 6 - **DO NOT** APPLY MORE THAN 1 1/2 INCH LBS OF TORQUE WHEN TIGHTENING MOUNTING SCREWS

THIS DRAWING COVERS A PROPRIETARY ITEM AND IS THE PROPERTY OF MICRO SWITCH, A DIVISION OF HONEYWELL. THIS DRAWING IS NOT TO BE COPIED OR USED WITHOUT THE APPROVAL OF MICRO SWITCH.

THIRD ANGLE PROJECTION



### CHARACTERISTICS

OPERATING FORCE ----- 7 OZ MAX

RELEASE FORCE ----- 1 OZ MIN

DIFFERENTIAL TRAVEL --- .0003-.006

OVERTRAVEL ----- .003 MIN

### ELECTRICAL DATA

CONTACT ARRANGEMENT  
S P D T

LINE VOLTAGE	INDUCTIVE LOAD	RESISTIVE LOAD
28 VDC	1 AMP	3 AMP
115 VAC (400 CYCLE)	1 AMP	1 AMP

SCALE 2 TO 1

DO NOT SCALE PRINT

### TOLERANCES

APPLY TO DESIGN UNITS. CONVERSIONS ARE ONLY FOR REFERENCE. UNLESS NOTED, TOLERANCES ARE ±

	DIM. mm	TOL. mm/in	DIM. in	TOL. mm/in
NO PLACES	x	1/04	x	0.01
ONE PLACE	x,x	0.4/018	x,x	0.38/015
TWO PLACES	x,x,x	0.19/006	x,x,x	0.13/005
THREE PLACES	x,x,x,x		x,x,x,x	
ANGLES				

DESIGN UNITS  SI METRIC  US CUSTOMARY

WEIGHT 5

Downloaded By: Heckman, Steven - 06 October 2021 13:19:10 UTC HEC: EAR99 TEC: EAR99 GOV: ESO1.0

REPLACES: 16HM32

RELEASE NO.:

DRAWING NUMBER: M

ISSUE: A

CHECK: VS 27FEB08

REVISIONS:

A	0037763
	VS 27FEB08

VS 27FEB08

FO-52848-A

DRAWN: VS 27FEB08

CHECK: BLR 27FEB08

16HM32 A Released Honeywell proprietary & Confidential