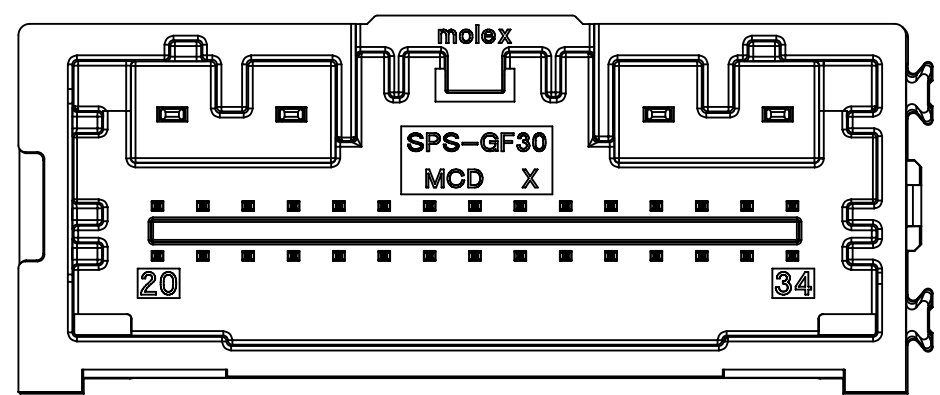
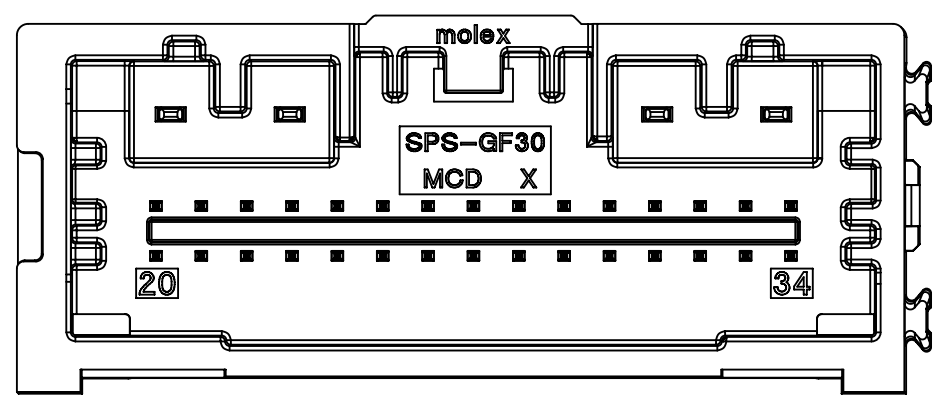


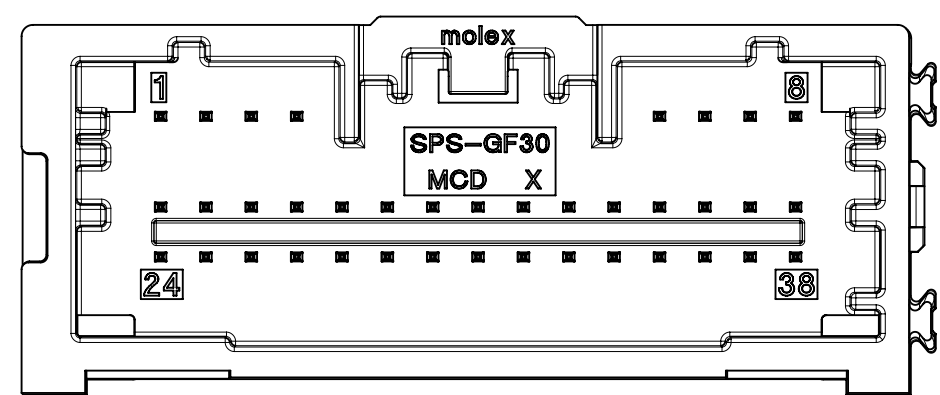
34WAY POLARIZATION OPTION 'A'
P/N: 34958-0340



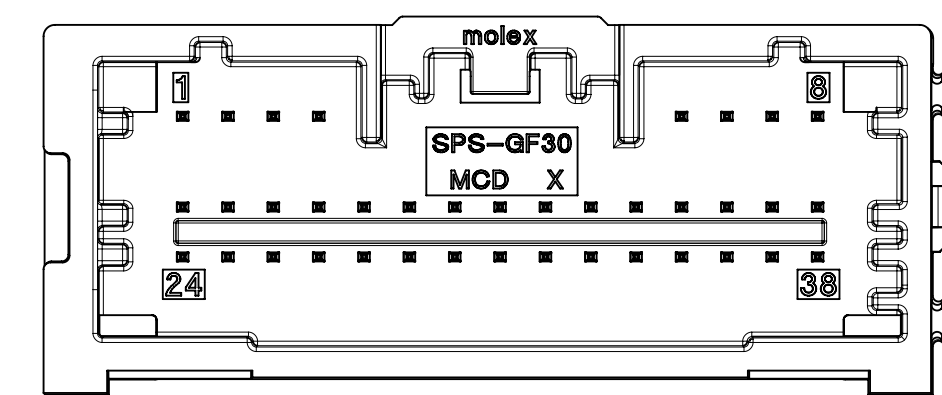
34WAY POLARIZATION OPTION 'B'
P/N: 34958-0341



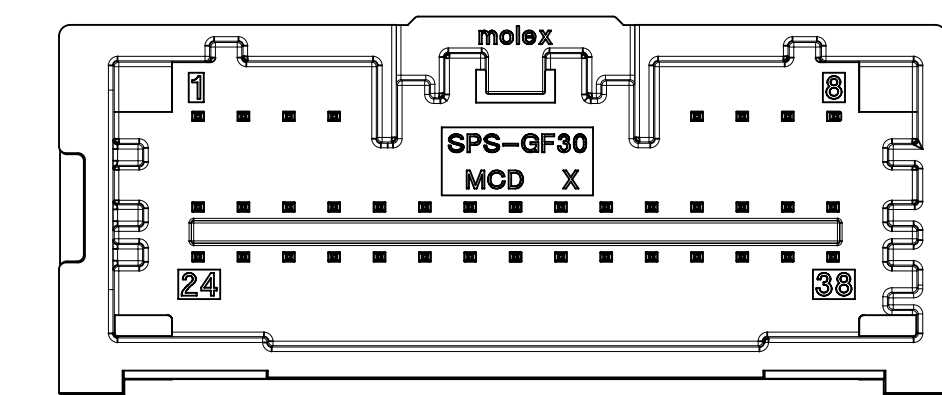
34WAY POLARIZATION OPTION 'C'
P/N: 34958-0342



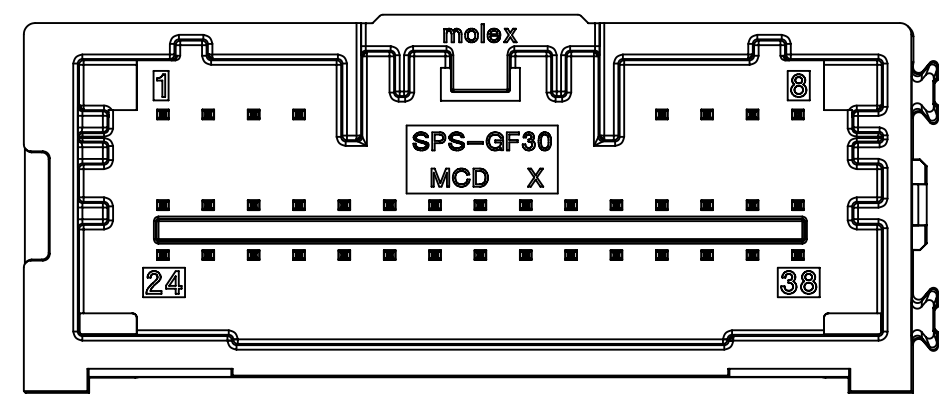
38WAY POLARIZATION UPDATED OPTION 'A'
P/N: 34958-0383



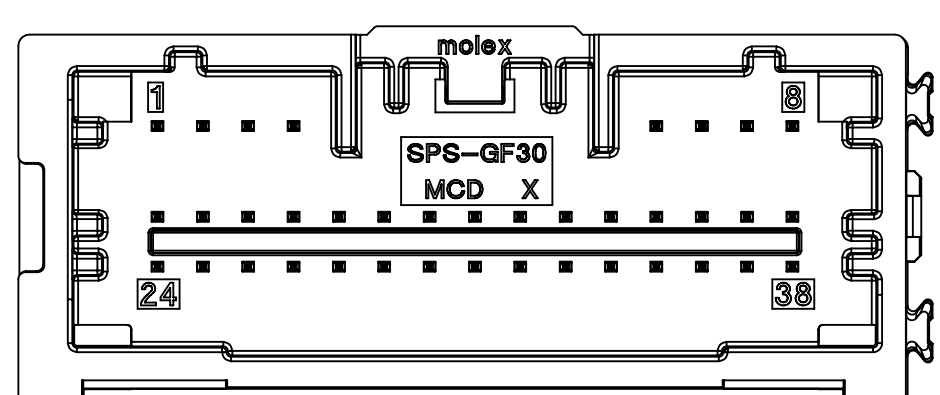
38WAY POLARIZATION UPDATED OPTION 'B'
P/N: 34958-0384



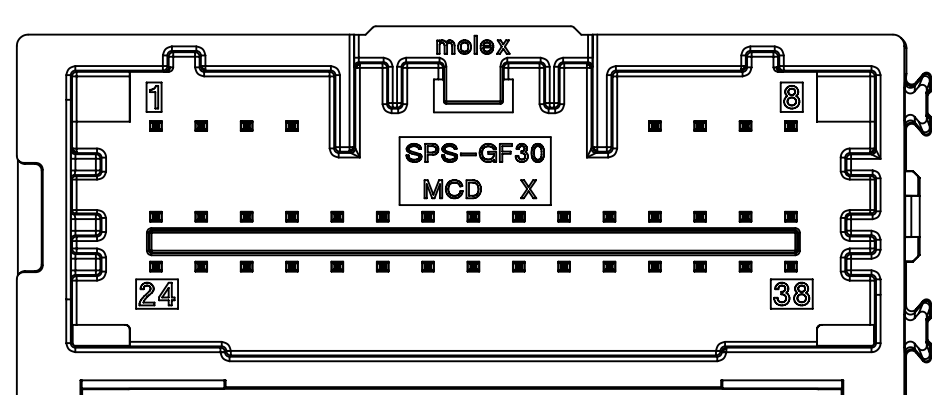
38WAY POLARIZATION UPDATED OPTION 'C'
P/N: 34958-0385



38WAY POLARIZATION OPTION 'A'
P/N: 34958-0380



38WAY POLARIZATION OPTION 'B'
P/N: 34958-0381



38WAY POLARIZATION OPTION 'C'
P/N: 34958-0382

NOTES: VALID UNLESS OTHERWISE SPECIFIED

1. GENERAL:

a. CONNECTOR HEADER MUST BE VALIDATED TO THE FOLLOWING FUNCTIONAL REQUIREMENTS:

VALIDATION SPECIFICATION = GMW3191 JUNE 2012

SOLDERABILITY = SMES-152

b. APPLICATION REQUIREMENTS (REFERENCE ONLY) FOR:

SEE APPLICATION SPECIFICATION = AS-34959-001

SEE PRODUCT SPECIFICATION = PS-34959-001

MATES WITH: SD-34959-030

c. PACKAGING SPECIFICATION: SEE TABLE

2. DESIGN: MATERIALS:

a. SHROUD (PLASTIC HOUSING):
RESIN - SPS 30%GF

b. 0.50mm BLADES:
BASE MATERIAL: C26800
PLATING TYPE: AS NOTED

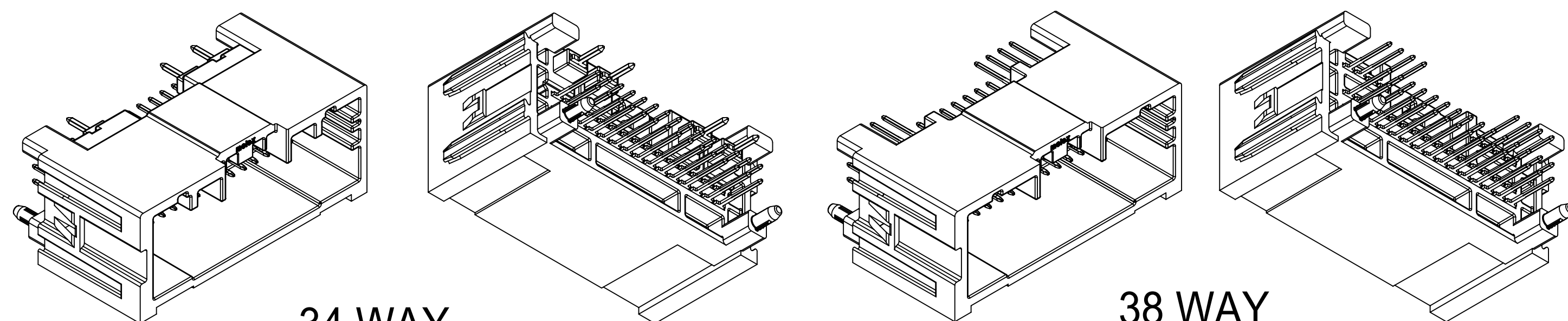
c. 1.2mm BLADES:
BASE MATERIAL: C26800
PLATING TYPE: AS NOTED

3. PLATING REQUIREMENTS:

a. UNDERPLATING - OVERALL NICKEL

b. OVERPLATING - OVERALL TIN

MATERIAL NUMBER			CKT SIZE	DESCRIPTION	POL	COLOR	STATUS
TRAY PACKAGING PK-31302-070	T&R PACKAGING PK-47799-0001	TUBE PACKAGING PK-31301-688					
34958-0340	34958-8340	34958-7340	34	34WAY MINI50 VERTICAL HEADER ASSEMBLY	A	BLACK	SALEABLE
34958-0341	34958-8341	34958-7341	34	34WAY MINI50 VERTICAL HEADER ASSEMBLY	B	GREY	SALEABLE
34958-0342	34958-8342	34958-7342	34	34WAY MINI50 VERTICAL HEADER ASSEMBLY	C	DK GREY	SALEABLE
34958-0380	34958-8380	34958-7380	38	38WAY MINI50 VERTICAL HEADER ASSEMBLY	A	BLACK	WILL BE OBSOLETE IN 2019
34958-0381	34958-8381	34958-7381	38	38WAY MINI50 VERTICAL HEADER ASSEMBLY	B	GREY	WILL BE OBSOLETE IN 2019
34958-0382	34958-8382	34958-7382	38	38WAY MINI50 VERTICAL HEADER ASSEMBLY	C	DK GREY	WILL BE OBSOLETE IN 2019
34958-0383	34958-8383	34958-7383	38	38WAY MINI50 VERTICAL HEADER ASSEMBLY	UPDATED A	BLACK	SALEABLE
34958-0384	34958-8384	34958-7384	38	38WAY MINI50 VERTICAL HEADER ASSEMBLY	UPDATED B	GREY	SALEABLE
34958-0385	34958-8385	34958-7385	38	38WAY MINI50 VERTICAL HEADER ASSEMBLY	UPDATED C	DK GREY	SALEABLE



34 WAY

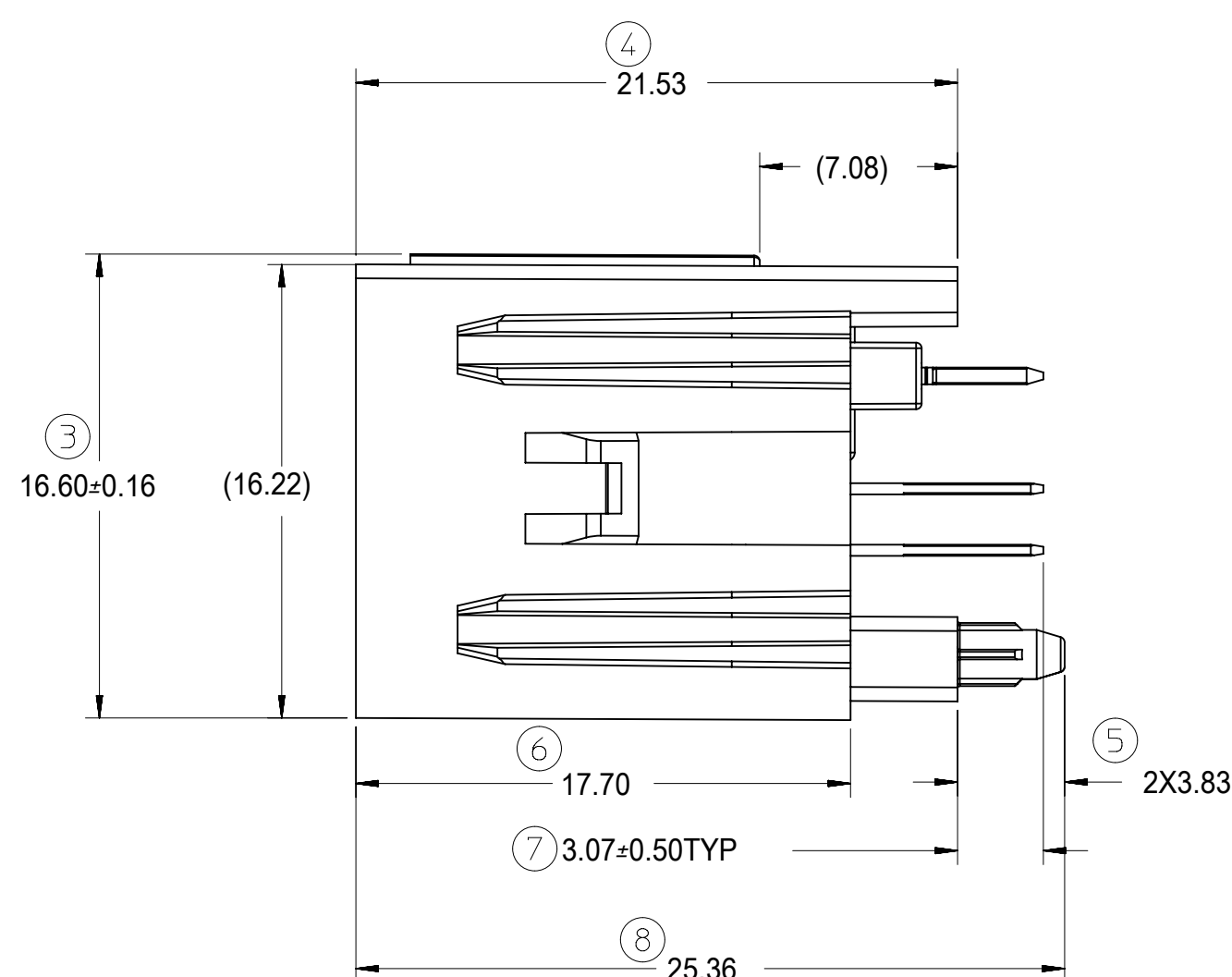
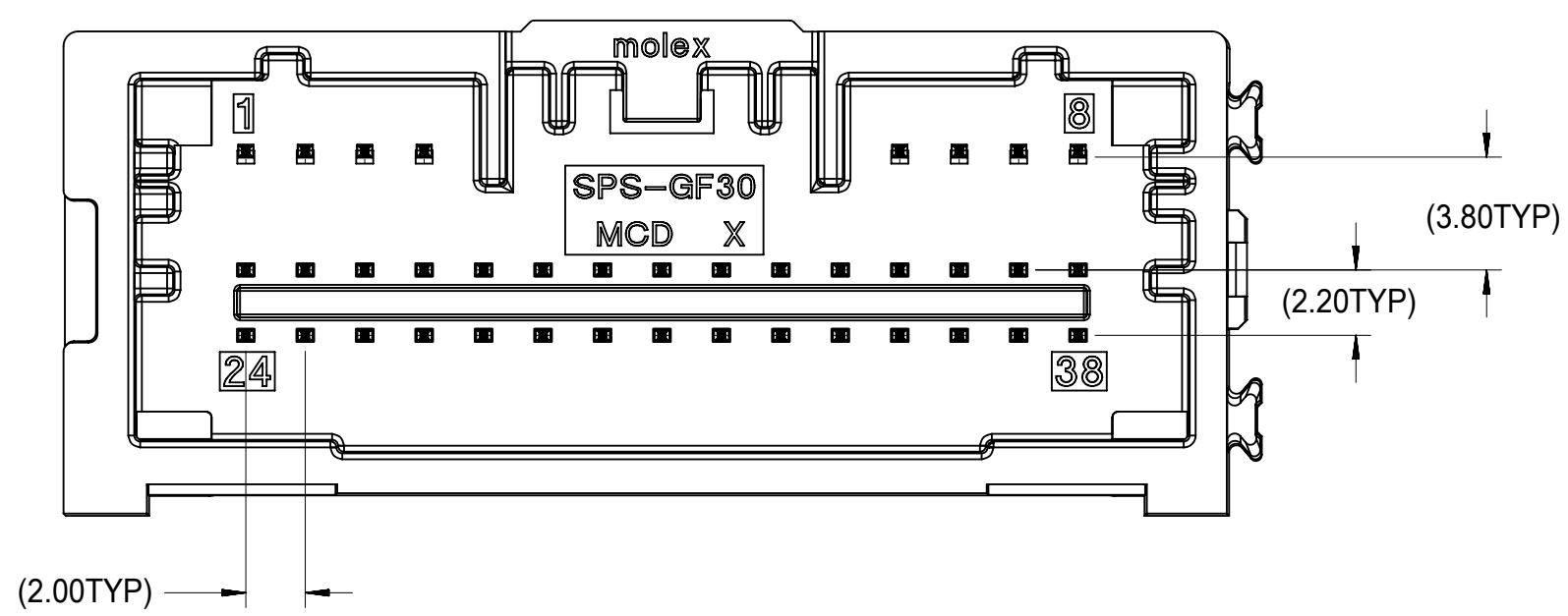
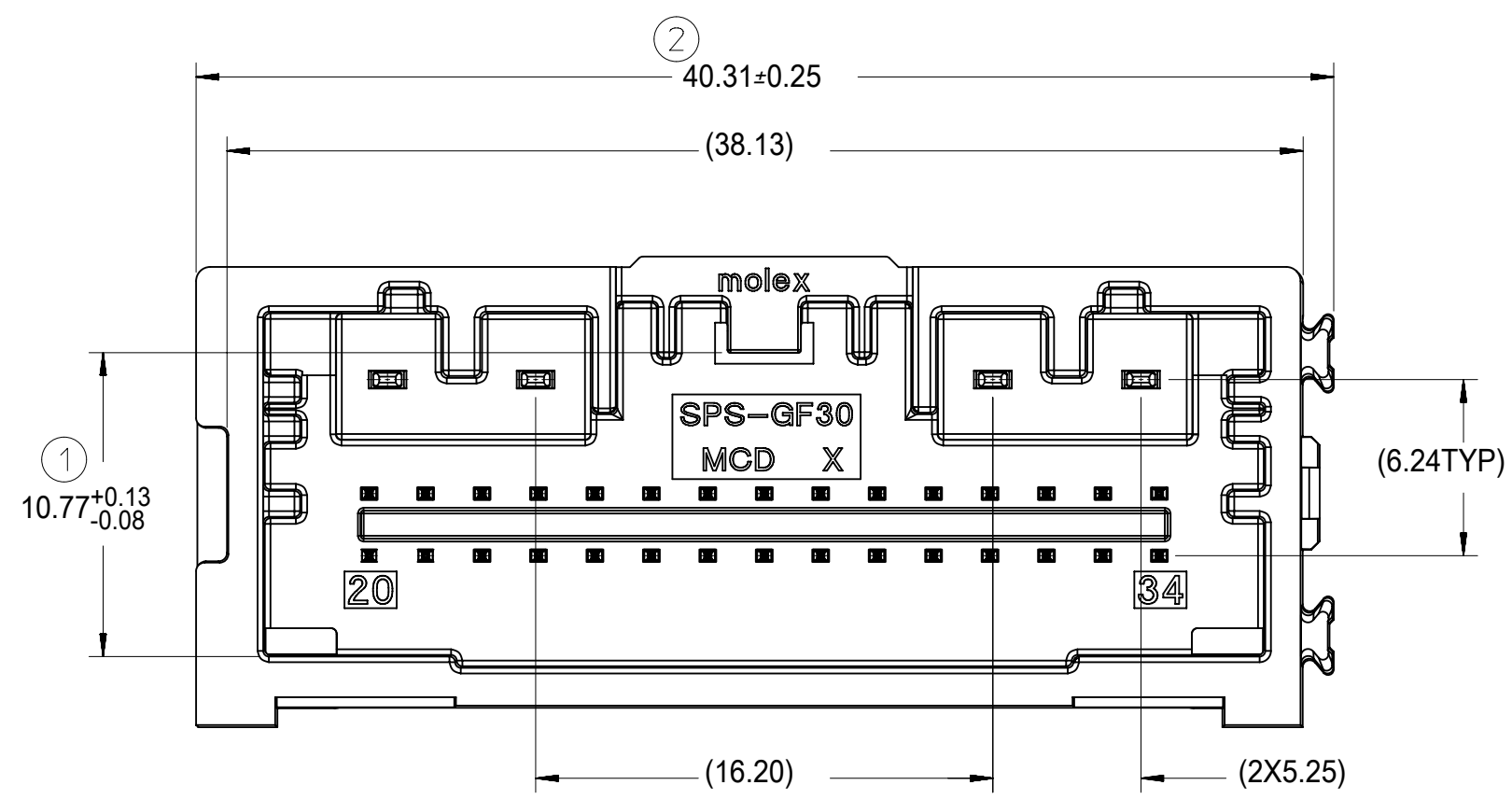
38 WAY

ISOMETRIC VIEWS

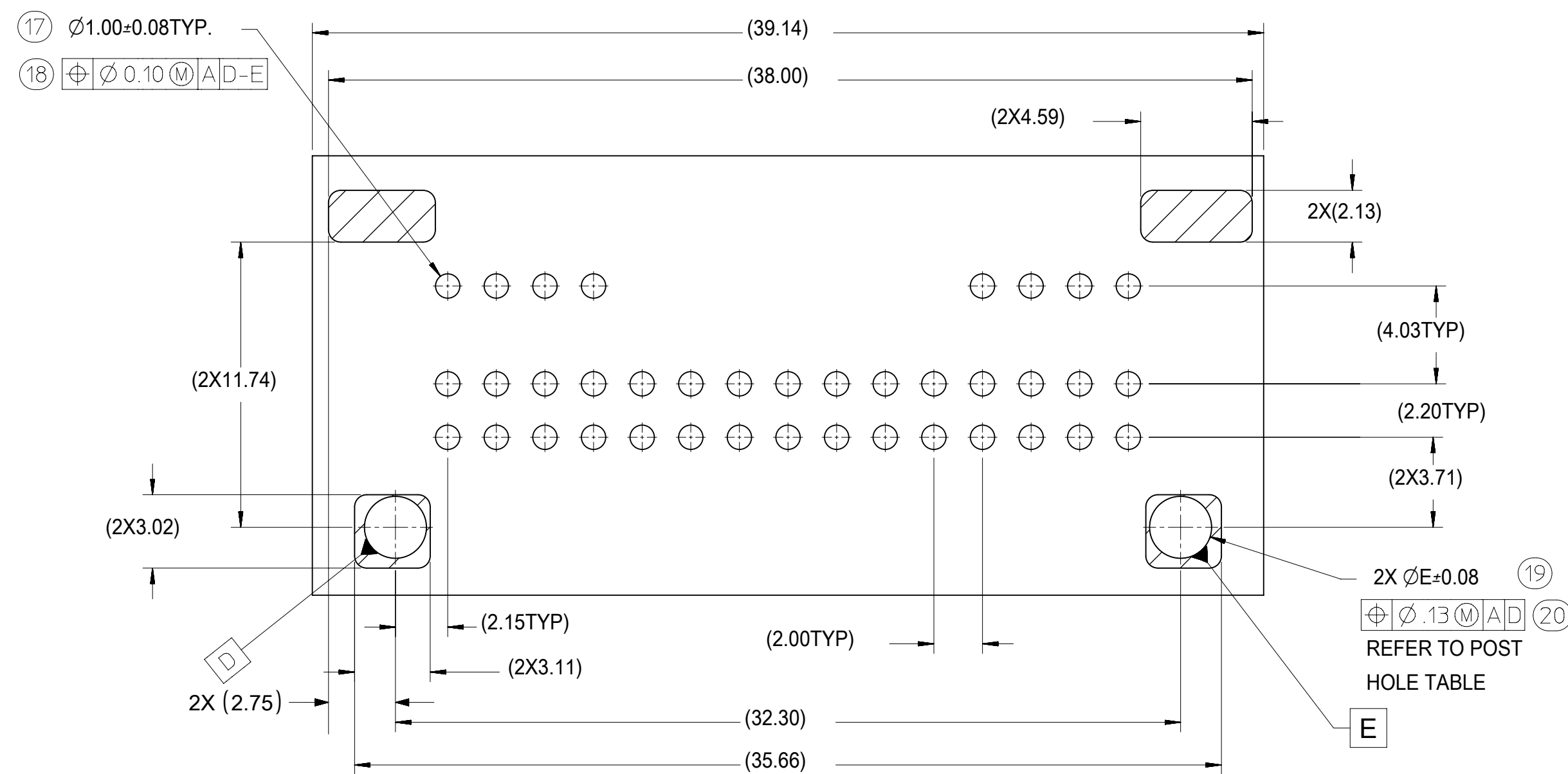
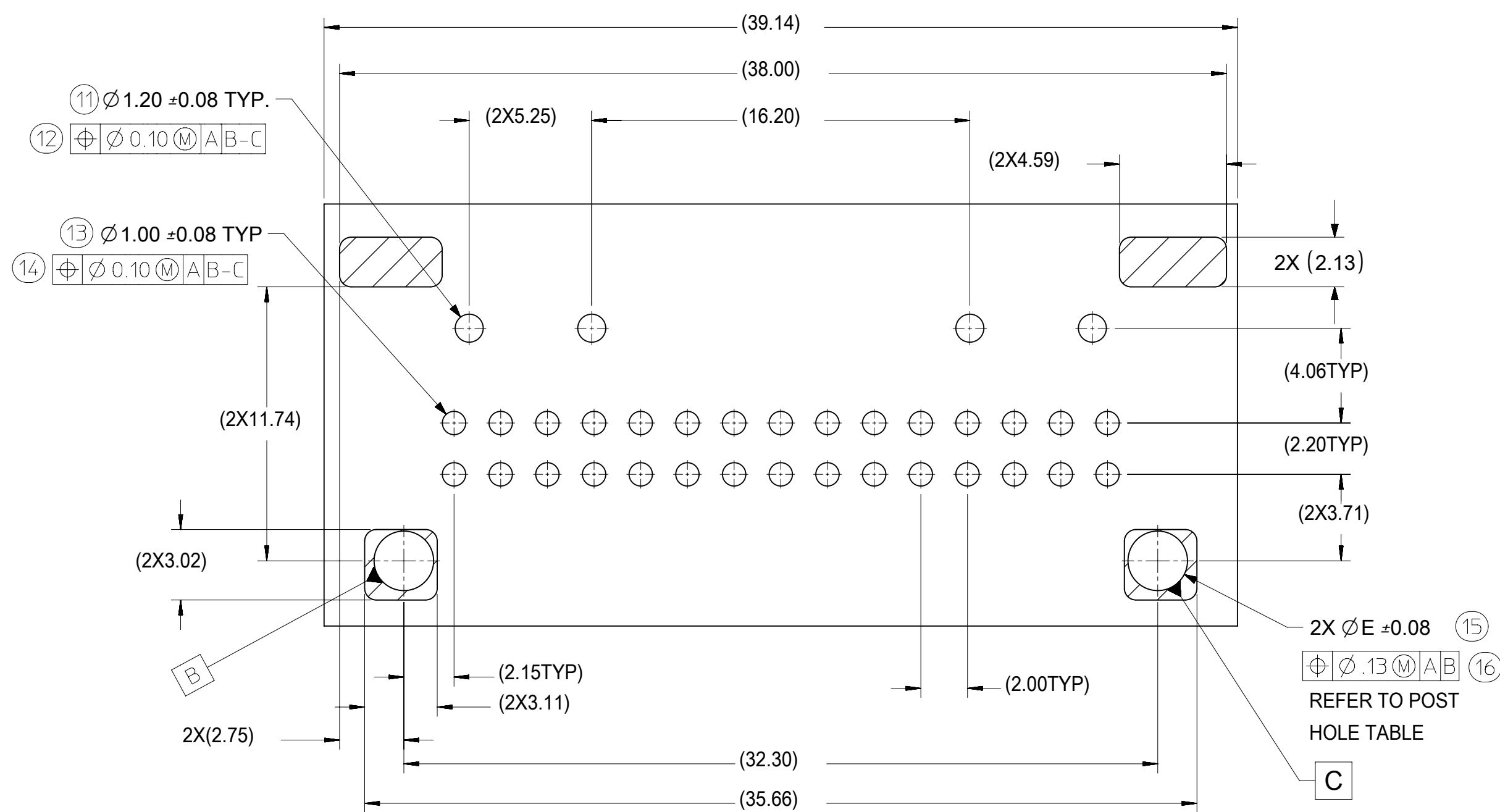
SCALE 2:1

C1	UPDATED NEWEST VIEW OF THE POLARIZATION OPTION UPDATED A & B & C.	609591
C	ADDED NEW P/N IN THE BOM ON SHEET 1: 34958-0383 \ 34958-0384 \ 34958-0385\34958-7383\34958-7384\34958-7385\34958-8383\34958-8384\34958-8385. ADDED PRODUCT STATUS IN THE BOM.	10886111
REV	REV DESCRIPTION	ECN SAP NO.

SYMBOLS		THIS DRAWING CONTAINS INFORMATION THAT IS PROPRIETARY TO MOLEX ELECTRONIC TECHNOLOGIES, LLC AND SHOULD NOT BE USED WITHOUT WRITTEN PERMISSION		CURRENT REV DESC:		
▽ = 0	DIMENSION UNITS	mm	SCALE	3:1	EC NO: 609591 DRWN: SWU31 2018/12/25 CHK'D: CDZHANG 2019/01/30 APPR: CDZHANG 2019/01/30 INITIAL REVISION: DRWN: JFISCHER01 2013/12/05 APPR: RBAUMAN 2014/02/19	
▽ = 0	GENERAL TOLERANCES (UNLESS SPECIFIED)					
▽ = 0	ANGULAR TOL ± 1.0°					
▽ = 0	4 PLACES ±					
▽ = 0	3 PLACES ±					
▽ = 0	2 PLACES ±					
▽ = 0	1 PLACE ±					
▽ = 0	0 PLACES ±					
■ = 0	DRAFT WHERE APPLICABLE MUST REMAIN WITHIN DIMENSIONS		THIRD ANGLE PROJECTION	DRAWING	SERIES	
▽ = 0				D-SIZE	34958	
DOCUMENT STATUS		P1	RELEASE DATE	2019/01/30 09:46:53	molex 34 & 38 CKT MINI50 VERTICAL HEADER ASSMEBLY SALES DRAWING PRODUCT CUSTOMER DRAWING DOCUMENT NUMBER: SD-34958-300 DOC TYPE: PSD DOC PART: 001 REVISION: C1 MATERIAL NUMBER: 34958 CUSTOMER: GENERAL MARKET SHEET NUMBER: 1 OF 2	



REFERENCE PCB LAYOUT



REFERENCE 34WAY PCB LAYOUT

REFERENCE 38WAY PCB LAYOUT

POST HOLE TABLE:

FOR DIM E:	
PRESS FIT:	2.15
DROP IN:	2.55

DIN 16901	CODE LETTER	NOMINAL DIMENSION RANGE													
		OVER UP TO	0	1	3	6	10	15	22	30	40	53	70	90	120
PRECISION ENGINEERING	A		±0.10	±0.12	±0.14	±0.16	±0.20	±0.22	±0.24	±0.26	±0.28	±0.31	±0.35	±0.40	±0.50
	B		±0.05	±0.06	±0.07	±0.08	±0.10	±0.12	±0.14	±0.16	±0.18	±0.21	±0.25	±0.30	±0.40

A: FOR NON-MOLD RELATED DIMENSIONS (ACROSS PARTING LINE)
 B: FOR MOLD RELATED DIMENSIONS (WITHIN MOLD COMPONENTS)

SYMBOLS		THIS DRAWING CONTAINS INFORMATION THAT IS PROPRIETARY TO MOLEX ELECTRONIC TECHNOLOGIES, LLC AND SHOULD NOT BE USED WITHOUT WRITTEN PERMISSION	
▽ = 0	mm	SCALE	1:1
▽ = 0	GENERAL TOLERANCES (UNLESS SPECIFIED)		
▽ = 0	ANGULAR TOL ± 1.0°		
▽ = 0	CURRENT REV DESC:		
▽ = 0	EC NO: 609591		
▽ = 0	DRWN: SWU31 2018/12/25		
▽ = 0	CHK'D: CDZHANG 2019/01/30		
▽ = 0	APPR: CDZHANG 2019/01/30		
▽ = 0	INITIAL REVISION:		
▽ = 0	DRWN: JFISCHER01 2013/12/05		
▽ = 0	APPR: RBAUMAN 2014/02/19		
▽ = 0	DRAFT WHERE APPLICABLE MUST REMAIN WITHIN DIMENSIONS		
▽ = 0	THIRD ANGLE PROJECTION	DRAWING	SERIES
		D-SIZE	34958
DOCUMENT NUMBER		DOC TYPE	DOC PART
SD-34958-300		PSD	001
REVISION		C1	
MATERIAL NUMBER		CUSTOMER	
GENERAL MARKET		SHEET NUMBER	
		2 OF 2	