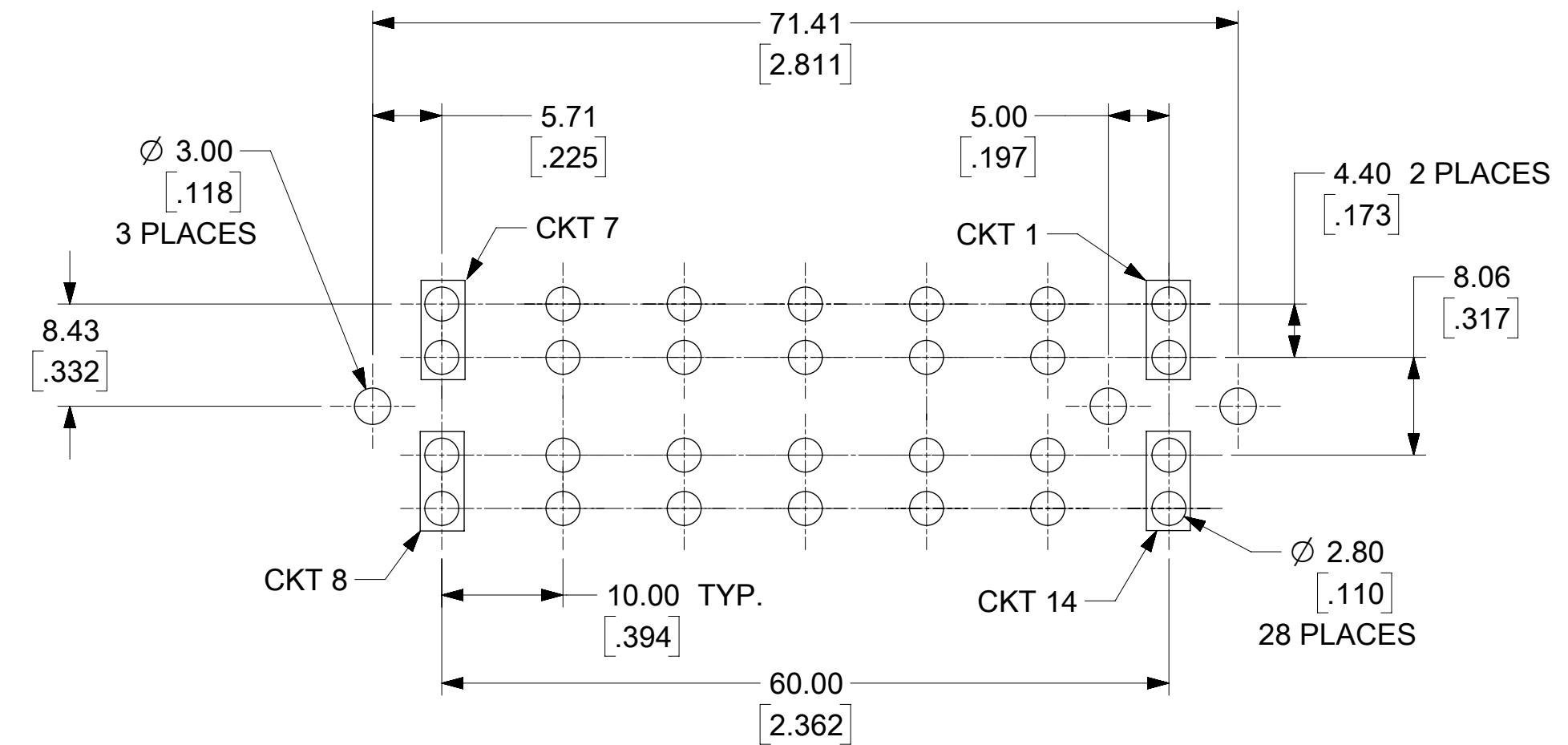
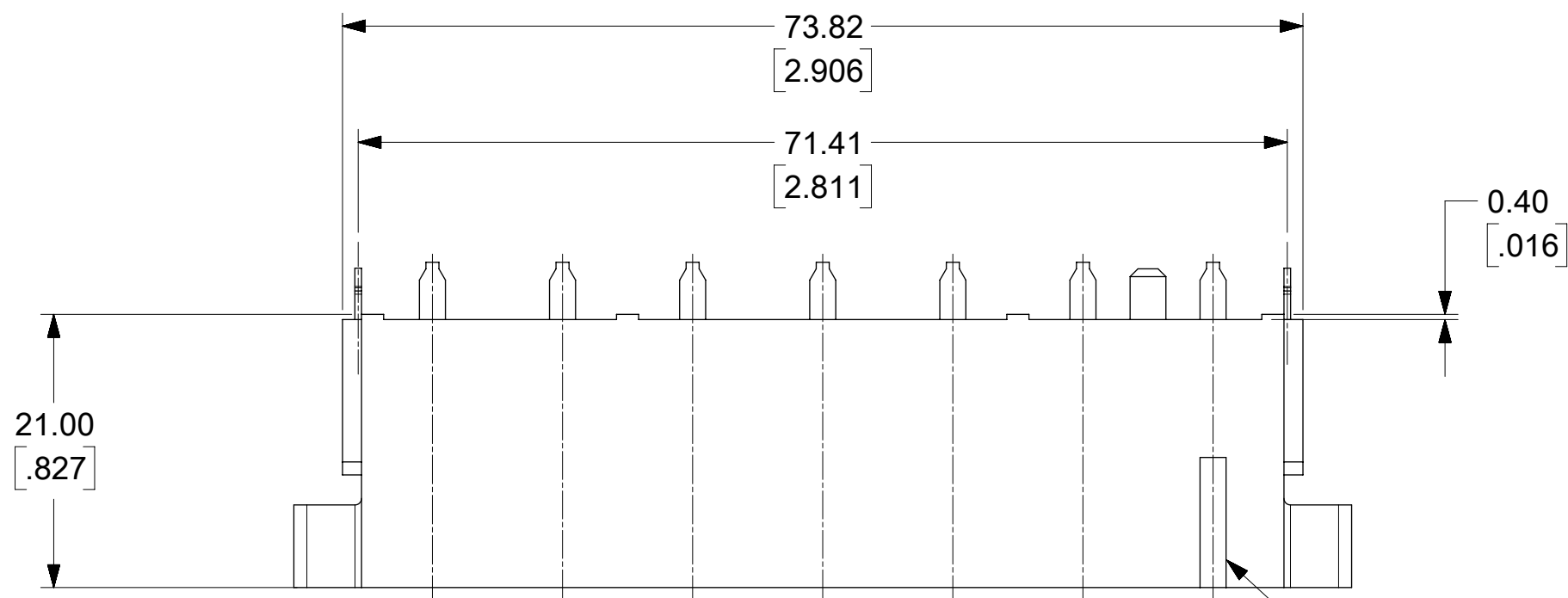
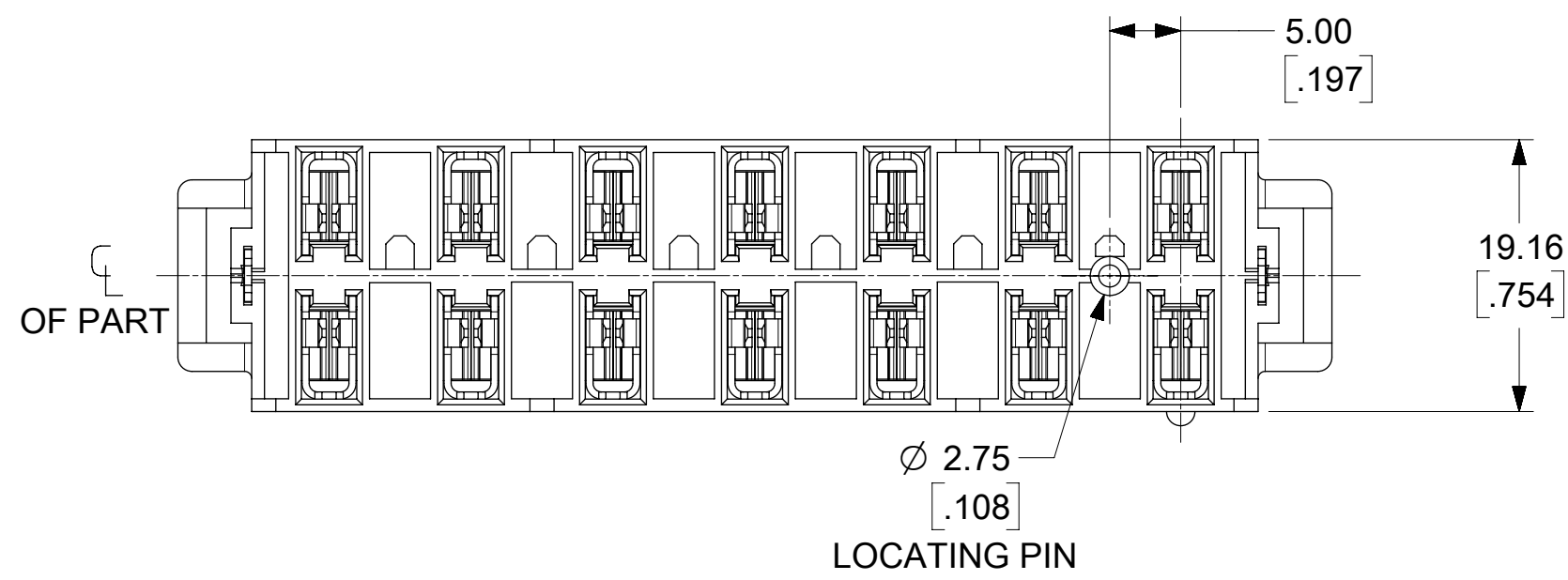
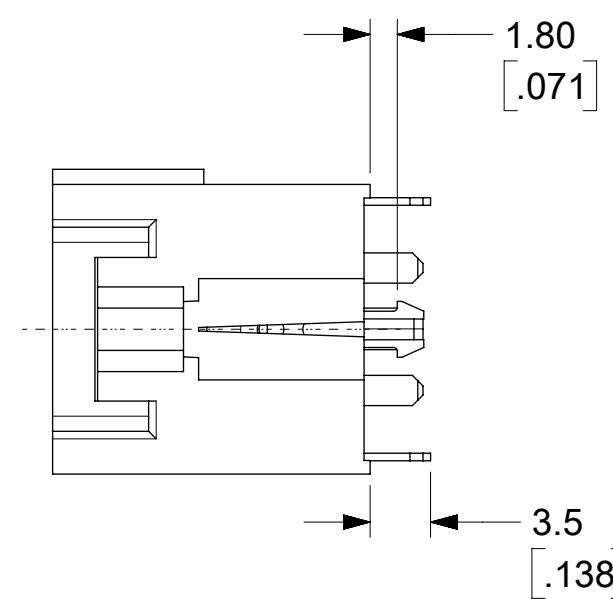
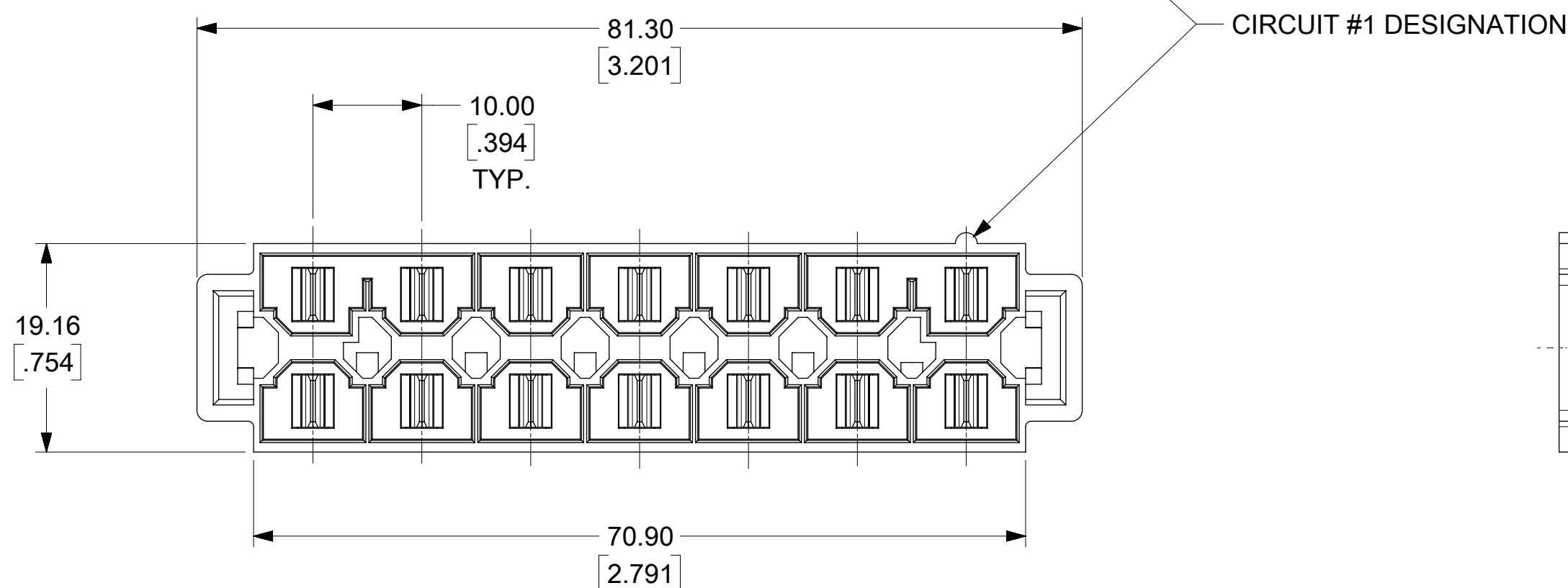


**NOTES:**

1. MATERIALS:  
HOUSING: 30% GLASS FILLED NYLON 4/6, U.L. 94V-0, COLOR: BLACK.  
TERMINAL: ALLOY 151 PLATING: TIN-LEAD OVER NICKEL.
2. PRODUCT SPEC.: PSX-42815-0001
3. ALL DIMENSIONS SHOWN FOR REFERENCE ONLY.
4. USES STANDARD 42874 MINI-FIT SR. HEADER TERMINALS.
5. PART MATES WITH MOLEX RECEPTACLE 43914.



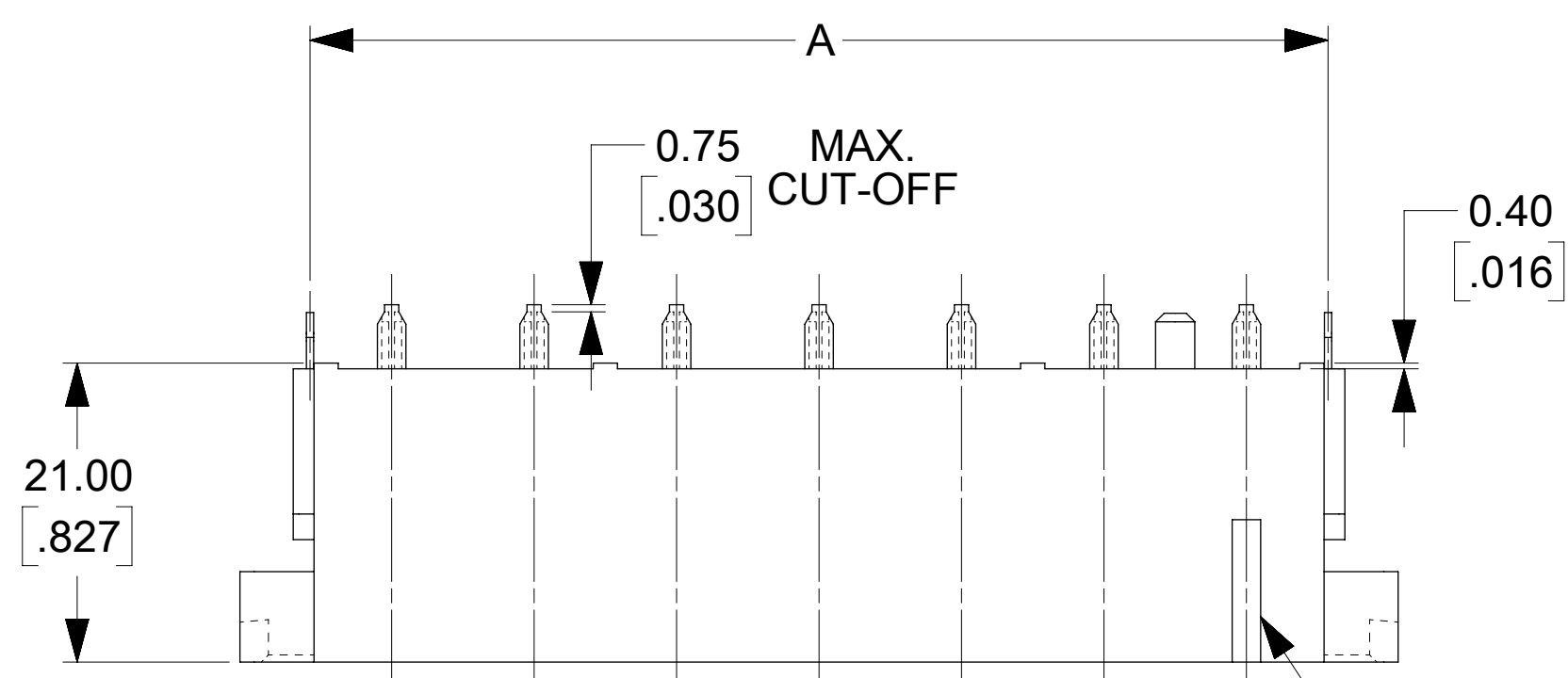
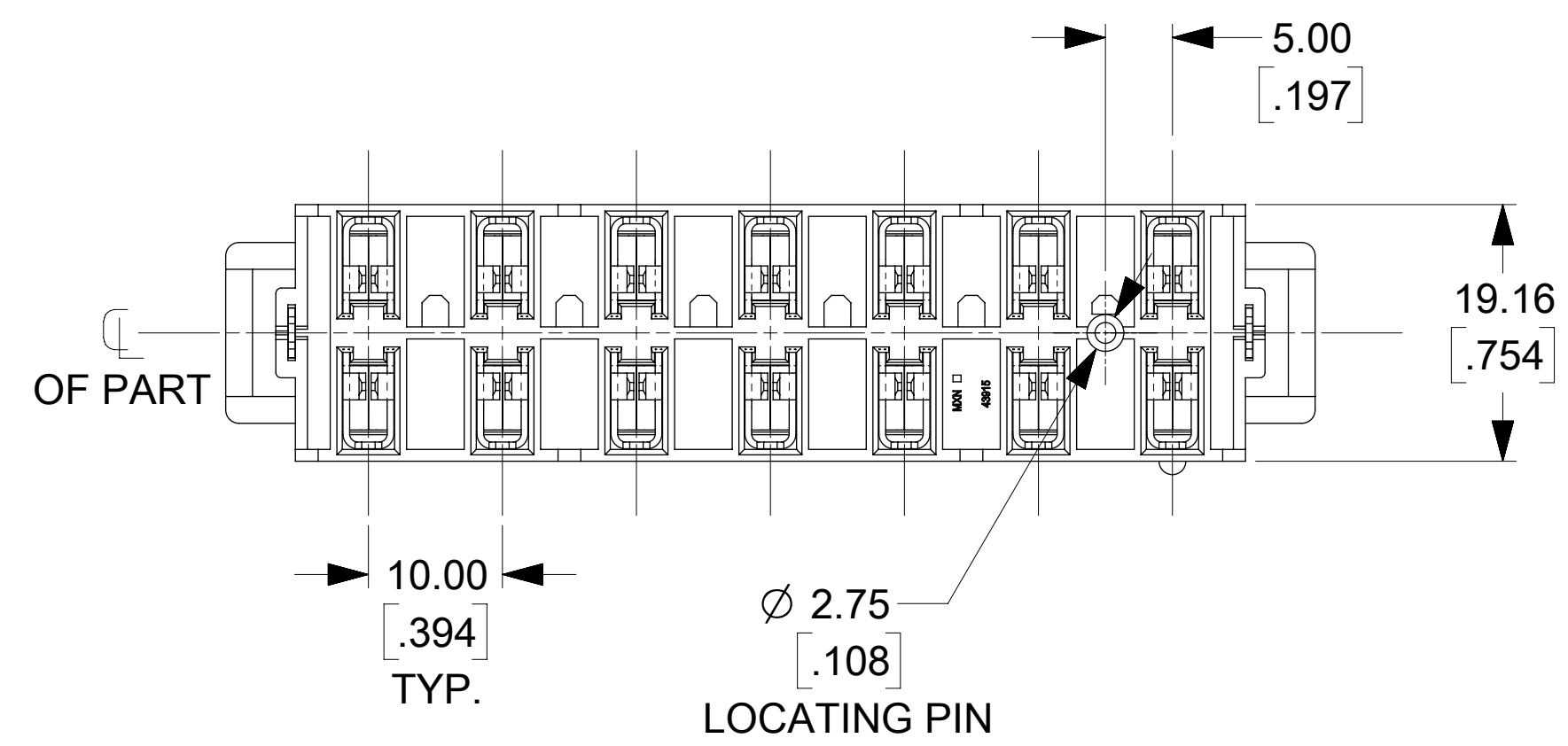
RECOMMENDED P.C. BOARD PLATED-THRU HOLE LAYOUT



**PROPOSAL**

THIS DRAWING CONTAINS INFORMATION THAT IS PROPRIETARY TO MOLEX ELECTRONIC TECHNOLOGIES, LLC AND SHOULD NOT BE USED WITHOUT WRITTEN PERMISSION

DIMENSION UNITS		SCALE		CURRENT REV DESC: MIGRATED TO ECTR							
MM		2:1									
GENERAL TOLERANCES (UNLESS SPECIFIED)				EC NO: 604054				VERTICAL HEADER 14 CIRCUIT (MINI-FIT SR.)			
				DRWN: ABABU01 2018/08/22							
4 PLACES ±				CHK'D: ISHWARG 2018/09/06				PRODUCT CUSTOMER DRAWING			
3 PLACES ±				APPR: ISHWARG 2018/09/06							
2 PLACES ±				INITIAL REVISION:				DOCUMENT NUMBER: SD-43915-001 DOC TYPE: PSD DOC PART: 001 REVISION: A2			
1 PLACE ±				DRWN: COMERCI 1997/05/08							
0 PLACES ±				APPR: FRY 1997/05/12				MATERIAL NUMBER: 439151005 CUSTOMER: GENERAL MARKET SHEET NUMBER: 1 OF 1			
ANGULAR TOL ± 0.5°				THIRD ANGLE PROJECTION							
DRAFT WHERE APPLICABLE MUST REMAIN WITHIN DIMENSIONS				DRAWING: C-SIZE		SERIES: 43915					



LEGEND:  
439151\*\*\*

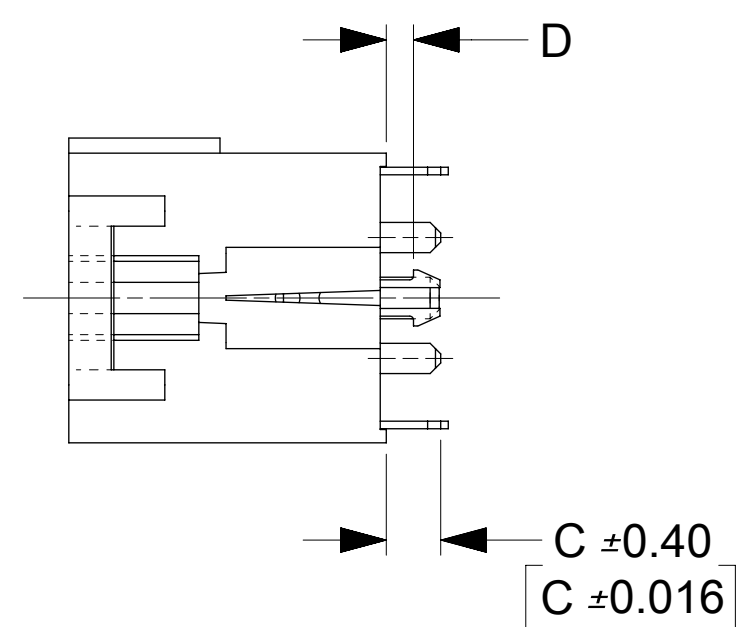
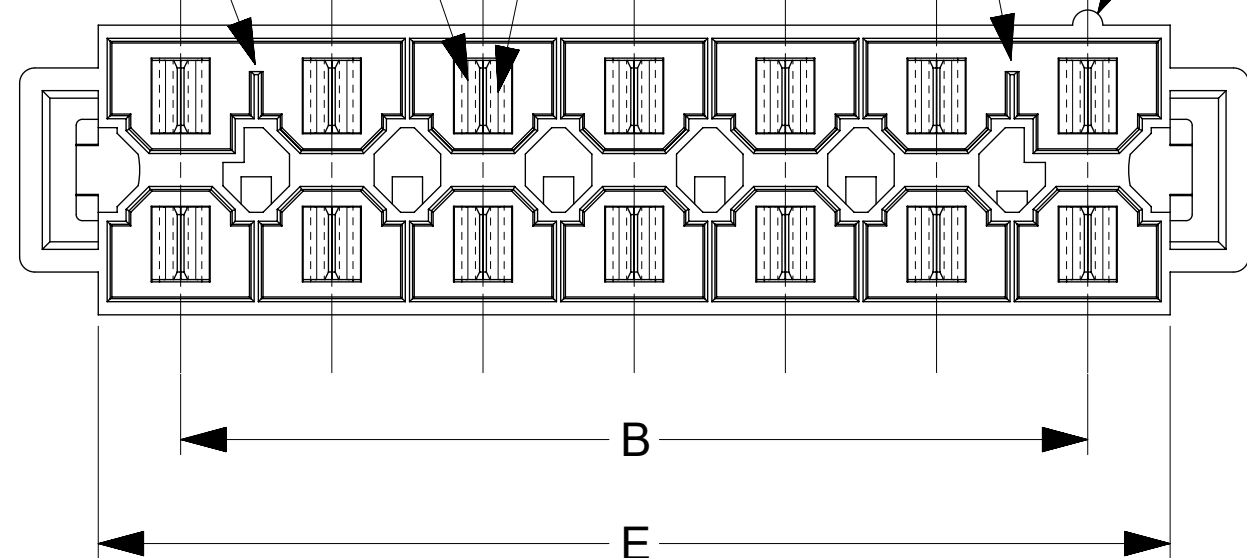
PLATING:

- 1 OR 9 = TIN PLATING
- 2 = SELECT GOLD AND SELECT TIN OVER NICKEL
- 4 = SELECT SILVER AND SELECT TIN OVER NICKEL

POLARIZING SLOTS (2 PLACES)  
(SEE CHART AND SEE NOTE 6)

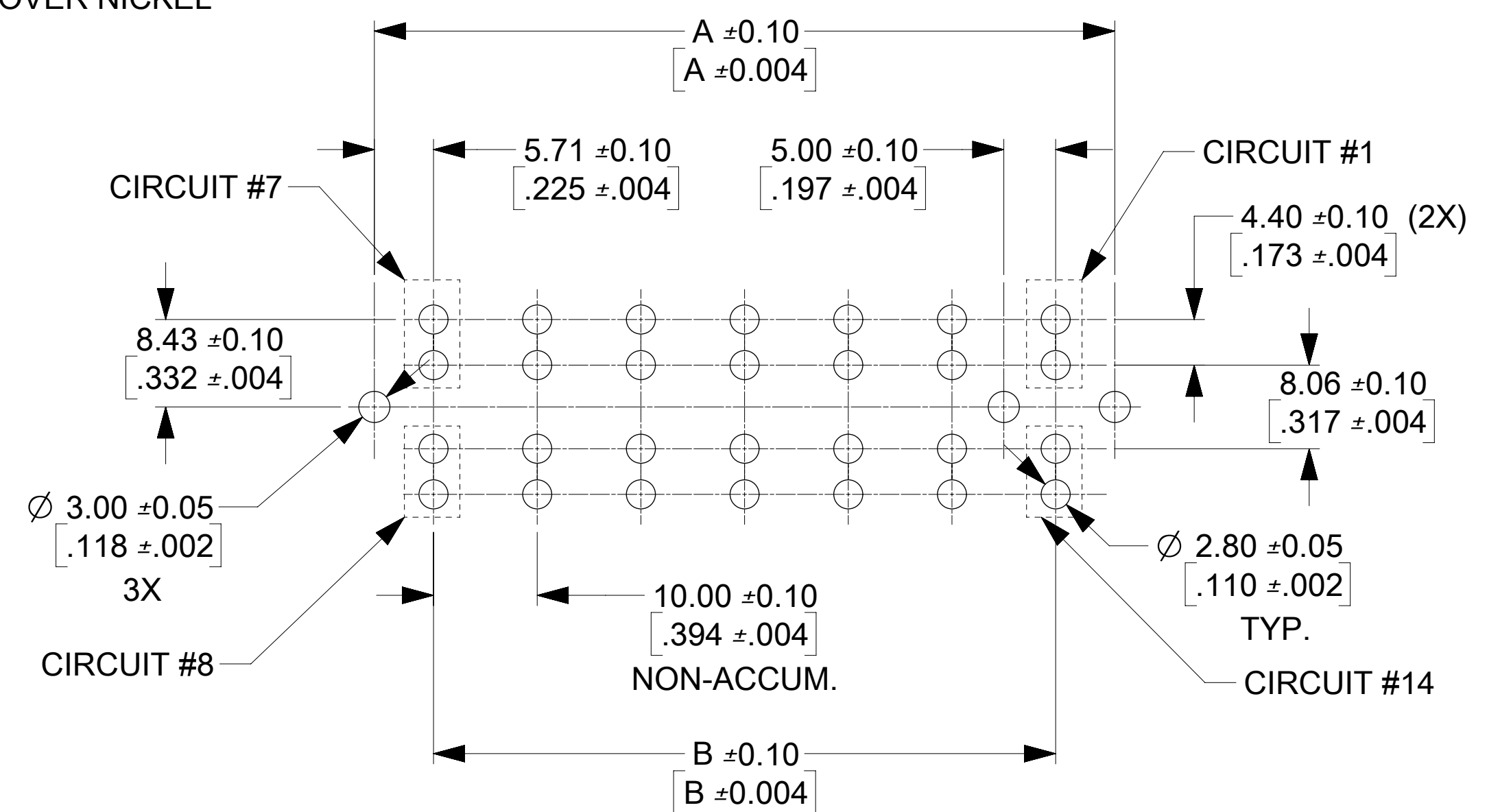
MATING AREA  
(SEE NOTE 5)

CIRCUIT #1 DESIGNATION



NOTES:

1. MATERIALS:  
HOUSING: 30% GLASS FILLED NYLON 4/6, U.L.94V-0, COLOR: BLACK.  
TERMINAL: ALLOY 151  
PLATING: \*TIN OVER NICKEL.  
OR SELECT GOLD AND SELECT TIN OVER NICKEL  
OR SELECT SILVER AND SELECT TIN OVER NICKEL  
(SEE CHART)  
\* THE PRIMARY SHIPPING CARTON WILL BE LABELED  
'COMPLAINT TO RoHS DIRECTIVE 2002/95/EC  
AND ELV ANNEX II OF DIRECTIVE 2000/53/EC'.  
CARTONS WITHOUT THIS LABEL MAY CONTAIN  
PRODUCT WITH TIN-LEAD.
2. PRODUCT SPEC.: PS-42815-0001
3. PARTS ARE NOT TO BE MATED OR UNMATED WHILE CIRCUITS ARE LIVE.
4. PART MATES WITH MOLEX RECEPTACLE 43914.
5. WHEN USING OVERALL TIN PLATED TERMINALS:  
FOR APPLICATIONS INVOLVING VIBRATION AND/OR THERMAL CYCLING, MOLEX STRONGLY  
RECOMMENDS THE USE OF NYE LUBRICANT (NYOGEL 760G) ON THE MATING  
SURFACES OF THE TERMINAL.
6. POLARIZING SLOTS TO BE LOCATED BETWEEN CIRCUITS ON EITHER END  
OF HOUSING OF THE CIRCUIT 1 ROW. AS SHOWN.  
EXCEPTION: THE 6 CIRCUIT HOUSING WILL HAVE A SINGLE SLOT ON THE CIRCUIT 1 END ONLY.
7. PARTS CONFORMS TO CLASS 'B' REQUIREMENTS OF COSMETIC SPEC-PS-45499-002.
8. REFER AS-42815-001 FOR TIN PLATED TERMINALS RECOMMENDED LUBRICATION PROCEDURE.



RECOMMENDED P.C. BOARD PLATED-THRU HOLE LAYOUT  
(14 CIRCUIT LAYOUT SHOWN)

THIS DRAWING CONTAINS INFORMATION THAT IS PROPRIETARY TO MOLEX ELECTRONIC TECHNOLOGIES, LLC AND SHOULD NOT BE USED WITHOUT WRITTEN PERMISSION									
DIMENSION UNITS <b>MM/IN</b>		SCALE <b>2:1</b>		CURRENT REV DESC: MIGRATED TO ECTR					
GENERAL TOLERANCES (UNLESS SPECIFIED)				EC NO: 611033					
		MM	INCH	DRWN: ME		2018/11/14			
4 PLACES ±				CHK'D: MKAMATHMARAK		2019/01/25			
3 PLACES ±			± 0.008	APPR: ISHWARG		2019/02/08			
2 PLACES ±		0.2		INITIAL REVISION:					
1 PLACE ±				DRWN: COMERCI		1997/08/21			
0 PLACES ±				APPR: KPRASAD		2009/02/09			
ANGULAR TOL ±		0.5 °		DRAFT WHERE APPLICABLE MUST REMAIN WITHIN DIMENSIONS		THIRD ANGLE PROJECTION		DRAWING SERIES	
				D-SIZE		43915		MATERIAL NUMBER CUSTOMER	
				SEE CHART		GENERAL MARKET		SHEET NUMBER	
				1 OF 2					

**molex**

VERTICAL HEADER  
DUAL ROW, 6-14 CIRCUIT MINI-FIT SR.

PRODUCT CUSTOMER DRAWING

DOCUMENT NUMBER: **SD-43915-002**    DOC TYPE: PSD    DOC PART: 001    REVISION: F

