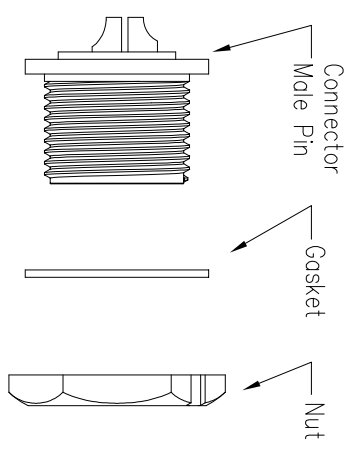
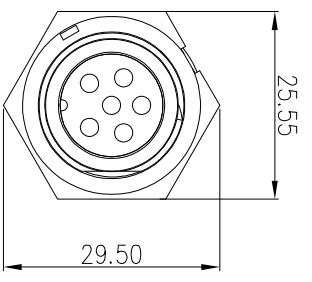
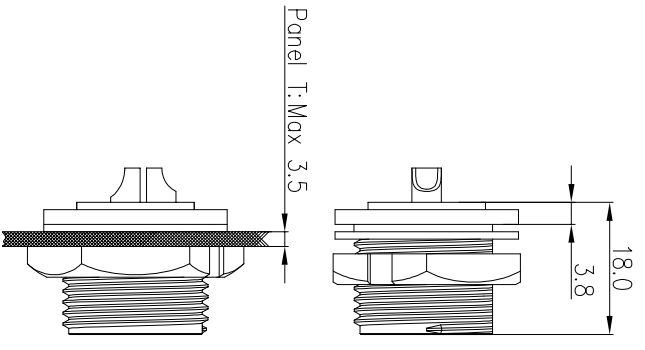
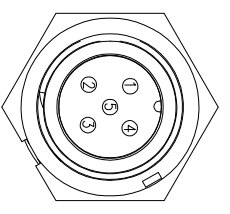


Recommended Panel Cut-Out



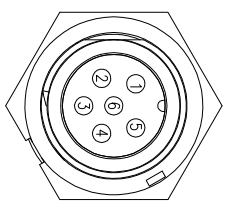
23XXX515-01

Pin Number



5 Pin

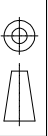
P/N: 23005515-01



6 Pin

P/N: 23006515-01

Pin Assignments Front View



UNIT: mm	
TOLERANCE	
.X	± 0.25
.XX	± 0.15
.XXX	± 0.05
ANGLES	$\pm 1'$

DESCRIPTION

Middle Series Screw Front Mount With Male Pin			
SCALE	1:1	SHEET	1 OF 1
REV	C1	SIZE	A4
* : Inspection Item			

CHOGORI

PART NO 23XXX515-01

DRAWN BY Liu

DATE 2019/08/13

DWG NO

CHECKED BY Mo

DATE 2019/08/13

CUSTOMER

APPROVED BY Panson

DATE 2019/08/13

REV.	EN. NO.	DESCRIPTION	SIGN	DATE
C1	N/A	INITIAL DRAWING	Liu	2019/08/13

Specification:

1. Operation Temperature: $-45^{\circ}\text{C} \sim 105^{\circ}\text{C}$.
2. Insulation Resistance: $100\text{M}\Omega$ at DC500V.
3. Contact Resistance: $<10\text{m}\Omega$.
4. Withstand Voltage: 1500V AC
5. Operating Current: 10A
6. Operating Voltage: AC 125V
7. Waterproof Rate: IP67 (Mated)
8. Housing: Nylon, Black
9. Male Pin: Copper Alloy, Gold Plated
10. Gasket: Silicon Gray
11. Panel Nut: Nylon, Black
12. Torque Rate: $0.8 \sim 1.0\text{N}\cdot\text{m}$
13. RoHS Compliant.
14. UL Compliant.
15. Mating Cap P/N: 806-00021-00