

LPR | Levers for PR-CH flush pull handles

Steel or stainless steel

GN 115 | Levers for GN 115.10 latches

Steel

- 1
- 2
- 3
- 4
- 5
- 6
- 7
- 8
- 9
- 10
- 11
- 12
- 13
- 14
- 15
- 16
- 17
- 18



STANDARD EXECUTIONS

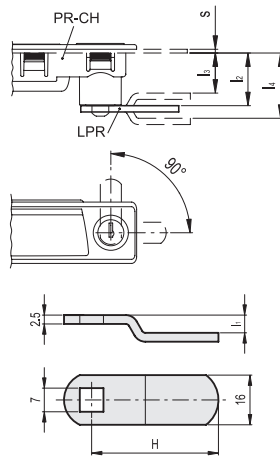
- LPR: zinc-plated steel lever.
- LPR-SST: AISI 304 stainless steel lever.

MATERIAL

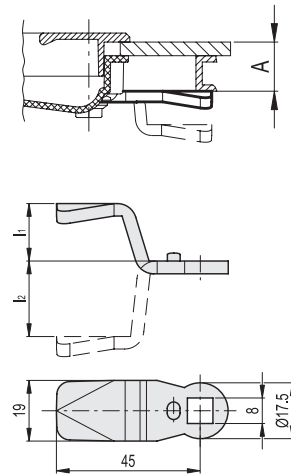
Zinc-plated steel.



Assembly on handle PR-CH



Assembly on handle GN 115.10



Conversion Table			
1 mm = 0.039 inch			
H			
mm	inch	mm	inch
17.5	0.69	32	1.26
19.8	0.78	32.5	1.28
22	0.87	33	1.30
24.5	0.96	34.5	1.36
26.5	1.04	35.5	1.40
27.8	1.09	45	1.77
30	1.18	46	1.81

LPR

METRIC

Code	Description	H	l1	s+l2	s+l3	s+l4	⚖️
421041	LPR-0-17	17.5	0	23.2	-	-	7
421045	LPR-0-22	22	0	23.2	-	-	8
421049	LPR-0-32	32	0	23.2	-	-	11
421053	LPR-0-46	46	0	23.2	-	-	15
421057	LPR-2-24	24.5	2	-	21.2	25.2	8
421061	LPR-2-28	27.8	2	-	21.2	25.2	10
421065	LPR-2-34	34.5	2	-	21.2	25.2	11
421069	LPR-5-30	30	5	-	18.2	28.2	10
421073	LPR-5-33	33	5	-	18.2	28.2	11
421077	LPR-5-35	35.5	5	-	18.2	28.2	12
421081	LPR-8-32	32.5	8	-	15.2	31.2	13
421085	LPR-12-26	26.5	12	-	11.2	35.2	12

METRIC

Code	Description	l1	l2	A	⚖️
GN.39101	GN 115-2.1-4	14	-	4	30
GN.39103	GN 115-2.1-6	12	-	6	28
GN.39105	GN 115-2.1-8	10	-	8	26
GN.39107	GN 115-2.1-10	8	-	10	24
GN.39109	GN 115-2.1-13	5	-	13	21
GN.39111	GN 115-2.1-14	4	-	14	20
GN.39113	GN 115-2.1-16	2	-	16	18
GN.39115	GN 115-2.1-18	0	0	18	16
GN.39117	GN 115-2.1-20	-	2	20	18
GN.39119	GN 115-2.1-22	-	4	22	20
GN.39121	GN 115-2.1-24	-	6	24	22
GN.39123	GN 115-2.1-26	-	8	26	24
GN.39125	GN 115-2.1-28	-	10	28	26
GN.39127	GN 115-2.1-30	-	12	30	28
GN.39129	GN 115-2.1-32	-	14	32	30
GN.39131	GN 115-2.1-34	-	16	34	32
GN.39133	GN 115-2.1-36	-	18	36	34
GN.39135	GN 115-2.1-38	-	20	38	36
GN.39137	GN 115-2.1-40	-	22	40	38
GN.39139	GN 115-2.1-42	-	24	42	40
GN.39141	GN 115-2.1-45	-	27	45	43
GN.39143	GN 115-2.1-50	-	32	50	48

LPR-SST



Code	Description	H	l1	s+l2	s+l3	s+l4	⚖️
421046	LPR-0-20-SST	19.8	0	23.2	-	-	8
421050	LPR-0-32-SST	32	0	23.2	-	-	11
421054	LPR-0-46-SST	46	0	23.2	-	-	15
421068	LPR-0-45-SST	45	3	-	20.2	26.2	15

Latches