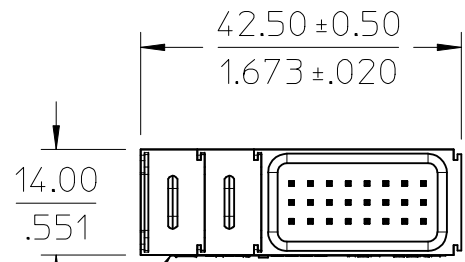
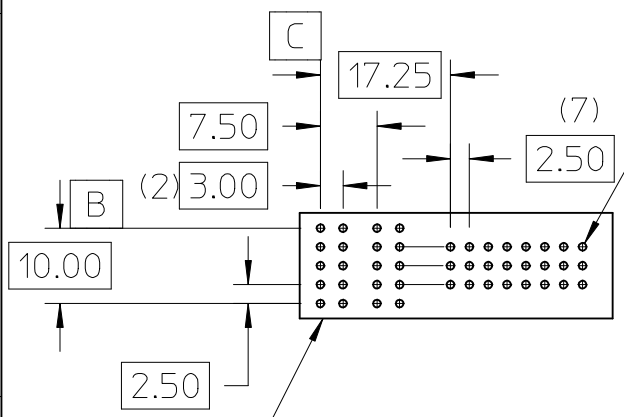
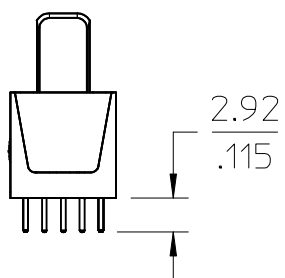
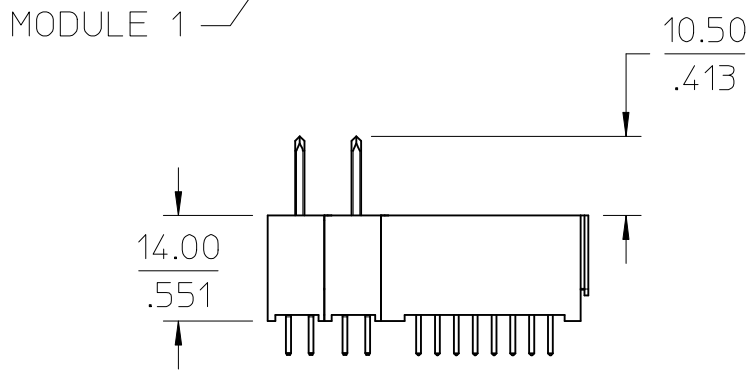


6 5 4 3 2 1

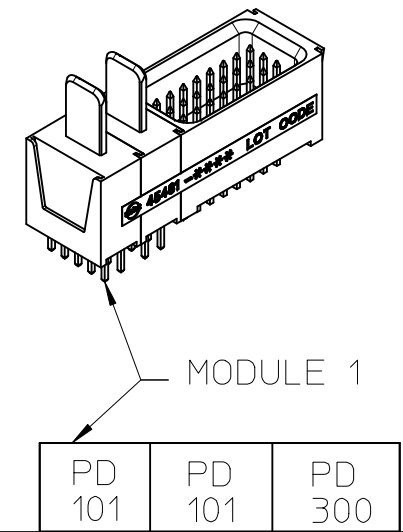


- NOTES:
1. MATERIAL: LCP, GLASS FILLED, UL94V-0, BLACK
 2. FINISH: SELECT GOLD 30 M.I.MIN
SELECT TIN 100 M.I.MIN
BOTH OVER NICKEL
 3. PRODUCT SPECIFICATION: PS-45424-001
 4. PACKAGING SPECIFICATION: PK-45481-001
 5. THIS PART CONFORMS TO CLASS B REQUIREMENTS OF COSMETIC SPEC PS-45499-002



$\phi 1.02 \pm 0.05$
 $\phi 0.05 \text{ (M) ABC}$

PCB LAYOUT: COMPONENT SIDE
 PCB THICKNESS: 1.57/.062 MIN.
 PCB TOLERANCE: ±0.05/.002



INITIAL RELEASE	2013/04/11
EC NO: UCP2013-4396	
DRWN: JSCHAFFER	
CHKD: APATEL	
APPR: APATEL	2013/04/12
DESCRIPTION	
1	

QUALITY SYMBOLS	≠0
	≠0
	≠0

GENERAL TOLERANCES (UNLESS SPECIFIED)		
	mm	INCH
4 PLACES	± ---	± ---
3 PLACES	± ---	± ---
2 PLACES	± 0.13	± ---
1 PLACE	± 0.25	± ---
0 PLACE	± ---	± ---
ANGULAR ± 1/2°		
DRAFT WHERE APPLICABLE MUST REMAIN WITHIN DIMENSIONS		

DIMENSION STYLE	
MM ONLY	
DRAWN BY	DATE
JSCHAFFER	2013/04/11
CHECKED BY	DATE
APPROVED BY	DATE
APATEL	2013/04/12
MATERIAL NO.	
45481-0286	
SIZE	A

SCALE	DESIGN UNITS	THIRD ANGLE PROJECTION
1:1	METRIC	
TITLE		
POWER DOCK ASSEMBLY POWER VERTICAL SOLDER TAIL		
molex		
DOCUMENT NO.	SHEET NO.	
SD-45481-0286	1 OF 1	

5 4 3 2 1