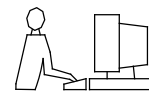
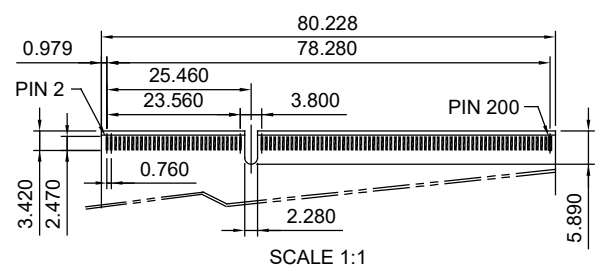
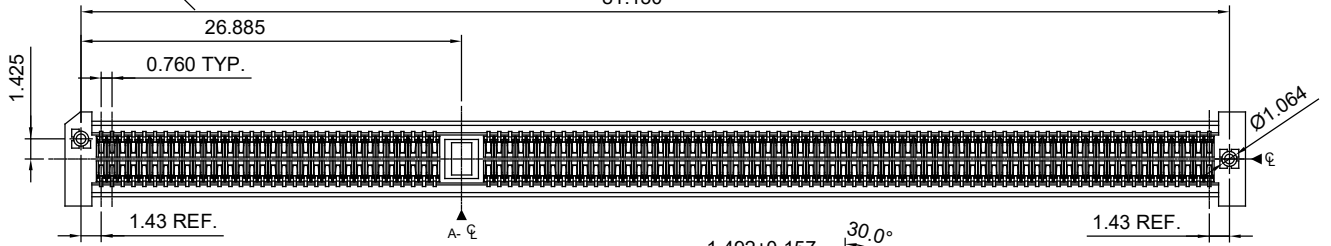
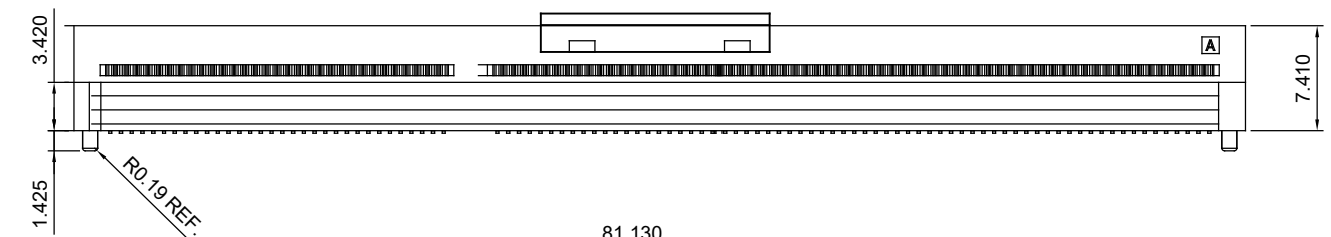
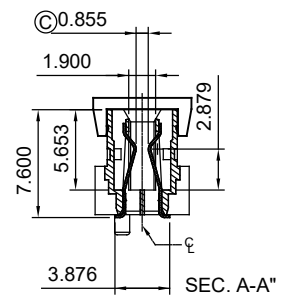
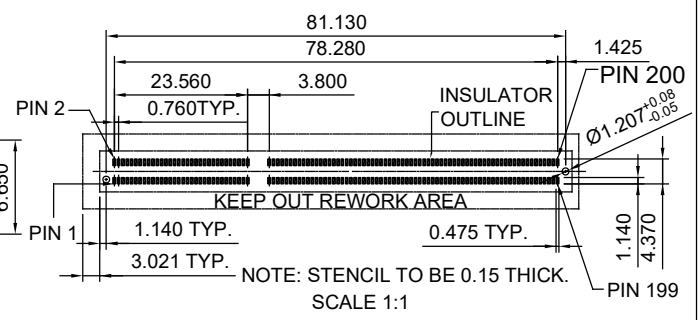
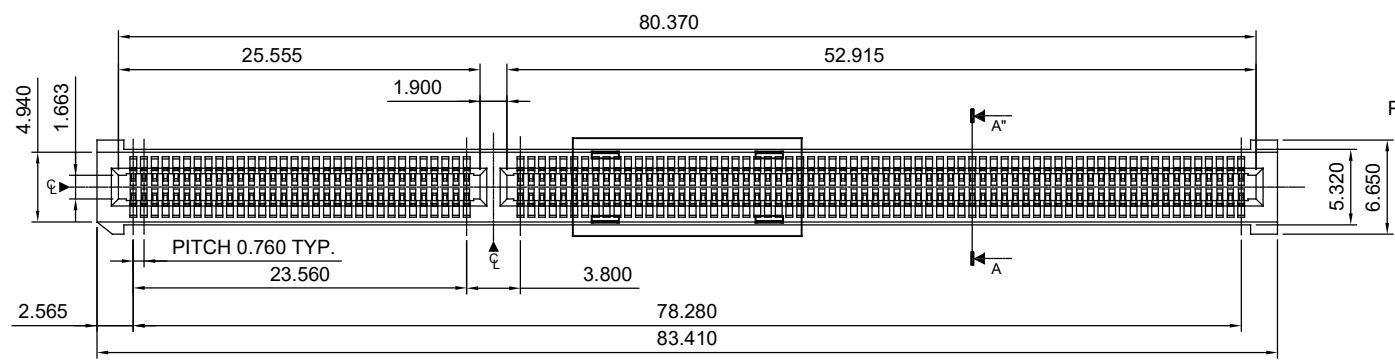


TOLERANCE UNLESS OTHERWISE SPECIFIED	
.X	±0.25
.XX	±0.15
.XXX	±0.10

THIS IS A C.A.D. GENERATED DRAWING  
DO NOT MAKE MANUAL REVISIONS TO MASTER.

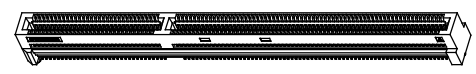


ISSUE NUMBER  
ORIGINAL (1)



NOTES:

- MATERIAL: INSULATOR THERMOPLASTIC, UL-94V-0  
HOUSING: COPPER ALLOY  
CONTACT: GOLD FLASH PLATING ON CONTACT AREA  
MATTE TIN PLATING ON SOLDER TAIL OVER NICKEL UNDER PLATING
- MARKED CRITICAL DIMENSION  
MARKED DIMENSIONS NEED TO BE MEASURED IN CPK



<p align="center"><b>CARD EDGE, FEMALE, SMT, 200 CONTACTS WITH KEY</b></p>		ACAD REFERENCE NO.: 370-200-229-002	
		DRAWN: W.T	DATE: JUNE.28 /2018
EDAC INC TORONTO, ONTARIO CANADA YOUR CONNECTION TO QUALITY & SERVICE		CHECKED: DATE:	
		SCALE: N.T.S	SHEET 1 OF 1
<p>THESE DRAWINGS AND SPECIFICATIONS ARE THE PROPERTY OF EDAC INC., AND SHALL NOT BE REPRODUCED, OR COPIED OR USED AS THE BASIS FOR THE MANUFACTURE OR SALE OF APPARATUS WITHOUT WRITTEN PERMISSION.</p>		DRAWING NUMBER: 370-200-229-002	ISSUE 1
		PART NUMBER: 370-200-229-002	

THIS SERIES FULLY CONFORMS TO THE EUROPEAN UNION DIRECTIVES 2011/65/EU FOR RoHS COMPLIANCY.