
PRODUCT / PROCESS CHANGE NOTIFICATION**PCN NO: PCN IN 210325-01**

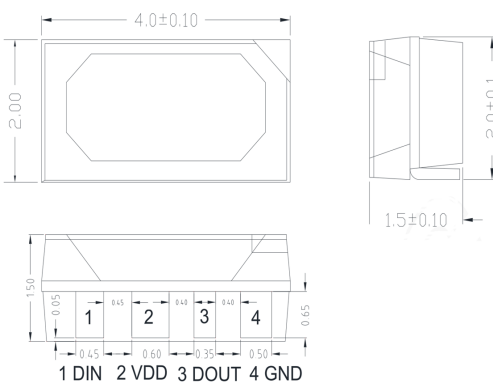
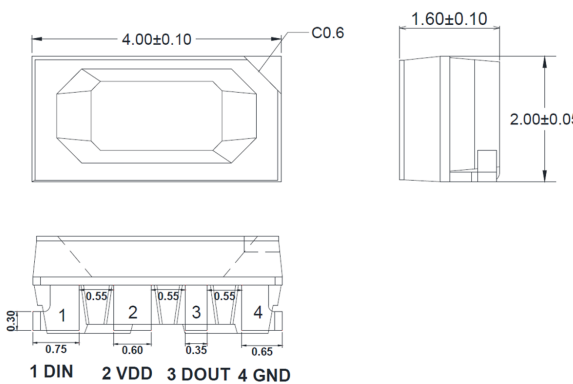

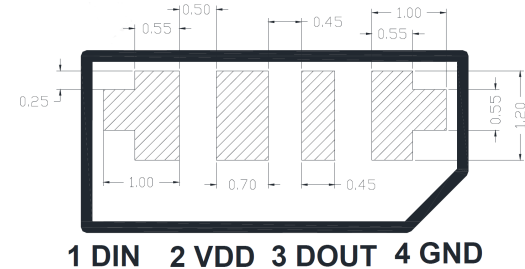
Issue Date: April 15th, 2021**SUBJECT OF CHANGE:****Change of IC and Lead frame.****PRODUCTS AFFECTED:**

IN-PI42TAS(X)R(X)G(X)B

PRODUCT SPEC NUMBER:

IN-PI42TASPRPGPB	IN-PI42TASPRPGPB-7295
IN-PI42TAS5R5G5B	IN-PI42TASPRPGPB-7426
IN-PI42TASPRPGPB-7265	IN-PI42TASPRPGPB-7716

REASON OF CHANGE:**Product enhancement for reliability and light efficacy.****DESCRIPTION OF CHANGE:** **Major Change** **Minor Change****Change the IC and Lead-frame to enhance the product reliability and light efficacy.**

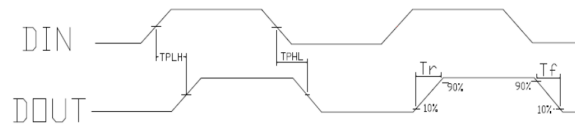
Before	After																																																																																																									
Mechanical Dimension	Mechanical Dimension																																																																																																									
 <p>1 DIN 2 VDD 3 DOUT 4 GND</p>	 <p>1 DIN 2 VDD 3 DOUT 4 GND</p>																																																																																																									
Soldering Pattern	Soldering Pattern																																																																																																									
 <p>1 DIN 2 VDD 3 DOUT 4 GND</p>	 <p>1 DIN 2 VDD 3 DOUT 4 GND</p>																																																																																																									
Electrical parameters (Ta=25°C, VSS=0V)	Electrical parameters (Ta=25°C, VSS=0V)																																																																																																									
<table border="1"> <thead> <tr> <th>Parameter</th> <th>Symbol</th> <th>Range</th> <th>Unit</th> </tr> </thead> <tbody> <tr> <td>Logic supply voltage</td> <td>V_{DD}</td> <td>+3.5~+5.5</td> <td>V</td> </tr> <tr> <td>Logic input voltage</td> <td>V_{IN}</td> <td>V_{DD}+0.5</td> <td>V</td> </tr> <tr> <td>Operating temperature</td> <td>T_{OPT}</td> <td>-45 to +85</td> <td>°C</td> </tr> <tr> <td>Storage temperature</td> <td>T_{STG}</td> <td>-50 to +150</td> <td>°C</td> </tr> <tr> <td>ESD pressure</td> <td>V_{ESD}</td> <td>4K</td> <td>V</td> </tr> </tbody> </table>	Parameter	Symbol	Range	Unit	Logic supply voltage	V _{DD}	+3.5~+5.5	V	Logic input voltage	V _{IN}	V _{DD} +0.5	V	Operating temperature	T _{OPT}	-45 to +85	°C	Storage temperature	T _{STG}	-50 to +150	°C	ESD pressure	V _{ESD}	4K	V	<table border="1"> <thead> <tr> <th>Parameter</th> <th>Symbol</th> <th>Range</th> <th>Unit</th> </tr> </thead> <tbody> <tr> <td>Logic supply voltage</td> <td>V_{DD}</td> <td>+3.7~+5.5</td> <td>V</td> </tr> <tr> <td>Logic input voltage</td> <td>V_{IN}</td> <td>-0.5~V_{DD}+0.5</td> <td>V</td> </tr> <tr> <td>Operating temperature</td> <td>T_{OPT}</td> <td>-40 to +85</td> <td>°C</td> </tr> <tr> <td>Storage temperature</td> <td>T_{STG}</td> <td>-40 to +85</td> <td>°C</td> </tr> <tr> <td>ESD pressure</td> <td>V_{ESD}</td> <td>2K</td> <td>V</td> </tr> </tbody> </table>	Parameter	Symbol	Range	Unit	Logic supply voltage	V _{DD}	+3.7~+5.5	V	Logic input voltage	V _{IN}	-0.5~V _{DD} +0.5	V	Operating temperature	T _{OPT}	-40 to +85	°C	Storage temperature	T _{STG}	-40 to +85	°C	ESD pressure	V _{ESD}	2K	V																																																									
Parameter	Symbol	Range	Unit																																																																																																							
Logic supply voltage	V _{DD}	+3.5~+5.5	V																																																																																																							
Logic input voltage	V _{IN}	V _{DD} +0.5	V																																																																																																							
Operating temperature	T _{OPT}	-45 to +85	°C																																																																																																							
Storage temperature	T _{STG}	-50 to +150	°C																																																																																																							
ESD pressure	V _{ESD}	4K	V																																																																																																							
Parameter	Symbol	Range	Unit																																																																																																							
Logic supply voltage	V _{DD}	+3.7~+5.5	V																																																																																																							
Logic input voltage	V _{IN}	-0.5~V _{DD} +0.5	V																																																																																																							
Operating temperature	T _{OPT}	-40 to +85	°C																																																																																																							
Storage temperature	T _{STG}	-40 to +85	°C																																																																																																							
ESD pressure	V _{ESD}	2K	V																																																																																																							
The IC electrical parameters	The IC electrical parameters																																																																																																									
<table border="1"> <thead> <tr> <th>Parameter</th> <th>Symbol</th> <th>Min.</th> <th>Typ.</th> <th>Max</th> <th>Unit</th> <th>Test conditions</th> </tr> </thead> <tbody> <tr> <td>Supply voltage</td> <td>V_{DD}</td> <td>-</td> <td>5.2</td> <td>-</td> <td>V</td> <td>-</td> </tr> <tr> <td>R/G/B port pressure</td> <td>V_{DS, MAX}</td> <td>-</td> <td>-</td> <td>26</td> <td>V</td> <td>-</td> </tr> <tr> <td>DOUT drive capability</td> <td>I_{DOH}</td> <td>-</td> <td>49</td> <td>-</td> <td>mA</td> <td>maximum source current</td> </tr> <tr> <td>DOUT drive capability</td> <td>I_{DOL}</td> <td>-</td> <td>-50</td> <td>-</td> <td>mA</td> <td>maximum sink current</td> </tr> <tr> <td>High level input voltage</td> <td>V_{HI}</td> <td>0.7*VDD</td> <td>-</td> <td>-</td> <td>V</td> <td>VDD=5.0V</td> </tr> <tr> <td>Low level input voltage</td> <td>V_{LI}</td> <td>-</td> <td>-</td> <td>0.3*VDD</td> <td>V</td> <td>VDD=5.0V</td> </tr> <tr> <td>The frequency of PWM</td> <td>F_{PWM}</td> <td>-</td> <td>1.2</td> <td>-</td> <td>KHZ</td> <td>-</td> </tr> <tr> <td>Static power consumption</td> <td>I_{DD}</td> <td>-</td> <td>1</td> <td>-</td> <td>mA</td> <td>-</td> </tr> </tbody> </table>	Parameter	Symbol	Min.	Typ.	Max	Unit	Test conditions	Supply voltage	V _{DD}	-	5.2	-	V	-	R/G/B port pressure	V _{DS, MAX}	-	-	26	V	-	DOUT drive capability	I _{DOH}	-	49	-	mA	maximum source current	DOUT drive capability	I _{DOL}	-	-50	-	mA	maximum sink current	High level input voltage	V _{HI}	0.7*VDD	-	-	V	VDD=5.0V	Low level input voltage	V _{LI}	-	-	0.3*VDD	V	VDD=5.0V	The frequency of PWM	F _{PWM}	-	1.2	-	KHZ	-	Static power consumption	I _{DD}	-	1	-	mA	-	<table border="1"> <thead> <tr> <th>Parameter</th> <th>Symbol</th> <th>Min.</th> <th>Typ.</th> <th>Max</th> <th>Unit</th> <th>Test conditions</th> </tr> </thead> <tbody> <tr> <td>Supply voltage</td> <td>V_{DD}</td> <td>-</td> <td>5.2</td> <td>-</td> <td>V</td> <td>-</td> </tr> <tr> <td>High level input voltage</td> <td>V_{HI}</td> <td>0.7*VDD</td> <td>-</td> <td>-</td> <td>V</td> <td>VDD=5.0V</td> </tr> <tr> <td>Low level input voltage</td> <td>V_{LI}</td> <td>-</td> <td>-</td> <td>0.3*VDD</td> <td>V</td> <td>VDD=5.0V</td> </tr> <tr> <td>The frequency of PWM</td> <td>F_{PWM}</td> <td>-</td> <td>1.2</td> <td>-</td> <td>KHZ</td> <td>-</td> </tr> <tr> <td>Static power consumption</td> <td>I_{DD}</td> <td>-</td> <td>1</td> <td>-</td> <td>mA</td> <td>-</td> </tr> </tbody> </table>	Parameter	Symbol	Min.	Typ.	Max	Unit	Test conditions	Supply voltage	V _{DD}	-	5.2	-	V	-	High level input voltage	V _{HI}	0.7*VDD	-	-	V	VDD=5.0V	Low level input voltage	V _{LI}	-	-	0.3*VDD	V	VDD=5.0V	The frequency of PWM	F _{PWM}	-	1.2	-	KHZ	-	Static power consumption	I _{DD}	-	1	-	mA	-
Parameter	Symbol	Min.	Typ.	Max	Unit	Test conditions																																																																																																				
Supply voltage	V _{DD}	-	5.2	-	V	-																																																																																																				
R/G/B port pressure	V _{DS, MAX}	-	-	26	V	-																																																																																																				
DOUT drive capability	I _{DOH}	-	49	-	mA	maximum source current																																																																																																				
DOUT drive capability	I _{DOL}	-	-50	-	mA	maximum sink current																																																																																																				
High level input voltage	V _{HI}	0.7*VDD	-	-	V	VDD=5.0V																																																																																																				
Low level input voltage	V _{LI}	-	-	0.3*VDD	V	VDD=5.0V																																																																																																				
The frequency of PWM	F _{PWM}	-	1.2	-	KHZ	-																																																																																																				
Static power consumption	I _{DD}	-	1	-	mA	-																																																																																																				
Parameter	Symbol	Min.	Typ.	Max	Unit	Test conditions																																																																																																				
Supply voltage	V _{DD}	-	5.2	-	V	-																																																																																																				
High level input voltage	V _{HI}	0.7*VDD	-	-	V	VDD=5.0V																																																																																																				
Low level input voltage	V _{LI}	-	-	0.3*VDD	V	VDD=5.0V																																																																																																				
The frequency of PWM	F _{PWM}	-	1.2	-	KHZ	-																																																																																																				
Static power consumption	I _{DD}	-	1	-	mA	-																																																																																																				

Switching characteristics

Parameter	Symbol	Min.	Typ.	Max	Unit	Test conditions
The speed of data transmission	F_{DIN}	-	800	-	KHZ	
DOUT transmission delay	T_{PLH}	-	-	500	ns	DIN→DOUT
	T_{PHL}	-	-	500	ns	
IOUt Rise/Drop Time	T_r	-	100	-	ns	VDS=1.5 IOUt=13mA
	T_f	-	100	-	ns	

Switching characteristics

Parameter	Symbol	Min.	Typ.	Max	Unit	Test conditions
The speed of data transmission	F_{DIN}	-	800	-	KHZ	The duty ratio of 67% (data 1)
DOUT transmission delay	T_{PLH}	-	67	-	ns	DIN→DOUT
	T_{PHL}	-	82	-	ns	
Out R/B conversion time	T_r	-	22	-	ns	IOUt R / B=5mA/13mA, out R / B port connected with 200 Ω resistor to VDD in series, load capacitance to ground IOUt G = 5mA/13mA, out G port is connected with 200 Ω resistor to VDD in series, and the load capacitance to ground is 30pf
	T_f	-	75	-	-	
Out R/B conversion time	T_r	-	18	-	ns	
	T_f	-	110	-	-	



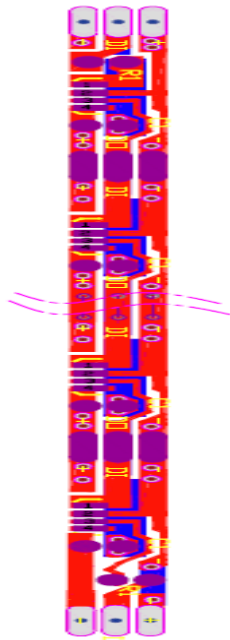
The data transmission time

Name	Description	Min.	Typ. value	Max.	Unit
T	Period	1.2	-	-	μs
T0H	0 code, high level time	0.2	0.32	0.4	μs
T0L	0 code, low level time	0.8	-	-	μs
T1H	1 code, high level time	0.62	0.64	1.0	μs
T1L	1 code, low level time	0.2	-	-	μs
Trst	Reset code, low level time	>80	-	-	μs

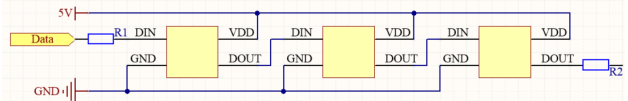
The data transmission time

Name	Min.	Standard value	Max.	Unit
T	1.20	--	--	μs
T0H	0.20	0.30	0.40	μs
T0L	0.80	--	--	μs
T1H	0.70	0.90	1.00	μs
T1L	0.20	--	--	μs
Trst	200	--	--	μs

The typical application circuit



The typical application circuit





PRODUCT IDENTIFICATION TO INDICATE CHANGE:

Dimension: Refer to the drawing.

Specification: No Change

Material: IC & Lead-frame change

Datasheet: Update to new version

Please note this is IC and Lead-frame change PCN due to product reliability and efficacy enhancement. Replacement material will have the same optical and electrical specification. All reliability specifications remain the same.

DATE OF LAST TIME BUY OF ORIGINAL VERSION:

May 31st, 2021

DATECODE OF CHANGE:

June 1st, 2021

DATE TO BEGIN SHIPPING:

June 1st, 2021

ASSESSMENT:

In case of any questions please contact us at:

Issue By	Department	Telephone	Ext.	Fax
William Chang	TM	+1-408-8843871		+1-408-8449618
Holton Lee	GM	+1-408-8449698		+1-408-8449618



CUSTOMER FEEDBACK FORM
to INOLUX PCN

Inolux Corporation Change of IC and Lead-frame In Package

Dear Customer,

Your feedback is very much appreciated and will help us to realize this change without problems.
Thank you for your help.

Please tick and comment.

We agree with this change and the schedule.

We have the following objections :

In addition, we need the following information:

We need samples.

Type:

Quantity:

Special requirement:

Purpose of sample order:

Please feedback to: Inolux Corporation

Customer Representative's name:

FAX No.: +1-408-8449618

Phone: +1-408-8843871

Name: Mr. William Chang

.....

Address: 3350 Scott Blvd.

Suite 4102

Santa Clara, CA,USA.

**Date/Customer Representative's
Signature**