

Feed-through terminal for direct mount, Screw connection, Mounting type: Mounting surface, Rated cross-section: 2.5 mm<sup>2</sup>, Width: 5 mm, Colour: Blue

### Business data

Packaging unit	100
Quantity unit	PC
Weight per piece (not including packaging)	3.4 g
Weight per piece (including packaging)	3.78 g
Unit of weight	G
Customs number	85369010
Country of origin	DE
Prio-Article	1320.2
Product description	Feed-through terminal for direct mount

1320.5

BKA 2,5/1 BU

---

## Technical data

---

### Dimensions

---

Length	22 mm
Width	5 mm
Height	23 mm
Pitch	5 mm

---

### Ratings

---

Rated voltage	400 V
Rated current	24 A
Rated cross-section	2.5 mm <sup>2</sup>
Rated impulse voltage	6 kV
Overvoltage category	III
Contamination degree	3
Maximum power dissipation for nominal condition	0.77 W

---

### Technical data

#### Connection data

Connection principle	Screw connection
Connection position	Lateral
Connections	2
Number of terminals per level	2
Number of levels	1
Wire cross-section single-core (rigid) / stranded, min.	0.2 mm <sup>2</sup>
Wire cross-section single core (rigid)/stranded, max.	4 mm <sup>2</sup>
Wire cross-section stranded, min.	0.2 mm <sup>2</sup>
Wire cross-section stranded, max.	4 mm <sup>2</sup>
Wire cross-section stranded with wire-end ferrules, min.	0.2 mm <sup>2</sup>
Wire cross-section stranded with wire-end ferrules, max.	2.5 mm <sup>2</sup>
Wire cross-section AWG, min.	22
Wire cross-section AWG, max.	12
Stripping length	7 mm
Screw head	Slotted
Screw threading	M 2,5
Tightening torque, min.	0.4 Nm
Tightening torque, max.	0.8 Nm

#### Materials

Insulation housing	Polyamide 6.6
Flammability class UL 94	V-2
Working temperature, min.	-40 °C
Working temperature, max.	105 °C

#### Further technical data

Mounting type	Mounting face
Gauge plug acc. to EN 60 947-1	A3
End plate required	✓

#### Print

Colour	Blue
--------	------

# Data sheet

1320.5

BKA 2,5/1 BU



---

## Technical data

---

### Environmental Product Compliance

---

REACH Conform	yes
REACH Reference date	2022-01-17
REACH Candidate Substance Note	No
RoHS Conform	yes

---

### Approvals

#### Standards and regulations

EAC approval	TR ZU 004/2011
EAC approval granted	yes

#### cUL Recognized

cUL approval	C22.2 No 158
cUL Usegroup B: rated voltage	300 V
cUL Usegroup B: rated current	20 A
cUL Usegroup C: rated voltage	300 V
cUL Usegroup C: rated current	20 A
cUL wire cross-section single-core (rigid) AWG, min.	22
cUL wire cross-section single-core (rigid) AWG, max.	12
cUL wire cross-section stranded AWG, min.	22
cUL wire cross-section stranded AWG, max.	12
cUL torque	5.3 Nm
cUL wire material	Cu
cUL Recognized	yes

#### KEMA KEUR approval

KEMA KEUR approval	EN 60947-7-1:2009
KEMA KEUR approval granted	yes
KEMA rated voltage	400 V
KEMA rated current	24 A
KEMA rated impulse voltage	6 kV
KEMA wire cross-section single core (rigid), min.	0.2 mm <sup>2</sup>
KEMA wire cross-section single-core (rigid), max.	4 mm <sup>2</sup>
KEMA wire cross-section stranded, min.	0.2 mm <sup>2</sup>
KEMA wire cross-section stranded, max.	4 mm <sup>2</sup>
KEMA torque, min.	0.4 Nm
KEMA torque, max.	0.8 Nm

---

### Approvals

---

#### UL Recognized

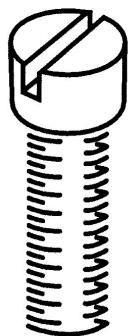
---

UL approval	UL 1059
UL Usegroup B: rated voltage	300 V
UL Usegroup B: rated current	20 A
UL Usegroup C: rated voltage	300 V
UL Usegroup C: rated current	20 A
UL wire cross-section single-core (rigid) AWG, min.	22
UL wire cross-section single-core (rigid) AWG, max.	12
UL wire cross-section stranded AWG, min.	22
UL wire cross-section stranded AWG, max.	12
UL torque	5.3 Lb In
UL wire material	Cu
UL factory wiring	yes
UL field wiring	yes
UL Recognized	yes

---

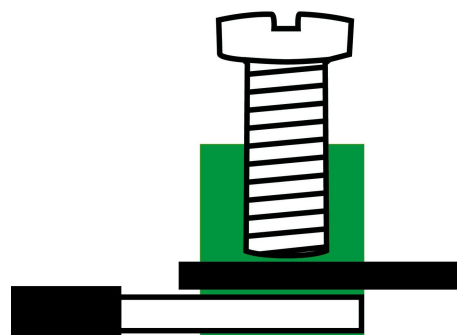
### Media

# M2.5



# C **RU** <sup>®</sup> US

# EAC



# Data sheet

1320.5

BKA 2,5/1 BU



---

## Accessories

---



1320.5

BKA 2,5/1 BU

## Insulated external cross-connector



External insulated cross-connector, No. of poles: 10, Mounting type: Plug in, Width: 50.1 mm, Rated current: 27 A; Colour: Yellow

### General order data

Product number:	Article name	GTIN (EAN)	Packaging unit
2045.0	AQI 10/5/11 YE	4044211048501	10 ST



External insulated cross-connector, No. of poles: 3, Mounting type: Plug in, Width: 14.36 mm, Rated current: 27 A; Colour: Yellow

### General order data

Product number:	Article name	GTIN (EAN)	Packaging unit
2033.0	AQI 3/5/11 YE	4044211048358	50 ST



External insulated cross-connector, No. of poles: 2, Mounting type: Plug in, Width: 9.26 mm, Rated current: 27 A; Colour: Yellow

### General order data

Product number:	Article name	GTIN (EAN)	Packaging unit
2032.0	AQI 2/5/11 YE	4044211048341	50 ST

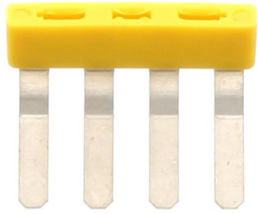
1320.5

BKA 2,5/1 BU

---

## Insulated external cross-connector

---



External insulated cross-connector, No. of poles: 4, Mounting type: Plug in, Width: 19.46 mm, Rated current: 27 A; Colour: Yellow

---

### General order data

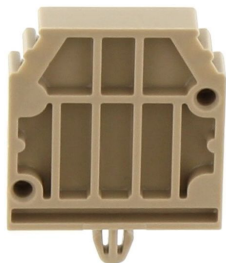
Product number:	Article name	GTIN (EAN)	Packaging unit
2044.0	AQI 4/5/11 YE	4044211048495	50 ST

---

1320.5

BKA 2,5/1 BU

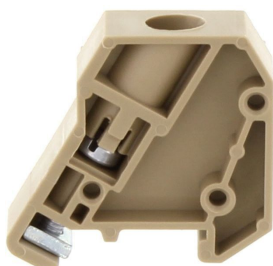
## End support



End support, Mounting type: Mounting surface, Width: 5 mm, Colour: Beige

### General order data

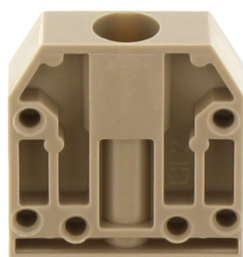
Product number:	Article name	GTIN (EAN)	Packaging unit
2147.2	EH 2/Z BG	4044211049683	50 ST



End support, Mounting type: Mounting rail TS 15/5.5, Width: 9 mm, Colour: Beige

### General order data

Product number:	Article name	GTIN (EAN)	Packaging unit
2945.2	EH 15 BG	4044211056728	50 ST



End support, Mounting type: Mounting surface, Width: 7 mm, Colour: Beige

### General order data

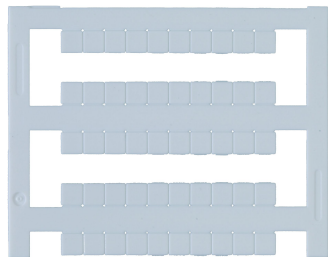
Product number:	Article name	GTIN (EAN)	Packaging unit
2136.2	EH 2 BG	4044211049553	50

Creation date 15.02.2022 08:07:38  
Subject to technical changes

1320.5

BKA 2,5/1 BU

## Quick marking



Terminal marker / Pocket Maxicard, Length: 5 mm, Width: 5 mm, Colour: White

## General order data

Product number:	Article name	GTIN (EAN)	Packaging unit
4600.7	PMC SB 5/50 WH	4044211088903	500 ST

## Screwdriver



Screwdriver with bare blade, Colour: Black-grey

## General order data

Product number:	Article name	GTIN (EAN)	Packaging unit
1085.0	SDB 0,5x3,0	4044211014643	1 ST