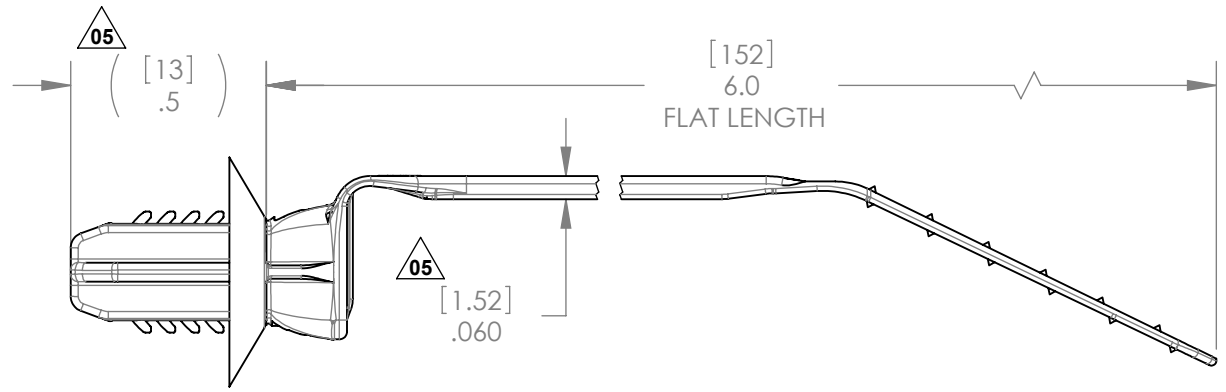
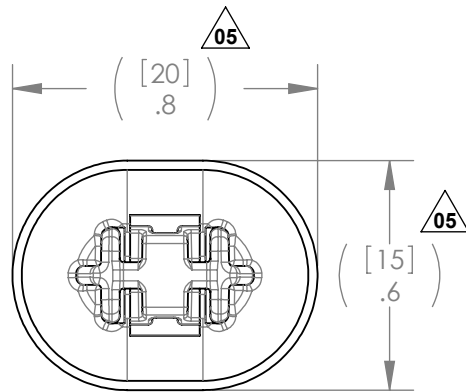
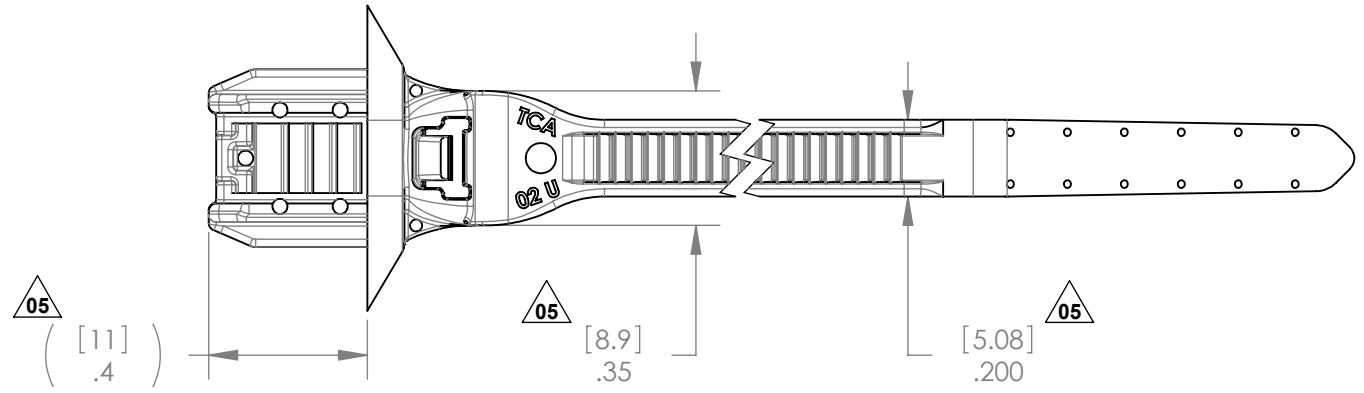


05

**PERFORMANCE REQUIREMENTS (REFERENCE):**

BASED ON PARTS TESTED AT 2% MOISTURE CONTENT

1. HOLE DIAMETER RANGE: 6.85MM X 11.85MM to 7.30MM X 12.30MM
2. PANEL THICKNESS RANGE: 0.6MM - 4.0MM.
3. FIR TREE PUSH IN FORCE: 12LBS MAX IN A 7.00MM X 12.00MM HOLE AND A SHEET METAL THICKNESS OF 1.8MM
4. FIR TREE PULL OUT FORCE: 45LBS MIN IN A 7.00MM X 12.00MM HOLE AND A SHEET METAL THICKNESS OF 1.8MM
5. CABLE TIE LOOP TENSILE STRENGTH: 50LBS MIN
6. MINIMUM BUNDLE DIAMETER: 1.6MM
7. MAXIMUM BUNDLE DIAMETER: 35MM



INVENTORS

**HellermannTyton®**

ALL PROPRIETARY RIGHTS IN THE SUBJECT MATTER SHOWN ON THIS DRAWING ARE EXCLUSIVE PROPERTY OF HELLERMANNTYTON

name	date	city, state

REVISION

level	05
by	AAC
date	06/24/11
ECN #	011784
part level	A/C

DIMENSIONS

FOOTPRINTS  
 .xxx =  
 .xx =  $[\pm 0.1] / \pm 0.004$   
 .x =  $[\pm 0.2] / \pm 0.008$   
 NONE =  $[\pm 1.0] / \pm 0.04$   
 $\angle = \pm 0.5^\circ$   
 unless otherwise specified  
 units [millimeters]/inches

PART

number	T50SOSFT7X12U	phase	Production
name	RECTANGULAR FIR TREE CABLE TIE		
material	NYLON 6/6 HS BLACK		

DRAWING

format	AH	SW	2010	scale	2:1
version N	CAD				
computer file name	ct06-027-009CST_05	previous drawing number			
drawn	JJP	checked	GGG	approved	
date	03/07/2007	date	06/24/11	approved	
type	Customer	sheet	1 of 1		
number	CT06-027-009CST				