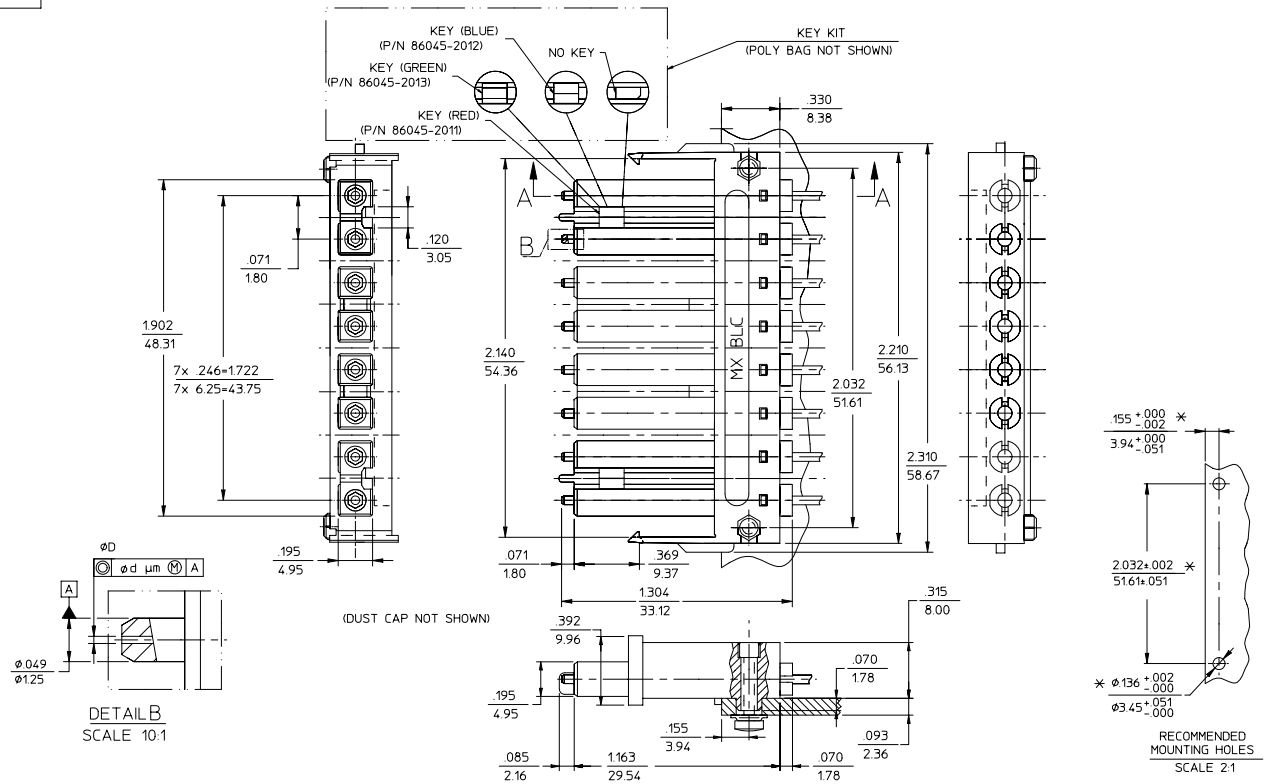


CONNECTOR P/N	øD (µm)	d (µm)	COLOR	CABLE TYPE
86046-2200	125.50 <sup>+0.50</sup> / <sub>0</sub>	0.5	RED	SINGLE MODE
86046-3000	127.00 <sup>+3.00</sup> / <sub>0</sub>	3.0	BLACK	MULTIMODE
86046-4200	125.00 <sup>+0.50</sup> / <sub>0</sub>	0.5	TAN	SINGLE MODE
86046-5000	126.00 <sup>+1.00</sup> / <sub>0</sub>	1.0	NATURAL	
86046-6200	125.25 <sup>+0.50</sup> / <sub>0</sub>	0.5	YELLOW	
86046-4210	125.2-125.5	0.5	LIGHT BLUE	
86046-4220	125.6-125.9	0.5	DARK BLUE	



DETAIL B  
SCALE 10:1

RECOMMENDED MOUNTING HOLES  
SCALE 2:1

- NOTES:
- ALL DIMENSIONS ARE GIVEN IN  $\frac{\text{INCHES}}{\text{mm}}$ .
  - ALL DIMENSIONS ARE FOR REFERENCE ONLY, EXCEPT WHEN MARKED WITH (\*).
  - KEYS ARE TO BE PACKAGED UNASSEMBLED WITH CONNECTOR IN POLY BAG.

ENTER DESCRIPTION EC NO: MF2002-1220 DRAWN: KPEVZNE#002/07/22 CHKD: SERNST 2002/07/22 APPR: IGUMIN 2002/07/23	QUALITY SYMBOLS	GENERAL TOLERANCES (UNLESS SPECIFIED)		SCALE 4:1	DESIGN UNITS INCH	THIRD ANGLE PROJECTION	REVISE ON CAD ONLY	
	DESCRIPTION REV ▲ - 0 ▽ - 0	mm	INCH	DIMENSION STYLE IN/MM		TITLE BLC CONNECTOR (8 POSITION)		
		4 PLACES ± --- ± ---	3 PLACES ± --- ± ---	DRAWN BY GK	DATE 08.11.98	MOLEX INCORPORATED MATERIAL NO. 86046-XXX0CD DOCUMENT NO. 1 OF 1		
		2 PLACES ± --- ± ---	1 PLACE ± --- ± ---	CHECKED BY	DATE			
ANGULAR ±1/2°		DRAFT WHERE APPLICABLE MUST REMAIN WITHIN DIMENSIONS		APPROVED BY IG	DATE 08.29.98	THIS DRAWING CONTAINS INFORMATION THAT IS PROPRIETARY TO MOLEX INCORPORATED AND SHOULD NOT BE USED WITHOUT WRITTEN PERMISSION		