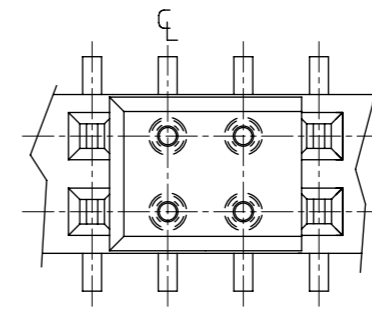
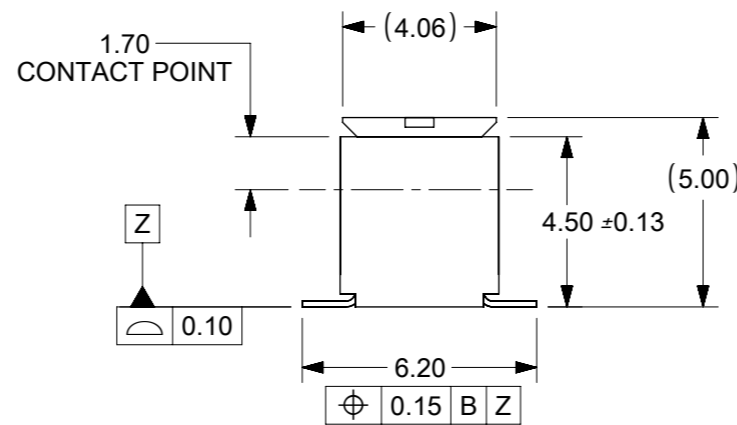
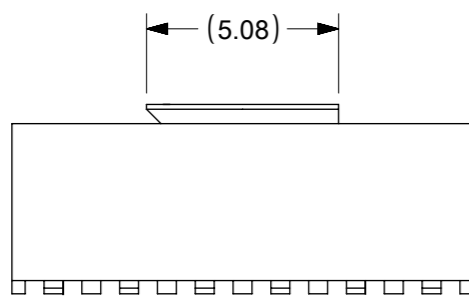


EVEN CIRCUIT SIZE  
CAP ORIENTATION  $\triangle 6$



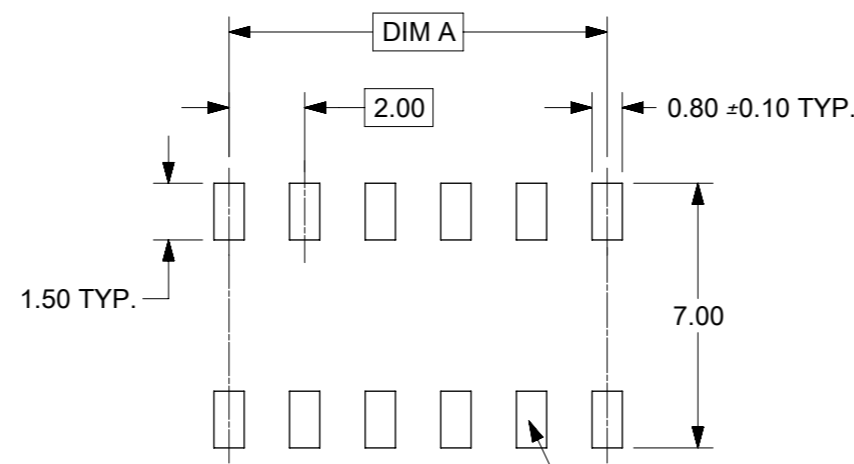
ODD CIRCUIT SIZE  
CAP ORIENTATION  $\triangle 6$



PART NUMBER LEGEND

87381 - \*\* 78

CKT SIZE



RECOMENDED PCB LAYOUT

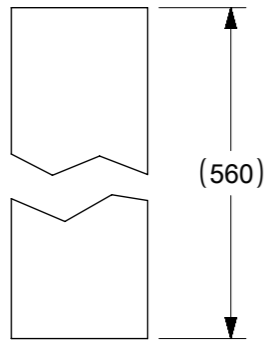
NOTES:

1. PLATING FINISH:  
0.38 $\mu$ m MIN. GOLD IN CONTACT AREA, 1.27 $\mu$ m MIN. TIN IN SOLDER TAIL AREA BOTH OVER NICKEL OVERALL
2. 30 CKT ILLUSTRATED FOR TAPE & REEL VERSION ON SHEET 2.
3. PRODUCT SPECIFICATION PS-87380 APPLIES
4. COPLANARITY OF SOLDER TAILS ARE TO BE MEASURED BY RESTING THE PART ON A FLAT GAUGE SURFACE.
5. TUBE PACKAGING STANDARD.
6. COVER IS PLACE INTO THE CORE HOLE AT THE CENTRE OF PART  
EVEN CKT -CENTRE 2 CKT (CENTRE LINE BETWEEN)  
ODD CKT -CENTRE 1 CKT (CENTRE LINE) SND 1CKT TO RIGHT.
7. PARTS SHALL BE PACKED IN MOISTURE BARRIER BAG.

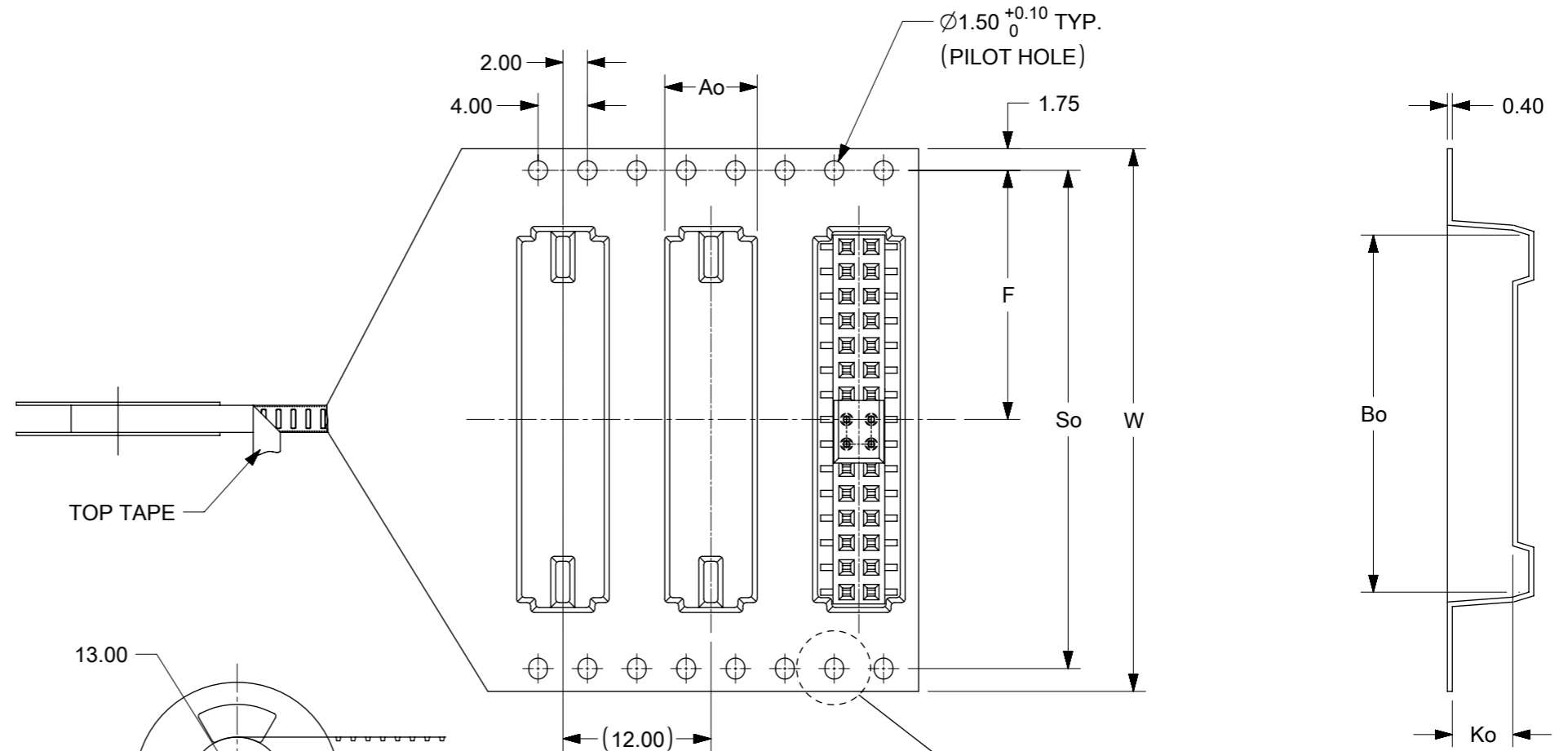
PART NUMBER WITH CAP (IN TUBE)	CKT. SIZE	DIM A	DIM B
87381-0678	6	4.00	6.00
87381-0878	8	6.00	8.00
87381-1078	10	8.00	10.00
87381-1278	12	10.00	12.00
87381-1478	14	12.00	14.00
87381-1678	16	14.00	16.00
87381-1878	18	16.00	18.00
87381-2078	20	18.00	20.00
87381-2278	22	20.00	22.00
87381-2478	24	22.00	24.00
87381-2678	26	24.00	26.00
87381-2878	28	26.00	28.00
87381-3078	30	28.00	30.00
87381-3278	32	30.00	32.00
87381-3478	34	32.00	34.00
87381-3678	36	34.00	36.00
87381-3878	38	36.00	38.00
87381-4078	40	38.00	40.00
87381-4278	42	40.00	42.00
87381-4478	44	42.00	44.00
87381-4678	46	44.00	46.00
87381-4878	48	46.00	48.00
87381-5078	50	48.00	50.00

THIS DRAWING CONTAINS INFORMATION THAT IS PROPRIETARY TO MOLEX ELECTRONIC TECHNOLOGIES, LLC AND SHOULD NOT BE USED WITHOUT WRITTEN PERMISSION		CURRENT REV DESC: MIGRATED TO NX		<b>molex</b>	
DIMENSION UNITS: mm		SCALE: NTS			
GENERAL TOLERANCES (UNLESS SPECIFIED)		EC NO: 175765		MGRID	
4 PLACES ±		DRWN: GGUNAGI		2MM RECEPTACLE 4.50MM HT.	
3 PLACES ±		CHK'D: GGUNAGI		PRODUCT CUSTOMER DRAWING	
2 PLACES ± 0.2		APPR: GGA		DOCUMENT NUMBER	
1 PLACE ±		INITIAL REVISION:		DOC TYPE	
0 PLACES ±		DRWN: KSEE		DOC PART	
ANGULAR TOL ± 3.0°		APPR: KHLIM		REVISION	
DRAFT WHERE APPLICABLE MUST REMAIN WITHIN DIMENSIONS		THIRD ANGLE PROJECTION		SD-87381-XX68	
DRAWING		SERIES		PSD 001 E1	
A3-SIZE		87381		SHEET NUMBER	
SEE TABLE		GENERAL MARKET		1 OF 2	

CKT SIZE	PART NO IN TUBE	PART NO WITH CAP IN TAPE & REEL	W	So	Ao	F	Bo	Ko
50	87381-5078	87381-6851	72	68.40	7.20	34.20	50.50	5.30

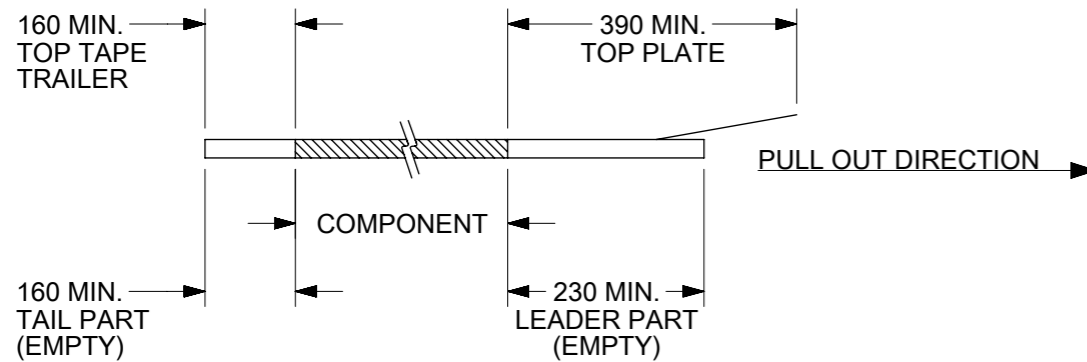


CONNECTOR ORIENTATION IN TUBE

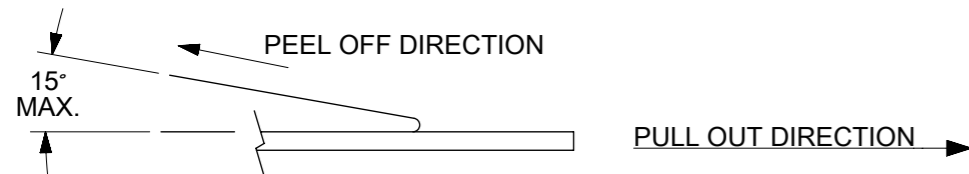


TAPE & REEL NOTES:

1. LEADER AND TRAILER TAPE



2. PEELING OFF FORCE OF THE TOP TAPE: 20-80gf. (PEELING DIRECTION AS SHOWN IN FOLLOWING FIGURE)



3. PACKAGING STANDARD IS AS PER EIA-481.  
4. TAPE & REEL QUANTITY = 800PCS/REEL.

THIS DRAWING CONTAINS INFORMATION THAT IS PROPRIETARY TO MOLEX ELECTRONIC TECHNOLOGIES, LLC AND SHOULD NOT BE USED WITHOUT WRITTEN PERMISSION									
DIMENSION UNITS		SCALE		CURRENT REV DESC: MIGRATED TO NX					
mm		NTS							
GENERAL TOLERANCES (UNLESS SPECIFIED)									
		MM	INCH	MGRID 2MM RECEPTACLE 4.50MM HT.					
4 PLACES	±			PRODUCT CUSTOMER DRAWING					
3 PLACES	±			DOCUMENT NUMBER					
2 PLACES	±	0.2		SD-87381-XX68					
1 PLACE	±			DOC TYPE					
0 PLACES	±			PSD					
ANGULAR TOL		± 3.0°		DOC PART					
				001					
DRAFT WHERE APPLICABLE MUST REMAIN WITHIN DIMENSIONS		THIRD ANGLE PROJECTION		DRAWING		SERIES		SHEET NUMBER	
				A3-SIZE		87381		2 OF 2	

DOCUMENT STATUS	P1	RELEASE DATE	2018/06/08	07:28:32
-----------------	----	--------------	------------	----------