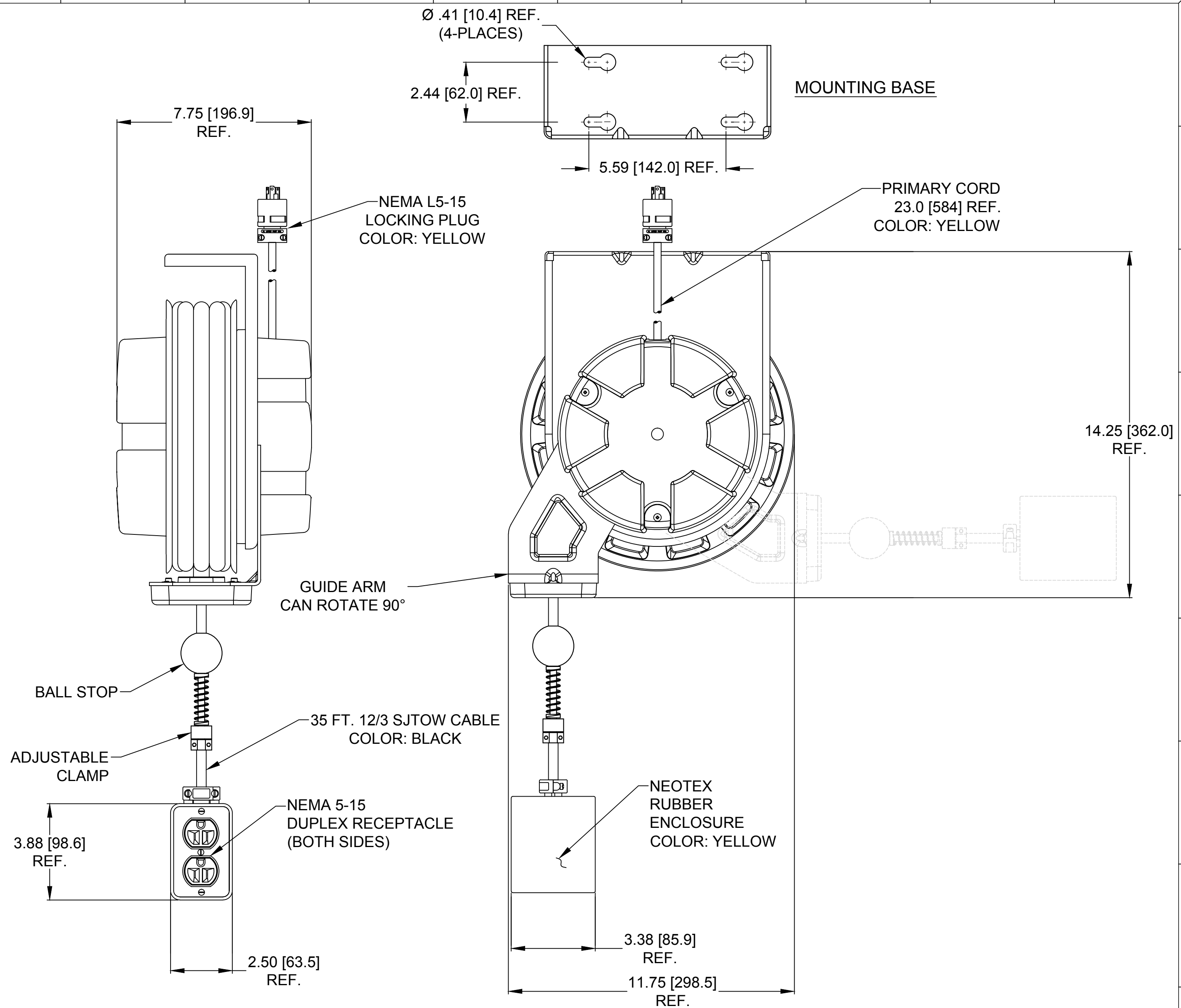




ORDER NO.	1300910214
WOODHEAD ENG. NO.	997L-3000
WIRE GAUGE	12
CONDUCTORS	3
AMPERAGE	15A
CORD LENGTH	35 FT [10.6 M]
CORD TYPE	SJTOW
CONSTRUCTION	SHEET METAL
PAINT	YELLOW POWDER COAT
REEL ENCLOSURE RATING	INDOOR
RETRACTION WEIGHT	3.0 LB [1.4 KG]



NOTES:

1. CABLE GUIDE IS ADJUSTABLE - DUAL POSITION
2. RATCHET LOCK IS EASY TO DISENGAGE FOR CONSTANT TENSION.
3. REEL CANNOT BE "LOCKED OUT" AT FULL TENSION.
4. BALL STOP INCLUDED
5. CSA CERTIFIED  FILE NO. LR29921

RELEASE SALES DRAWING EC NO.: IPG2016-0112 DRWN: KCOX01 2015/07/30 CHKD: HRUIZ01 2015/07/30 APPR: JFMURPHY 2015/09/17	QUALITY SYMBOL	GENERAL TOLERANCES (UNLESS SPECIFIED)	DIMENSION STYLE INCH/MM	SCALE NTS	DESIGN UNITS INCH	THIRD ANGLE PROJECTION	
	$\nabla=0$	mm INCH	DRAWN BY DATE	TITLE	CORD REEL W/ 3000-1 BOX 35' #12-3 SJTOW LOCKING NEMA L5-15 PLUG		
	$\nabla C=0$	4 PLACES $\pm---$ $\pm---$	KCOX01 2015/07/30	3 PLACES $\pm---$ $\pm.005$			CHECKED BY DATE
		2 PLACES $\pm.13$ $\pm.010$	HRUIZ01 2015/07/30	1 PLACE $\pm.25$ $\pm.020$	APPROVED BY DATE	 MOLEX INCORPORATED	
		ANGULAR $\pm 1/2^\circ$	JFMURPHY 2015/09/17	MATERIAL NO.	DOCUMENT NO.	SHEET NO.	
	DRAFT WHERE APPLICABLE MUST REMAIN WITHIN DIMENSIONS	1300910214	1300910214	SD-130091-024	1 OF 1		
			SIZE C	THIS DRAWING CONTAINS INFORMATION THAT IS PROPRIETARY TO MOLEX INCORPORATED AND SHOULD NOT BE USED WITHOUT WRITTEN PERMISSION			