

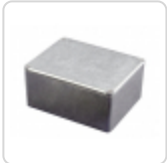


Quality Products. Service Excellence.

## Die-Cast Zinc Enclosures 1590K4 Series

Heavy, High Impact Material

### Key Features:



- High impact strength, zinc diecast alloy (tough - yet easy to machine), electronic instrument enclosure.
- Zinc material also offers easy ability to plate the enclosure.
- Zinc material is soft & easy to machine & offers a heavier weight alternative (over double) to our 1590 diecast aluminum enclosures.
- Zinc diecast enclosures provide extra coolness to the touch and add perceived premium quality weight to your product.
- Lap joint construction provides protection against access of dust and splashing water. Also provides for improved EMI/RFI shielding.
- Enclosure is vibra finished for a smooth surface with no sharp edges.
- Designed to meet IP54.
- Low side wall draft angle (2 degrees or less) for easy P.C. board mounting.
- Four (or six in the **1590K432**) M3.5 x 0.6 x 12 mm long stainless steel, Philips head, machine screws secure lid - into factory tapped holes.

### Enclosures

Part Number	Color	Length	Width	Enclosure Depth
1590K430	Natural	4.39	2.43	1.23
1590K431	Natural	4.72	3.70	2.21
1590K432	Natural	7.40	4.72	2.21



Data subject to change without notice

© 2021. Hammond Manufacturing Ltd. All rights reserved.