

Printed-circuit board connector - DMC 1,5/14-G1F-3,5-LR P20THR - 1787137

Please be informed that the data shown in this PDF Document is generated from our Online Catalog. Please find the complete data in the user's documentation. Our General Terms of Use for Downloads are valid (<http://download.phoenixcontact.com>)

Header, Nominal current: 8 A, Rated voltage (III/2): 160 V, Number of positions: 14, Pitch: 3.5 mm, Color: Black, Contact surface: Tin, Assembly: SMD/THT/THR




Product Features

- Taped headers available on request
- Headers with flange can be combined with plugs with screw flange or with Lock & Release levers
- At 8 mm, the distance from the edge of the PCB to the first row of holes is compatible with MC headers
- Extremely small THR double-level headers for SMT and wave soldering processes



Key commercial data

Packing unit	1 PCE
GTIN	 4 046356 596749
Custom tariff number	85366990
Country of origin	GERMANY

Technical data

Dimensions / positions

Length	11.6 mm
Height	12.8 mm
Pitch	3.5 mm
Dimension a	45.5 mm
Number of positions	14
Pin dimensions	0,8 x 0,8 mm
Pin spacing	2.50 mm
Hole diameter	1.4 mm

Printed-circuit board connector - DMC 1,5/14-G1F-3,5-LR P20THR - 1787137

Technical data

Technical data

Range of articles	DMC 1,5/...G1F-THR
Insulating material group	IIIa
Rated surge voltage (III/3)	2.5 kV
Rated surge voltage (III/2)	2.5 kV
Rated surge voltage (II/2)	2.5 kV
Rated voltage (III/2)	160 V
Rated voltage (II/2)	250 V
Connection in acc. with standard	EN-VDE
Nominal current I_N	8 A
Nominal voltage U_N	160 V
Maximum load current	8 A
Insulating material	LCP
Inflammability class according to UL 94	V0
Color	Black
Nominal voltage, UL/CUL Use Group B	150 V
Nominal current, UL/CUL Use Group B	8 A

Classifications

ETIM

ETIM 4.0	EC002637
ETIM 5.0	EC002637

UNSPSC

UNSPSC 11	39121409
UNSPSC 12.01	39121409
UNSPSC 13.2	39121409
UNSPSC 6.01	30211810
UNSPSC 7.0901	39121409

eCl@ss

eCl@ss 4.0	272607xx
eCl@ss 4.1	27260701
eCl@ss 5.0	27260701
eCl@ss 5.1	27260701
eCl@ss 6.0	27260704

Printed-circuit board connector - DMC 1,5/14-G1F-3,5-LR P20THR - 1787137

Classifications

eCl@ss

eCl@ss 7.0	27440402
------------	----------

Approvals

Approvals


Approvals


UL Recognized / cUL Recognized / cULus Recognized

Ex Approvals

Approvals submitted

Approval details

UL Recognized 		
	B	C
Nominal current I _N	8 A	8 A
Nominal voltage U _N	150 V	50 V

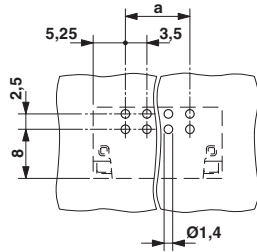
cUL Recognized 		
	B	C
Nominal current I _N	8 A	8 A
Nominal voltage U _N	150 V	50 V

cULus Recognized 		
------------------------------------------------------------------------------------------------------	--	--

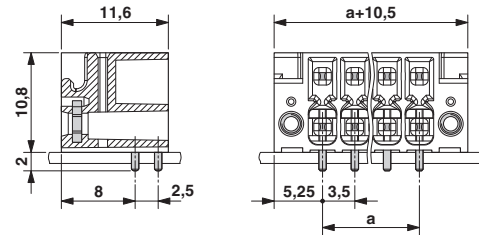
Drawings

Printed-circuit board connector - DMC 1,5/14-G1F-3,5-LR P20THR - 1787137

Drilling diagram



Dimensioned drawing



Schematic diagram

