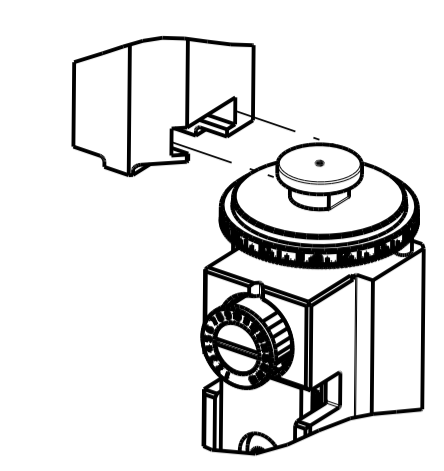


PART NUMBER	REVISION	DESCRIPTION	FEED TYPE
2266192-1	E	FINE CRIMP HEIGHT ADJUST	MECHANICAL
2266192-2	F	FINE CRIMP HEIGHT ADJUST	PNEUMATIC
7-2266192-1	E	MECHANICAL AND CRIMP TOOLING KIT	MECHANICAL
7-2266192-2	F	PNEUMATIC AND CRIMP TOOLING KIT	PNEUMATIC
7-2266192-7	A	CRIMP TOOLING KIT	-

ATLANTIC VERSION TERMINATOR INTERFACE ADAPTER



APPLICATOR DATA		
CRIMP	SIZE	TYPE
WIRE	2.29 mm (.090)	F
INSUL	-	-

APPLICATOR INSTRUCTIONS
408-35042

TERMINAL DATA: TE TERMINAL		TE CRIMP SPECIFICATION	
TERMINAL NAME: TAB, FASTON, .110 SERIES			
WIRE STRIP LENGTH		INSULATION DIAMETER RANGE	
3.58-4.34 mm (.141-.171 IN)		∅	
TERMINAL APPLICATION SPECIFICATION	114-2036		
TERMINALS APPLIED			
TE TERMINAL	TE TERMINAL	TE TERMINAL	TE TERMINAL
63932-1	62384-1	62122-1	

WIRE SIZE	CRIMP HEIGHT mm [INCH]	CRIMP HEIGHT REFERENCE SETTING
18 AWG	1.55 +/- 0.05 [1.061 +/- .002]	5.6
20 AWG	1.45 +/- 0.05 [1.057 +/- .002]	6.5
22 AWG	1.40 +/- 0.05 [1.055 +/- .002]	7.1

- 1 RECOMMENDED SPARE PARTS
- 2 REFER TO SUPPLIED INSTRUCTION SHEET FOR CLEANING, LUBRICATION AND STORAGE OF APPLICATOR.
- 3 CRIMP HEIGHT REFERENCE SETTING WAS THE SETTING USED WHEN THE APPLICATOR WAS QUALIFIED AT THE FACTORY. ADJUSTMENT MAY BE NECESSARY WHEN RUNNING APPLICATOR IN THE FIELD.
- 4 TERMINAL LUBRICANT IS RECOMMENDED.
- 5. UNLESS SPECIFIED OTHERWISE TORQUE VALUES SHALL BE USED PER DOCUMENT, 101-35000.

***WARNING**
ON INSTALLATION, SET WIRE DISC TO CRIMP HEIGHT REFERENCE SETTING FOR LARGEST WIRE SIZE. CRIMP HEIGHT REFERENCE SETTINGS GREATER THAN THE VALUE SHOWN MAY CAUSE DAMAGE TO THE CRIMP TOOLING, REFER TO THE INSTRUCTION SHEET FOR PROPER SETUP AND ADJUSTMENTS.

ATLANTIC VERSION
Shown on sheets 1 of 4 & 2 of 4
(Pacific version shown on sheets 3 of 4 & 4 of 4)

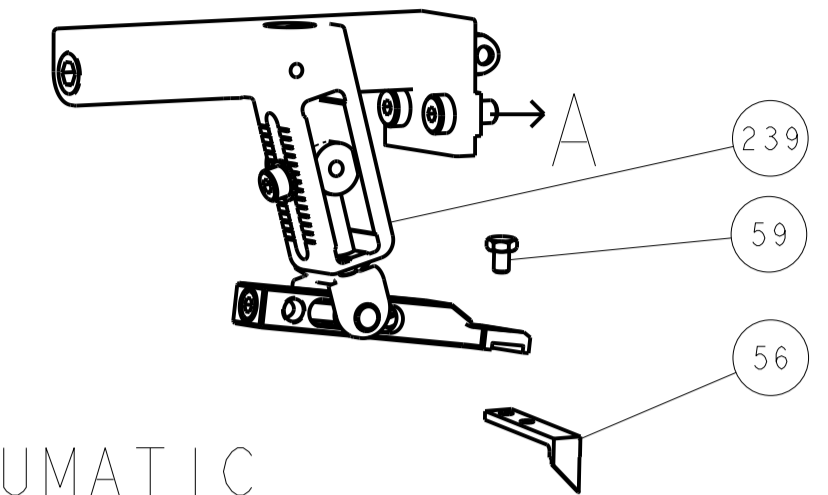
LOC	DIST	REVISIONS			
A	66	REV	DATE	BY	APPV
		C1	12FEB2018	TB	GB
		D	21FEB2018	MZ	TE
		E	22MAY2018	MEH	JDG
		F	27MAY2021	JAH	TE

-	1	-	1	-	2119641-1	FEED CAM, AIR FEED	248					
-	1	1	1	1	7-18023-7	SCR, SKT HD CAP M3 X 4.0	241					
-	-	1	-	1	2119580-1	MECHANICAL FEED ASSEMBLY	239					
-	1	-	1	-	2844940-1	AIR FEED MODULE	238					
-	REF	REF	REF	REF	994970-2	COUNTER, MAGNETIC	164					
-	1	1	1	1	2119955-1	ASSY, LUBRICATOR, SIDE FEED	113					
-	1	1	1	1	2844908-1	SCREW, LOCKING	99					
-	1	1	1	1	2844907-1	POST, LOCKING	98					
-	1	1	1	1	455888-6	SPACER, CRIMPER	82					
-	1	1	1	1	1803607-3	DOCUMENTATION PACKAGE	71					
-	1	1	1	1	2119740-1	TAG, IDENTIFICATION	67					
-	2	2	2	2	2168078-1	SCREW, DRIVE, RH, RoHS, 2 x .188	66					
-	1	1	1	1	2168083-2	SCR, SKT HD CAP, RoHS, M4 X 8.0	60					
-	1	1	1	1	5-18022-5	SCR, HEX HD CAP, M4 X 6.0	59					
-	1	1	1	1	1338685-1	PAWL, FEED	56					
-	4	4	4	4	2168083-3	SCR, SKT HD CAP, RoHS, M4 X 12.0	54					
-	2	2	2	2	1-2168083-0	SCR, SKT HD CAP, RoHS, M4 X 10	53					
-	1	1	1	1	5018030-1	NUT, HEX, REG, RoHS, M3	52					
-	1	1	1	1	811242-5	BUMPER, HOLD DOWN	51					
-	1	1	1	1	690753-2	SPACER, TONKER	50					
-	1	2	1	2	18023-9	SCR, SKT HD CAP M4 X 6.0	49					
-	-	1	-	1	2119652-1	FEED CAM, PRE FEED	48					
-	-	1	-	1	2119653-1	FEED CAM, POST FEED	47					
-	1	1	1	1	1803583-9	APPLICATOR BASIC ASSEMBLY, SF	46					
-	1	1	1	1	1803515-1	RAM ASSEMBLY, SF ATLANTIC	44					
-	1	1	1	1	1803602-1	SCR, BHSC, RoHS (M8 X 25)	41					
-	1	1	1	1	1752356-1	SUPPORT, TERMINAL	34					
-	2	2	2	2	2079383-5	SCR, BHSC, RoHS (M4 X 20)	33					
-	2	2	2	2	2-2844962-4	SPACER, CYLINDRICAL, STRIP GUIDE	30					
-	1	1	1	1	2844992-4	ASSEMBLY, STRIP GUIDE	29					
-	1	1	1	1	455888-3	SPACER, CRIMPER	28					
-	1	1	1	1	240792-1	DRAG, TERMINAL	25					
-	1	1	1	1	1320928-2	STRIP GUIDE	24					
-	1	1	1	1	2168083-2	SCR, SKT HD CAP, RoHS, M4 X 8.0	21					
-	2	2	2	2	1-18028-2	WASHER, FLAT, REG M4	20					
-	1	1	1	1	2119533-1	STRIPPER, SIDE FEED	19					
-	1	1	1	1	2119806-1	INSERT, SHEAR	13					
-	1	1	1	1	3-22280-3	SPRING, COMPRESSION	12					
-	1	1	1	1	1-356885-4	STOP, SHEAR	11					
-	1	1	1	1	2119805-1	SHEAR HOLDER, FRONT	10					
-	1	1	1	1	1803095-1	FLOATING SHEAR, FRONT	9					
-	1	2	2	1	1-1633933-6	ANVIL, COMBINATION	8					
-	-	-	-	-	-	-	7					
-	-	-	-	-	-	-	6					
-	1	1	1	1	2119757-8	DEPRESSOR, SHEAR	5					
-	-	-	-	-	-	-	4					
-	-	-	-	-	-	-	3					
-	-	-	-	-	-	-	2					
-	1	2	2	1	1	4-456406-1	CRIMPER, WIRE PREMIUM	1				
-	77	-	72	-	71	-	2	-	1	PART NO	DESCRIPTION	ITEM NO

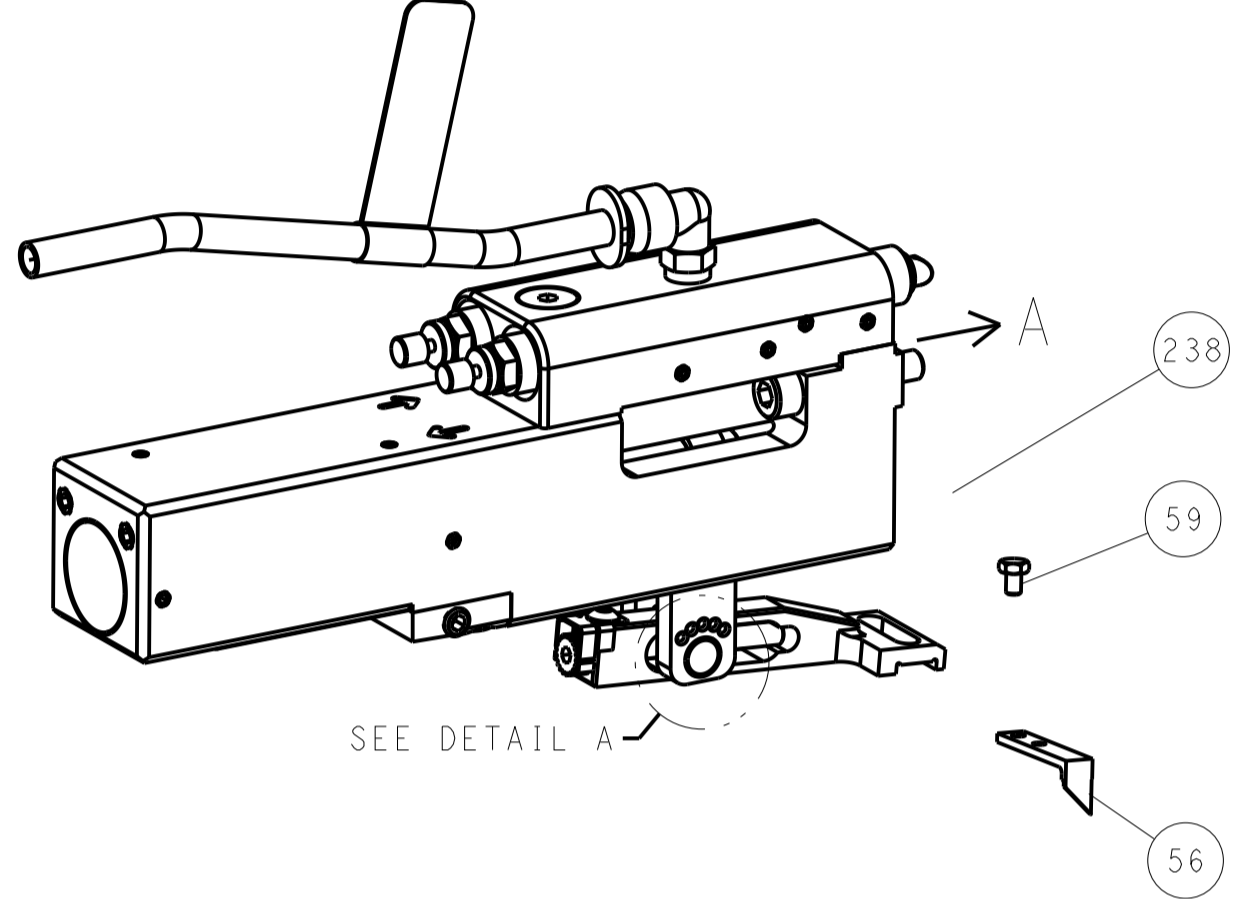
DIMENSIONS:		TOLERANCES UNLESS OTHERWISE SPECIFIED:		DWG: X. ZHAO 07JAN2014		CHK: L. ZHANG 07JAN2014		APVD: T. ELBIN 07JAN2014		NAME: Ocean Side Feed Applicator	
mm	0 PLC ±	1 PLC ±	2 PLC ±	3 PLC ±	4 PLC ±	ANGLES	FINISH	WEIGHT	SCALE	SHEET	REV
									1:2	1 OF 4	F
MATERIAL:		FINISH:		CAGE CODE:		DRAWING NO:		RESTRICTED TO:		CUSTOMER ACCESSIBLE PRODUCTION DRAWING	

LOC		DIST		REVISIONS			
A	66	P	LTN	DESCRIPTION	DATE	DWN	APVD
		-		SEE SHEET 1	-	-	-

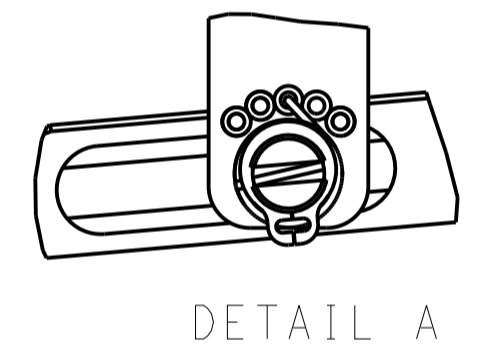
FEED TYPE MECHANICAL



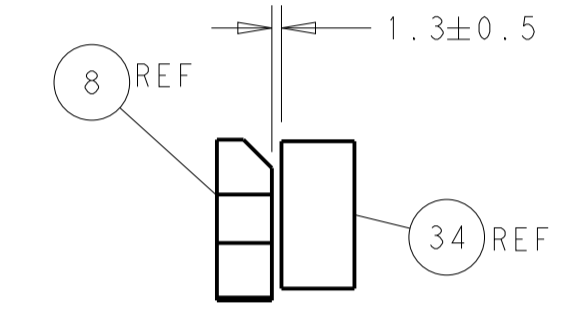
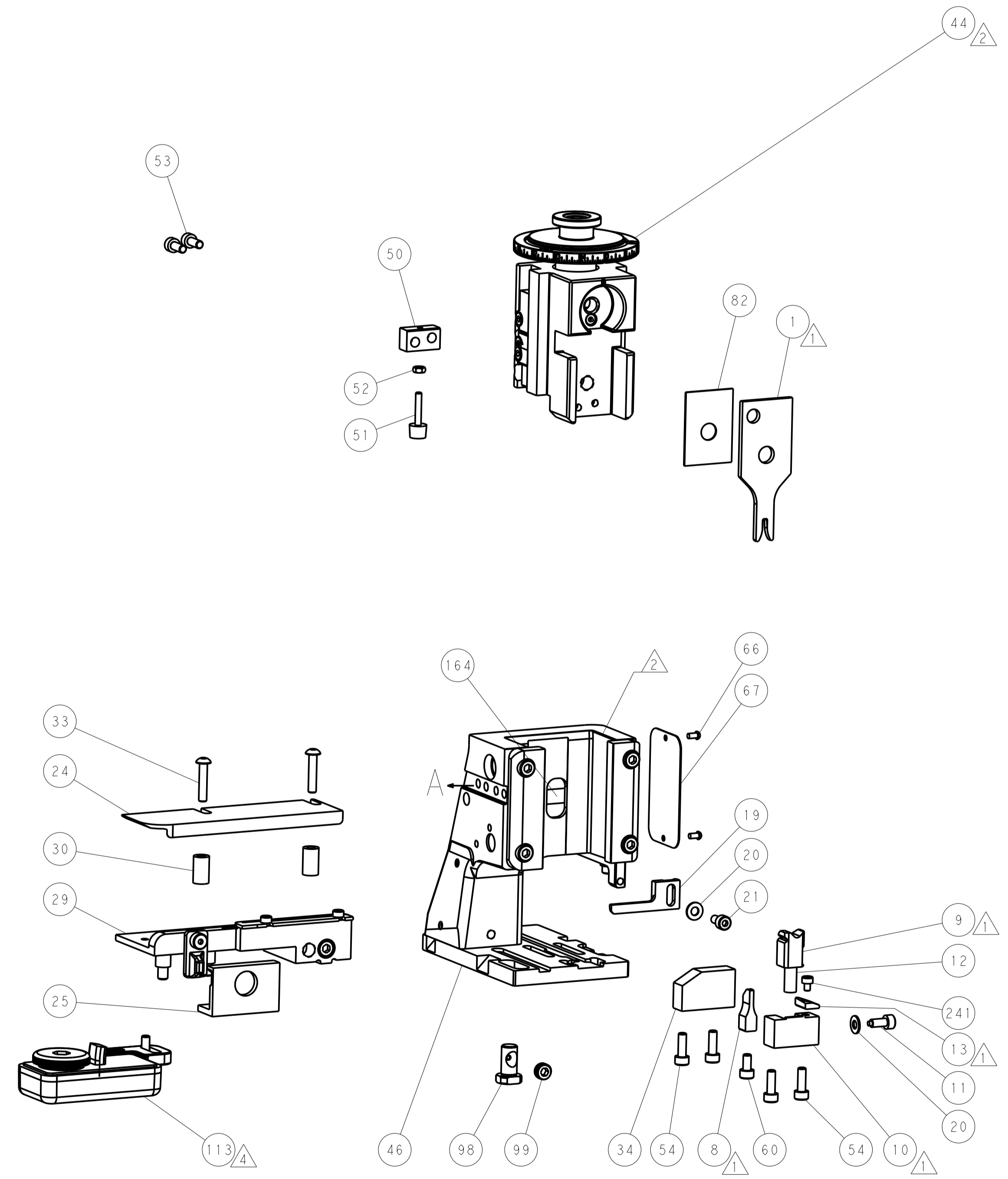
PNEUMATIC



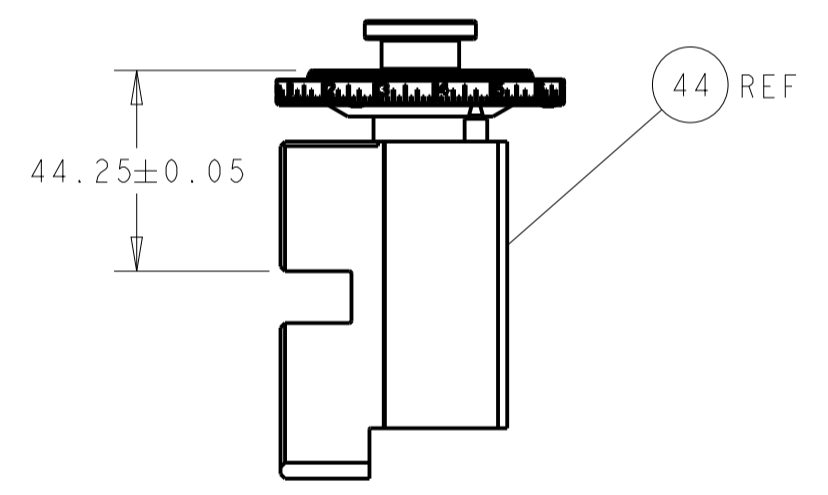
FEED SPRING SETTING POSITION (SHOWN FROM REAR SIDE)



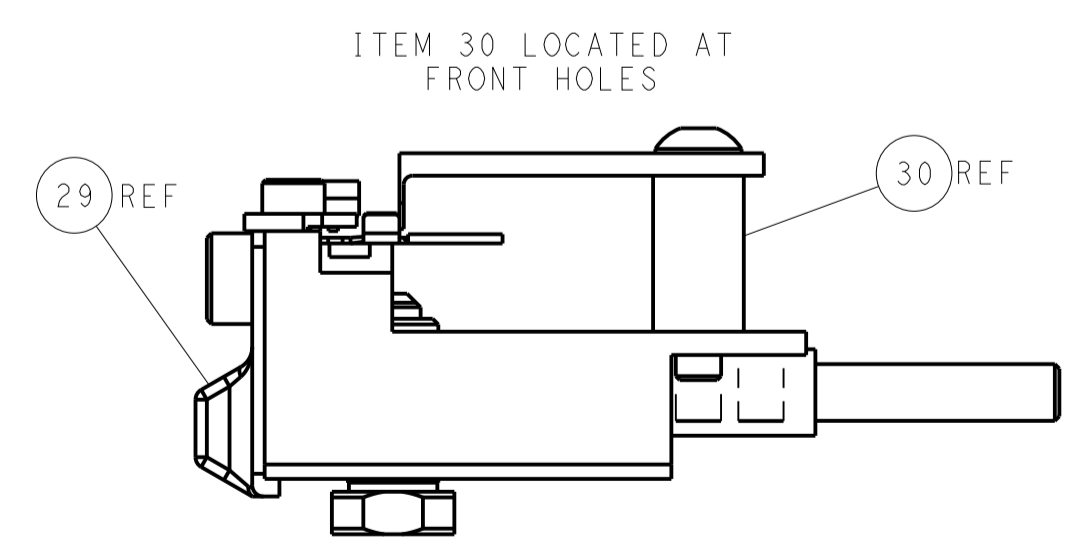
DETAIL A



TERMINAL SUPPORT LOCATION

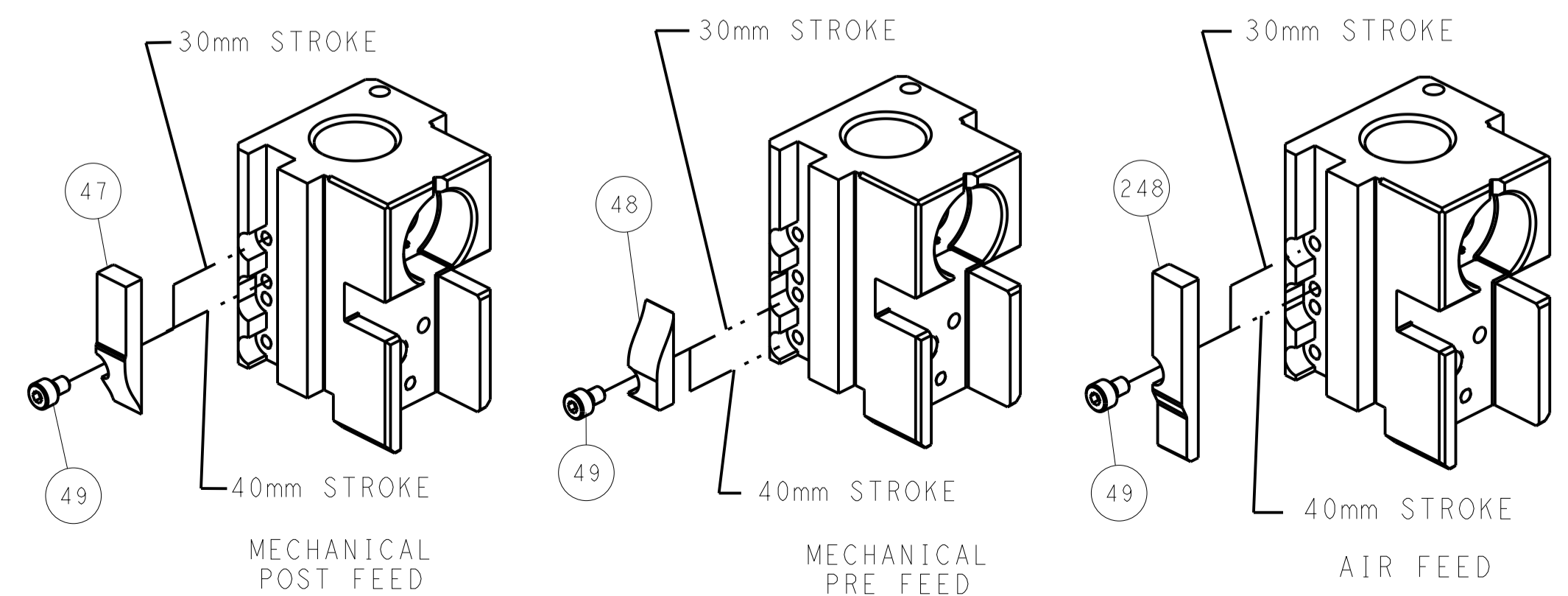


RAM SET-UP



FEED TRACK POSITION GUIDE BY WIRE BARREL

CAM POSITIONS



ATLANTIC VERSION
 Shown on sheets 1 of 4 & 2 of 4
 (Pacific version shown on sheets 3 of 4 & 4 of 4)

DIMENSIONS:		TOLERANCES UNLESS OTHERWISE SPECIFIED:		DWN: X.ZHAO 07JAN2014		TE Connectivity	
mm	0 PLC ±	1 PLC ±	2 PLC ±	3 PLC ±	4 PLC ±	Harrisburg, PA 17105-3608	
MATERIAL:		FINISH:		CHK: L.ZHANG 07JAN2014		NAME: Ocean Side Feed Applicator	
				APVD: J.FLRIN 07JAN2014		PRODUCT SPEC:	
						APPLICATION SPEC:	
						SIZE: CAGE CODE: DRAWING NO:	
						A1 00779 ©=2266192	
				WEIGHT:		RESTRICTED TO:	
				Customer Accessible Production Drawing		SCALE: 1:2 SHEET 2 OF 4 REV F	

PART NUMBER	REVISION	DESCRIPTION	FEED TYPE
2-2266192-1	E	FINE CRIMP HEIGHT ADJUST	MECHANICAL
2-2266192-2	F	FINE CRIMP HEIGHT ADJUST	PNEUMATIC
7-2266192-7	A	CRIMP TOOLING KIT	-

PACIFIC VERSION TERMINATOR
INTERFACE ADAPTER



APPLICATOR DATA		
CRIMP	SIZE	TYPE
WIRE	2.29 mm [.090]	F
INSUL	-	-

APPLICATOR INSTRUCTIONS
408-35042

TERMINAL DATA: TE TERMINAL		TE CRIMP SPECIFICATION	
TERMINAL NAME: TAB, FASTON, .110 SERIES			
WIRE STRIP LENGTH 3.58-4.34 mm [1.41-.171 IN]		INSULATION DIAMETER RANGE Ø -	
TERMINAL APPLICATION SPECIFICATION	114-2036	-	-
TERMINALS APPLIED			
TE TERMINAL	TE TERMINAL	TE TERMINAL	TE TERMINAL
63932-1	62384-1	62122-1	

WIRE SIZE	CRIMP HEIGHT mm [INCH]	CRIMP HEIGHT REFERENCE SETTING
18 AWG	1.55+/-0.05 [1.061+/-0.002]	5.6
20 AWG	1.45+/-0.05 [1.057+/-0.002]	6.5
22 AWG	1.40+/-0.05 [1.055+/-0.002]	7.1

- 1. RECOMMENDED SPARE PARTS
- 2. REFER TO SUPPLIED INSTRUCTION SHEET FOR CLEANING, LUBRICATION AND STORAGE OF APPLICATOR.
- 3. CRIMP HEIGHT REFERENCE SETTING WAS THE SETTING USED WHEN THE APPLICATOR WAS QUALIFIED AT THE FACTORY. ADJUSTMENT MAY BE NECESSARY WHEN RUNNING APPLICATOR IN THE FIELD.
- 4. TERMINAL LUBRICANT IS RECOMMENDED.
- 5. UNLESS SPECIFIED OTHERWISE TORQUE VALUES SHALL BE USED PER DOCUMENT, 101-35000.

***WARNING**
ON INSTALLATION, SET WIRE DISC TO CRIMP HEIGHT REFERENCE SETTING FOR LARGEST WIRE SIZE. CRIMP HEIGHT REFERENCE SETTINGS GREATER THAN THE VALUE SHOWN MAY CAUSE DAMAGE TO THE CRIMP TOOLING, REFER TO THE INSTRUCTION SHEET FOR PROPER SETUP AND ADJUSTMENTS.

PACIFIC VERSION
Shown on sheets 3 of 4 & 4 of 4
(Atlantic version shown on sheets 1 of 4 & 2 of 4)

LOC	DIST	REV	DATE	BY	APPV
A	66	-	-	-	-

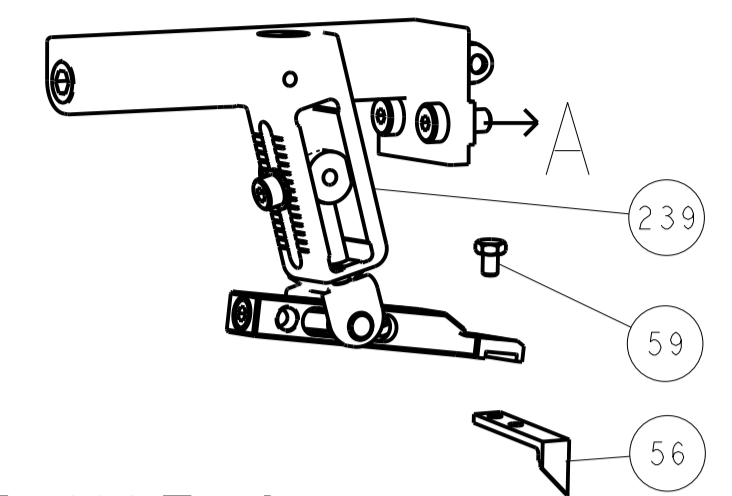
REV	DATE	BY	APPV	DESCRIPTION	DATE	BY	APPV
-	1	1		7-18023-7			
-	-	1		2119580-1			
-	1	-		2844940-1			
-	REF	REF		994970-2			
-	1	-		2119641-2			
-	1	1		2168083-8			
-	4	4		2168083-9			
-	-	1		2119653-2			
-	1	1		1-1803583-0			
-	1	1		1803516-1			
4	1	1		2119955-1			
-	1	1		2844908-1			
-	1	1		2844907-1			
-	1	1		455888-6			
-	1	1		1803607-3			
-	1	1		2119740-1			
-	2	2		2168078-1			
-	1	1		5-18022-5			
-	1	1		1338685-1			
-	2	2		1-2168083-0			
-	1	1		5018030-1			
-	1	1		811242-5			
-	1	1		690753-2			
-	1	2		18023-9			
-	-	1		2119652-1			
-	1	1		1803602-1			
-	1	1		1752356-1			
-	2	2		2079383-5			
-	2	2		2-2844962-4			
-	1	1		2844992-4			
-	1	1		455888-3			
-	1	1		240792-1			
-	1	1		1320928-2			
-	1	1		2168083-2			
-	2	2		1-18028-2			
-	1	1		2119533-1			
4	1	1		2119806-1			
-	1	1		3-22280-3			
-	1	1		1-356885-4			
4	1	1		2119805-1			
4	1	1		1803095-1			
4	1	1		2-1633933-6			
-	-	-		-			
-	-	-		-			
-	1	1		2119757-8			
-	-	-		-			
-	-	-		-			
-	-	-		-			
4	1	1		4-456406-1			

DIMENSIONS:		TOLERANCES UNLESS OTHERWISE SPECIFIED:		MATERIAL:		FINISH:	
mm	0 PLC ±	1 PLC ±	2 PLC ±	3 PLC ±	4 PLC ±	ANGLES ±	FINISH ±

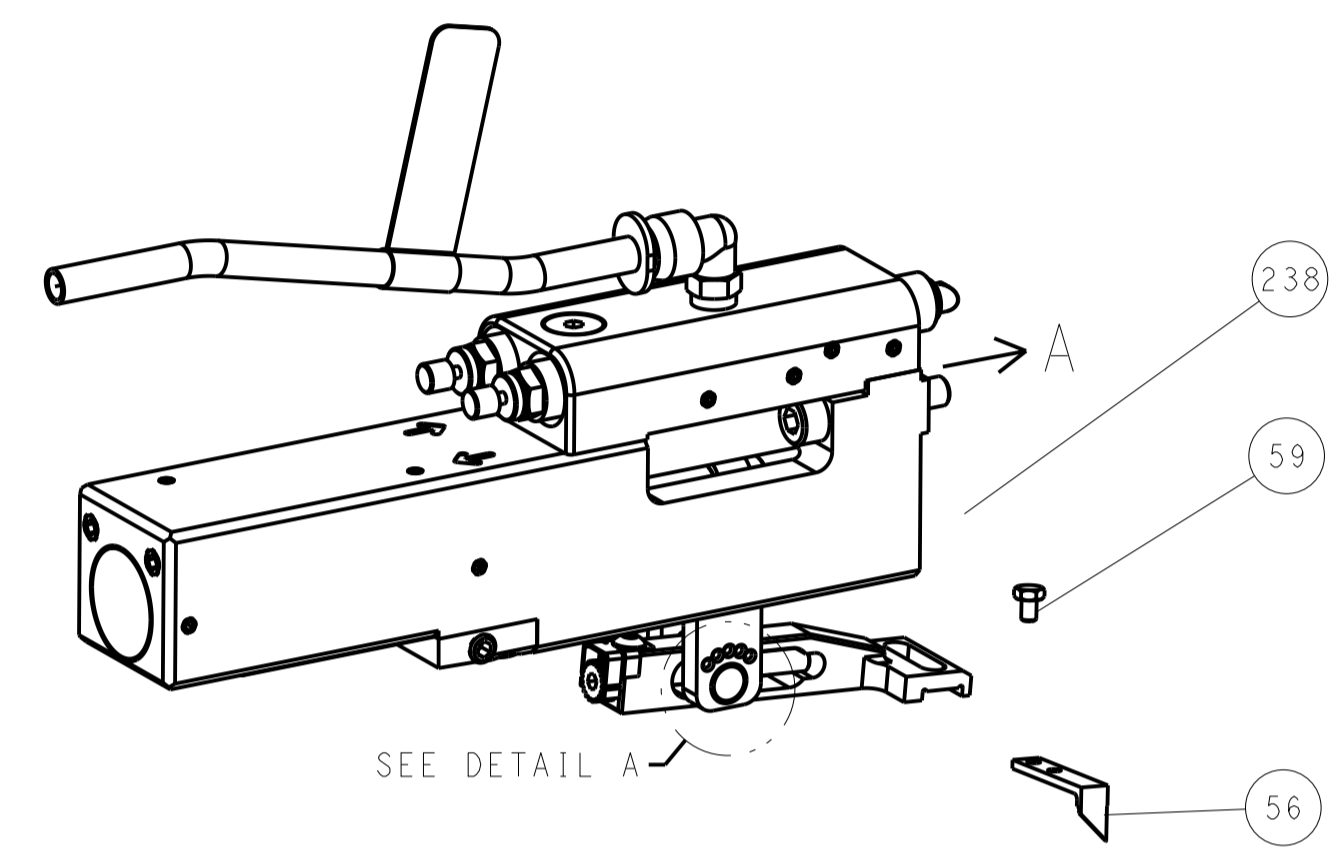
OWN	J. ZHAO	07JAN2014	CHK	L. ZHANG	07JAN2014	APVD	T. ELBIN	07JAN2014	
PRODUCT SPEC	Ocean Side Feed Applicator								
APPLICATION SPEC	-								
SIZE	CAGE CODE	DRAWING NO	RESTRICTED TO	-					
A1	00779	2266192	Customer Accessible Production Drawing	SCALE	1:2	SHEET	3 OF 4	REV	F

LOC		DIST		REVISIONS			
A	66	P	LTM	DESCRIPTION	DATE	DWN	APVD
		-	-	SEE SHEET 1	-	-	-

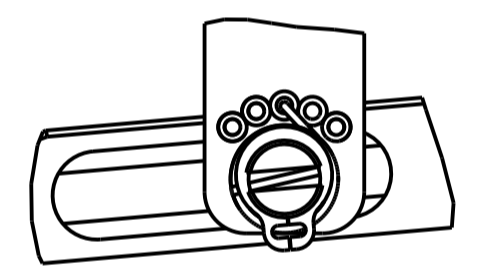
FEED TYPE MECHANICAL



PNEUMATIC

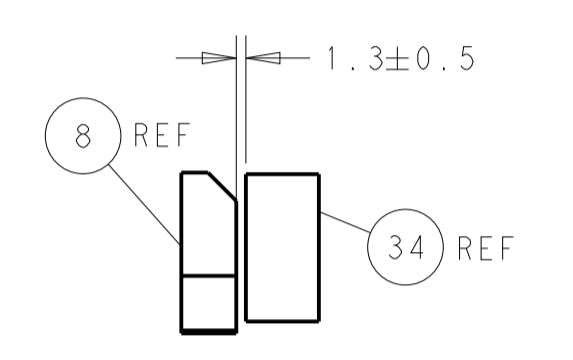
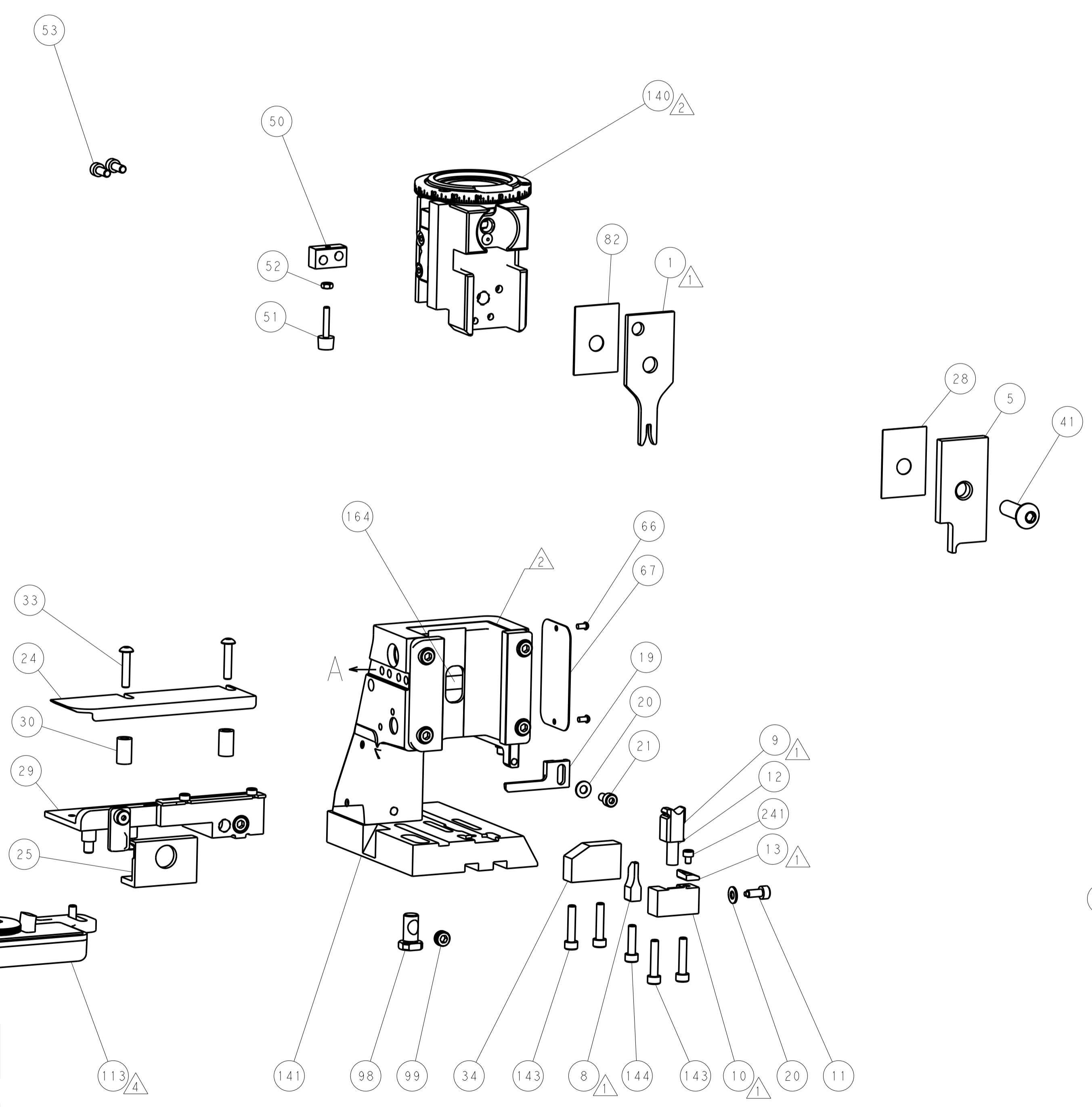
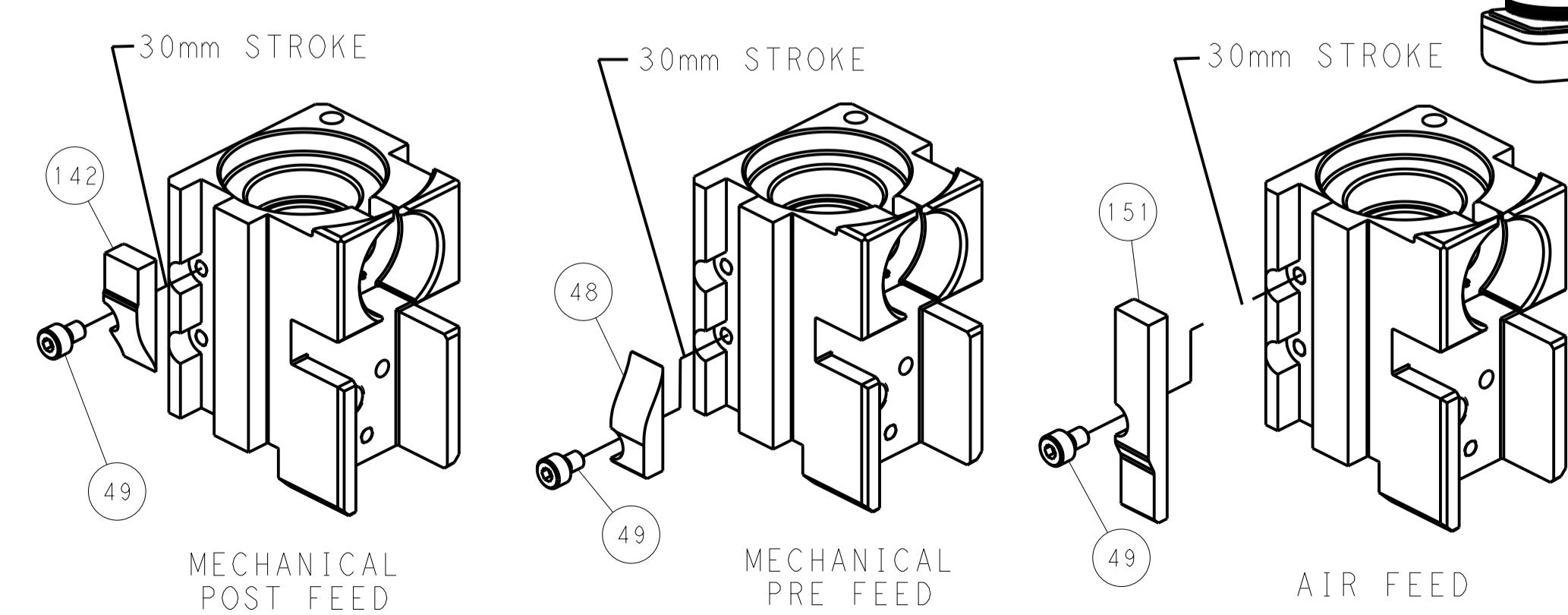


FEED SPRING SETTING POSITION (SHOWN FROM REAR SIDE)

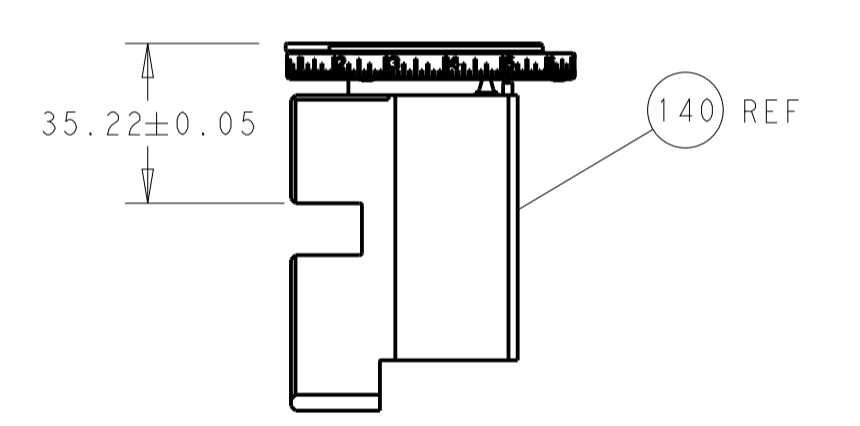


DETAIL A

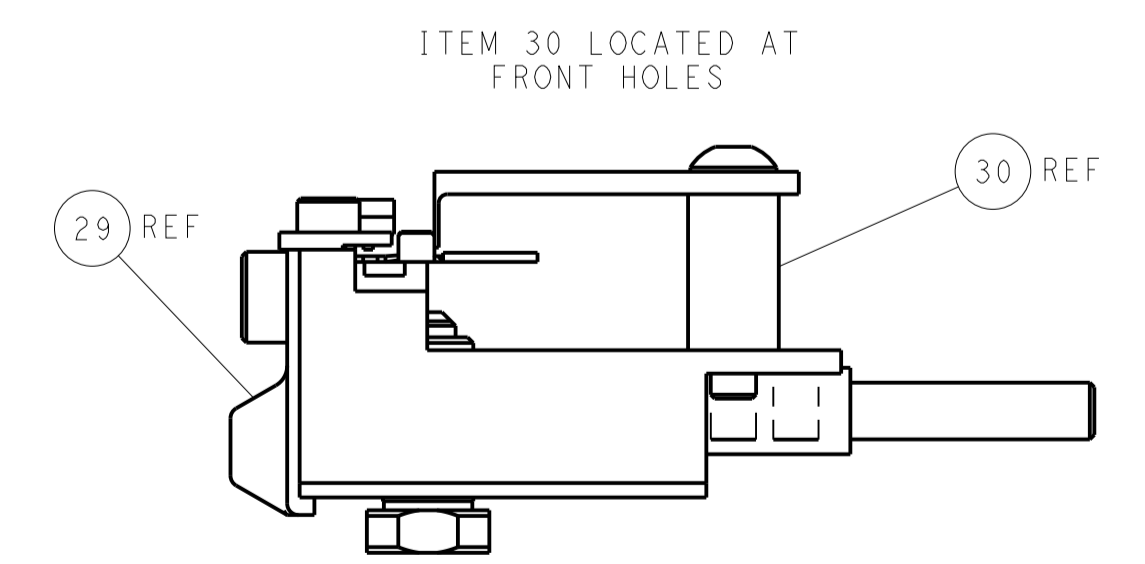
CAM POSITIONS



TERMINAL SUPPORT LOCATION



RAM SET-UP



FEED TRACK POSITION GUIDE BY WIRE BARREL

PACIFIC VERSION
 Shown on sheets 3 of 4 & 4 of 4
 (Atlantic version shown on sheets 1 of 4 & 2 of 4)

DIMENSIONS:		TOLERANCES UNLESS OTHERWISE SPECIFIED:		DWN X ZHAO 07JAN2014		TE Connectivity	
mm	0 PLC ±	1 PLC ±	2 PLC ±	3 PLC ±	4 PLC ±	5 PLC ±	Harrisburg, PA 17105-3608
MATERIAL:		FINISH:		CHK L ZHANG 07JAN2014		NAME	
				APVD T ELBIN 07JAN2014		Ocean Side Feed Applicator	
				PRODUCT SPEC		SIZE CAGE CODE DRAWING NO	
				APPLICATION SPEC		A 00779 C=2266192	
				WEIGHT		RESTRICTED TO	
				Customer Accessible Production Drawing		SCALE 1:2 SHEET 4 OF 4 REV F	