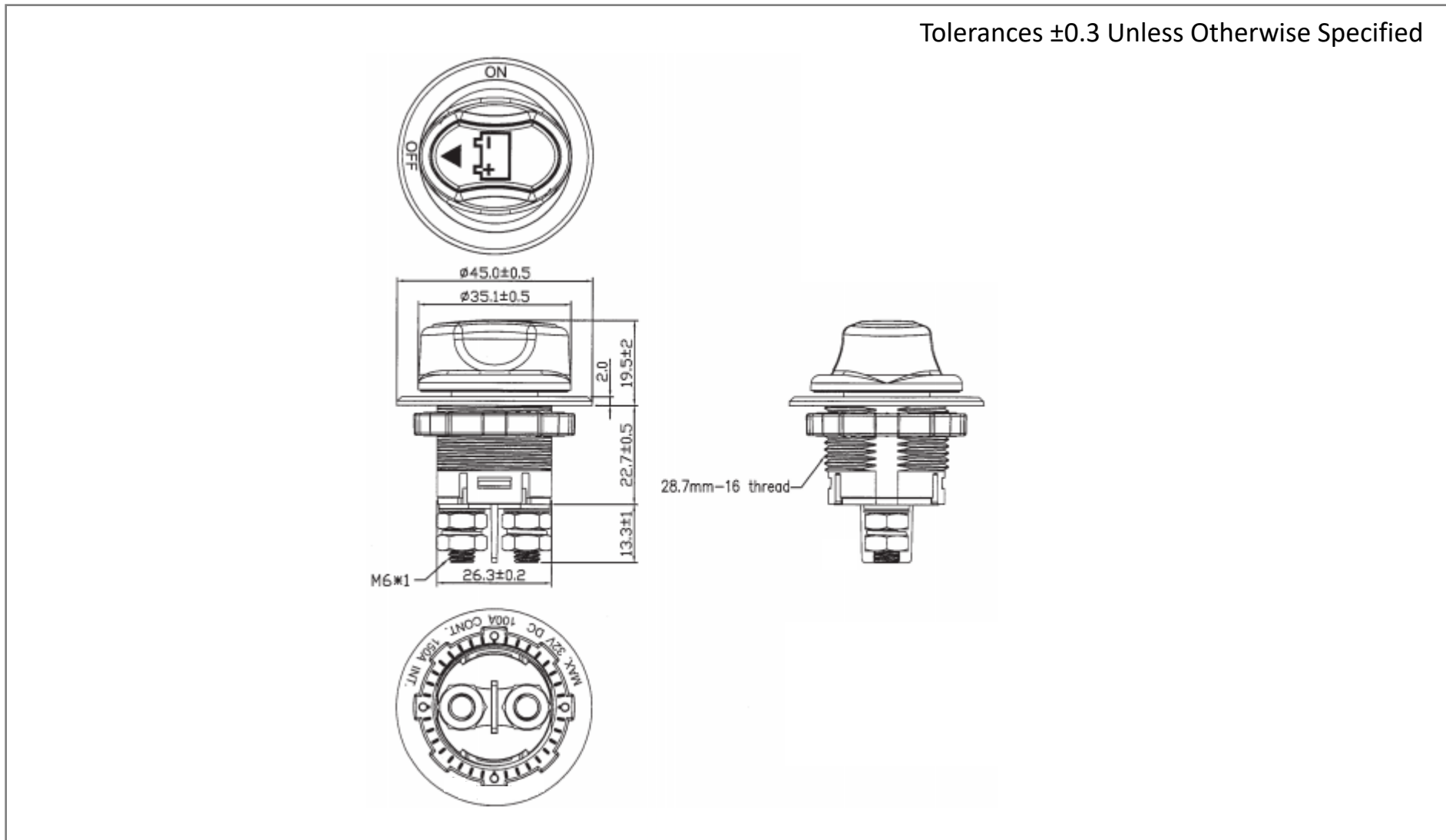
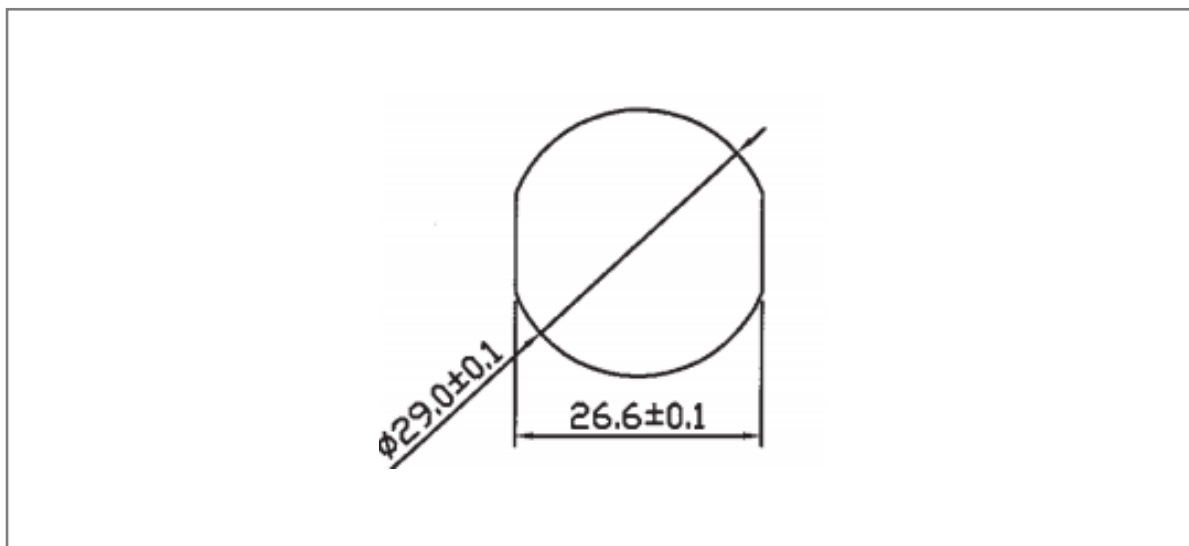


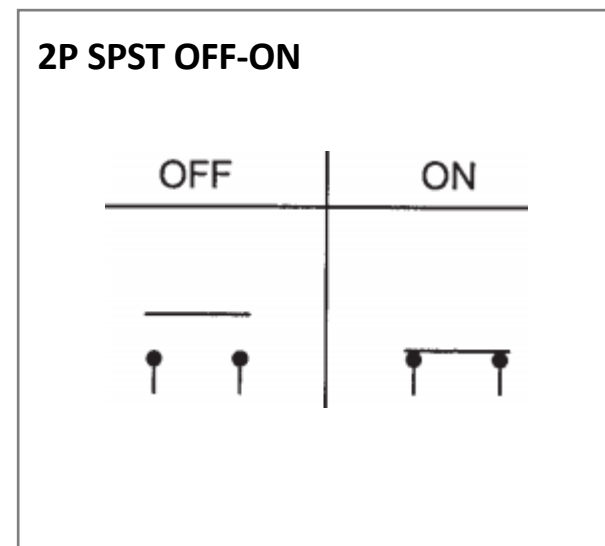
Mechanical Dimensions (mm)



Mounting Hole



Circuit Diagram



Electrical Specifications

Rating	100A 32 V DC
Intermittent Rating	150A
Cracking Rating	500 Amps
Insulation Resistance	DC 500V 100M ohm Min.
Dielectric Strength	DC 2000 / AC 1000V 1 minute

Material Specifications

Housing	Black, PA#66+33%GF with White hot stamping
Actuator	Red, PBT+15%GF
Name Plate	White, ABS w. black hot stamp.
Bottom	Black, PBT+15%GF
Nut	Black, PA#66