

# GroupGets C12880MA Breakout Board v2

The C12880MA Breakout Board by GroupGets is a simple Arduino compatible breakout board for the Hamamatsu C12880MA MEMs micro-spectrometer. The C12880MA Spectrometer is used to detect wavelengths of light and their intensities.



All power and signal pins on the C12880MA Breakout Board have been conveniently broken out so it is easy to connect via jumper or breadboard to any system of your choice. This breakout board features a super bright white LED for illuminating a target to measure fluorescence responses.

## Features

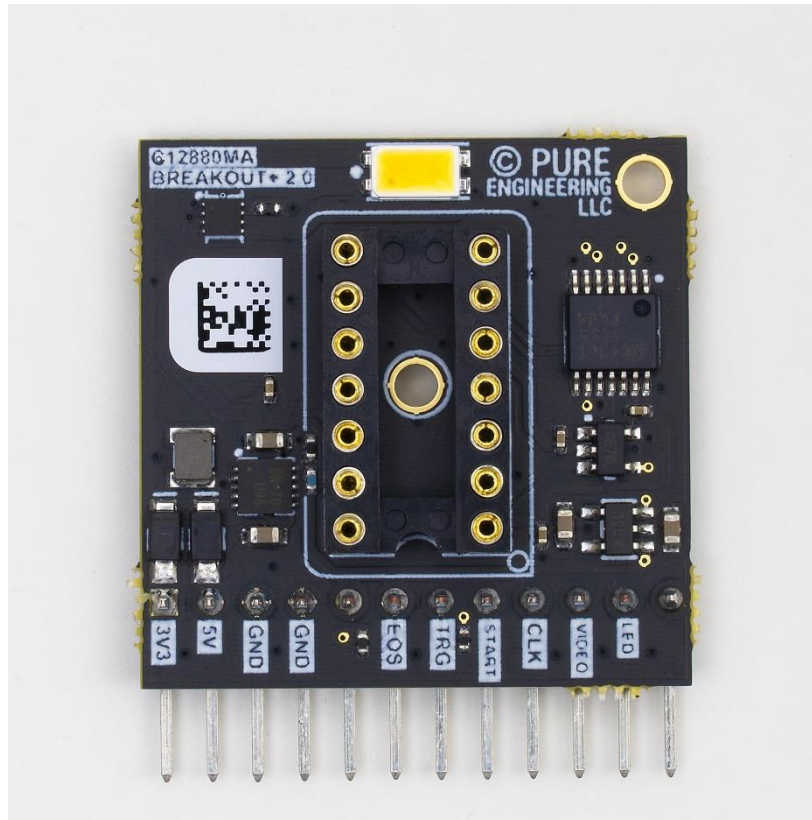
- All required connections broken out to standard 0.1" header.
- Super Bright White LED.

## APPLICATIONS

- Spectroscopy
- Color detection
- Biometry
- Food inspection

## C12880MA Breakout Board Specifications

Power Input	5V
Wavelength Detection	340 nm – 850 nm
Digital Interface	SPI
Dimensions	25 mm x 24 mm (not including pins)
Temperature Range	+5 to +50 °C
Resolution	288 Pixels
C12880MA Part Number	BO-HAMA-C12880-V2



# Hardware Schematic

Downloadable .pdf version available: [Link](#)

