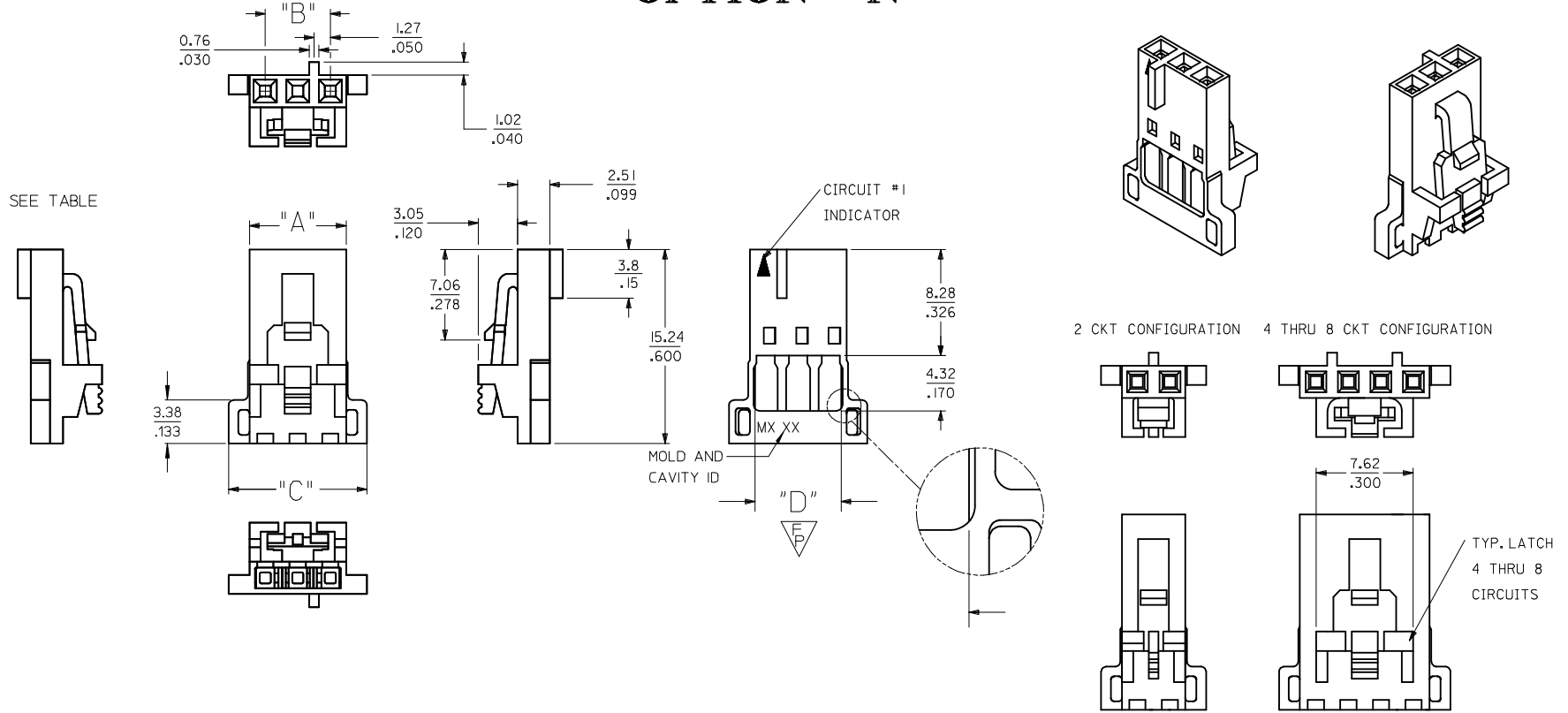


CKT SIZE	EDP. NUMBER	ENG. NUMBER	DIM. "A"	DIM. "B"	DIM. "C"	DIM. "D"
2	050-57-9702	70066-0386	(5.00) / .197	(2.54) / .100	(8.26) / .325	(4.19) / .165
3	050-57-9703	70066-0387	(7.54) / .297	(5.08) / .200	(10.80) / .425	(6.73) / .265
4	050-57-9704	70066-0388	(10.08) / .397	(7.62) / .300	(13.34) / .525	(9.27) / .365
5	050-57-9705	70066-0389	(12.62) / .497	(10.16) / .400	(15.88) / .625	(11.81) / .465
6	050-57-9706	70066-0390	(15.16) / .597	(12.70) / .500	(18.42) / .725	(14.35) / .565
7	050-57-9707	70066-0391	(17.70) / .697	(15.24) / .600	(20.96) / .825	(16.89) / .665
8	050-57-9708	70066-0392	(20.24) / .797	(17.78) / .700	(23.50) / .925	(19.43) / .765

## TERMINAL POSITION ASSURANCE (TPA) OPTION "N"



**NOTES:**

- MATERIAL GLASS FILLED POLYESTER; UL94V-0; COLOR: BLACK.
- HOUSING MAY BE USED WITH TERMINAL NUMBERS 70058 AND 71851 AND RETENTION SUPPORT 73838.
- REFER TO CHART FOR AVAILABLE CIRCUIT SIZES.
- REFER TO MOLEX PRODUCT SPECIFICATION(S): PS-70400, PS-70058, PS-71851, PS-70021, AND MOLEX APPLICATION SPECIFICATION SDES-70400.
- PACKAGE PER PK-70066-100.

LOCATE MOLD & CAVITY ID EC NO: UCP2014-4246 DRWN:RWHIPPLE 2014/04/11 CHKD: APPR:SMILLER 2014/04/18 REV:	QUALITY SYMBOLS 	GENERAL TOLERANCES (UNLESS SPECIFIED)		DIMENSION STYLE <b>MM/IN</b>	SCALE <b>4:1</b>	DESIGN UNITS <b>METRIC</b>	THIRD ANGLE PROJECTION	
	4 PLACES ± --- ± --- 3 PLACES ± --- ± .010 2 PLACES ± 0.25 ± .015 1 PLACE ± 0.38 ± --- 0 PLACE ± ±	mm      INCH	DRAWN BY REISDORF	DATE 12/23/1998	TITLE HOUSING, SL CRIMP FOR TERMINAL POSITION ASSURANCE, SALES DRAWING			
	ANGULAR ±1/2°		CHECKED BY REISDORF	DATE 12/23/1998				
	DRAFT WHERE APPLICABLE MUST REMAIN WITHIN DIMENSIONS		APPROVED BY SMILLER	DATE 2012/02/13				
MATERIAL NO. <b>SEE CHART</b>		DOCUMENT NO. <b>SD-70066-386</b>	SHEET NO. 1 OF 1					