

ITEM	PART#	DESCRIPTION	QTY	UOM
A	19092047	.093 NYLON HOUSING 319104P201	1	PC
B	2092101	093 Male Term Chain Brs Tin 14-20	4	PC
C	--	PAPER PRINTED PAPER WHITE	1	PC

FROM	TO	DESCRIPTION	COLOR
A1	--	1X14AWG DISC PVC BK UL1015 HOOKUP	BLACK
A2	--	1X14AWG DISC PVC BK UL1015 HOOKUP	BLACK
A3	--	1X14AWG DISC PVC BK UL1015 HOOKUP	BLACK
A4	--	1X14AWG DISC PVC BK UL1015 HOOKUP	BLACK

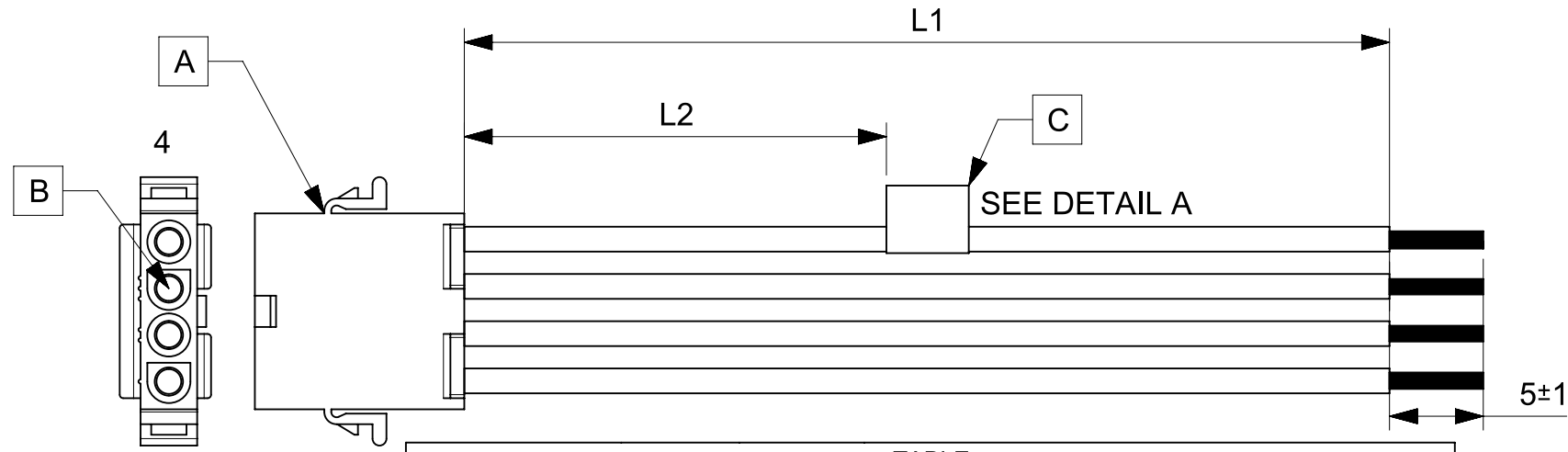


TABLE			
PART NUMBER	L1	L2	TITLE
2162931041	150±8	63 REF	STANDARD .093 4 CIRCUIT P TO S 150MM
2162931042	300±10	138 REF	STANDARD .093 4 CIRCUIT P TO S 300MM
2162931043	600±10	288 REF	STANDARD .093 4 CIRCUIT P TO S 600MM

- NOTES**
1. Connector view shown is from mating side.
  2. Free ends must be stripped, twisted & tinned. The length of tinning is 5±1mm. Tinning dia must be 2.4mm Max.
  3. Label text must be 2mm max. in height with Arial font.
  4. Label must be wrapped in Flag type on a single cable.

MOLEX P/N  
MOLEX  
BATCH WK/YR  
DETAIL A

REVISION			
DATE	REV	DESCRIPTION	CHANGER
2020/06/22	A	INITIAL RELEASE	ARAJU

FUNCTIONAL SYMBOLS $\frac{F}{A} = 0$ $\frac{F}{E} = 0$ $\frac{F}{P} = 0$ DIVISIONAL SYMBOLS	THIS DRAWING CONTAINS INFORMATION THAT IS PROPRIETARY TO MOLEX ELECTRONIC TECHNOLOGIES, LLC AND SHOULD NOT BE USED WITHOUT WRITTEN PERMISSION		DIMENSION UNITS: <b>mm</b> SCALE: <b>NTS</b>		CURRENT REV DESC:	
	GENERAL TOLERANCES (UNLESS SPECIFIED)		EC NO: 643258		DRWN: ARAJU    2020/06/22	
	ANGULAR TOL ± °		CHK'D: RDESAI01    2020/08/12		APPR: RDESAI01    2020/08/12	
	4 PLACES ±		INITIAL REVISION:		DOCUMENT NUMBER: <b>2162931041</b>	
3 PLACES ±		DRWN: ARAJU    2020/06/22		DOC TYPE: PSD    DOC PART: 000    REVISION: A		
2 PLACES ±		APPR: RDESAI01    2020/08/12		MATERIAL NUMBER: SEE TABLE		
1 PLACE ±		DRAFT WHERE APPLICABLE MUST REMAIN WITHIN DIMENSIONS		CUSTOMER: GENERAL MARKET		
0 PLACES ±		THIRD ANGLE PROJECTION		SHEET NUMBER: 1 OF 1		
		DRAFTING: A4-SIZE		SERIES: 216293		