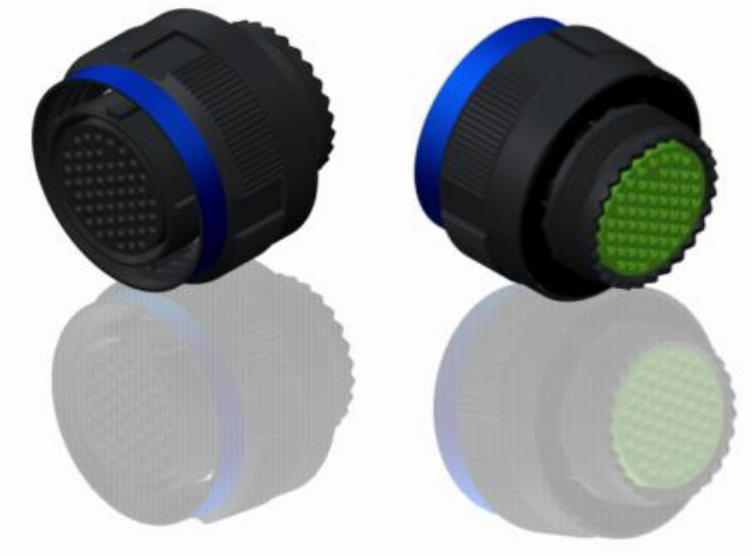


H G F E D C B A



LAYOUT SHOWN AS EXAMPLE

Keying Shown as example

**CHARACTERISTICS**

- Standard : Based on MIL-DTL-38999 Series III
- Shell Material : Aluminium
- Shell Plating : Black Zinc Nickel
- Insulator : Thermoplastic
- Contacts : Copper Alloy
- Seals & Grommet : Silicon Elastomer
- Contact Plating : Gold over copper Alloy 0.8µm minimum
- Durability : 500 Mating cycles
- Delivered without Souriau contacts
- Temperature Range : -65°C to +175°C
- Salt Spray : 500 hours
- Mass : 57.02 g ± 10%

| Connector dimension |          |
|---------------------|----------|
| Dim                 | Nominal  |
| ØS                  | 48 Max   |
| Z                   | 31 Max   |
| VV THREAD           | M37x1-6g |

SOURIAU shall not be liable for any non-conformity or damage due to a use of the Products which does not comply with the Specifications issued by either of the Parties or by a third party (professional recommendation, technical notice.)

| Country | Jurisdiction & Control List |
|---------|-----------------------------|
| FR      | Not Listed                  |

**PN: 8D525Z61SCL**

|              |   |                                |   |
|--------------|---|--------------------------------|---|
| A            | 18-10-2016  | First Release                  |   |
| ISS          | DATE  | Latest modification - by       | MOD N°  |
| Designed By: |   | Date:                          | <b>CUSTOMER DRAWING</b>   |
| <b>TITLE</b> | <b>Aluminium Plug 8D series</b>                                     |                                |   |
| SCALE        |   | General linear Tolerances: ±-- | NPRDS / PROJECT<br><b>859</b>   |
| NA           | <b>SOURIAU</b> <a href="http://WWW.SOURIAU.COM">WWW.SOURIAU.COM</a> |                                | This document is the property of SOURIAU it must not be reproduced or communicated without permission |
| FORMAT       | <b>A3</b>   |                                | SOURIAU DRG N°<br><b>8D525Z61SCL-C</b>  |
|              |   |                                | SHEET<br>1/2  |

|               |                           |   |   |    |                                    |    |   |   |   |                        |
|---------------|---------------------------|---|---|----|------------------------------------|----|---|---|---|------------------------|
| BASIC SERIES: | 8D                        | 5 | - | 25 | Z                                  | 61 | S | C | L | Delivered W/O Contacts |
| SHELL TYPE    | : Plug with RFI Shielding |   |   |    | ORIENTATION : C                    |    |   |   |   |                        |
| CONTACT TYPE  | : Standard Crimp Contact  |   |   |    | CONTACT TYPE : SOCKET(500 Matings) |    |   |   |   |                        |
| SHELL SIZE    | : 25                      |   |   |    | CONTACT LAYOUT : 25-61             |    |   |   |   |                        |
| PLATING       | : Z = Black Zinc Nickel   |   |   |    |                                    |    |   |   |   |                        |

H G F E D C B A

Contact Layout



| Contacts<br>(Insert arrangement 25-61) |              |              |                     |              |              |
|--|--------------|--------------|---------------------|--------------|--------------|
| Contact position ID                    | Location     |              | Contact position ID | Location     |              |
|  | X-axis (mm)  | Y-axis (mm)  |                     | X-axis (mm)  | Y-axis (mm)  |
| A                                      | +196 (4.98)  | +500 (12.70) | j                   | +251 (6.38)  | -314 (7.98)  |
| B                                      | +314 (7.98)  | +435 (11.05) | j                   | +133 (3.38)  | -379 (9.63)  |
| C                                      | +413 (10.49) | +343 (8.71)  | k                   | +000 (0.00)  | -402 (10.21) |
| D                                      | +485 (12.32) | +230 (5.84)  | m                   | -133 (3.38)  | -379 (9.63)  |
| E                                      | +527 (13.39) | +101 (2.57)  | n                   | -251 (6.38)  | -314 (7.98)  |
| F                                      | +536 (13.61) | -030 (0.76)  | p                   | -341 (8.66)  | -213 (5.41)  |
| G                                      | +511 (12.98) | -164 (4.17)  | q                   | -392 (9.96)  | -088 (2.24)  |
| H                                      | +454 (11.53) | -287 (7.29)  | r                   | -399 (10.13) | +046 (1.17)  |
| J                                      | +368 (9.35)  | -391 (9.93)  | s                   | -362 (9.19)  | +175 (4.45)  |
| K                                      | +259 (6.58)  | -470 (11.94) | t                   | -285 (7.24)  | +283 (7.19)  |
| L                                      | +134 (3.40)  | -519 (13.18) | u                   | -173 (4.39)  | +363 (9.22)  |
| M                                      | +000 (0.00)  | -537 (13.64) | v                   | +000 (0.00)  | +338 (8.59)  |
| N                                      | -134 (3.40)  | -519 (13.18) | w                   | +147 (3.73)  | +223 (5.66)  |
| P                                      | -259 (6.58)  | -470 (11.94) | x                   | +237 (6.02)  | +122 (3.10)  |
| R                                      | -368 (9.35)  | -391 (9.93)  | y                   | +267 (6.78)  | -010 (0.25)  |
| S                                      | -454 (11.53) | -287 (7.29)  | z                   | +228 (5.79)  | -139 (3.53)  |
| T                                      | -511 (12.98) | -164 (4.17)  | AA                  | +131 (3.33)  | -233 (5.92)  |
| U                                      | -536 (13.61) | -030 (0.76)  | BB                  | +000 (0.00)  | -267 (6.78)  |
| V                                      | -527 (13.39) | +101 (2.57)  | CC                  | -131 (3.33)  | -233 (5.92)  |
| W                                      | -485 (12.32) | +230 (5.84)  | DD                  | -228 (5.79)  | -139 (3.53)  |
| X                                      | -413 (10.49) | +343 (8.71)  | EE                  | -267 (6.78)  | -010 (0.25)  |
| Y                                      | -314 (7.98)  | +435 (11.05) | FF                  | -237 (6.02)  | +122 (3.10)  |
| Z                                      | -196 (4.98)  | +500 (12.70) | GG                  | -147 (3.73)  | +223 (5.66)  |
| a                                      | -068 (1.73)  | +454 (11.53) | HH                  | +000 (0.00)  | +200 (5.08)  |
| b                                      | +068 (1.73)  | +454 (11.53) | JJ                  | +105 (2.67)  | +094 (2.39)  |
| c                                      | +173 (4.39)  | +363 (9.22)  | KK                  | +135 (3.43)  | -041 (1.04)  |
| d                                      | +285 (7.24)  | +283 (7.19)  | LL                  | +000 (0.00)  | -132 (3.35)  |
| e                                      | +362 (9.19)  | +175 (4.45)  | MM                  | -135 (3.43)  | -041 (1.04)  |
| i                                      | +399 (10.13) | -046 (1.17)  | NN                  | -105 (2.67)  | +094 (2.39)  |
| g                                      | +392 (9.96)  | -088 (2.24)  | PP                  | +000 (0.00)  | +000 (0.00)  |
| h                                      | +341 (8.66)  | -213 (5.41)  | ---                 | ---          | ---          |

| Shell size | Arrangement no. | Number of contacts | Size contacts | Service rating | Contact location | Supersedes |
|------------|-----------------|--------------------|---------------|----------------|------------------|------------|
| 25         | -61             | 61                 | 20            | I              | All              | MS20057-61 |

SOURIAU shall not be liable for any non-conformity or damage due to a use of the Products which does not comply with the Specifications issued by either of the Parties or by a third party (professional recommendation, technical notice.)

| Country | Jurisdiction & Control List |
|---------|-----------------------------|
| FR      | Not Listed                  |

PN: 8D525Z61SCL

|                |                                     |                                |   |
|----------------|-------------------------------------|--------------------------------|---|
| A              | 18-10-2016                          | First Release                  |   |
| ISS            | DATE                                | Latest modification - by       | MOD N°  |
| Designed By:   |                                     | Date:                          | <b>CUSTOMER DRAWING</b>   |
| <b>TITLE</b>   |                                     | Aluminium Plug 8D series       |   |
| SCALE          |                                     | General linear Tolerances: ±-- | NPRDS / PROJECT<br><b>859</b>   |
| <b>SOURIAU</b> |                                     | WWW.SOURIAU.COM                |   |
|                |                                     |                                | This document is the property of SOURIAU it must not be reproduced or communicated without permission |
| FORMAT         | <b>SOURIAU DRG N° 8D525Z61SCL-C</b> |                                | SHEET<br>2/2  |