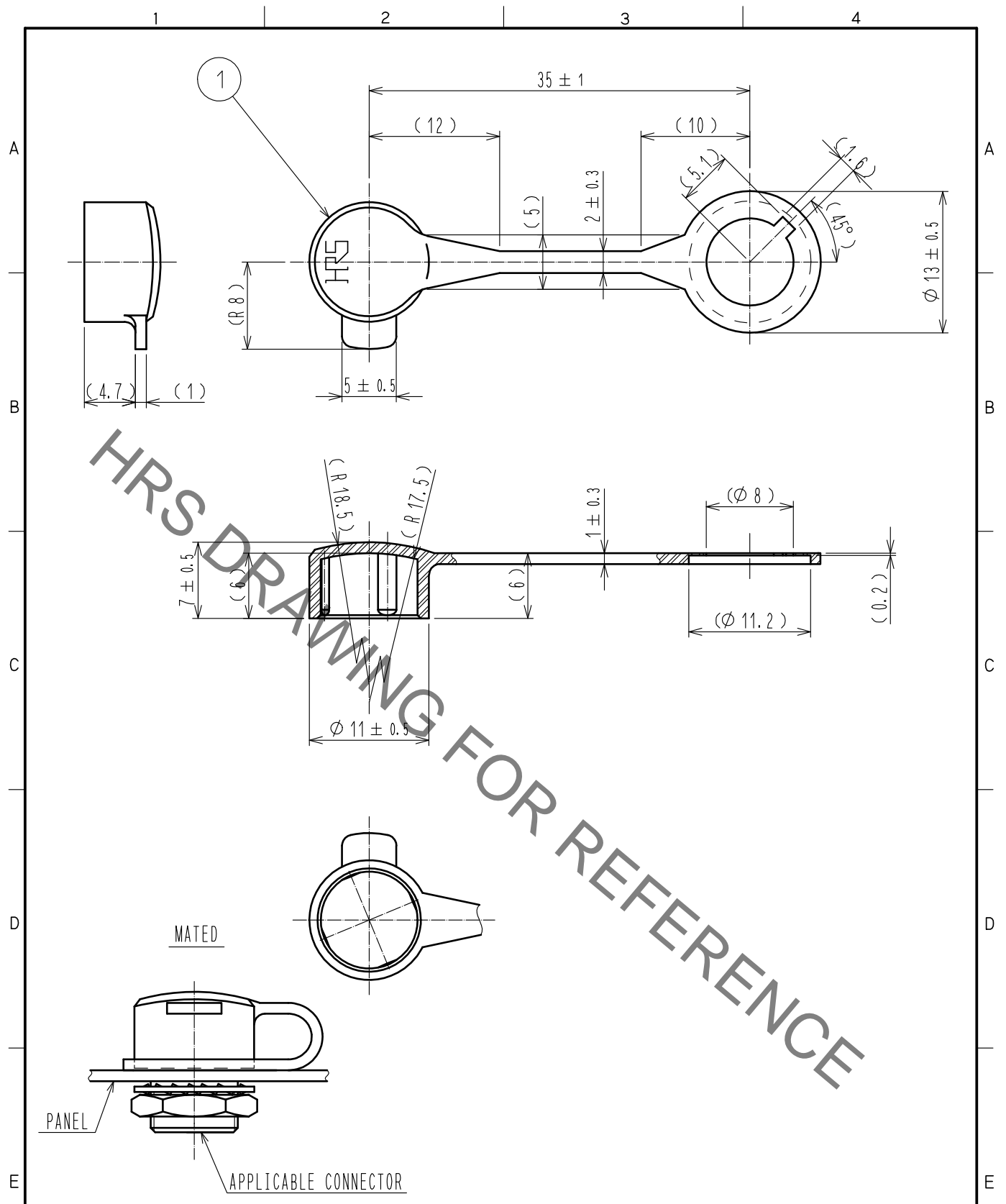


Jul.1.2019 Copyright 2019 HIROSE ELECTRIC CO., LTD. All Rights Reserved.
 In case of consideration for using Automotive equipment / device which demand high reliability, kindly contact our sales window correspondents.



NOTES 1. THIS PRODUCT IS A CAP FOR HR10※-7R-※(※), HR10※-7J-※(※).
 IT IS APPLICABLE REGARDLESS OF GIVEN ALPHABETS OR NUMBERS SHOWN AT ※.

1	POLYPROPYLENE	(BLACK) UL94V-0						
NO.	MATERIAL	FINISH .	REMARKS	NO.	MATERIAL	FINISH .	REMARKS	
UNITS mm		SCALE 2 : 1	COUNT 	DESCRIPTION OF REVISIONS		DESIGNED	CHECKED	DATE
HIROSE ELECTRIC CO., LTD.		APPROVED	:EJ. KUNII	15.08.27	DRAWING NO.	EDC-021623-01-01		
		CHECKED	:EJ. KUNII	15.08.27	PART NO.	HR10-7R-C(01)		
		DESIGNED	:TP. KOMATSU	15.08.27	CODE NO.	CL110-0058-6-01		
		DRAWN	:TP. KOMATSU	15.08.27				
							1/1	