

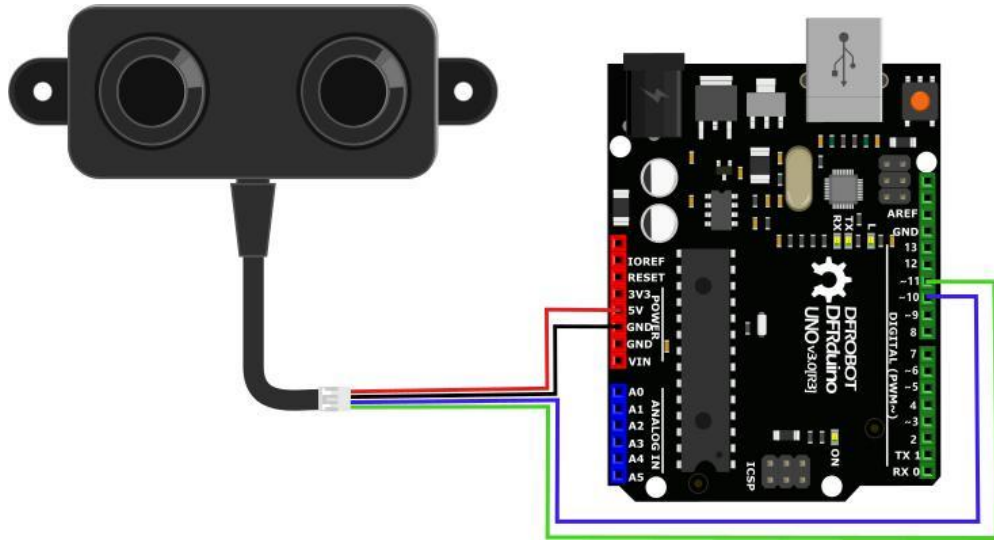


## A02YYUW Waterproof Ultrasonic Sensor

SKU:SEN0311

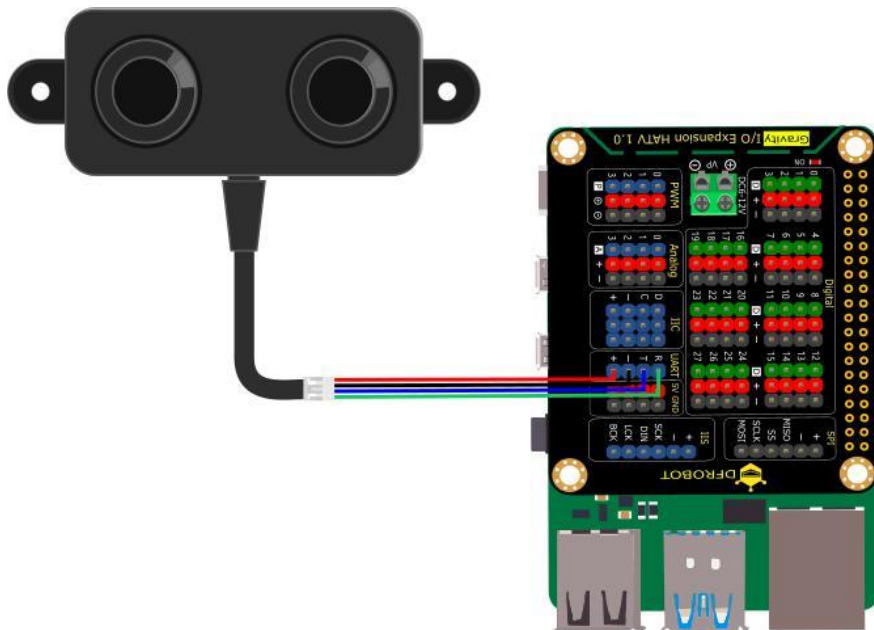
### *INTRODUCTION*

Ultrasonic distance sensor determines the distance to a target by measuring time lapses between the sending and receiving of the ultrasonic pulse. This is an easy-to-use commercial-grade ultrasonic sensor module of high performance and reliability, featuring much smaller blind zone, wider sensing angle and a certain penetration power(smog, dust) compared with other similar [sensors](#) .



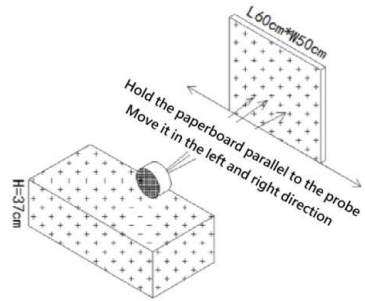
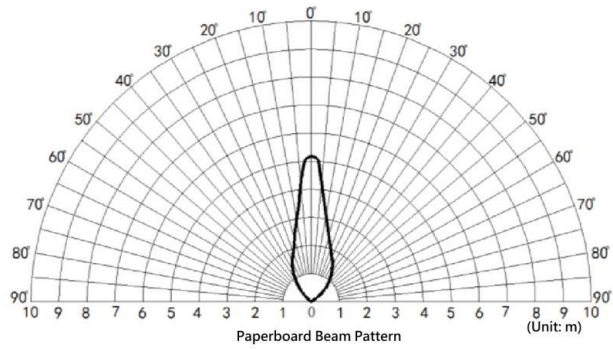
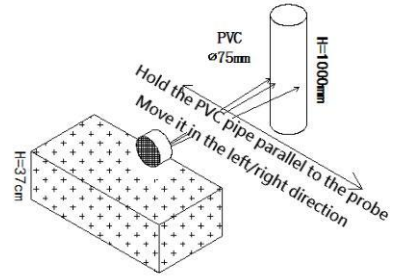
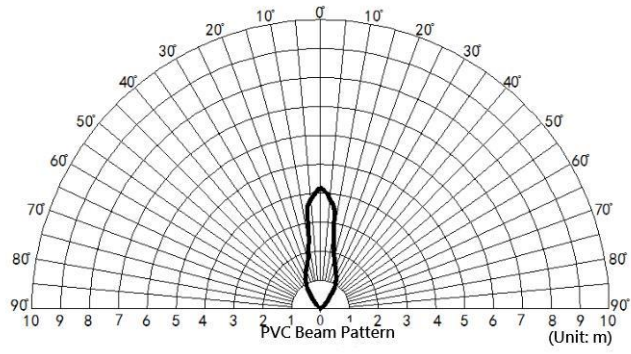
### Connection with [Arduino](#)

The ultrasonic sensor adopts closed separated probe, waterproof and dustproof, which could be well suitable for harsh and moist measuring environment. All the signal processing units are integrated inside the [module](#), so users can directly obtain the distance value through Asynchronous Serial Interface. With 9600bit/s band rate, the sensor can easily communicate with upper-host or other MCU, which greatly shortens the developing cycle for users.

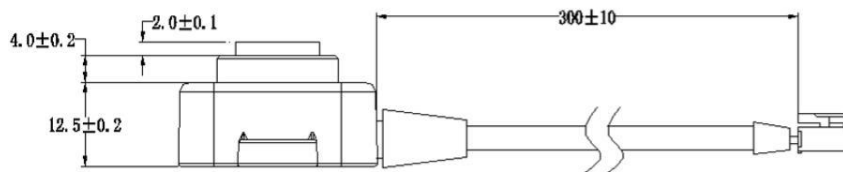
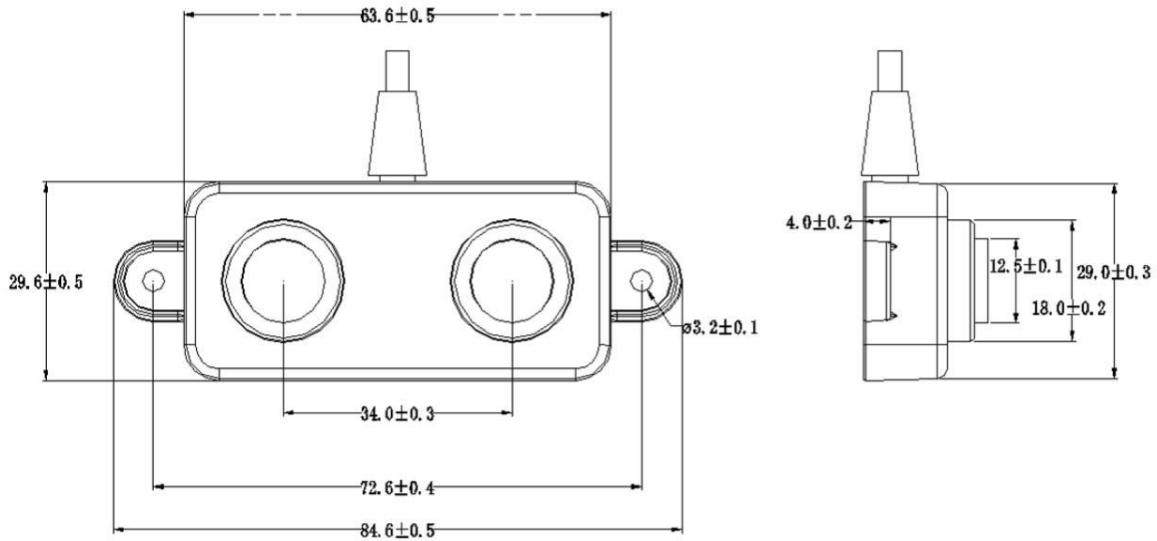


### Connection with [Raspberry Pi](#)

Use the sensor with [Arduino](#) controller to build up your projects, such as backing car annunciator, obstacle avoidance [robot](#), object approaching detection etc.



### Beam Directionalities Diagram



Unit: mm

### Dimension Diagram

## ***SPECIFICATION***

- Operating Voltage: 3.3~5V
- Average Current: <8mA
- Blind Zone Distance: 3cm
- Detecting Range(Flat object): 3-450cm
- Output: URAT
- Response Time:100ms
- Operating Temperature: -15~60°C
- Storage Temperature: -25~80°C
- Reference Angle: 60°
- Waterproof Grade: IP67

## ***SHIPPING LIST***

- A02YYUW Waterproof Ultrasonic Sensor x1
- PH2.0-4P Connector x1