

ATLANTIC VERSION TERMINATOR INTERFACE ADAPTER	PART NUMBER	REVISION	DESCRIPTION	FEED TYPE	APPLICATOR STYLE CONVERSION CHART					
					CONVERT TO	PART NUMBERS REQUIRED				
	2266159-2	E	FINE CRIMP HEIGHT ADJUST	PNEUMATIC	-	1338685-1	5-18022-5	-	-	-
	2266159-5	E	FINE CRIMP HEIGHT ADJUST	SERVO LATCH PLATE ⁴	SERVO LATCH PLATE	2119951-1	8-2266159-5	1901094-3	1-1752354-1	2168400-6 (QUANTITY 2)
	2266159-6	E	NON-CRIMP HEIGHT ADJUST	SERVO LATCH PLATE ¹²	PNEUMATIC FEED	2161326-1	8-2266159-4	-	-	-
	2266159-7	E	FINE CRIMP HEIGHT ADJUST	NONE	-	-	-	-	-	-
7-2266159-7	A	CRIMP TOOLING KIT	-	-	-	-	-	-	-	-

APPLICATOR DATA		
CRIMP	SIZE	TYPE
WIRE	3.56 mm [1.40]	F
INSUL	-	-

APPLICATOR INSTRUCTIONS
408-10389

TERMINAL DATA: TE TERMINAL		TE CRIMP SPECIFICATION	
TERMINAL NAME: RECEPTACLE, TWIST LOCK			
WIRE STRIP LENGTH		INSULATION DIAMETER RANGE	
3.96-4.72 mm [1.56-.186 IN]		Ø	-
TERMINAL APPLICATION SPECIFICATION	NONE	-	-
TERMINALS APPLIED ⁰ / ₃			
TE TERMINAL	TE TERMINAL	TE TERMINAL	TE TERMINAL
63863-1	63863-2	2232552-1	2232552-2

WIRE SIZE	CRIMP HEIGHT mm [INCH]	CRIMP HEIGHT REFERENCE SETTING
14 AWG	2.16 +/- 0.05 [1.085 +/- .002]	5.4
16 AWG	1.98 +/- 0.05 [1.078 +/- .002]	7.7
18 AWG	1.90 +/- 0.05 [1.075 +/- .002]	8.5

- RECOMMENDED SPARE PARTS
- ² GREASE BEARING SURFACES LIGHTLY
- ³ LUBRICATE DAILY PER THE APPLICATOR INSTRUCTION SHEET SUPPLIED WITH THE APPLICATOR.
- ⁴ APPLICATOR SPECIFIC DATA TO BE ENTERED INTO BLANK MEMORY CHIP AT ASSEMBLY. SEE BELOW FOR PART NUMBER:
 PNEUMATIC FEED WITH "SMART APPLICATOR" CONVERSION: 8-2266159-4
 SERVO FEED WITH "FINE CRIMP HEIGHT ADJUST": 8-2266159-5
 SERVO FEED WITH "NON-CRIMP HEIGHT ADJUST": 8-2266159-6
- ⁵ ADJUSTMENT OF THE STRIPPER MAY BE REQUIRED WHEN MOVING THE APPLICATOR BETWEEN BENCH AND LEADMAKER APPLICATIONS.
- ⁶ APPLY PART NUMBER 1-23419-5 LOCTITE TO THREADS OF ITEMS 62. FOR -6 ONLY APPLY PART NUMBER 1-23419-5 LOCTITE TO THREADS OF ITEMS 37.
- ⁷ GREASE THREADS, GROOVE AND O-RING ON ITEMS 35 & 252.
- ⁸ MAGNET, ITEM 166 MUST BE ORIENTED CORRECTLY IN ORDER TO PROPERLY ACTUATE THE COUNTER.
- ⁹ CRIMP HEIGHT REFERENCE SETTING WAS THE SETTING USED WHEN THE APPLICATOR WAS QUALIFIED AT THE FACTORY. ADJUSTMENT MAY BE NECESSARY WHEN RUNNING APPLICATOR IN THE FIELD.
- ¹⁰ TERMINAL PITCH NOT COMPATIBLE WITH MECHANICAL FEED.
- ¹¹ TO CONVERT THE APPLICATOR TO A NON-CARRIER CUTTING STYLE, REMOVE ITEM 13 AND ATTACH TO THE LOCATION ON THE BACK SIDE OF THE HOUSING. REFER TO INSTRUCTION SHEET FOR ADDITIONAL INFORMATION.
- ¹² WHEN ASSEMBLING A NON CRIMP HEIGHT ADJUST APPLICATOR (-6) USE SHIMS FROM ITEM 260 TO ACHIEVE A NOMINAL SHIM HEIGHT OF 3.64.
- ¹³ TERMINAL LUBRICANT IS RECOMMENDED.
- ¹⁴ APPLICATOR PRODUCT ENGINEERING DOES NOT RECOMMEND 18 AWG WIRE SIZE.

*WARNING
 ON INSTALLATION, SET WIRE DISC, ITEM 40 TO LARGEST WIRE SIZE SETTING. USE OF SETTINGS BELOW MINIMUM REQUIRED CRIMP HEIGHT SETTING WILL CAUSE DAMAGE TO CRIMP TOOLING.

ATLANTIC VERSION
 Shown on sheets 1 of 4 & 2 of 4
 (Pacific version shown on sheets 3 of 4 & 4 of 4)

SET UP GAUGE		LOC	DIST	REVISIONS					
2119599-1		A	66	P	LTN	DESCRIPTION	DATE	OWN	APVD
				D		ECR-16-014949	21OCT2016	KH	LZ
				E		ECR-18-013866	31AUG2018	MZ	GB

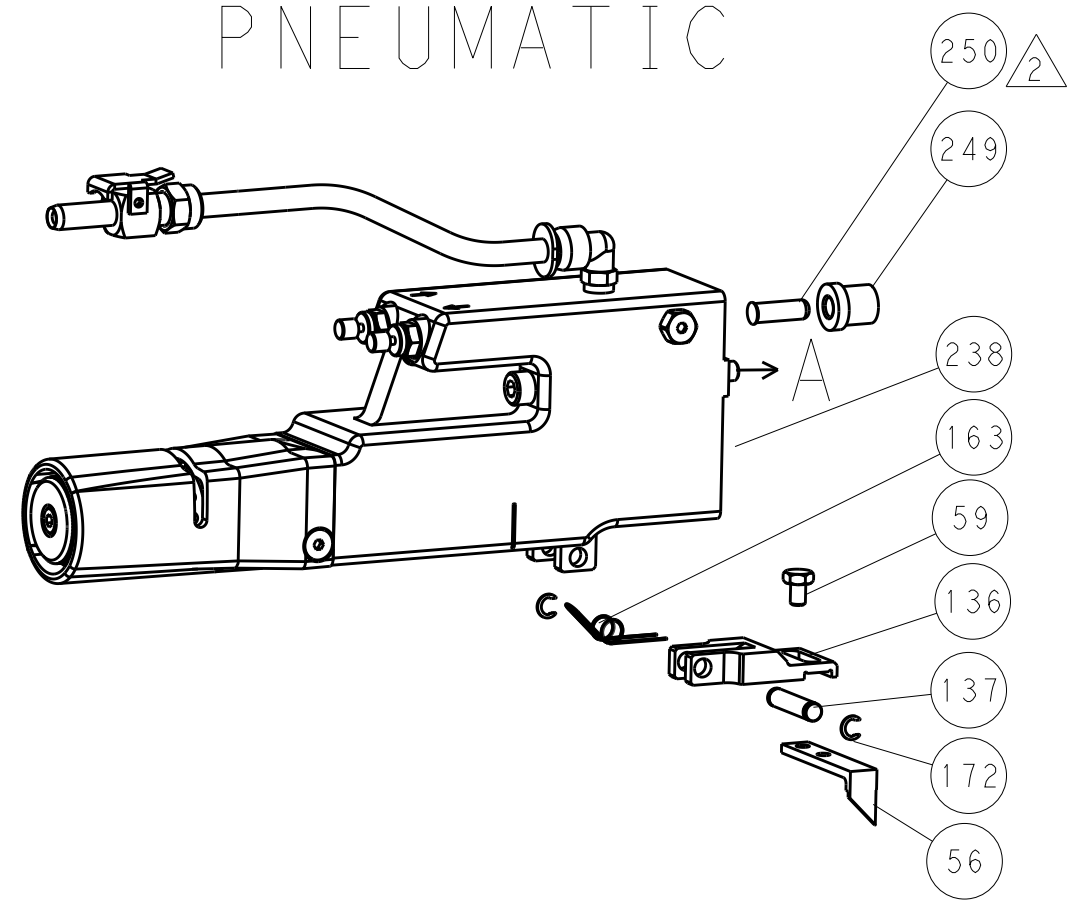
-	-	1	-	-	2119957-2	APPLICATOR SHIM PACK			260
-	1	-	1	1	8-21084-0	O-RING, .676 ID, .070 DIA. MAT.			252
-	-	-	-	1	2119640-1	PUSH ROD, AIR FEED			250
-	-	-	-	1	1803259-1	BUSHING, FLANGED			249
-	-	-	-	1	2119641-1	FEED CAM, AIR FEED			248
-	1	-	1	1	2119798-1	DETENT PIN			247
-	1	-	1	1	1-22279-3	SPRING, COMPRESSION			246
-	-	1	-	-	2119758-1	RAM, AMP STYLE, SIDE FEED, NON-ADJ.			245
-	1	1	1	1	7-18023-7	SCR, SKT HD CAP M3 X 4.0			241
-	-	2	2	-	2168400-6	SHCS, LOW HEAD, RoHS, M5 X 16			240
-	-	-	-	1	2063440-1	AIR FEED MODULE			238
-	-	1	1	-	2119740-2	TAG IDENTIFICATION			213
-	-	1	1	-	1901094-3	SPACER, FEEDER			198
-	-	-	-	2	21045-3	RING, RETAIN, EXTERN, 3/16 CRESCENT			172
-	1	1	1	1	994969-1	MAGNET, RARE EARTH HIGH ENERGY			166
-	REF	REF	REF	REF	994970-2	COUNTER, MAGNETIC			164
-	-	-	-	1	240638-1	SPRING, FEED FINGER			163
-	-	-	-	1	3-23627-7	PIN, RETAIN, GRVD, 3/16 X .854			137
-	-	-	-	1	2119799-1	HOLDER, FEED FINGER, AF			136
-	-	REF	REF	-	SEE NOTE 4	MEMORY CHIP, PROGRAMMED			135
-	-	1	1	-	1633743-1	SERVO FEED LATCH ASM			133
-	1	1	1	1	1-18028-2	WASHER, FLAT, REG M4			119
-	-	REF	REF	-	2119944-1	FEED FINGER ASSEMBLY, SF			117
-	1	1	1	1	2119955-1	ASSY, LUBRICATOR, SIDE FEED			113
-	1	1	1	1	455888-5	SPACER, CRIMPER			82
-	1	1	1	1	2119956-1	DOCUMENTATION PACKAGE			71
-	1	-	-	1	2119740-1	TAG IDENTIFICATION			67
-	2	2	2	2	2168078-1	SCREW, DRIVE, RH, RoHS, 2 x .188			66
-	1	-	-	1	2119793-1	LIMITER, ADJUSTMENT BOLT			63
-	3	-	3	3	992763-5	SCR, SET, SOC, CONE PNT, M3 x 4.0			62
-	1	1	1	1	2079383-4	SCR, BHSC, RoHS (M4 X 8)			60
-	-	-	-	1	5-18022-5	SCR, HEX HD CAP, M4 X 6.0			59
-	-	-	-	1	1338685-1	PAWL, FEED			56
-	4	4	4	4	2168400-1	SHCS, LOW HEAD, RoHS, M4 X 12			54
-	2	2	2	2	2168083-8	SCR, SKT HD CAP, RoHS, M4 X 16			53
-	1	1	1	1	1803382-2	HOLD DOWN, SPRING LOADED			50
-	-	-	-	1	18023-9	SCR, SKT HD CAP M4 X 6.0			49
-	1	1	1	1	2119656-9	APPLICATOR BASIC ASSEMBLY, SF			46
-	1	-	-	1	2119370-1	RAM, AMP STYLE, SIDE FEED			44
-	1	1	1	1	2079383-7	SCR, BHSC, RoHS (M8 X 25)			41
-	1	-	-	1	2119645-1	DISC, NUMBERED FA WIRE ADJUSTMENT			40
-	1	-	-	1	2119957-1	APPLICATOR SHIM PACK			39
-	1	1	1	1	2119644-2	RAM WASHER, PRECISION			38
-	1	1	1	1	2119085-1	FA HEAD, ATLANTIC STYLE			37
-	1	-	-	1	2119092-1	BOLT, ADJUSTMENT			35
-	1	1	1	1	1752356-3	SUPPORT, TERMINAL			34
-	2	2	2	2	2079383-5	SCR, BHSC, RoHS (M4 X 20)			33
-	1	1	1	1	2161328-1	HEX HEAD, FLANGED, M5 x 8mm LONG			32
-	1	1	1	1	1-1320908-2	SPACER, STRIP GUIDE			30
-	1	1	1	1	2119959-1	ASSEMBLY, STRIP GUIDE			29
-	1	1	1	1	1-455888-7	SPACER, CRIMPER			28
-	1	1	1	1	1320928-2	STRIP GUIDE			24
-	1	1	1	1	2168083-2	SCR, SKT HD CAP, RoHS, M4 X 8.0			21
-	1	1	1	1	1-18028-2	WASHER, FLAT, REG M4			20
-	1	1	1	1	2119533-1	STRIPPER, SIDE FEED			19
-	1	1	1	1	2119806-1	INSERT, SHEAR			13
-	1	1	1	1	3-22280-3	SPRING, COMPRESSION			12
-	1	1	1	1	1-356885-4	STOP, SHEAR			11
-	1	1	1	1	2119805-1	SHEAR HOLDER, FRONT			10
-	1	1	1	1	1803095-1	FLOATING SHEAR, FRONT			9
-	1	1	1	1	2-1633733-4	ANVIL, WIRE			8
-	1	1	1	1	4-240641-5	SPACER			7
-	-	-	-	-	-	-			6
-	1	1	1	1	2119757-4	DEPRESSOR, SHEAR			5
-	-	-	-	-	-	-			4
-	-	-	-	-	-	-			3
-	-	-	-	-	-	-			2
-	1	1	1	1	456411-9	CRIMPER, WIRE PREMIUM			1

DIMENSIONS:		TOLERANCES UNLESS OTHERWISE SPECIFIED:		DRAWN		CHK		APVD		NAME	
mm	0 PLC	±		X. ZHAO	13NOV2013	T. ELBIN	13NOV2013	L. ZHANG	13NOV2013	Ocean Side Feed Applicator	
	1 PLC	±								Customer Accessible Production Drawing	
	2 PLC	±								SCALE 1:2 SHEET 1 OF 4 REV E	
	3 PLC	±								RESTRICTED TO	
	4 PLC	±								A1 00779 ©=2266159	
MATERIAL	FINISH	±									

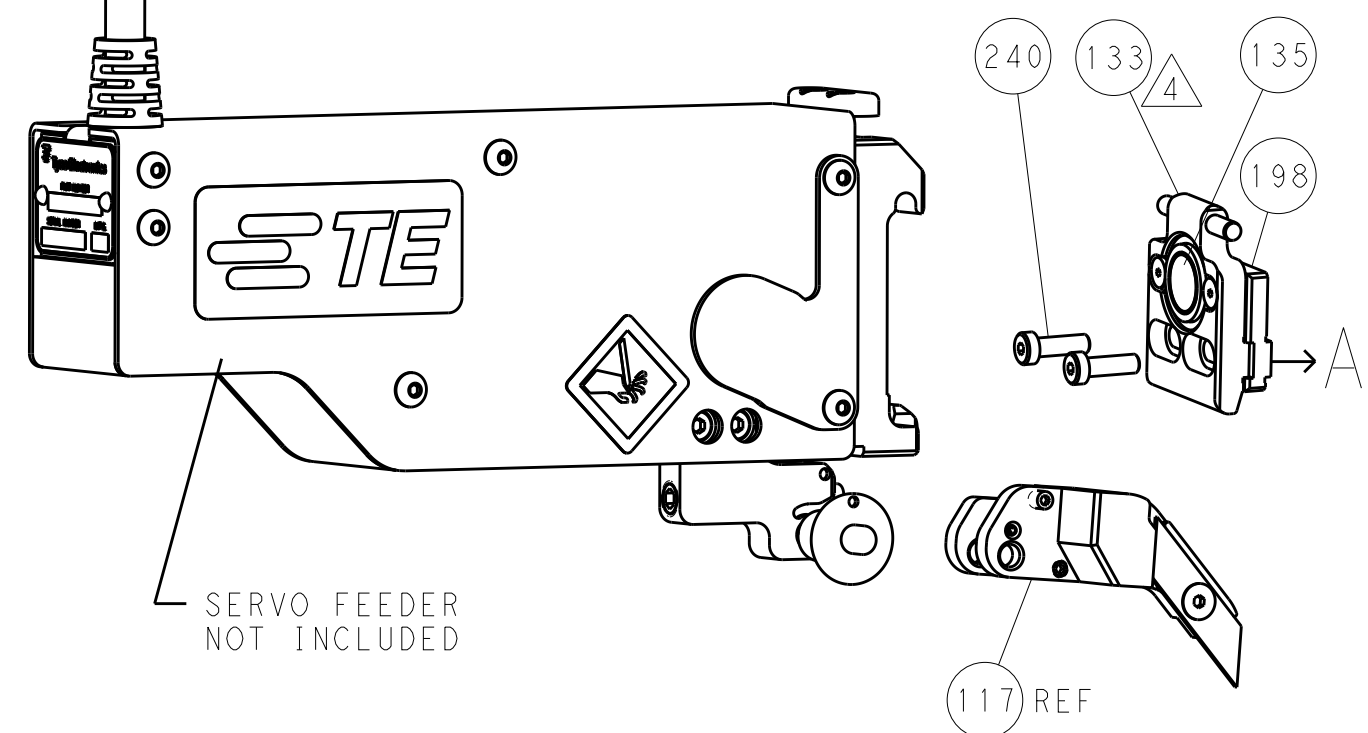
LOC		DIST		REVISIONS			
P	LTN	DESCRIPTION	DATE	DMN	APVD		
A	66	SEE SHEET 1					

FEED TYPE

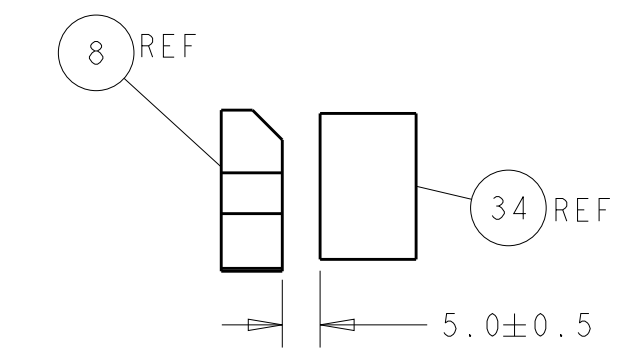
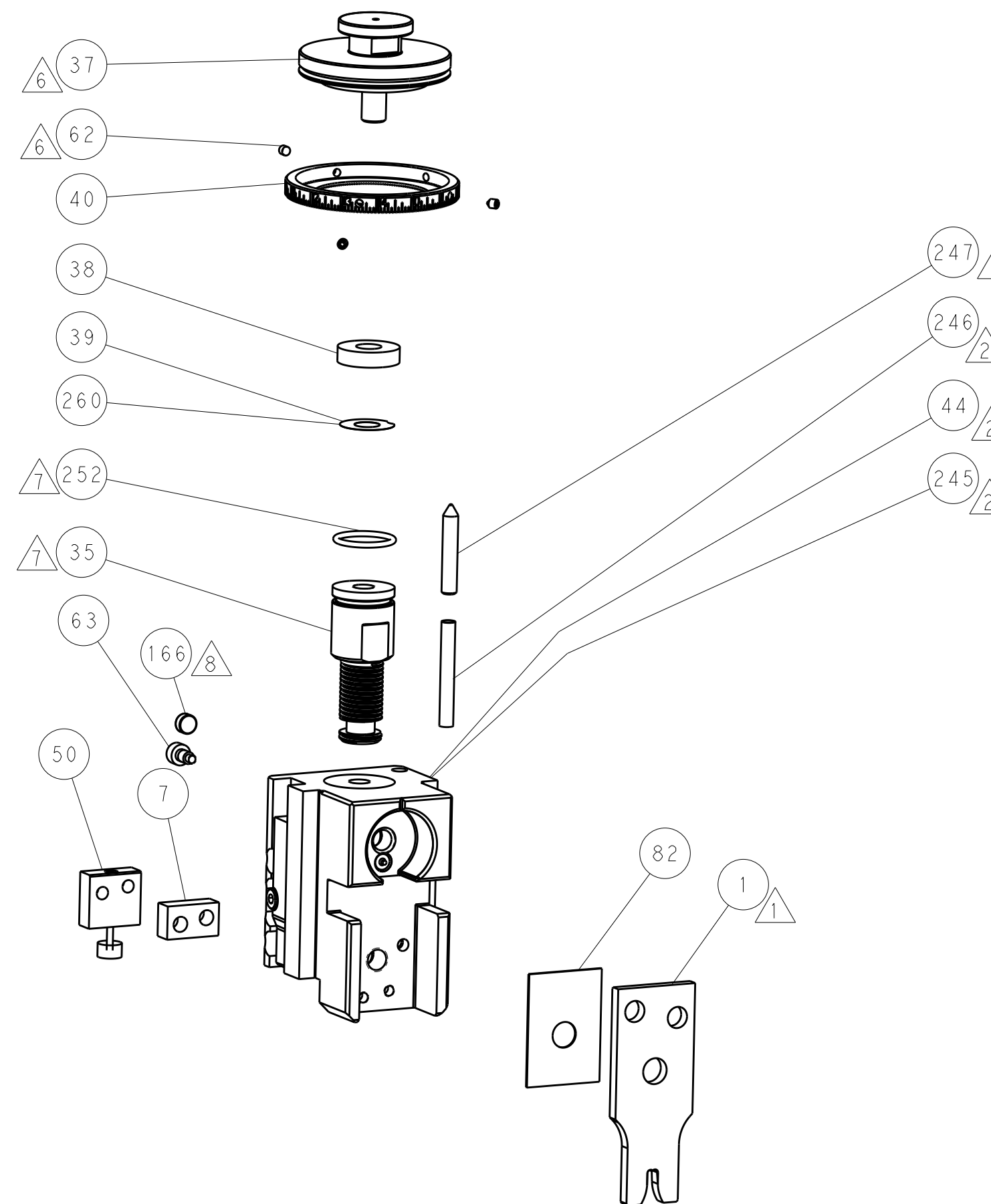
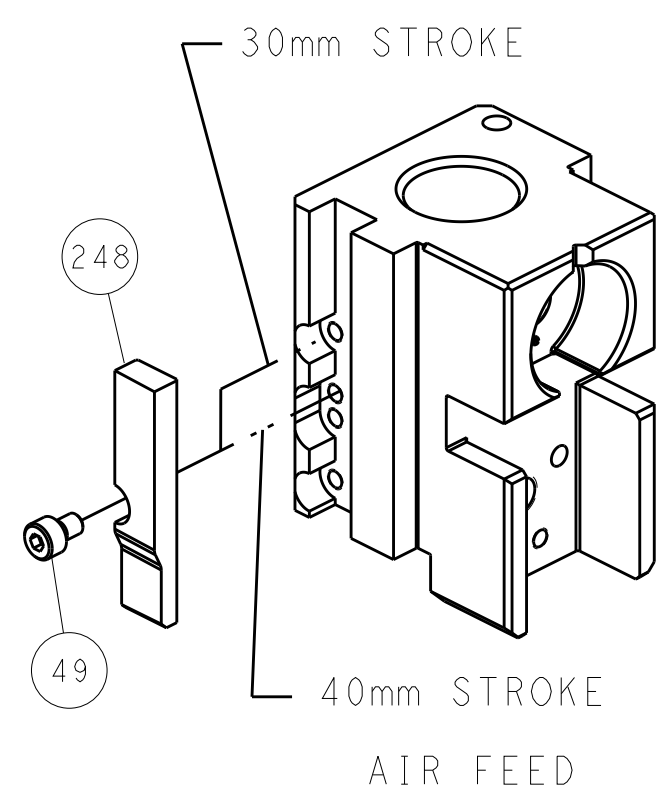
PNEUMATIC



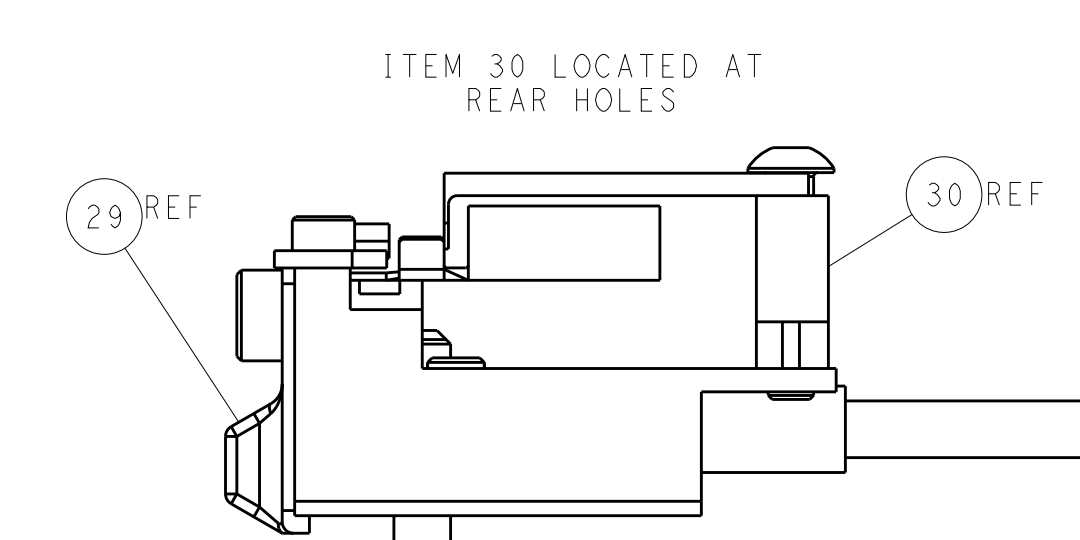
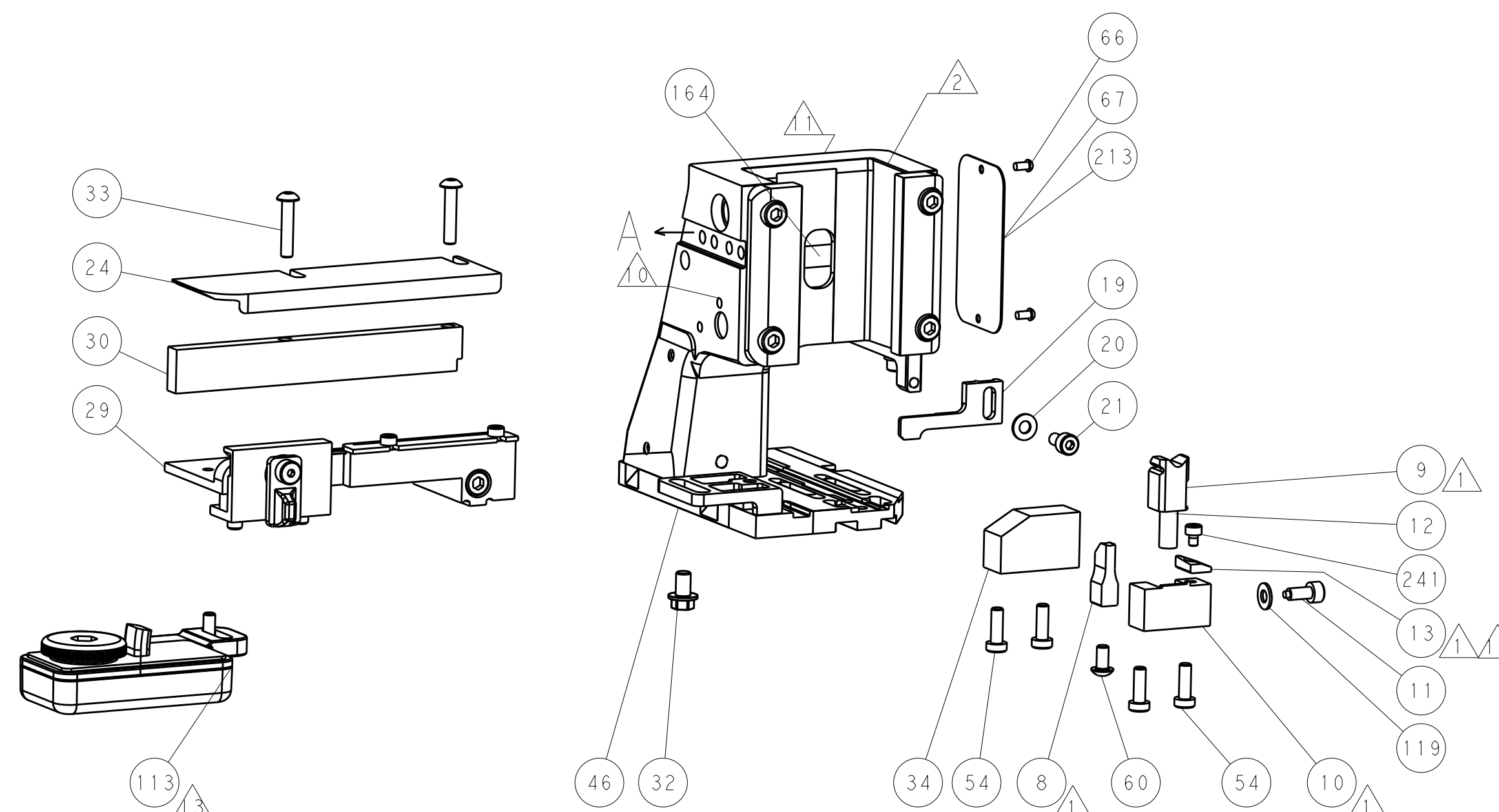
SERVO LATCH PLATE



CAM POSITION



TERMINAL SUPPORT LOCATION



FEED TRACK POSITION GUIDE BY WIRE BARREL

ATLANTIC VERSION
 Shown on sheets 1 of 4 & 2 of 4
 (Pacific version shown on sheets 3 of 4 & 4 of 4)

DIMENSIONS:		TOLERANCES UNLESS OTHERWISE SPECIFIED:		DWG: X.ZHAO 13NOV2013		TE Connectivity	
mm	0 PLC	±		CHK: T.ELBIN 13NOV2013	Harrisburg, PA 17105-3608		
	1 PLC	±		APVD: L.ZHANG 13NOV2013	NAME: Ocean Side Feed Applicator		
	2 PLC	±			SIZE: CAGE CODE: DRAWING NO: A1 00779 ©=2266159		
	3 PLC	±			RESTRICTED TO:		
	4 PLC	±			Customer Accessible Production Drawing		
	ANGLES	±			SCALE: 1:2 SHEET 2 OF 4 REV E		

PACIFIC VERSION TERMINATOR INTERFACE ADAPTER	PART NUMBER	REVISION	DESCRIPTION	FEED TYPE	APPLICATOR STYLE CONVERSION CHART					
					CONVERT TO	PART NUMBERS REQUIRED				
	2-2266159-2	E	FINE CRIMP HEIGHT ADJUST	PNEUMATIC	-	1338685-1	5-18022-5	-	-	-
					SERVO LATCH PLATE	2119951-1	8-2266159-5	1901094-3	1-1752354-1	2168400-6 (QUANTITY 2)
	2-2266159-5	E	FINE CRIMP HEIGHT ADJUST	SERVO LATCH PLATE ⁴	-	1338685-1	5-18022-5	-	-	-
					PNEUMATIC FEED	2119950-1	1338685-1	5-18022-5	2119641-2	2119799-1
2-2266159-7	E	FINE CRIMP HEIGHT ADJUST	NONE	-	-	-	-	-	-	
7-2266159-7	A	CRIMP TOOLING KIT	-	-	-	-	-	-	-	

APPLICATOR DATA		
CRIMP	SIZE	TYPE
WIRE	3.56 mm [.140]	F
INSUL	-	-
APPLICATOR INSTRUCTIONS 408-10389		

TERMINAL DATA: TE TERMINAL		TE CRIMP SPECIFICATION	
TERMINAL NAME: RECEPTACLE, TWIST LOCK			
WIRE STRIP LENGTH		INSULATION DIAMETER RANGE	
3.96-4.72 mm [1.56-.186 IN]			
TERMINAL APPLICATION SPECIFICATION	NONE		
TERMINALS APPLIED ¹⁰ ¹¹ ¹²			
TE TERMINAL	TE TERMINAL	TE TERMINAL	TE TERMINAL
63863-1	63863-2	2232552-1	2232552-2

WIRE SIZE	CRIMP HEIGHT mm [INCH]	CRIMP HEIGHT REFERENCE SETTING
14 AWG	2.16+/-0.05 [1.085+/-0.02]	5.4
16 AWG	1.98+/-0.05 [1.078+/-0.02]	7.7
¹³ 18 AWG	1.90+/-0.05 [1.075+/-0.02]	8.5

- RECOMMENDED SPARE PARTS
- ¹ GREASE BEARING SURFACES LIGHTLY
- 3. LUBRICATE DAILY PER THE APPLICATOR INSTRUCTION SHEET SUPPLIED WITH THE APPLICATOR.
- ⁴ APPLICATOR SPECIFIC DATA TO BE ENTERED INTO BLANK MEMORY CHIP AT ASSEMBLY. SEE BELOW FOR PART NUMBER:
PNEUMATIC FEED WITH "SMART APPLICATOR" CONVERSION: 8-2266159-4
SERVO FEED WITH "FINE CRIMP HEIGHT ADJUST": 8-2266159-5
- 5. ADJUSTMENT OF THE STRIPPER MAY BE REQUIRED WHEN MOVING THE APPLICATOR BETWEEN BENCH AND LEADMAKER APPLICATIONS.
- ⁶ APPLY PART NUMBER 1-23419-5 LOCTITE TO THREADS OF ITEMS 62.
- ⁷ GREASE THREADS, GROOVE AND O-RING ON ITEMS 139 & 152.
- ⁸ MAGNET MUST BE ORIENTED CORRECTLY IN ORDER TO PROPERLY ACTUATE THE COUNTER.
- ⁹ CRIMP HEIGHT REFERENCE SETTING WAS THE SETTING USED WHEN THE APPLICATOR WAS QUALIFIED AT THE FACTORY. ADJUSTMENT MAY BE NECESSARY WHEN RUNNING APPLICATOR IN THE FIELD.
- ¹⁰ TERMINAL PITCH NOT COMPATIBLE WITH MECHANICAL FEED.
- ¹¹ TO CONVERT THE APPLICATOR TO A NON-CARRIER CUTTING STYLE, REMOVE ITEM 13 AND ATTACH TO THE LOCATION ON BACK SIDE OF THE HOUSING. REFER TO INSTRUCTION SHEET FOR ADDITIONAL INFORMATION.
- ¹² TERMINAL LUBRICANT IS RECOMMENDED.
- ¹³ APPLICATOR PRODUCT ENGINEERING DOES NOT RECOMMEND 18 AWG WIRE SIZE.

*WARNING
 ON INSTALLATION, SET WIRE DISC, ITEM 40 TO LARGEST WIRE SIZE SETTING. USE OF SETTINGS BELOW MINIMUM REQUIRED CRIMP HEIGHT SETTING WILL CAUSE DAMAGE TO CRIMP TOOLING.

PACIFIC VERSION
 Shown on sheets 3 of 4 & 4 of 4
 (Atlantic version shown on sheets 1 of 4 & 2 of 4)

SET UP GAUGE	LOC	DIST	REVISIONS			
2119599-1	A	66	REV	DATE	BY	APPV
			-	SEE SHEET 1	-	-

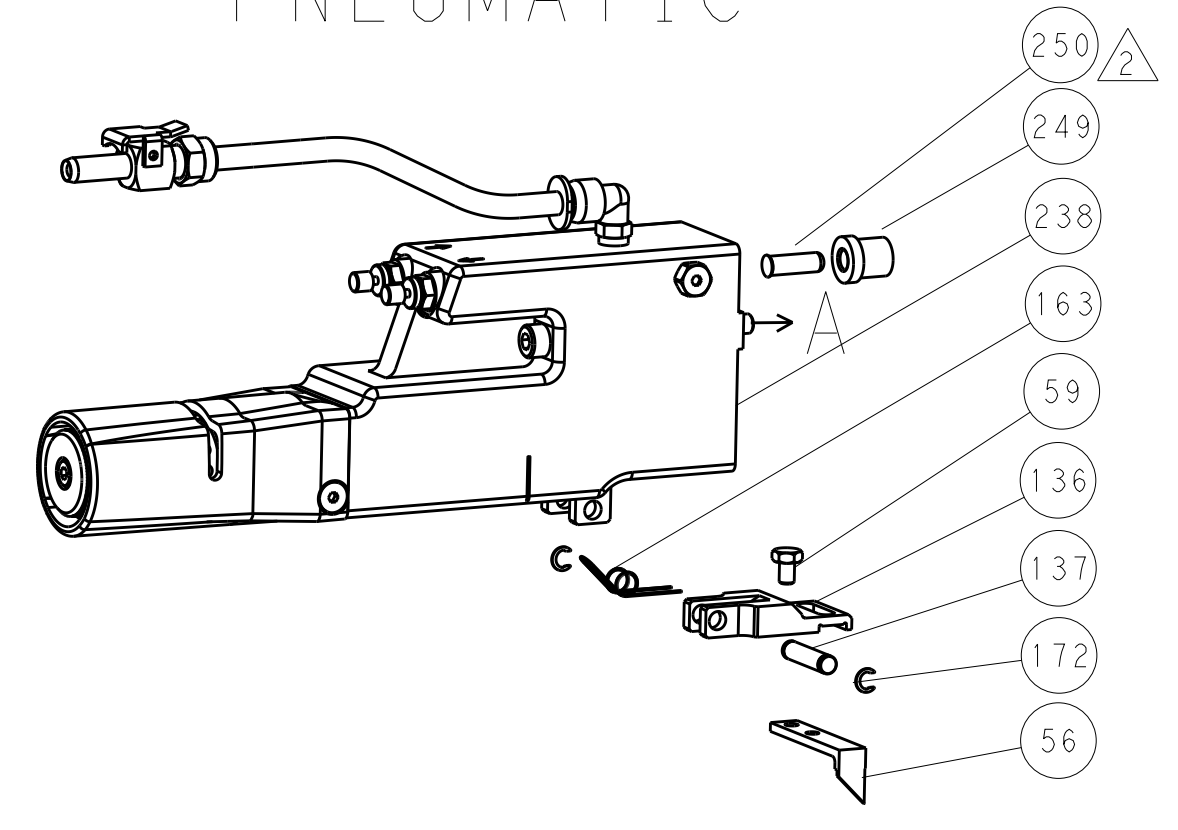
-	1	1	1	2119782-1	FINE ADJUST HEAD ASM, PACIFIC STYLE	251
-	-	-	1	2119640-1	PUSH ROD, AIR FEED	250
-	-	-	1	1803259-1	BUSHING, FLANGED	249
-	1	1	1	1-22279-3	SPRING, COMPRESSION	246
-	1	1	1	7-18023-7	SCR, SKT HD CAP M3 X 4.0	241
-	-	2	-	2168400-6	SHCS, LOW HEAD, RoHS, M5 X 16	240
-	-	-	1	2063440-1	AIR FEED MODULE	238
-	-	1	-	2119740-2	TAG, IDENTIFICATION	213
-	-	1	-	1901094-3	SPACER, FEEDER	198
-	-	-	2	21045-3	RING, RETAIN, EXTERN, 3/16 CRESCENT	172
-	1	1	1	994969-1	MAGNET, RARE EARTH HIGH ENERGY	166
-	REF	REF	REF	994970-2	COUNTER, MAGNETIC	164
-	-	-	1	240638-1	SPRING, FEED FINGER	163
⁷	-	1	1	8-21084-1	O-RING, .801 ID, .070 DIA. MAT.	152
-	-	-	1	2119641-2	FEED CAM, AIR FEED	151
-	1	1	1	2119798-2	DETENT PIN	145
-	1	1	1	2079383-8	SCR, BHSC, RoHS (M4 X 16)	144
-	4	4	4	2168400-5	SHCS, LOW HEAD, RoHS, M4 X 20	143
-	1	1	1	1-2119656-0	APPLICATOR BASIC ASSEMBLY, SF	141
-	1	1	1	2119650-1	RAM, ASIAN STYLE, SIDE FEED	140
⁷	-	1	1	2119092-2	BOLT, ADJUSTMENT	139
-	-	-	1	3-23627-7	PIN, RETAIN, GRVD, 3/16 X .854	137
-	-	-	1	2119799-1	HOLDER, FEED FINGER, AF	136
-	-	REF	-	SEE NOTE 4	MEMORY CHIP, PROGRAMMED	135
-	-	1	-	1633743-1	SERVO FEED LATCH ASM	133
-	1	1	1	1-18028-2	WASHER, FLAT, REG M4	119
-	-	REF	-	2119944-1	FEED FINGER ASSEMBLY, SF	117
¹²	-	1	1	2119955-1	ASSY, LUBRICATOR, SIDE FEED	113
-	1	1	1	455888-5	SPACER, CRIMPER	82
-	1	1	1	2119956-1	DOCUMENTATION PACKAGE	71
-	1	-	1	2119740-1	TAG, IDENTIFICATION	67
-	2	2	2	2168078-1	SCREW, DRIVE, RH, RoHS, 2 x .188	66
-	1	1	1	2119793-1	LIMITER, ADJUSTMENT BOLT	63
⁶	-	3	3	992763-5	SCR, SET, SOC, CONE PNT, M3 X 4.0	62
-	-	-	1	5-18022-5	SCR, HEX HD CAP, M4 X 6.0	59
-	-	-	1	1338685-1	PAWL, FEED	56
-	2	2	2	2168083-8	SCR, SKT HD CAP, RoHS, M4 X 16	53
-	1	1	1	1803382-2	HOLD DOWN, SPRING LOADED	50
-	-	-	1	18023-9	SCR, SKT HD CAP M4 X 6.0	49
-	1	1	1	2079383-7	SCR, BHSC, RoHS (M8 X 25)	41
-	1	1	1	2119645-1	DISC, NUMBERED FA WIRE ADJUSTMENT	40
-	1	1	1	2119957-1	APPLICATOR SHIM PACK	39
-	1	1	1	2119644-2	RAM WASHER, PRECISION	38
-	1	1	1	1752356-3	SUPPORT, TERMINAL	34
-	2	2	2	2079383-5	SCR, BHSC, RoHS (M4 X 20)	33
-	1	1	1	2161328-1	HEX HEAD, FLANGED, M5 X 8mm LONG	32
-	1	1	1	1-1320908-2	SPACER, STRIP GUIDE	30
-	1	1	1	2119959-1	ASSEMBLY, STRIP GUIDE	29
-	1	1	1	1-455888-7	SPACER, CRIMPER	28
-	1	1	1	1320928-2	STRIP GUIDE	24
-	1	1	1	2168083-2	SCR, SKT HD CAP, RoHS, M4 X 8.0	21
-	1	1	1	1-18028-2	WASHER, FLAT, REG M4	20
-	1	1	1	2119533-1	STRIPPER, SIDE FEED	19
¹	-	1	1	2119806-1	INSERT, SHEAR	13
-	1	1	1	3-22280-3	SPRING, COMPRESSION	12
-	1	1	1	1-356885-4	STOP, SHEAR	11
¹	-	1	1	2119805-1	SHEAR HOLDER, FRONT	10
¹	-	1	1	1803095-1	FLOATING SHEAR, FRONT	9
¹	1	1	1	2-1633733-4	ANVIL, WIRE	8
-	1	1	1	4-240641-5	SPACER	7
-	-	-	-	-	-	6
-	1	1	1	2119757-4	DEPRESSOR, SHEAR	5
-	-	-	-	-	-	4
-	-	-	-	-	-	3
-	-	-	-	-	-	2
¹	1	1	1	456411-9	CRIMPER, WIRE PREMIUM	1

DIMENSIONS:		TOLERANCES UNLESS OTHERWISE SPECIFIED:		DRAWN		CHK		APV		DATE	
mm	0 PLC	±		X. ZHAO	13NOV2013	T. ELBIN	13NOV2013	L. ZHANG	13NOV2013	NAME	
	1 PLC	±		TE Connectivity		Harrisburg, PA 17105-3608		PRODUCT SPEC		Ocean Side Feed	
	2 PLC	±		Customer Accessible Production Drawing		SCALE		1:2		SHEET 3 OF 4	
	3 PLC	±		Customer Accessible Production Drawing		SCALE		1:2		SHEET 3 OF 4	
	4 PLC	±		Customer Accessible Production Drawing		SCALE		1:2		SHEET 3 OF 4	
	ANGLES	±		Customer Accessible Production Drawing		SCALE		1:2		SHEET 3 OF 4	
MATERIAL	FINISH	±		Customer Accessible Production Drawing		SCALE		1:2		SHEET 3 OF 4	
		±		Customer Accessible Production Drawing		SCALE		1:2		SHEET 3 OF 4	

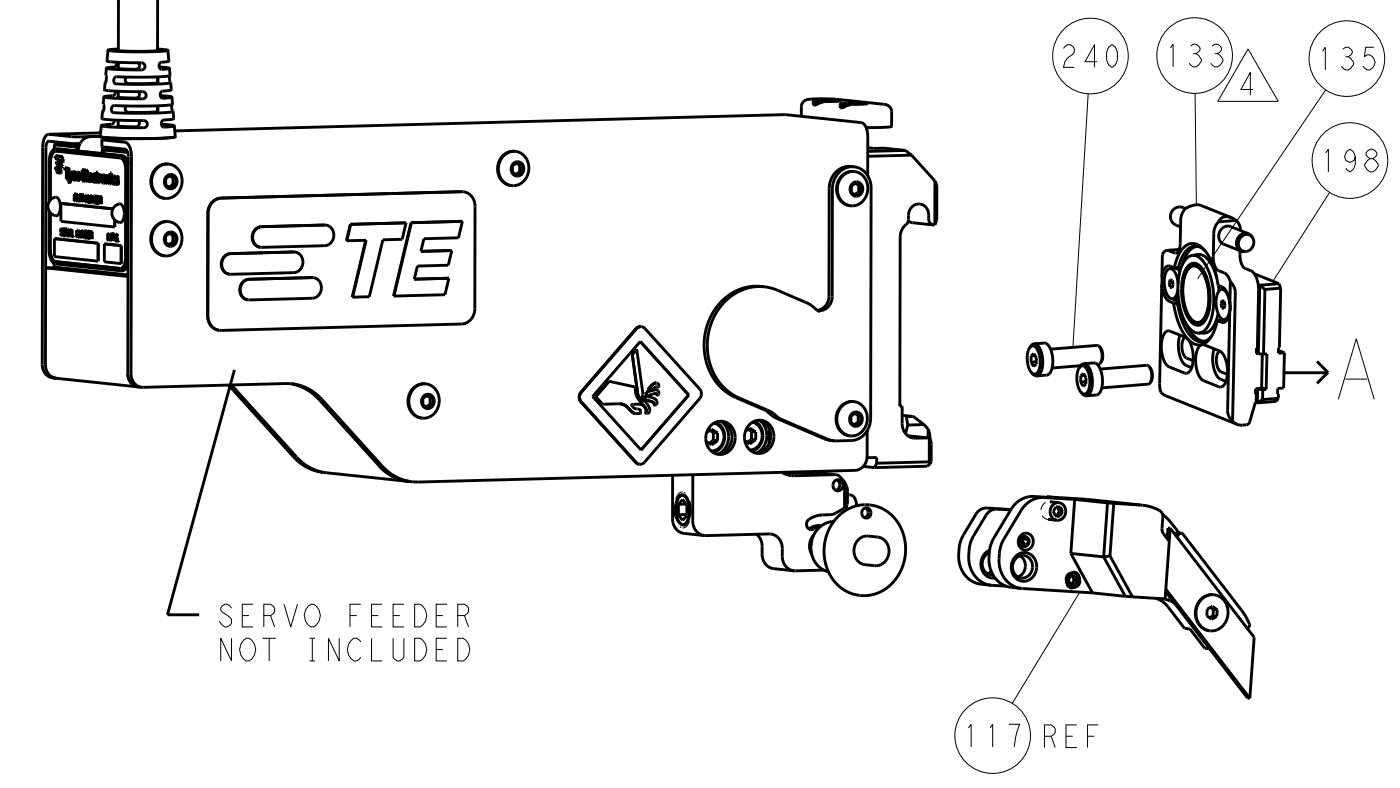
LOC		DIST		REVISIONS			
A	66	P	LTM	DESCRIPTION	DATE	DWN	APVD
		-		SEE SHEET 1			

FEED TYPE

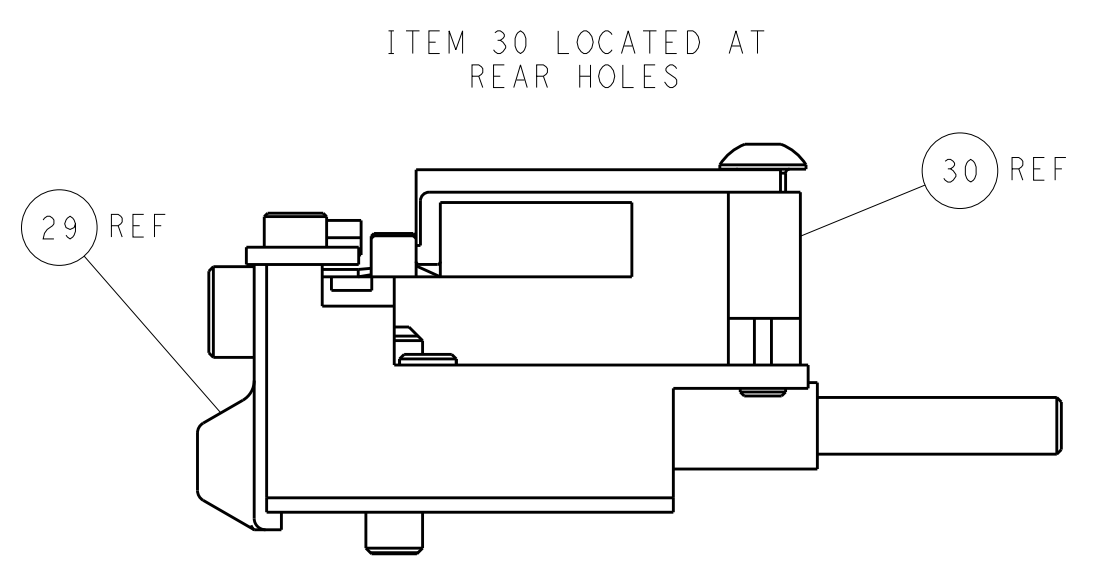
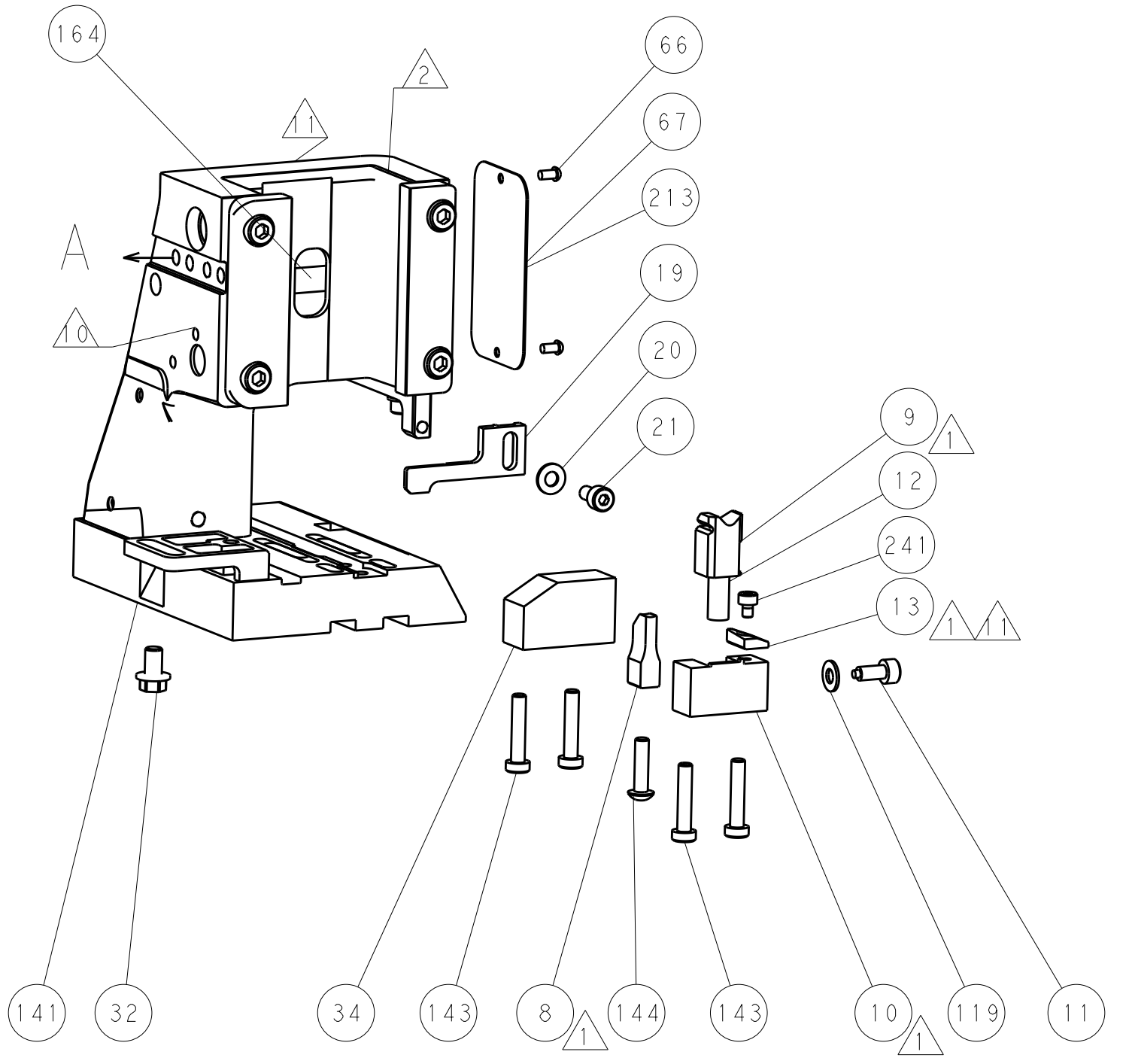
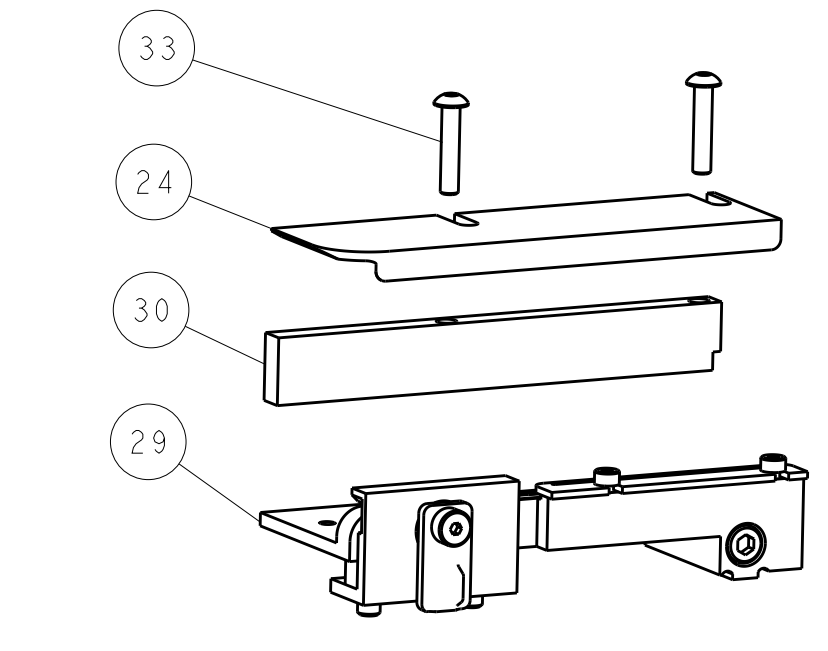
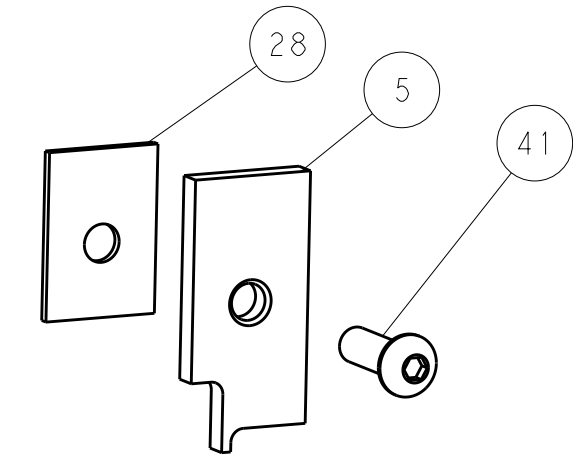
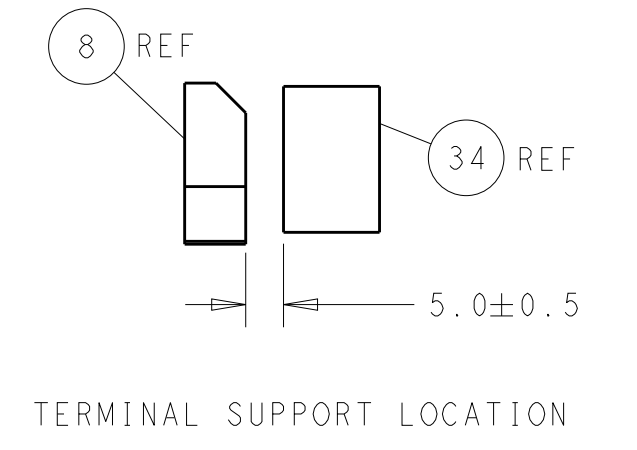
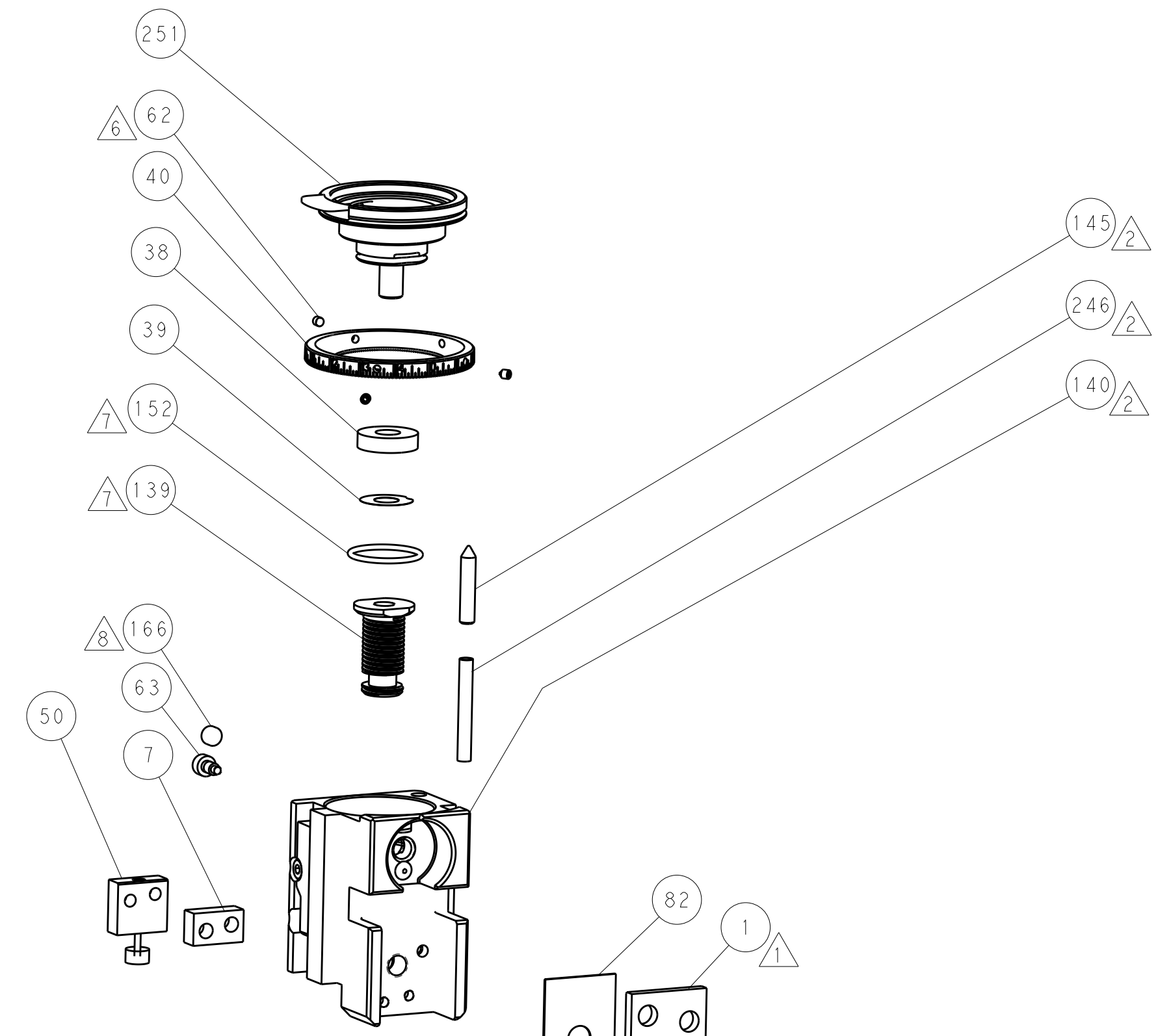
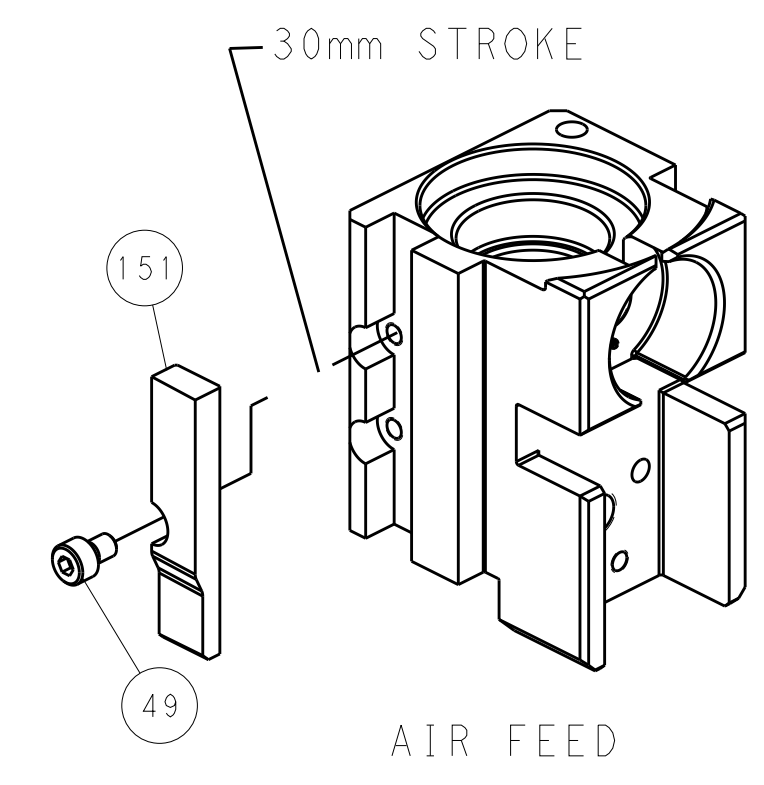
PNEUMATIC



SERVO LATCH PLATE



CAM POSITION



PACIFIC VERSION
 Shown on sheets 3 of 4 & 4 of 4
 (Atlantic version shown on sheets 1 of 4 & 2 of 4)

<small>THE DRAWING IS UNPUBLISHED. IT IS SUBJECT TO CHANGE WITHOUT NOTICE AND WITHOUT LIABILITY. ANY CHANGES WILL BE CONTACTED FOR THE LATEST REVISION.</small>		DWN: X_ZHAO 13NOV2013 CHK: T_ELFIN 13NOV2013 APVD: L_ZHANG 13NOV2013	TE Connectivity Harrisburg, PA 17105-3608
DIMENSIONS: mm TOLERANCES UNLESS OTHERWISE SPECIFIED: 0 PLC ± 1 PLC ± 2 PLC ± 3 PLC ± 4 PLC ± ANGLES ±		NAME: Ocean Side Feed Applicator PRODUCT SPEC: APPLICATION SPEC: WEIGHT: SCALE: 1:2	SIZE: A1 CAGE CODE: 00779 DRAWING NO: C=2266159 SHEET 4 OF 4 REV E