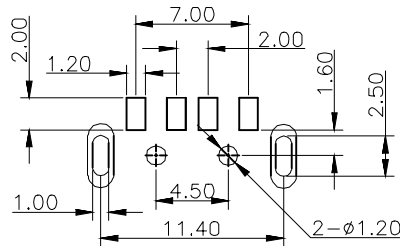
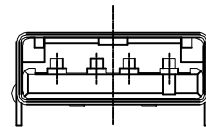
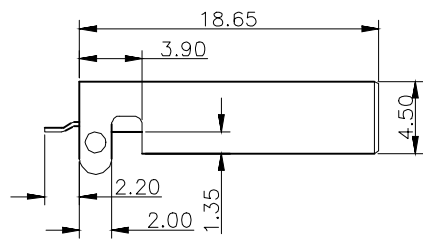
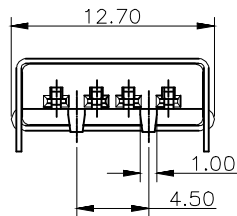
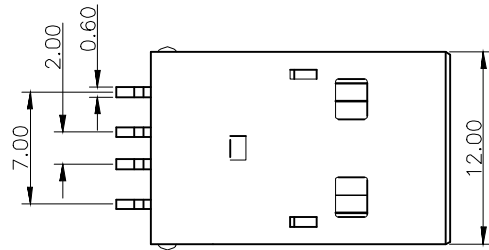


① **USB2.0 COMPLIANT**



RECOMMENDED P.C.B LAYOUT

**NOTES:**

- 1.Material:
  - 1.1 Housing: LCP+30%GF UL94V-0, Color White
  - 1.2 Shell: SPCC
  - 1.3 Contact : Brass
2. FINISH:
  - 2.1 Contact Area: Selective 30u"Au
  - Solder Area: Tin Plated
  - Under: Ni Plated
- 3.MECHANICAL:
  - 3.1 Mating Force:3.57kgf Max.
  - 3.2 Unmating Force:1.02kgf Min
  - 3.3 Durability:1500 cycles Min
- 4.ELECTRICAL:
  - 4.1 Current Rating:1.5A
  - 4.2 Dielectric Strength:500V AC FOR 1 MINUTE
  - 4.3 Contact Resistance:30mΩ Max
  - 4.4 Insulation Resistance:1000 MΩ Min
- 5.Operating temperature: -55°C TO +85°C
- 6.PACKIING: Tray

**RoHS compliant**

| Scale            | Free  |          |              |        | Date                             | Name       | Customer-No.                               |       |
|------------------|-------|----------|--------------|--------|----------------------------------|------------|--------------------------------------------|-------|
| <b>TOLERANCE</b> |       |          |              |        | Drawn                            | 10.06.2014 | Ray                                        |       |
| .X               | ±0.30 |          |              |        | Approved                         | 10.06.2014 | Ray                                        |       |
| .XX              | ±0.20 |          |              |        |                                  |            | ASSMANN WSW-No.<br><b>A-USB/2-A-LP-SMT</b> |       |
| .XXX             | ±0.10 |          |              |        |                                  |            | Drawing-No.                                |       |
| DIM              | TOL   | ① Update | 12.08.2019   | Xavier | <b>ASSMANN</b><br>WSW components |            | <b>ASS 6379 CO</b>                         | rev01 |
| X.°              | ±5°   | ② Drawn  | 10.06.2014   | Ray    |                                  |            | Replace                                    | SHEET |
| UNIT             | mm    | Id.      | Modification | Date   | Name                             |            |                                            |       |