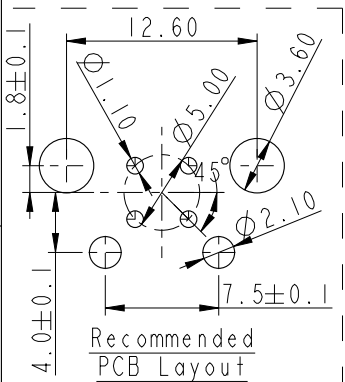
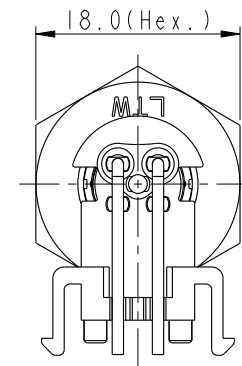
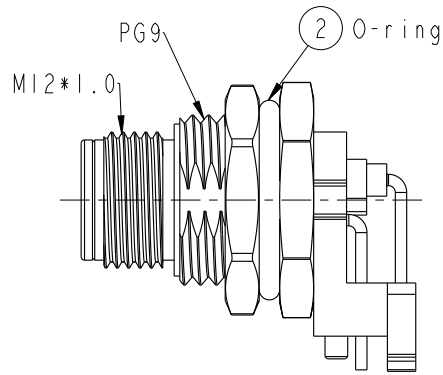
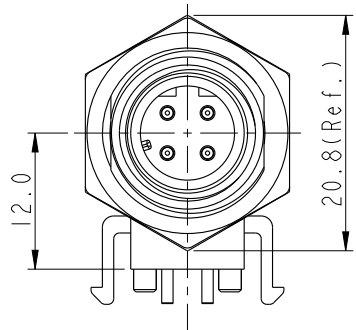
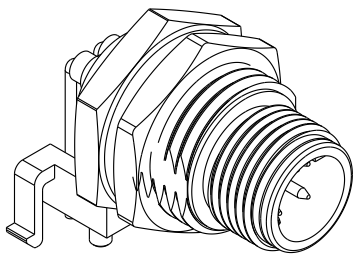
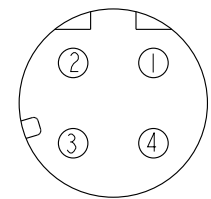


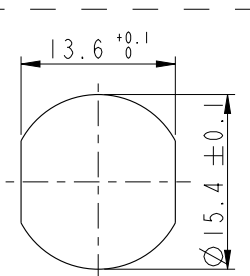
REV.	ECN NO.	DATE	SIGN	DESCRIPTION
B	C191427	2019/08/14	Nan_Su	Change Views



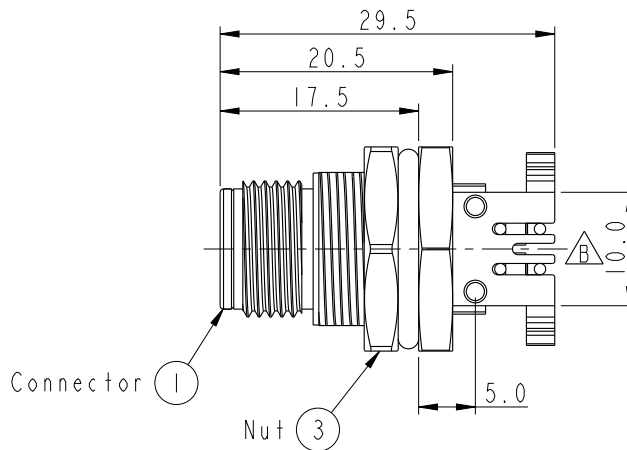
**ALTW**  
**CONFIDENTIAL**  
**2019-08-14**  
**R&D DEPT.**



Conn.  
Pin Assignments  
Front View



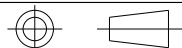
Recommended  
Panel Cut-Out



Note:

- \* Ⓞ Important Dimension To Check.
- \* Waterproof Rate: IP68  
 IP68: 1M Depth Of Water In 24hours
- \* Connector: Nylon+GF, Black
- \* Male Pin: Copper Alloy, Gold Plated
- \* Shell: Zinc Alloy, Nickel Plated.
- \* Nut: Zinc Alloy, Nickel Plated.
- \* O-ring: Silicon, Black
- \* Boardlock: PBT+PC, Black
- \* For Panel Thickness Max. 4.5mm
- \* For PCB Thickness Max. 1.6mm

UNIT: mm



TOLERANCE	
.X	±0.25
.XX	±0.1
.XXX	±0.05
ANGLES	±1°

TITLE M12 DCODE, 90° PANEL 4PIN MCONN MPIN			
SCALE 3:2	SIZE A4	SHEET 1 OF 1	
REV. B	WC-REV. A.1	Ⓞ: Inspection item	

**Amphenol LTW**  
**安費諾亮泰企業股份有限公司**

ITEM NO. M12D-04PMMR-SF8001	DRAWN BY Nan_Su	DATE 2019-08-14
DWG NO. M12D-04PMMR-SF8001	CHECKED BY Feng_Li	DATE 2019-08-14
CUSTOMER ALTW	APPROVED BY Jerry	DATE 2019-08-14

THIS DOCUMENT IS SUBJECT TO CHANGE WITHOUT NOTICE. IT IS CONFIDENTIAL AND A PROPERTY OF Amphenol LTW. DISCLOSURE TO THIRD PARTY HAS TO BE AUTHORIZED BY Amphenol LTW.