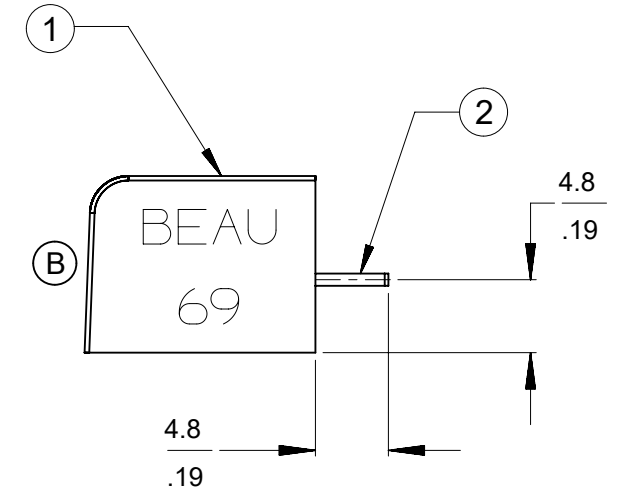
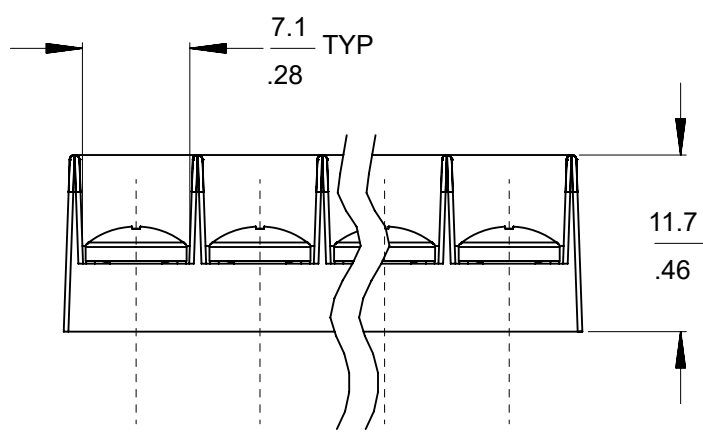
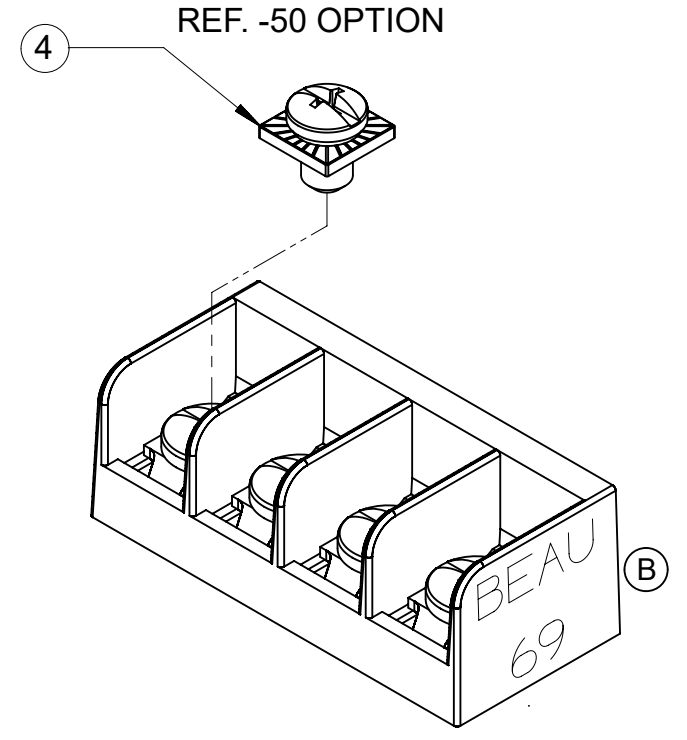
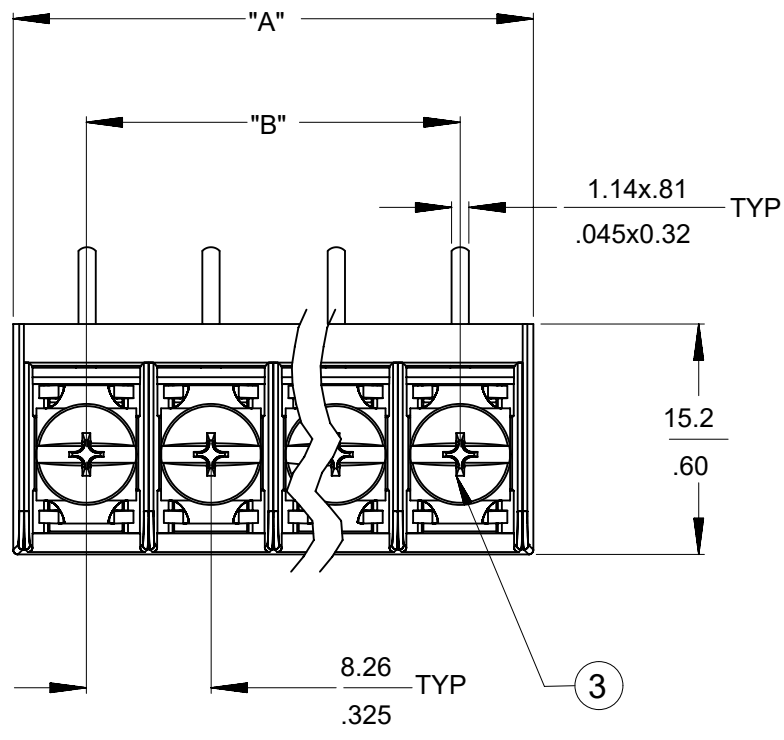


NO. OF CIRCUITS	DIM. "A"		DIM. "B"		ASSEMBLY MATERIAL NO. (-50 OPT)
	mm	in	mm	in	
05	42.7	1.68	33.0	1.30	386915905



- NOTES:
 1. MATERIAL: SEE TABLE
 2. FINISHES: SEE TABLE.
 3. "XX" REFERS TO THE QUANTITY OF CIRCUITS.
 4. ROHS COMPLIANT.

4	XX	SCREW #6-32X.155 PAN PHSLZN/BR/STEEL -50 OPT	STEEL	ZN, CLEAR CHROMATE
3	XX	SCREW #6-32X.160 PAN PHSLNI/BRASS (STD) (B)	BRASS	NICKEL PLATE
2	XX	TERMINAL, PC	BRASS	TIN PLATE
1	1	INSULATOR	POLYESTER (PBT)	BLACK
ITEM	QTY.	DESCRIPTION	MATERIAL	FINISH

THIS DRAWING CONTAINS INFORMATION THAT IS PROPRIETARY TO MOLEX ELECTRONIC TECHNOLOGIES, LLC AND SHOULD NOT BE USED WITHOUT WRITTEN PERMISSION

DIMENSION UNITS MM/IN	SCALE 2:1	CURRENT REV DESC: OBSOLETE PART NUMBERS AS PER PCN#510807	molex		
GENERAL TOLERANCES (UNLESS SPECIFIED)					
4 PLACES ±	±	EC NO: 726454	PRODUCT CUSTOMER DRAWING		
3 PLACES ±	± 0.005	DRWN: LIKITV 2022/10/20	DOCUMENT NUMBER		
2 PLACES ±	± 0.13 ± 0.01	CHK'D: GGA 2022/11/30	SD-38691-003		
1 PLACE ±	± 0.3 ±	APPR: GGA 2022/11/30	PSD 001 C1		
0 PLACES ±	±	INITIAL REVISION:	REVISION		
ANGULAR TOL ± 2.0°		DRWN: AHIDALGO 2007/04/02	SHEET NUMBER		
		APPR: JMACNEIL 2007/04/02	1 OF 1		
DRAFT WHERE APPLICABLE MUST REMAIN WITHIN DIMENSIONS	THIRD ANGLE PROJECTION	DRAWING	SERIES	MATERIAL NUMBER	CUSTOMER
		B-SIZE	38691	SEE CHART	GENERAL MARKET