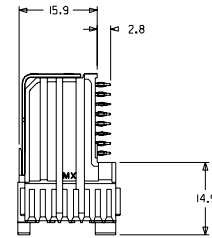
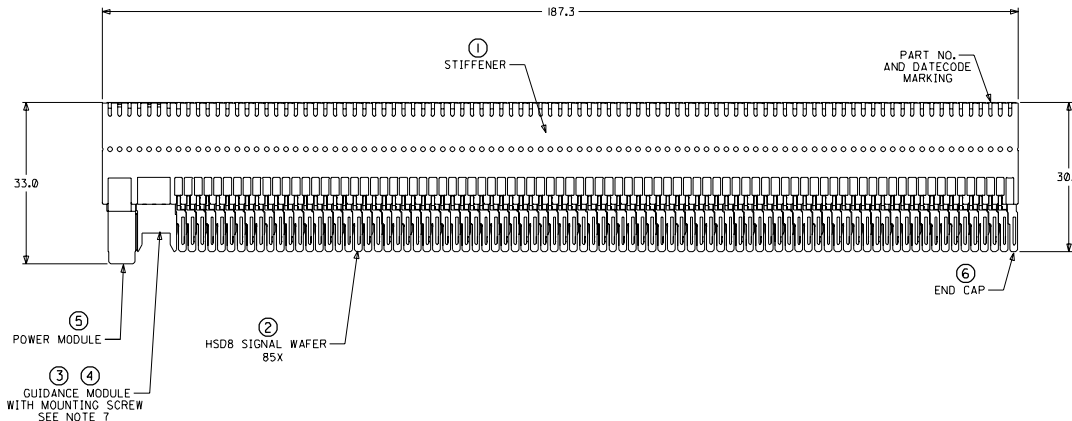
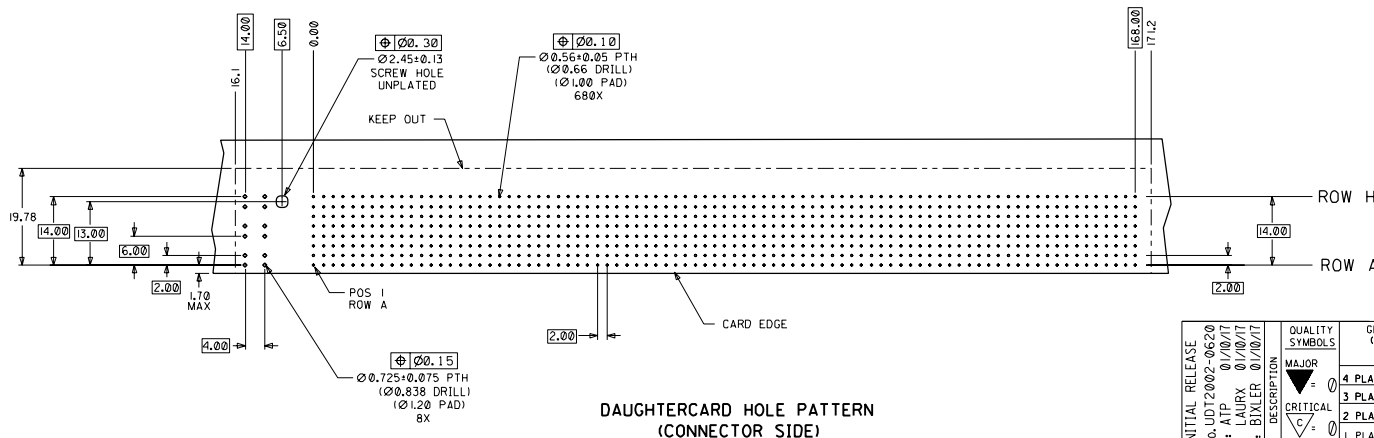
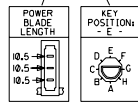
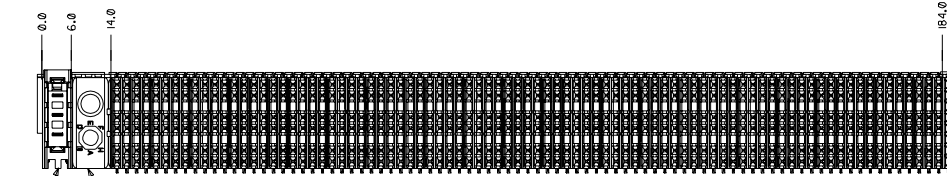


CUSTOMER: PROCKET NETWORKS



NOTES: (UNLESS OTHERWISE SPECIFIED)

- MATERIALS: HOUSING - LIQUID CRYSTAL POLYMER (LCP), GLASS-FILLED, UL94V-0, BLACK. TERMINALS - HIGH PERFORMANCE COPPER ALLOY. STIFFENER - STAINLESS STEEL.
- FINISH: SELECTIVE GOLD (Au) IN CONTACT AREA, 0.00076mm MINIMUM THICKNESS; SELECTIVE TIN/LEAD (Sn/Pb) ON PCB TAILS, NICKEL (Ni) OVERALL.
- REFER TO MOLEX PRODUCT SPECIFICATION PS-74031-999 FOR PERFORMANCE SPECIFICATIONS.
- REFER TO MOLEX DOCUMENT SD-74681-002 FOR ADDITIONAL DETAIL ON THE HS08 SIGNAL WAFER.
- REFER TO MOLEX DOCUMENT SD-74037-006 FOR ADDITIONAL DETAIL ON THE GUIDANCE MODULE.
- REFER TO MOLEX DOCUMENT SD-74026-002 FOR ADDITIONAL DETAIL ON THE POWER MODULE.
- MOUNTING SCREWS WILL BE BAGGED WITH EACH CONNECTOR.
- PARTS ARE PACKAGED IN TUBES PER PK-70873-5041.



ITEM	PART NUMBER	DESCRIPTION	QTY
1	74046-0187	STIFFENER	1
2	74681-0001	HSD8 WAFER	85
3	74037-0005	POLARIZING/GUIDE MODULE	1
4	73726-0000	GUIDE MODULE MNTG SCREW	1
5	74026-8333	POWER MODULE	1
6	74038-1001	END CAP	1

INITIAL RELEASE EC NO. UDT2002-0620 DRAWN: ATP 01/10/17 CHECKED: LAURX 01/10/17 APPR: BIXLER 01/10/17	QUALITY SYMBOLS MAJOR: ∇ CRITICAL: ∇	GENERAL TOLERANCES (UNLESS SPECIFIED) 4 PLACES ± 0.15 mm 3 PLACES ± 0.20 mm 2 PLACES ± 0.30 mm 1 PLACE ± 0.40 mm	SCALE: 2:1 DESIGN UNITS: mm <input checked="" type="checkbox"/> INCH <input type="checkbox"/> THIRD ANGLE PROJECTION <input type="checkbox"/>	DIMENSIONS: mm <input type="checkbox"/> INCH <input type="checkbox"/> mm ONLY <input checked="" type="checkbox"/>	SHT: 1 REV: 1	
	DRAWN BY & DATE: ATP 01/10/17 CHECKED BY & DATE: LAURX 01/10/17 APPROVED BY & DATE: BIXLER 01/10/17	TITLE: 8 ROW HSD DAUGHTERCARD ASSEMBLY SALES DRAWING	MOLEX INCORPORATED			
	ANGULAR: $\pm 2^\circ$	CAD FILENAME: SD-74680-062 MATERIAL NO.: 74680-0062 DRAWING NO.: SD-74680-062	SHEET NO.: 1 OF 1	SIZE D		
	DRAFT WHERE APPLICABLE MUST REMAIN WITHIN DIMENSIONS THIS DRAWING CONTAINS INFORMATION THAT IS PROPRIETARY TO MOLEX INCORPORATED AND SHOULD NOT BE USED WITHOUT WRITTEN PERMISSION.					