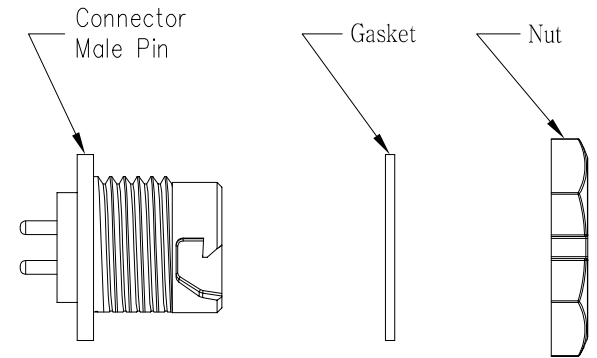
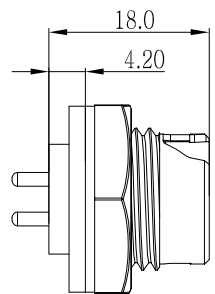
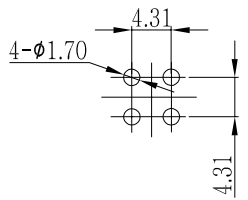
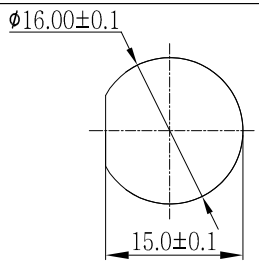


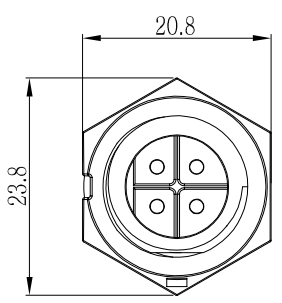
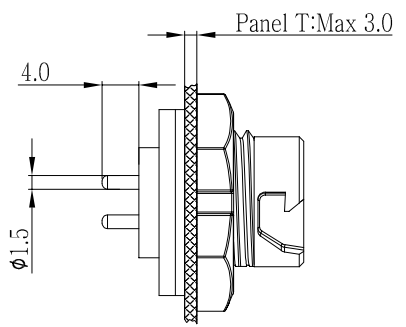
| REV. | ECN NO. | DESCRIPTION | SIGN | DATE |
|------|---------|-----------------|-------|------------|
| C1 | N/A | INITIAL DRAWING | Yumer | 2020/04/27 |



4 Pin
PCB Layout

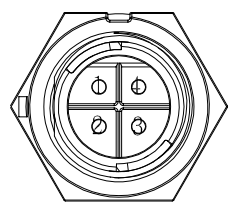


Recommended Panel Cut-Out



22XXX535-02

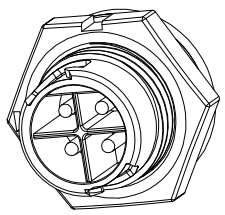
Pin Number



4 Pin

P/N: 22004535-02

Pin Assignments
Front View



- Specification:
- 1.Operation Temperature:-45°C~105°C.
 - 2.Insulation Resistance:100MΩ at DC500V.
 - 3.Contact Resistance:<10mΩ.
 - 4.Withstand Voltage: 1500V AC
 - 5.Operating Current:10A
 - 6.Operating Voltage:AC 125V
 - 7.Waterproof Rate:IP67 (Mated)
 - 8.Connector:Nylon, Black
 - 9.Male Pin:Copper Alloy, Gold Plated
 - 10.Gasket:Silicon Gray
 - 11.Panel Nut:Nylon, Orange
 - 12.Torque Rate:0.8~1.0N • m
 - 13.RoHS Compliant.
 - 14.Mating Cap P/N:806-00053-00

| | |
|-----------|-------|
| UNIT:mm | |
| TOLERANCE | |
| .X | ±0.25 |
| .XX | ±0.15 |
| .XXX | ±0.05 |
| ANGLES | ±1° |

| | |
|--|--------------|
| DESCRIPTION Standard Series Push Lock Front Mount With Male Pin(PCB) | |
| SCALE: 1:1 | SHEET 1 OF 1 |
| REV. C1 | SIZE A4 |
| * :Inspection Item | |

CHOGORI[®]

| | | | | | |
|----------|-------------|-------------|--------|------|------------|
| PART NO | 22XXX535-02 | DRAWN BY | Yumer | DATE | 2020/04/27 |
| DWG NO | | CHECKED BY | Ivan | DATE | 2020/04/27 |
| CUSTOMER | | APPROVED BY | Panson | DATE | 2020/04/27 |

THIS INFORMATION IS CONFIDENTIAL AND IS DISCLOSED TO YOU ON CONDITION THAT NO FURTHER DISCLOSURE IS MADE BY YOU TO OTHER THAN CHOGORI PERSONNEL WITHOUT AUTHORIZATION FROM CHOGORI CORP.